



HELLENIC REPUBLIC



GENERAL SECRETARIAT FOR NATURAL ENVIRONMENT AND WATER
GENERAL DIRECTORATE FOR WATER



1st REVISION
OF FLOOD RISK MANAGEMENT PLANS
of the River Basins
of Northern Peloponnese Water District (EL02)

Stage 2 - Deliverable 19

Translation into English of the summary reports of the methodologies and results of the Deliverables studies



**Co-funded by
the European Union**



HELLENIC REPUBLIC

MINISTRY OF ENVIRONMENT AND ENERGY

GENERAL SECRETARIAT FOR NATURAL ENVIRONMENT AND WATER

GENERAL DIRECTORATE FOR WATER

PROJECT NAME: 1st REVIEW OF FLOOD RISK MANAGEMENT PLANS OF THE RIVER BASINS OF WESTERN, NORTHERN AND EASTERN PELOPONNESE AND CRETE WATER DISTRICTS

JOINT VENTURE FOR THE 1ST REVISION OF FLOOD RISK MANAGEMENT PLANS OF PELOPONNESE AND CRETE

ADT OMEGA CONSULTING ENGINEERS TECHNICAL COMPANY

with the distinctive title: ADT OMEGA S.A.

ADVANCED ENVIRONMENTAL STUDIES CONSULTING ENGINEERS S.A.

with the distinctive title: ADENS S.A.

Revisions:

Issue	Date	Observations
Edition 1	27/08/2024	Original Version
Edition 2	19/12/2024	Incorporation of comments/feedback from the General Directorate for Water and the Technical Consultant (Protocol No. MoEE/ DfWSPaM/113875/18-10-2024)
Edition 3	22/05/2025	Incorporation of comments/feedback from the General Directorate for Water and the Technical Consultant (Protocol No. MoEE/DfWSPaM/7939/49/23-01-2025)

TABLE OF CONTENTS

1	<u>THE FLOODS DIRECTIVE 2007/60/ EC IN GREECE</u>	1
2	<u>THE NORTHERN PELOPONNESE WATER DISTRICT EL02</u>	3
3	<u>1ST REVISION OF THE PRELIMINARY FLOOD RISK ASSESSMENT</u>	5
4	<u>HYDROLOGY OF THE NORTHERN PELOPONNESE WATER DISTRICT (EL02)</u>	7
5	<u>HYDRAULIC SIMULATION OF THE NORTHERN PELOPONNESE WATER DISTRICT (EL02)</u>	12
6	<u>FLOOD HAZARD MAPS – FHMS</u>	14
7	<u>FLOOD RISK MAPS – FRMS</u>	21
8	<u>CONSIDERATION OF CLIMATE CHANGE IN THE 1ST REVISION OF THE FRMPS</u>	28
9	<u>DIFFERENCES COMPARED TO THE 1ST FRMPS WD EL02</u>	30
10	<u>PROGRAM OF MEASURES OF THE 1ST REVISION OF FRMPS FOR THE NORTHERN PELOPONNESE WD EL02</u>	34
10.1	OBJECTIVES OF THE 1ST REVISION OF FRMPS FOR THE NORTHERN PELOPONNESE WD EL02	34
10.2	PRELIMINARY ASSESSMENT OF A SET OF MEASURES	40
10.3	FRMP'S PROGRAM OF MEASURES FOR THE NORTHERN PELOPONNESE WD EL02	40
10.4	SPECIALIZATION OF MEASURES FOR THE NORTHERN PELOPONNESE WD EL02	49
11	<u>PRIORITIZATION OF MEASURES OF THE 1ST REVISION OF THE FRMPS WD EL02</u>	67
12	<u>PUBLIC INFORMATION AND CONSULTATION</u>	76

LIST OF TABLES

Table 1-1: River Basins and the Responsible Decentralized Administrations in the Northern Peloponnese Water District (EL02)	2
Table 3-1: Revised APSFRs in the Northern Peloponnese Water District EL02.....	5
Table 4-1: Overview of the hydrological simulation results per basin for average humidity conditions.....	8
Table 7-1: Amount of infrastructure and economic activities located within the flooded area of a T=1000-year event for each APSFR in the Northern Peloponnese WD.....	25
Table 10-1: Linking measures to the spatial level of implementation	41
Table 11-1: Number of measures per action pillar and total cost on the Northern Peloponnese Water District	67
Table 11-2: Prioritization of measures of the 1 st revision of the FRMPs for the WD EL02 based on the overall benefit index (D11) ...	69
Table 11-3: Prioritization of measures of the 1 st revision of the FRMPs for the WD EL02 based on the total annualized investment cost (D16)	72

LIST OF FIGURES

Figure 2-1: Northern Peloponnese Water District (EL02) and its River Basins	4
Figure 3-1: Revised APSFRs of the Northern Peloponnese Water District (EL02)	6
Figure 5-1: Snapshot of the HEC - RAS 6.4.1 graphical environment showing the DTM, the 2D grid and structures perpendicular to the stream flow	13
Figure 5-2: Snapshot of the HEC - RAS 6.4.1 graphical environment showing the geometric characteristics of the bridge when inputting it in the 2D model	13
Figure 6-1: Distribution of FHM and FRMs for river/lake flooding.....	16
Figure 6-2: Indicative section of a FHM from river/lake flooding in the wider area of Eastern Achaia along the Kyllinian Gulf, EL02APSFR008, with color grading of maximum depth for T=100 years return period.....	17
Figure 6-3: Indicative section of a FHM from river/lake flooding in the wider area of Eastern Achaia along the Kyllinian Gulf, EL02APSFR008, with color grading of maximum depth for T=100 years return period.....	18
Figure 6-4: Distribution of FHM and FRMs from sea flooding.....	19
Figure 6-5: Indicative section of a FHM from sea flooding in the wider area of Eastern Achaia along the Kyllinian Gulf, EL02APSFR008, with color grading of maximum depth for T=100 years return period	20
Figure 7-1: Percentage of flood risk classes from river/lake flooding in the WD EL02 for T=50, T=100, and T=1000	23
Figure 7-2: Percentage of flood risk classes from sea level rise flooding in the WD EL02 for T=50, T=100, and T=1000	24
Figure 7-3: Indicative section of a FRM in the wider area of Eastern Achaia along the Kyllinian Gulf, EL02APSFR008, illustrating the affected land uses for a flood event with T=100 years return period.....	27
Figure 10-1: Correlation diagram of General Objective S1 - Specific Objectives with Action and Measure Types of the action pillar M2 Prevention of the 1 st revision of FRMPs.....	36
Figure 10-2: Correlation diagram of General Objective S2 - Specific Objectives with Action and Measure Types of the action pillar M3 Protection of the 1 st revision of FRMPs	37
Figure 10-3: Correlation diagram of General Objective S1 - Specific Objectives with Action and Measure Types of the action pillar M2 Preparedness of the 1 st revision of FRMPs.....	38
Figure 10-4: Correlation diagram of General Objective S2 - Specific Objectives with Action and Measure Types of the action pillar M5 Rehabilitation of the 1 st revision of FRMPs.....	39

1 The Floods Directive 2007/60/ EC in Greece

- Floods Directive 2007/60/EC, of European Parliament and the Council of the 23rd of October 2007 for the flood **risk assessment** and **management**.
- Incorporation into Greek Legislation: Joint Ministerial Decision H.P. 31822/1542/E103/2010 (Government Gazette B' 1108/21.07.2010).
- Amended by JMD 177772/924/2017 (Government Gazette Issue B' 2140/22.06.2017).
- Amended by Law 5037/2023 (Government Gazette Issue A' 78/29.03.2023).

The Floods Directive 2007/60/EC is implemented in Greece in three stages

Stage 1: Preparation of the **Preliminary Flood Risk Assessment (PFRA)** for each river basin and the identification of Areas of Potential Significant Flood Risk – APSFRs.

Stage 2: Preparation of **Flood Hazard Maps** and **Flood Risk Maps** in Areas of Potential Significant Flood Risk – APSFRs

Stage 3: Preparation of **Flood Risk Management Plans**, including **Program of Measures**, for the Areas of Potential Significant Flood Risk – APSFRs.

These are reviewed every 6 years

1st implementation cycle of Directive 2007/60/EC

1. Preparation and submission to the EU of the PFRA for the 14 River Basin Districts of Greece and identification of APSFRs (2012).
2. Preparation and submission to the EU of the 1st Flood Hazard Maps and Flood Risk Maps (2017).
3. Preparation and submission to the EU of the initial FRMPs: The initial FRMP for the Northern Peloponnese River Basin District (EL02) was approved by Decision No. ΥΠΕΝ/ΓρΕΓΥ/41356/323 (Government Gazette Issue B' 2691/06.07.2018).

2nd implementation cycle of Directive 2007/60/EC

1. Preparation and submission to the EU of the 1st Revision of the Preliminary Flood Risk Assessment (1st PFRA) for the 14 Water Districts of Greece and review of the Areas of Potential Significant Flood Risk – APSFRs (2020).
2. Following the open international tender, the General Directorate of Water of the Ministry of Environment and Energy assigned the:
 - a. Preparation of Flood Hazard Maps (FHP) and Flood Risk Maps (FRM) in the Areas of Potential Significant Flood Risk – APSFRs (2023),
 - b. Preparation of the 1st review of the Flood Risk Management Plan (FRMP) which is under consultation
 - c. Preparation of the Strategic Environmental Assessment (SEA) for the 1st Revision of the FRMP.

DELIVERABLE 19

Translation into English of the summary reports of the methodologies and
results of the Deliverables studies

Competent Authorities

The **Hellenic Ministry of Environment and Energy / General Directorate for Water** sets the policy for water protection and management and monitors its implementation. The Water Directorates perform the responsibilities of the Decentralized Administration concerning water protection and management, including flood risk. For the Northern Peloponnese Water District (EL02), competent authorities vary by River Basin and are shown in the table below.

Table 1-1: River Basins and the Responsible Decentralized Administrations in the Northern Peloponnese Water District (EL02)

Water District	River Basin	Regions that fall geographically within the limits of the RB	Competent Decentralized Administration/ Water Directorate 1 (according to Government Gazette 1383/B/2-9-10, Government Gazette 1572/B/28-9-10 and Government Gazette 87/A/7-6-2010)
Northern Peloponnese	Coastal Streams of Northern Peloponnese (RB 27)	Peloponnese (58,1%) Western Greece (41,9%)	Decentralized Administration of Peloponnese, Western Greece and the Ionian Sea/ Peloponnese Water Directorate
Northern Peloponnese	Peiros – Verga – Pineios (RB 28)	Western Greece (100%)	Decentralized Administration of Peloponnese, Western Greece and the Ionian Sea/ Peloponnese Water Directorate
Northern Peloponnese	Kefalonia – Ithaca – Zakynthos (RB 45)	Ionian Islands (100%)	Decentralized Administration of Peloponnese, Western Greece and the Ionian Sea/ Peloponnese Water Directorate

¹The Official Gazette refers to the former "state" Regions, whose responsibilities are exercised, according to Article 280 of Law 3258/2010 (Official Gazette 87/A/7-6-10), by the Decentralized Administrations, with the exception of the responsibilities that fall under Article 186 of the same law to the Elected Regions.

2 The Northern Peloponnese Water District EL02

The Northern Peloponnese Water District (EL02) is geographically located in northern Peloponnese and includes the islands of Kefalonia, Ithaca, and Zakynthos within its boundaries. The total area of the district is 7,397 km². The territory of EL02 spans across the Regions of Peloponnese, Western Greece, and the Ionian Islands, with area percentages of 28%, 54%, and 18% respectively.

The Northern Peloponnese Water District is delineated on land by a watershed line starting from Cape Katakolo, running through the mountainous areas of Foloi, Lampeia, Erymanthos, Aroania, the Kalavryta plateau, the southern edge of the closed Feneos Basin, the mountains of Oligyrtos, Lyrkeio, and Oneia, ending at Cape Trachili through the peaks of Trapezona and Politis in Corinthia.

The Northern Peloponnese Water District consists of the following River Basins:

- Northern Peloponnese Stream Basin (EL0227) with an area: 3,685 km
- Peiros – Verga – Pineios Basin (EL0228) with an area: 2,423 km²
- Kefalonia – Ithaca – Zakynthos Basin (EL0245) with an area: 1,289 km²

Regarding the morphology of the Water District, the average altitude is 507.7m and the average slope is 29.70%. 36.7% of the water district area is characterized as mountainous (altitude above 600m), 29.6% semi-mountainous (altitude between 200m and 600m) while 33.7% as lowland (altitude less than 200m). The largest plains are found in the Glafkos River Basin and inland in the closed basins of Feneos and Stymphalia. A distinct geomorphological feature of the Northern Peloponnese coast is the tectonic terrace formations, which step down toward the sea, forming gentle plains at different altitudes.

In Northern Peloponnese the dominant land use is agriculture, accounting for approximately 55%. According to the 2011 census, the total actual population in the Northern Peloponnese Stream Basin (EL0227) is 374.590 inhabitants, while the general trend of population change is estimated to be a decrease of approximately 2.51% during the decade 2001 - 2011. For the Peiros-Verga-Pineios Basin (EL0228) the total actual population is 144,940 inhabitants and the general trend of population change is estimated to be a decrease of approximately 11,75% during the decade 2001 – 2011. Lastly, for the Kefalonia-Ithaca-Zakynthos Basin (EL0245) the total actual population is 84,676 inhabitants while the general trend of population change is estimated to be an increase of approximately 7.86% during the decade 2001 – 2011.

In the entire Northern Peloponnese Water District (EL02), the total annual water needs for all activities and uses is estimated ~480Mm³. Agriculture (irrigation), which is the main water user, consumes ~84.6% (406.4Mm³) of the total water needs, industry ~1,8% (8,7Mm³), water supply ~12.9% (61.8Mm³) and livestock ~0.7% (3,2 Mm³). As for the total estimated water withdrawals in the Northern Peloponnese Water District (EL02), they amount to approximately ~616hm³ considering 30% network losses due to irrigation of private land. If the losses due to irrigation of private land are ignored, the total estimated water withdrawals are estimated to be approximately ~519hm³.



Figure 2-1: Northern Peloponnese Water District (EL02) and its River Basins

3 1st revision of the Preliminary Flood Risk Assessment

During the 1st revision of the PFRA, the following have been reviewed and updated: the Preliminary Flood Risk Assessment for all the Water Districts of the country, the list of Historical Floods and Significant Historical Floods as well as the Areas of Potential Significant Flood Risk (APSFRs).

Between the 1st PFRA and the 1st revision of the PFRA, during the period 2012–2018, **309 historical flood events were recorded** in the WD EL02, of which **258** are characterized as **significant historical flood events** since they had particularly large consequences in terms of either human casualties, financial compensation, or size of the flooded area. The areas where most floods have occurred are the lowland area of the Selinountas River and other streams in Western Achaia, as well as in the low-lying catchments from Skafidia to Psathopyrgos in Eastern Achaia.

For the Northern Peloponnese Water District, 9 Areas of Potential Significant Flood Risk (APSFRs) in total are identified according to the methodology applied. These 9 Areas of Potential Significant Flood Risk (APSFRs) resulted from the consolidation and expansion of the APSFR that were identified in the 2012 PFRA.

Table 3-1: Revised APSFRs in the Northern Peloponnese Water District EL02

no	Name	Code	RB	Percentage of RB	Area (km ²)
1	Lowland area of Loutra Oraias Elenis settlements	EL02APSFR001	EL0227	0,1%	3,28
2	Upper Asopos River zone	EL02APSFR002	EL0227	1,0%	38,49
3	Lowlands of Zakynthos	EL02APSFR003	EL0245	5,9%	76,00
4	Lowlands of Stymphalia lake basin and Alea Basin	EL02APSFR004	EL0227	1,5%	52,45
5	Lowland zone of artificial Feneos lake basin	EL02APSFR005	EL0227	1,1%	38,96
6	Lowlands of Northern Peloponnese streams from Corinth to Melissi	EL02APSFR006	EL0227	4,1%	150,76
7	Lowlands of Selinountas River and other Western Achaia streams	EL02APSFR007	EL0227	2,3%	85,21
8	Lowlands of Eastern Achaia catchments from Skafidia to Psathopyrgos	EL02APSFR008	EL0228	37,5%	906,79
9	Lowlands of Kefalonia Island	EL02APSFR009	EL0245	1,5%	20,96
TOTAL					1372,90
Difference with PFRA 2012					+5%
Ποσοστό στο σύνολο του ΥΔ***					17,40%

***The total area of the WD EL02 is 7.397 km

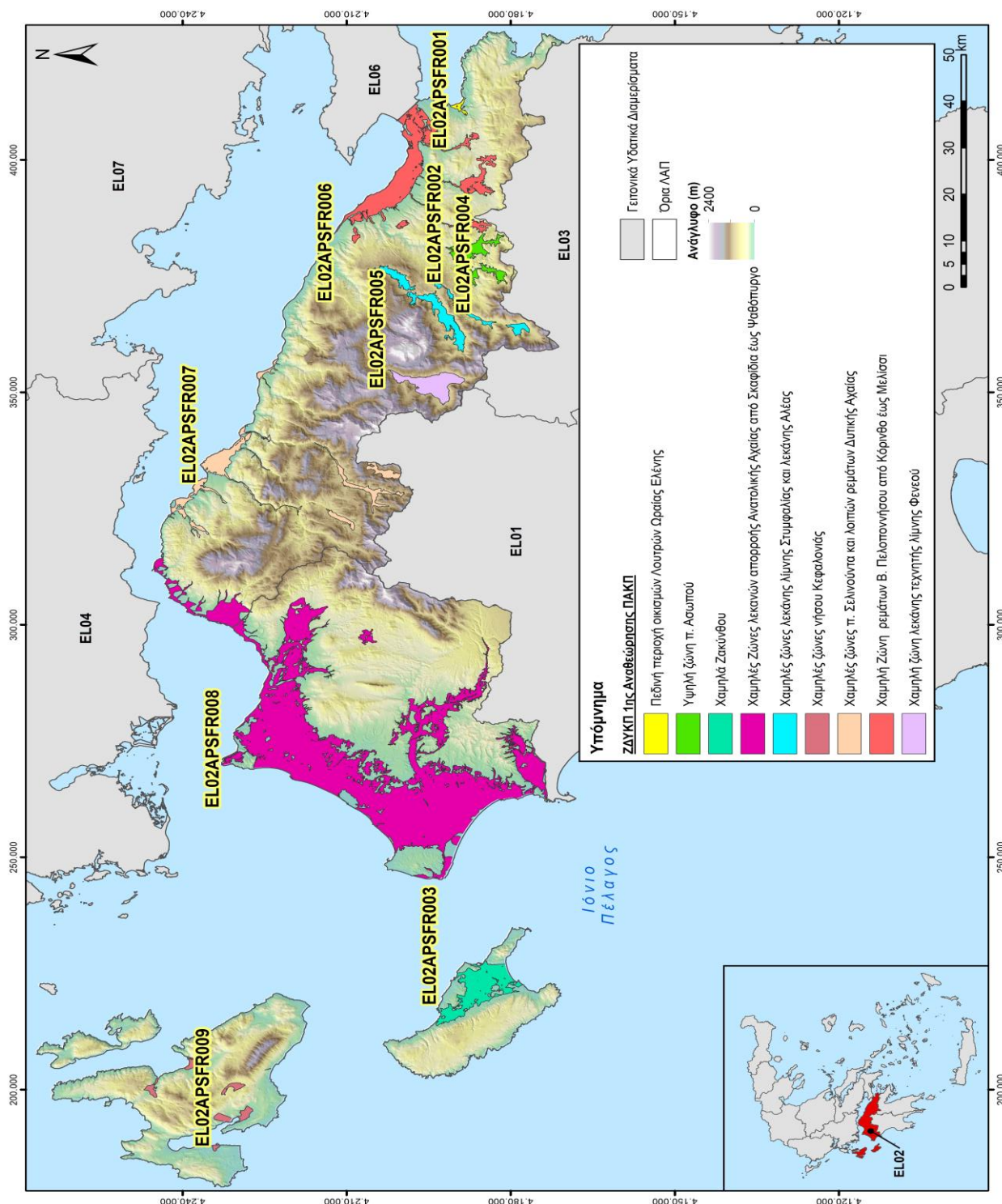


Figure 3-1: Revised APSFRs of the Northern Peloponnese Water District (EL02)

4 Hydrology of the Northern Peloponnese Water District (EL02)

According to the Floods Directive 2007/60/EC and the relevant Joint Ministerial Decision No. 31822/1542/E103/21.7.2010 which incorporates the Directive into the National Law, it is foreseen that for each watercourse the hydrographs (average, favorable and unfavorable conditions) are carried out for the following scenarios:

- Floods with **return period of T = 50 years** high probability of exceedance
- Floods with **return period of T = 100 years** medium probability of exceedance
- Floods with **return period of T = 1000 years** low probability of exceedance

During the 1st revision of the FRMP, the rainfall curves are revised. This work is carried out for the entire country. The rainfall curves are a parametric relationship that connects the intensity of rainfall with the return period for each rainfall duration. As for the design rainfall (ΔH) and the peak flow (ΔQ) in the WD EL02, the following are observed:

Design Rainfall (ΔH)

- For T=50 years return period, the variations in design rainfall are small. Mostly small negative variations appear, meaning decrease of rainfall in the central and eastern parts of EL02 and small positive changes meaning increase of rainfall in the western part.
- For T=100 years return period, the variations in design rainfall are small to moderate. Small positive variations appear, meaning increase of rainfall in the central and western parts of EL02 while in the eastern parts of the WD small negative changes appear, meaning decrease of rainfall.
- For T=1000 years return period the changes of the design rainfall are moderate while in some cases are larger. In particular, moderate to large positive variations appear, meaning increase of rainfall in the upstream Basins of the Pinios and Peiros rivers. On the other hand, small to moderate negative variations persist in the Eastern part of EL02.

Peak Flow (ΔQ)

- For T=50 and 100 years return period, the variations in discharges are small to moderate either positive (increased discharge compared to the 1st cycle of the FRMPs) or negative (reduced discharge compared to the 1st cycle of the FRMPs) in the largest part of the Northern Peloponnese Water District (EL02). Increased discharges mainly appear in the sub-basins of Pinios and Peiros rivers as well as in the wider areas of Achaia and Northern Ilia. On the other hand, reduced discharges appear in the Central and Eastern areas of the WD.
- For a return period of T=1000 years, changes in discharges are generally moderate to large positive, increased discharges appear in the largest part of WD EL02. On the other hand, slightly reduced discharges appear in the Asopos and Zapantis Basins.

DELIVERABLE 19

Translation into English of the summary reports of the methodologies and
results of the Deliverables studies

For the hydrological simulation the new Digital Terrain Model is used, which is based on the latest 2m x 2m resolution DTM of the Hellenic Cadastre. Thus, the morphometric-geometric characteristics of the basins and sub-basins are extracted: area, maximum, average and outlet elevation as well as the length of the main river reach. Hyetograph are calculated for design storms with return periods $T = 50, 100$, and 1000 years and rainfall duration D , multiple of the basin concentration time, based on the revised rainfall curves and the morphometric-geometric characteristics. The point precipitation is converted to surface precipitation, through a surface runoff coefficient. The hyetograph are calculated as follows:

- with the **alternating block method** for moderate and high probability of flood occurrence, i.e. with return periods of 100 and 50 years, respectively
- with the method of the least favorable order of design hyetogram for low probability floods, i.e. with return periods of 1000 years (**worst profile**)

The effective precipitation is estimated separately in each sub-basin, using the curve number (CN). The estimation is made for three types of soil moisture conditions. In addition to that, the burnt areas are taken into consideration to increase the curve number in each sub-basin. To convert the hyetograph (rainfall) into runoff (discharge), the flood hydrographs of each rain event are estimated taking into account the concentration time, the duration of rainfall and the Unit Hydrograph of each basin / sub-basin. For the **hydrological routing** of the flood wave within a stream reach, the **Muskingum method and the lag time method** are used. The flood hydrographs are generated using the free of charge software HEC - HMS 4.10 (Hydrologic Engineering Center – Hydrologic Modeling System). With HEC - HMS it is possible to model all the hydrological processes (calculation of hydrological losses, transformation of active precipitation into direct runoff, hydrological routing, etc.) that happen during the transformation of precipitation into runoff in dendritic- type basins.

The following table contains the results of the hydrological simulation for the three return periods considered and for average humidity conditions:

Table 4-1: Overview of the hydrological simulation results per basin for average humidity conditions

no	Basin Code	Description	Surface area (km ²)	Q (m ³ /s) T=50	Q (m ³ /s) T=100	Q (m ³ /s) T=1000	Duration (hrs)
1	EL0228FR0001	Iardanos R.	97,49	438,10	569,90	1024,30	24
2	EL0228FR00F1	Lagadia R.	4,54	28,20	38,70	106,30	12
3	EL0228FR00F2	Douneika#	4,04	29,00	38,80	97,40	12
4	EL0228FR00F3	Aboulas R.	9,17	56,10	75,30	191,50	12
5	EL0228FR00F5	Boudroumi R.	17,40	81,50	108,00	260,00	12
6	EL0228FR00F7	Gourlesas R.	89,21	378,30	493,40	1016,90	24
7	EL0228FR00F8	Palaioxorio#	8,94	32,40	42,40	97,80	24
8	EL0228FR0002	Pineios P.	890,71	864,70	1131,60	2636,30	48
9	EL0228FR00F11	Renias R.	19,02	88,00	116,20	275,20	12
10	EL0228FR00F12	Ansatos R.	45,69	141,90	183,50	407,10	48
11	EL0228FR00F15	Gouvos R.	90,37	305,30	395,80	750,30	24
12	EL0228FR00F16	Kapeleteiko R.	32,63	125,30	162,90	367,40	24
13	EL0228FR00F54	Klimatsidi R.	15,75	64,70	84,50	193,30	24

DELIVERABLE 19 Translation into English of the summary reports of the methodologies and results of the Deliverables studies

no	Basin Code	Description	Surface area (km ²)	Q (m ³ /s) T=50	Q (m ³ /s) T=100	Q (m ³ /s) T=1000	Duration (hrs)
14	EL0228FR00F6	Ag. Athanasios#	4,40	25,10	33,00	78,20	12
15	EL0228FR00F14	Lechaina#	10,94	31,80	41,20	91,40	48
16	EL0228FR0007	Vergas R.	104,13	438,50	570,40	1267,40	24
17	EL0228FR00F17	Royskoulas R.	74,86	166,20	216,70	595,30	48
18	EL0228FR0009	Manna R. (Larisos P.)	146,75	495,20	649,40	1290,10	24
19	EL0228FR00F18	Kalogria#	37,63	74,90	102,30	276,10	24
20	EL0228FR00F19	Rethi R.	11,54	35,00	48,60	138,40	12
21	EL0228FR00F20	Vourlaki R.	7,00	20,10	28,60	87,60	12
22	EL0228FR0004	Peiros P.	486,15	1131,80	1544,50	4117,60	24
23	EL0228FR00F21	Vraxneika#	4,96	33,90	44,90	108,60	12
24	EL0228FR00F22	Stavrolagado R.	7,35	43,80	58,20	142,90	12
25	EL0228FR00F23	Kourichali R.	16,83	84,00	110,70	262,40	12
26	EL0228FR00F4	Latifi R.	27,82	134,70	177,90	427,80	12
27	EL0228FR00F24	Neromanna R.	16,02	33,80	52,90	230,30	12
28	EL0227FR00F37	Elisson R.	27,90	114,10	158,60	454,10	12
29	EL0228FR00F13	Melissos R.	28,18	67,20	87,00	193,20	48
30	EL0227FR0001	Glaukos P.	100,09	155,20	239,60	1015,20	12
31	EL0227FR00F25	Diakoniaris R.	15,78	57,80	79,70	222,50	12
32	EL0227FR00F26	Vountenis X.	12,13	59,40	80,20	213,00	12
33	EL0227FR00F28	Selemnios R.	14,83	72,70	98,50	265,40	12
34	EL0227FR00F29	Xulokera R.	9,86	43,90	61,60	187,90	12
35	EL0227FR00F30	Xirorema	2,63	24,50	32,20	75,10	12
36	EL0227FR0009	Selinous P.	354,71	558,10	817,00	3097,60	24
37	EL0227FR00F31	Katourla R	17,06	46,70	66,70	211,70	12
38	EL0227FR00F32	Kerunitis R.	82,94	96,50	156,10	741,50	12
39	EL0227FR0013	Vouraikos P.	240,29	221,70	343,60	1474,40	12
40	EL0227FR00F35	Seliandros R.	21,54	94,00	130,60	372,10	12
41	EL0227FR0027	Kurillou R.	12,82	66,50	91,10	247,30	12
42	EL0227FR0029	Asopos P.	620,69	656,10	945,40	3022,00	24
43	EL0227FR00F38	Filiza R.	7,13	39,10	53,20	141,00	12
44	EL0227FR00F39	Kokkonion#	8,68	49,60	67,00	175,20	12
45	EL0227FR00F40	Periterona R.	23,07	99,00	134,70	359,20	12
46	EL0227FR00F43	Xarazani R.	15,72	63,20	86,50	236,50	12
47	EL0227FR0033	Raizani R.	136,49	353,10	484,00	1329,90	24
48	EL0227FR00F44	Litsa R.	11,53	46,10	63,70	178,90	12
49	EL0227FR00F45	Loukiotika#	6,25	31,90	43,70	121,30	12
50	EL0227FR0037	Potamia R.	164,27	419,00	584,80	1722,00	24
51	EL0227FR00F46	Isthmia#	12,25	48,40	66,60	184,30	12
52	EL0227FR00F48	Xerias R.	19,09	13,60	25,60	183,30	12

DELIVERABLE 19 Translation into English of the summary reports of the methodologies and results of the Deliverables studies

no	Basin Code	Description	Surface area (km ²)	Q (m ³ /s) T=50	Q (m ³ /s) T=100	Q (m ³ /s) T=1000	Duration (hrs)
53	EL0227FR00F49	Vlasseika#	8,86	19,60	31,90	150,60	12
54	EL0227FR0003	Charadros R. (Veltitsanos R.)	19,32	41,40	64,70	280,80	12
55	EL0245FR00F53	Laganas#	28,41	100,60	138,10	382,10	12
56	EL0245FR00F52	Zakynthos (R. Ag. Charalampi)	69,48	205,20	279,40	746,40	24
57	EL0245FR00F51	Tsilivi#	7,10	28,90	38,90	99,50	12
58	EL0245FR00F50	Alykes#	37,42	98,50	141,80	470,80	12
59	EL0228FR00F10	Loutra Kyllinis#	7,29	48,30	64,00	154,80	12
60	EL0228FR00F9	Bali R.	6,81	51,20	66,40	148,40	12
61	EL0227FR00F34	Olivos P.	215,85	453,30	638,00	1650,60	24
62	EL0227FR00F33	Evrimanthios R.	16,63	42,20	64,70	261,30	12
63	EL0227FR00F74	Ancient Port D.#	2,62	10,60	14,80	43,30	12
64	EL0227FR00F73	Ancient Corinth#	8,54	40,20	54,90	147,50	12
65	EL0227FR00F67	Melission#	3,18	22,00	29,50	74,70	12
66	EL0227FR00F68	Construction Coordination PPC Employees. #	2,59	22,20	29,30	71,00	12
67	EL0227FR00F69	Diminion#	3,35	28,00	37,20	89,90	12
68	EL0227FR00F70	Kato Diminion#	4,51	27,10	37,20	100,30	12
69	EL0227FR00F75	Poseidonia#	3,36	17,00	22,80	56,70	12
70	EL0227FR00F71	Kiaton#	3,52	16,20	22,10	59,60	12
71	EL0227FR00F72	Bolation#	6,77	25,00	34,60	96,80	12
72	EL0227FR00F66	Krathion#	6,49	18,70	28,30	110,40	12
73	EL0227FR0019_2	Tholopotamo R.	13,40	71,00	95,70	249,70	12
74	EL0227FR00F57	Labirion#	2,91	22,90	29,40	64,50	12
75	EL0227FR00F58	Vromolaggado R.	3,04	23,20	30,40	71,40	12
76	EL0227FR00F61	Aigion A.#	4,44	12,10	17,40	56,10	12
77	EL0227FR00F63	Digeliotika#	2,90	7,30	10,20	30,10	12
78	EL0227FR00F62	Alikí Aigiou#	4,63	13,00	18,00	50,20	12
79	EL0227FR00F60	Lagkadi R.	9,01	33,60	46,60	133,30	12
80	EL0227FR00F64	Terpsithea#	6,04	24,60	34,90	110,50	12
81	EL0227FR0005	Foinikas P.	87,73	182,60	270,50	938,10	12
82	EL0227FR00F56	Kuani Akti#	4,13	29,30	39,50	106,10	12
83	EL0227FR00F55	Volinaios R.	28,32	102,50	141,90	405,10	12
84	EL0245FR00F78	Sami A.#	1,32	0,40	0,90	17,80	12
85	EL0245FR0001	Agiás Eufimias R.	59,54	46,60	85,00	622,10	12
86	EL0245FR00F84	Lixourion#	5,77	36,20	46,80	104,20	12
87	EL0245FR00F83	Drapanon B.#	20,76	32,50	55,10	300,10	12
88	EL0245FR00F82	Drapanon N.#	9,95	24,80	38,50	164,50	12

DELIVERABLE 19

Translation into English of the summary reports of the methodologies and
results of the Deliverables studies

no	Basin Code	Description	Surface area (km ²)	Q (m ³ /s) T=50	Q (m ³ /s) T=100	Q (m ³ /s) T=1000	Duration (hrs)
89	EL0245FR00F80	Kl. Lekani Valsamaton	27,51	32,10	52,80	270,80	12
90	EL0245FR00F81	Koutavos#	33,51	100,40	140,00	491,80	12
91	EL0245FR00F79	Lourdata#	3,86	1,60	3,80	60,50	12
92	EL0245FR00F76	Petali R.	105,63	47,60	89,40	734,10	12
93	EL0245FR00F77	Sami D.#	1,93	6,20	10,00	44,80	12
94	EL0227FR00191	Krios P.	114,43	236,00	346,40	1230,80	12
95	EL0227FR0017	Krathis P.	143,15	173,70	268,20	1104,90	12
96	EL0227FR00F65	Manna R.	27,78	42,30	63,70	242,30	12
97	EL0227FR0007	Meganeitas R.	61,65	128,10	191,30	713,00	12
98	EL0227FR00F59	Tholopotamo	17,43	74,90	100,70	259,30	12
99	EL0227FR00F47	Fournia R.	68,42	80,10	129,50	619,20	12
100	EL0227FR00F41	Zapantis R.	73,71	242,10	328,70	858,90	12
101	EL0227FR00F42	Dristiliza R.	6,45	30,20	41,60	114,60	12

5 Hydraulic Simulation of the Northern Peloponnese Water District (EL02)

During the **1st implementation cycle** of the Directive 2007/60/EC, 101 river basins and 1159 watercourses were identified. In the present **2nd implementation cycle**, 11 of the 101 river basins are revised **while 36 new river basins** and **249 watercourses** are added. Hydraulic simulation is carried out for the following watercourses:

- Rivers, streams and torrents that are added in the APSFRs according to the 1st review of the PFRA,
- Rivers, streams and torrents within the APSFRs, since the 1st implementation cycle of the 2007/60/EC Directive, and had not been included in the hydraulic simulation
- Rivers, streams and torrents within the APSFRs since the 1st implementation cycle but with newly added reaches in the present cycle
- Rivers, streams and torrents within the APSFRs since the 1st implementation cycle that underwent significant changes (e.g. implementation of flood protection structures).

For the hydraulic simulation, **2D model analysis is performed** with non-steady conditions, using the hydrographs derived from the hydrological analysis. The **input data** for the hydraulic simulation consist of the following:

- The Digital Terrain Model, based on the latest 2m x 2m resolution DTM of the Hellenic Cadastral, processed adequately,
- Topographic data and site inspections of existing structures,
- Hydrographs – Boundary conditions and hydrographs for cross-border basins–lakes, as derived from the hydrological analysis,
- roughness of the Manning coefficient based on the latest land use data,
- Initial conditions and assumptions for the sake of the hydraulic simulation.

For the **hydraulic simulation**, the free-of-charge HEC - RAS software version 6.4.1 created by the U.S. Army Corps of Engineers (U.S. Army Corps of Engineers), is used. The software can be used both for steady and unsteady flow conditions and calculates the water characteristics such as depth, level and flow velocity any time during the simulation as well as their maximum and minimum values. Finally, it can simulate a wide range of structures, including bridges, culverts and spillways/elevators.

In the following figure, a snapshot of the HEC - RAS 6.4.1 graphical environment while adding a bridge into a 2D model is presented.



Figure 5-1: Snapshot of the HEC - RAS 6.4.1 graphical environment showing the DTM, the 2D grid and structures perpendicular to the stream flow

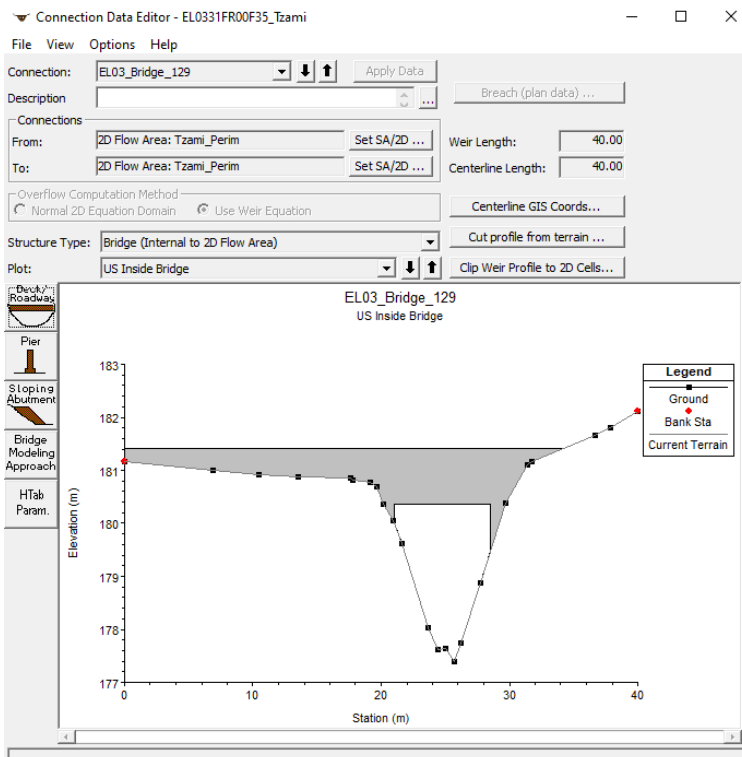


Figure 5-2: Snapshot of the HEC - RAS 6.4.1 graphical environment showing the geometric characteristics of the bridge when inputting it in the 2D model

6 Flood Hazard Maps – FHMs

The FHMs are presented at a scale of 1:25,000 for the three return period scenarios (T=50, 100 and 1000 years) for flooding due to river/lakes. Same scale, 1:25,000, is also used for the FHM due to sea flooding which is calculated for high exceedance probability (T=50-year return period) and medium exceedance probability (T=100-year return period).

For all the points of interest affected by river/lake flooding, the arrival and residence time of the flood wave are calculated for flow depths ≥ 0.3 m. The FHMs from river/lake flooding present the spatial distribution of both the maximum depth and the maximum water velocity for the three return period scenarios. The FHMs from the average sea level rise present the spatial distribution of the maximum flow depth. The above-mentioned are presented in the appropriate color scales. The FHMs from river/lake flooding additionally present:

- The points of interest
- The arrival and residence time of the flood wave at the points of interest in the form of table
- the boundaries of the APSFRs as determined at the 1st revision of the Preliminary Flood Risk Assessment (PFRA)
- The names of local city/towns
- Existing structures (bridges, culverts, dams, embankments, terraces). It is noted that structures also include the site inspections carried out to ensure the dimensions of the most important structures along the streams to be considered in the hydraulic simulation.
- Inundation surface due to sea level rise for T=50 and T=100 years return period
- Coastline
- The axis and the chainage (every 500 or 1000 meters from downstream to upstream) of the rivers that are simulated
- the boundaries of neighboring Water Districts
- Points showing
 - ✓ small settlements or places within cities
 - ✓ locations of important projects (bridges, embankments, culverts, dams, etc.)
 - ✓ important land uses (archaeological sites, industries, WWTP, WTP, etc.)

For the EL02 WD, mean sea level rise is estimated to be more than 1m and therefore, **FHMs for Sea Flooding (SF) are created.**

Comparing the FHMs from river/lake flooding of the 1st implementation cycle with the ones of the 2nd implementation cycle of the 2007/60/EC Directive, the following are observed:

In the present implementation cycle of the FRMPs, an increase in the total area is observed for all three (3) return periods scenarios, compared to the 1st implementation cycle of the FRMPs. More specifically, for T=50 years period the total area is increased approximately 90%, for T=100 years return period, the total area is increased approximately 70%, while for T=1000 years return period is increased

approximately 30%. As for the flood hazard results, although all five (5) classes of flood intensity are observed both in the present 1st revision and in the 1st implementation cycle of the FRMPs, the class of very low flood intensity is almost zero in the present 1st revision of the FRMPs. More specifically, in the 1st Revision of the FRMs for T=50 years return period, the area with very low flood intensity is reduced by 94%, the area with low flood intensity is increased approximately by 300%, the area with moderate flood intensity is increased by 250%, the area with high flood intensity is increased by 100% and the area with very high flood intensity is increased by 500%, compared to the 1st implementation cycle of the FRMs. For T=100 years return period, in the 1st revision of the FRMPs, the area with very low flood intensity is reduced by 95%, the area with low flood intensity is increased approximately by 220%, by 200% for moderate flood intensity, by 120% for high flood intensity and by 450% for very high flood intensity, compared to the 1st implementation cycle of the FRMPs. Finally, for T=1000 years return period in the 1st revision of the FRMPs, the area with very low flood intensity is reduced by 99%, the one with low flood intensity is reduced by 50%, by 140% for moderate flood intensity, by 75% for high flood intensity and by 600% for very high flood intensity, compared to the 1st implementation cycle of the FRMPs.

Accordingly, comparing the FHMs from sea flooding of the 1st implementation cycle with the ones of the 2nd implementation cycle of the 2007/60/EC Directive, the following are observed:

There is a decrease (22%) in the total area in the present 1st revision compared to the 1st implementation cycle of the FRMPs. Regarding the flood hazard results, it is observed that there is an expansion of the flood intensity classes from 3 to 4 hazard levels, in the present implementation cycle. However, as mentioned above, there is a large variation in the distribution of the flood intensity classes present 1st revision of the FRMPs. More specifically, in the 1st revision of the FRMPs, the area with very low flood intensity is reduced by 100%, with low flood intensity is increased by 98%, with moderate flood intensity is reduced by 65%. The area with very high flood intensity appeared in the 1st Revision of the FRMPs but not in the initial cycle.

The next figure shows the distribution of the Flood Hazard Maps (FHM) for river/lake flooding and for sea flooding, which is also the same for the Flood Risk Maps (FRMs) that are presented in Chapter 7. Following, a Flood Hazard Map (FHM) showing the spatial distribution of maximum depths and maximum velocities within APSFR EL02APSFR006 is presented indicatively both for river/lake flooding and sea flooding.

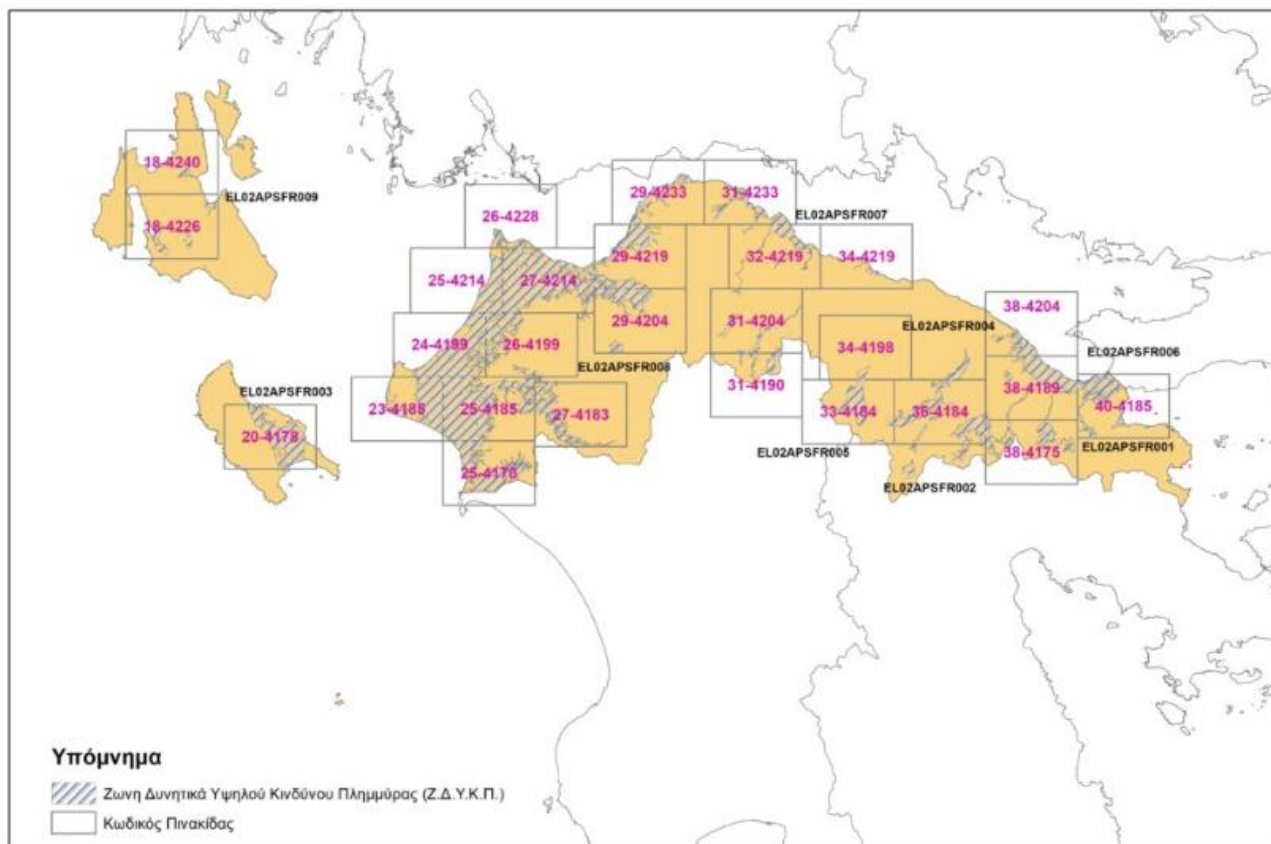


Figure 6-1: Distribution of FHMs and FRMs for river/lake flooding

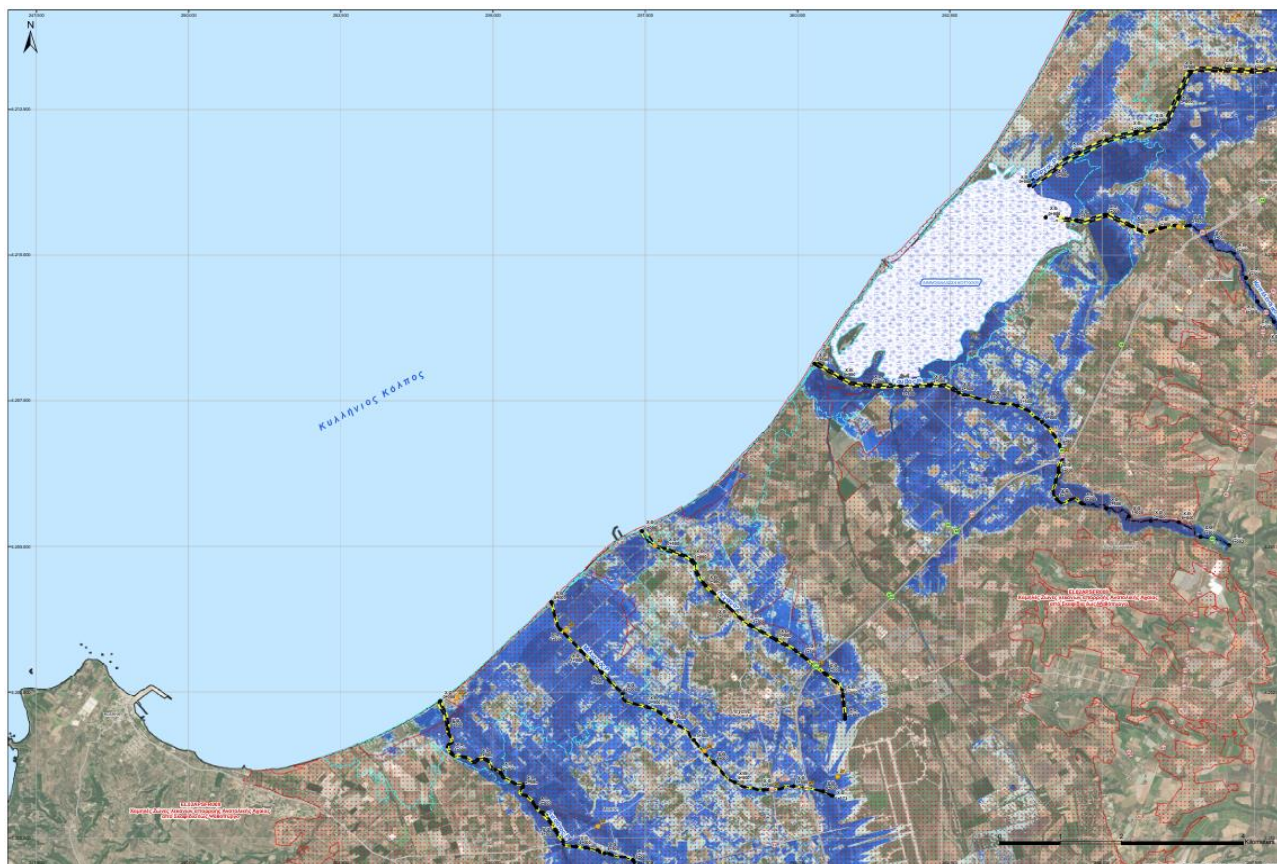


Figure 6-2: Indicative section of a FHM from river/lake flooding in the wider area of Eastern Achaia along the Kyllinian Gulf, EL02APSFR008, with color grading of maximum depth for T=100 years return period

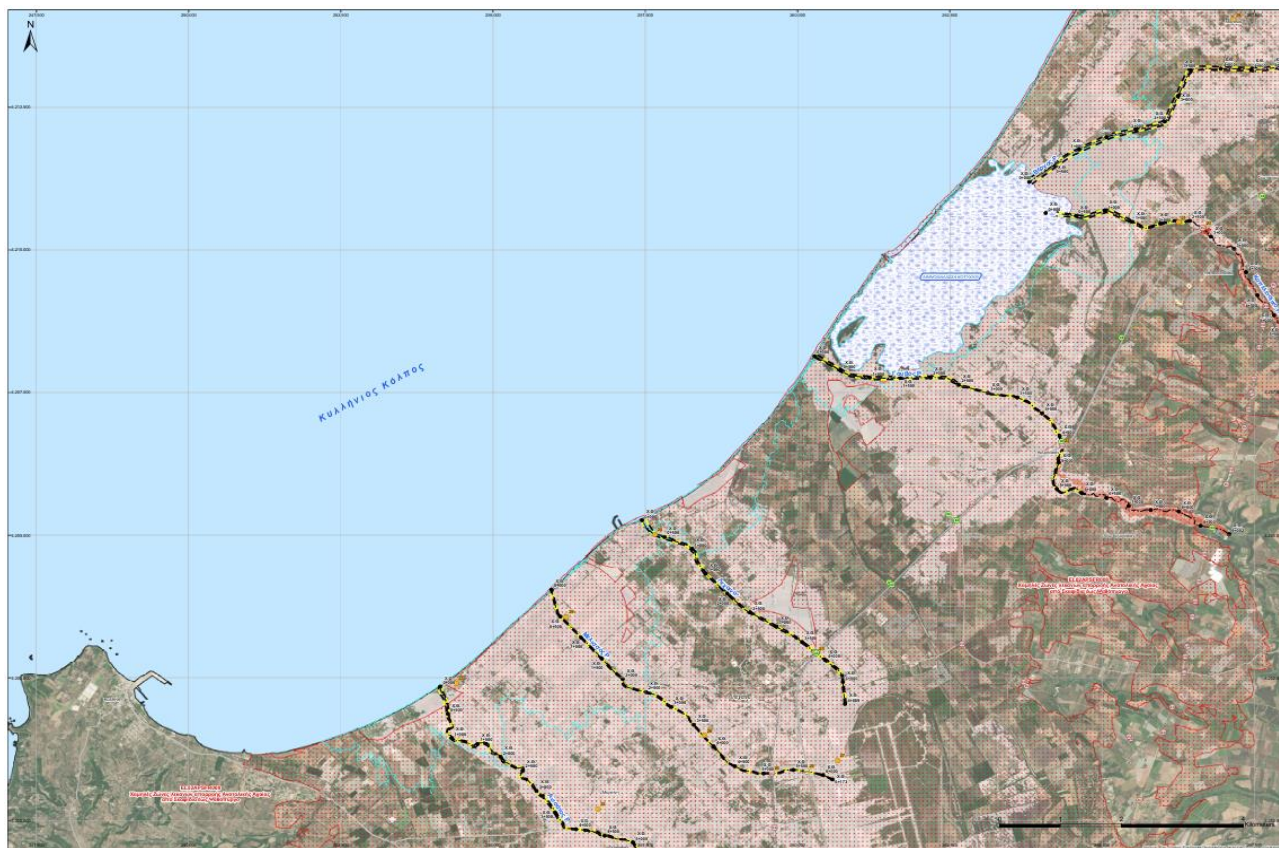


Figure 6-3: Indicative section of a FHM from river/lake flooding in the wider area of Eastern Achaia along the Kyllinian Gulf, EL02APSFR008, with color grading of maximum depth for T=100 years return period

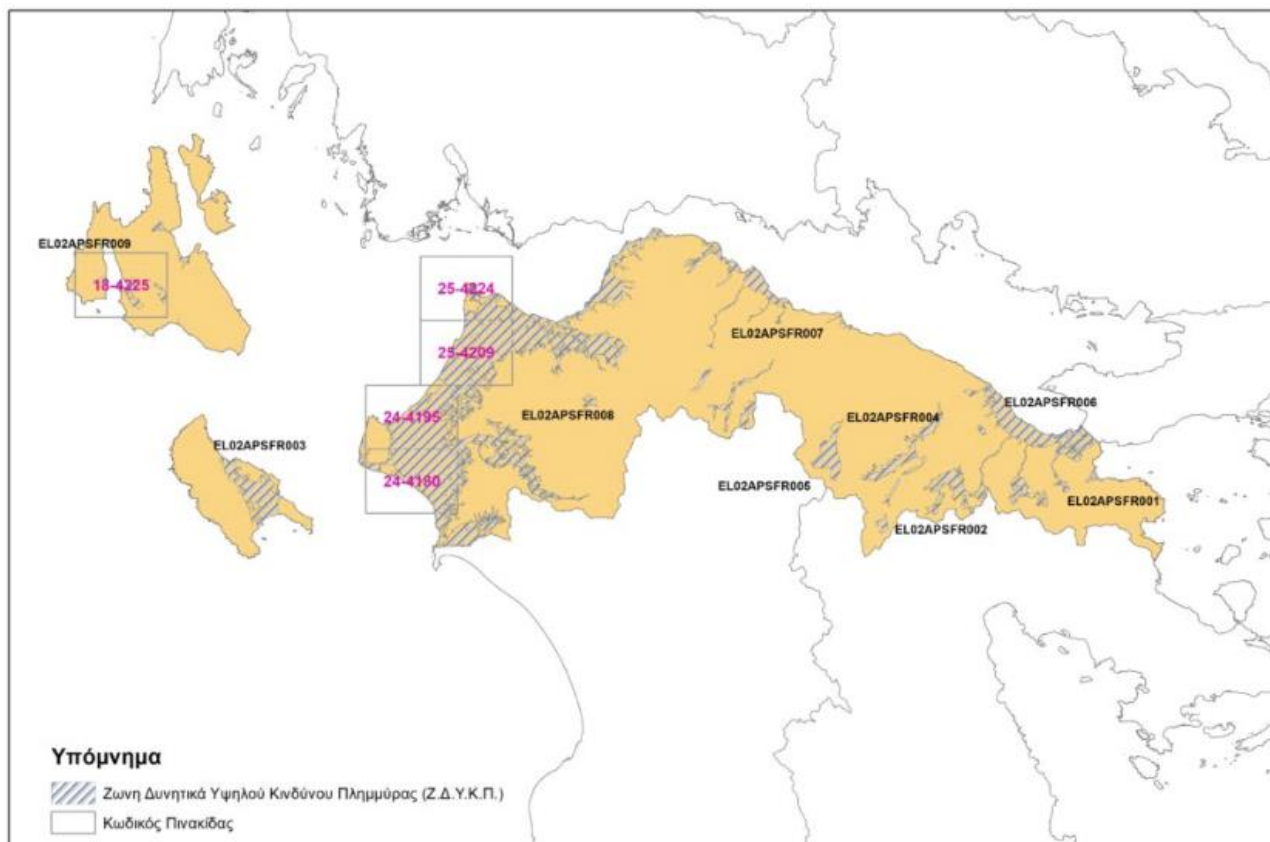


Figure 6-4: Distribution of FHMs and FRMs from sea flooding

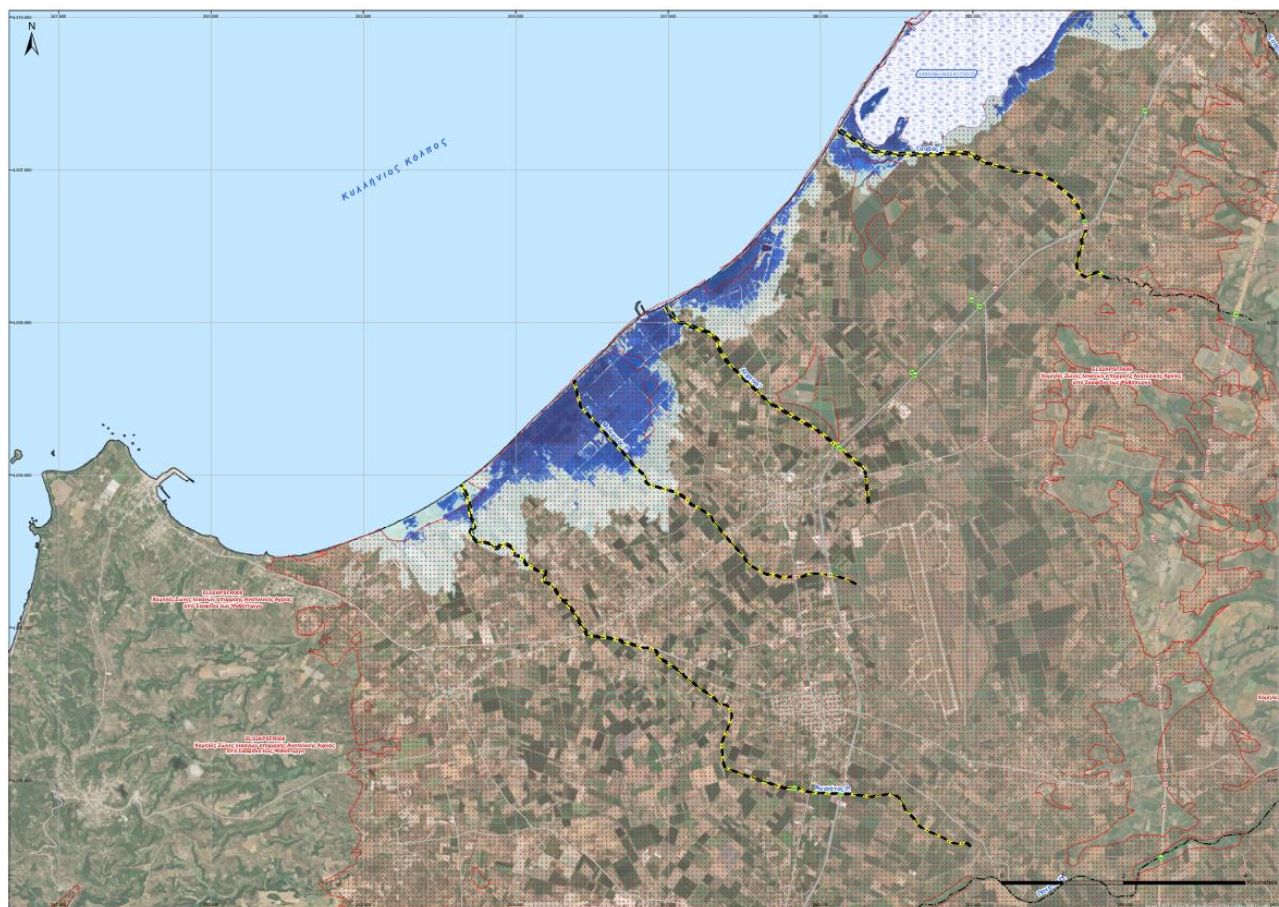


Figure 6-5: Indicative section of a FHM from sea flooding in the wider area of Eastern Achaia along the Kyllinian Gulf, EL02APSFR008, with color grading of maximum depth for T=100 years return period

7 Flood Risk Maps – FRMs

The FRMs due to river/lake flooding are presented at a scale of 1:25,000 for the three return period scenarios (T=50, 100 and 1000 years) while the FRMs due to sea flooding are presented at the same scale but for T=50 and 100 years return period. The FRMs show land uses, economic activities, protected areas and cultural heritage monuments which fall within the inundated area.

More specifically, the FRMs depict the following elements that are inundated: affected population, health and social infrastructure, water supply infrastructure, energy infrastructure, civil protection infrastructure, rural areas, livestock units, tourist attraction spots, industries both inside and outside industrial concentrations, road network, railway network, airports, Wastewater Treatment Plants, urban waste disposal and management areas, protected areas, monuments, archaeological sites, recreational areas and settlements.

The FRMs are accompanied by the following maps:

- **Soil Erosion Map**, in scale 1:300,000, and the soil erosion classes with appropriate chromatic grading in 5 levels.
- **Flood Maximum Potential Impact Map** (for river/lake flooding and for average sea level rise), at a scale of 1:300,000 and 1:100,000, and the vulnerability classes with appropriate chromatic grading in 5 levels.
- **Flood Intensity Degree of Influence Map** (3 for river/lake flooding and for average sea level rise), at a scale of 1:300,000 and 1:100,000, and the influence level classes with appropriate chromatic grading in 5 levels.
- **Flood Impact Assessment Map** (3 for river/lake flooding and for average sea level rise), at a scale of 1:300,000 and 1:100,000, and the impact level with appropriate chromatic grading in 5 levels.

The Flood Risk Assessment in WD EL02 shows that the greatest flood risk occurs for **T=50 years**:

- Kato Almiri and the southern part of Loutra Oraias Elenis due to high activity concentration (urban and suburban development, tourism, infrastructure) and flood characteristics (EL02APSFR001)
- Agricultural lands in EL02APSFR002 due to absence of significant activities
- Laganas city and northeast to Ampelokipoi up to Zakynthos city with urban/tourist infrastructure (EL02APSFR003)
- The broader area of Stymphalia, Kionia, and Karteri due to mixed residential/agricultural land use (EL02APSFR004)
- The broader area of Achladea and Steno (EL02APSFR005), with limited flood zone activities
- Corinth, Kiato, Vrachati, Vochaikos, Zevgolio, and Assos with major infrastructure (EL02APSFR006)

DELIVERABLE 19

**Translation into English of the summary reports of the methodologies and
results of the Deliverables studies**

- Diakopto, Elaionas, and Temeni with plenty infrastructure (residential, tourism, social) (EL02APSFR007)
- Patras, Kato Achaia, Varda, Andravida, Lechaina, and Gastouni with significant human activity (EL02APSFR008)
- Sami, Lixouri, and the broader area of Koutavos with urban/tourist infrastructure (EL02APSFR009)

For **T=100 years**, the same general regions show similar flood risks, while in some APSFRs we have additional areas. More specifically:

- Kato Almiri and the southern part of Loutra Oraias Elenis due to high activity concentration (urban and suburban development, tourism, infrastructure) and flood characteristics (EL02APSFR001)
- Agricultural lands in EL02APSFR002 due to absence of significant activities
- Laganas city and northeast to Ampelokipoi up to Zakynthos city with urban/tourist infrastructure. As for the flood risk due to sea level rise, the risk ranges from very low to low (EL02APSFR003)
- The broader area of Stymphalia, Kionia, and Karteri due to mixed residential/agricultural land use (EL02APSFR004)
- The broader area of Achladea and Steno (EL02APSFR005), with limited flood zone activities
- Corinth, Kiato, Vrachati, Vochoikos, Zevgolatio, and Assos with plenty of infrastructure (EL02APSFR006)
- Diakopto, Elaionas, and Temeni with plenty infrastructure (residential, tourism, social) (EL02APSFR007)
- Patras, Kato Achaia, Varda, Andravida, Lechaina, and Gastouni with significant human activity. As for the flood risk due to sea level rise, the risk ranges from very low to low (EL02APSFR008).
- Sami, Lixouri, Agia Efimia, and the broader area of Koutavos with urban/tourist infrastructure, face flood risk due to river flooding. As for the flood risk due to sea level rise, the risk ranges from very low to moderate (EL02APSFR009).

For **T=1000 years**, similar regions are affected, with some minor expansions. More specifically:

- Kato Almiri and the southern part of Loutra Oraias Elenis due to high activity concentration (urban and suburban development, tourism, infrastructure) and flood characteristics (EL02APSFR001)
- Agricultural lands in EL02APSFR002 due to absence of significant activities
- Laganas city and northeast to Ampelokipoi up to Zakynthos city with urban/tourist infrastructure (EL02APSFR003)
- The broader area of Stymphalia, Kionia, and Karteri due to mixed residential/agricultural land use (EL02APSFR004)

DELIVERABLE 19

Translation into English of the summary reports of the methodologies and
results of the Deliverables studies

- The broader area of Achladea, Messino and Steno (EL02APSFR005), with limited flood zone activities
- Corinth, Kiato, Vrachati, Vochaikos, Zevgolatio, and Assos with plenty of infrastructure (EL02APSFR006)
- Diakopto, Elaionas, and Temeni with plenty infrastructure (residential, tourism, social) (EL02APSFR007)
- Patras, Kato Achaia, Varda, Andravida, Lechaina, and Gastouni with significant human activity (EL02APSFR008)
- Sami, Lixouri, Agia Efimia, and the broader area of Koutavos with urban/tourist infrastructure, face flood risk due to river flooding (EL02APSFR009)

The areas presenting high, medium and low flood risk for all return periods and all the flood sources considered are presented in detail within the Flood Risk Management Plan of the Northern Peloponnese Water District (EL02). The following figures show the percentage of the flood risk classes' distribution within the Northern Peloponnese WD both from river/lake flooding and from sea level rise, respectively.

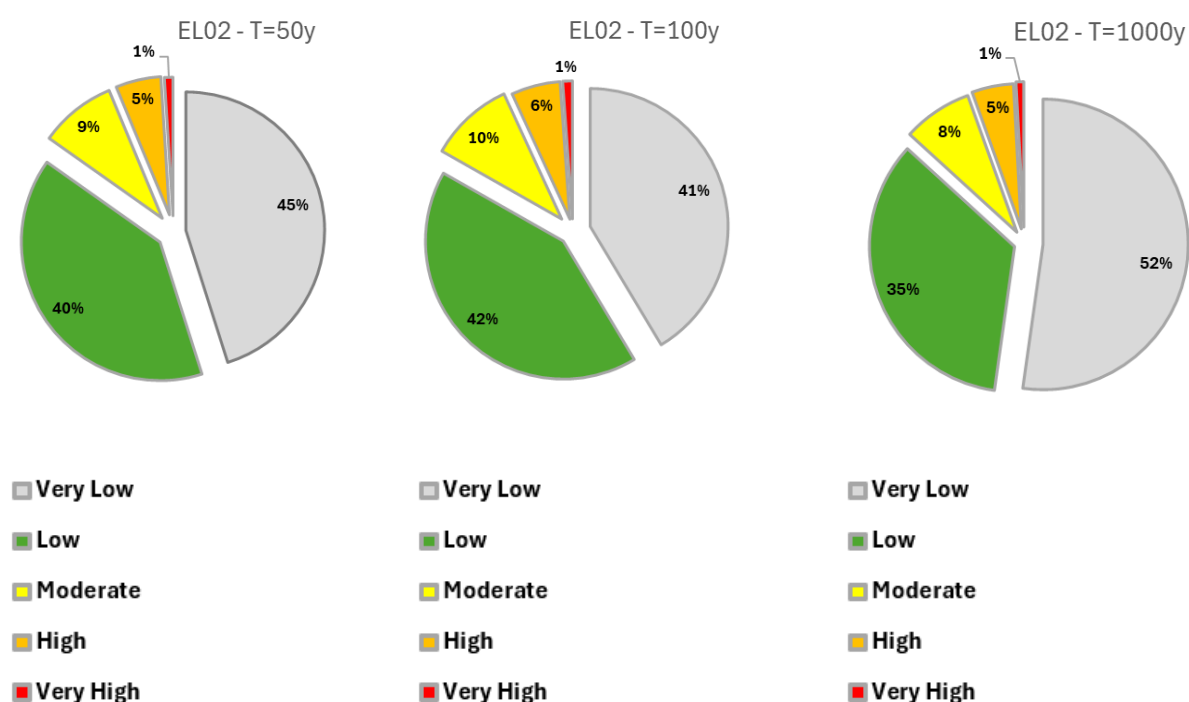


Figure 7-1: Percentage of flood risk classes from river/lake flooding in the WD EL02 for T=50, T=100, and T=1000

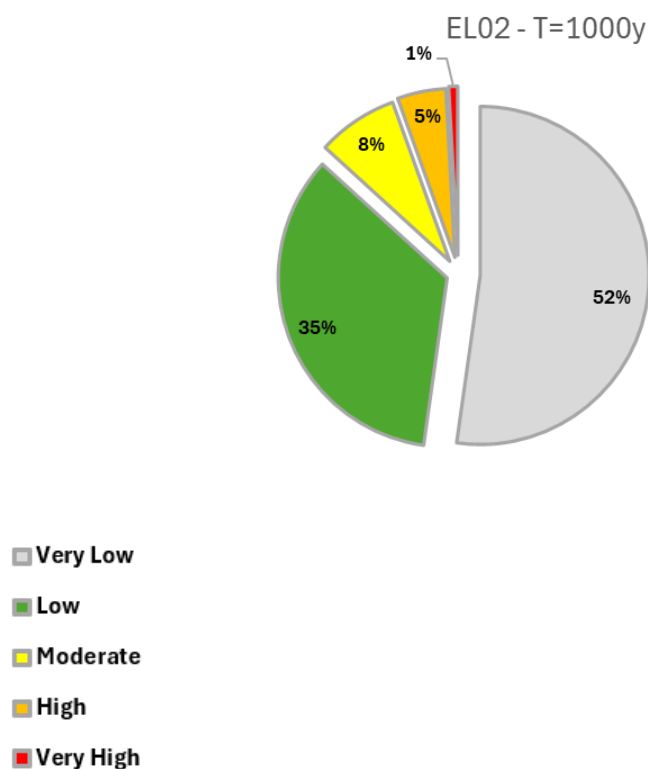


Figure 7-2: Percentage of flood risk classes from sea level rise flooding in the WD EL02 for T=50, T=100, and T=1000

The table below summarizes, for each APSFR in EL02, the potentially affected economic activities and the important infrastructure located within the flooded areas by a T=1000-year return period event.

DELIVERABLE 19

Translation into English of the summary reports of the methodologies and
results of the Deliverables studies

Table 7-1: Amount of infrastructure and economic activities located within the flooded area of a T=1000-year event for each APSFR in the Northern Peloponnese WD

Infrastructure – Economic Activity	EL02APSFR001 T = 1000 years	EL02APSFR002 T = 1000 years	EL02APSFR003 T = 1000 years	EL02APSFR004 T = 1000 years	EL02APSFR005 T = 1000 years	EL02APSFR006 T = 1000 years	EL02APSFR007 T = 1000 years	EL02APSFR008 T = 1000 years	EL02APSFR009 T = 1000 years
Airports	-	-	1	-	-	-	-	2	-
Clinics	-	-	-	-	-	1	-	-	-
Monuments of National Importance	1	-	4	1	-	19	9	36	11
Monuments of International Importance	-	-	-	-	-	2	-	1	-
School Units	2	-	3	-	1	39	10	51	1
Educational Institutions	-	-	-	-	-	1	-	1	-
Fire Services	-	-	1	-	-	2	-	2	-
Health Centers	-	-	1	-	-	7	-	2	-
Boreholes	-	-	-	-	-	8	2	27	-
Industries	-	-	-	-	-	-	-	1	-
IED Industries	-	-	-	-	-	-	-	-	-
SEVESO industries	-	-	-	-	-	-	-	-	-
Other Industries	-	-	11	-	-	22	11	36	8
Livestock Farms	-	1	25	2	38	23	53	390	9

DELIVERABLE 19

Translation into English of the summary reports of the methodologies and
results of the Deliverables studies

Infrastructure – Economic Activity	EL02APSFR001 T = 1000 years	EL02APSFR002 T = 1000 years	EL02APSFR003 T = 1000 years	EL02APSFR004 T = 1000 years	EL02APSFR005 T = 1000 years	EL02APSFR006 T = 1000 years	EL02APSFR007 T = 1000 years	EL02APSFR008 T = 1000 years	EL02APSFR009 T = 1000 years
Police departments	-	-	-	-	-	3	-	3	-
Sports facilities	-	-	1	-	1	6	-	20	1
Nursing homes	-	-	-	-	-	2	-	1	-
Wastewater Treatment Plants	-	-	1	-	-	2	1	1	-
Water Treatment Plants	-	-	-	-	-	-	-	-	-
Habitats	-	-	1	1	-	-	3	4	-
PPC substations	-	-	-	-	-	-	-	3	1
Sports Facilities	-	-	-	-	-	-	2	-	-

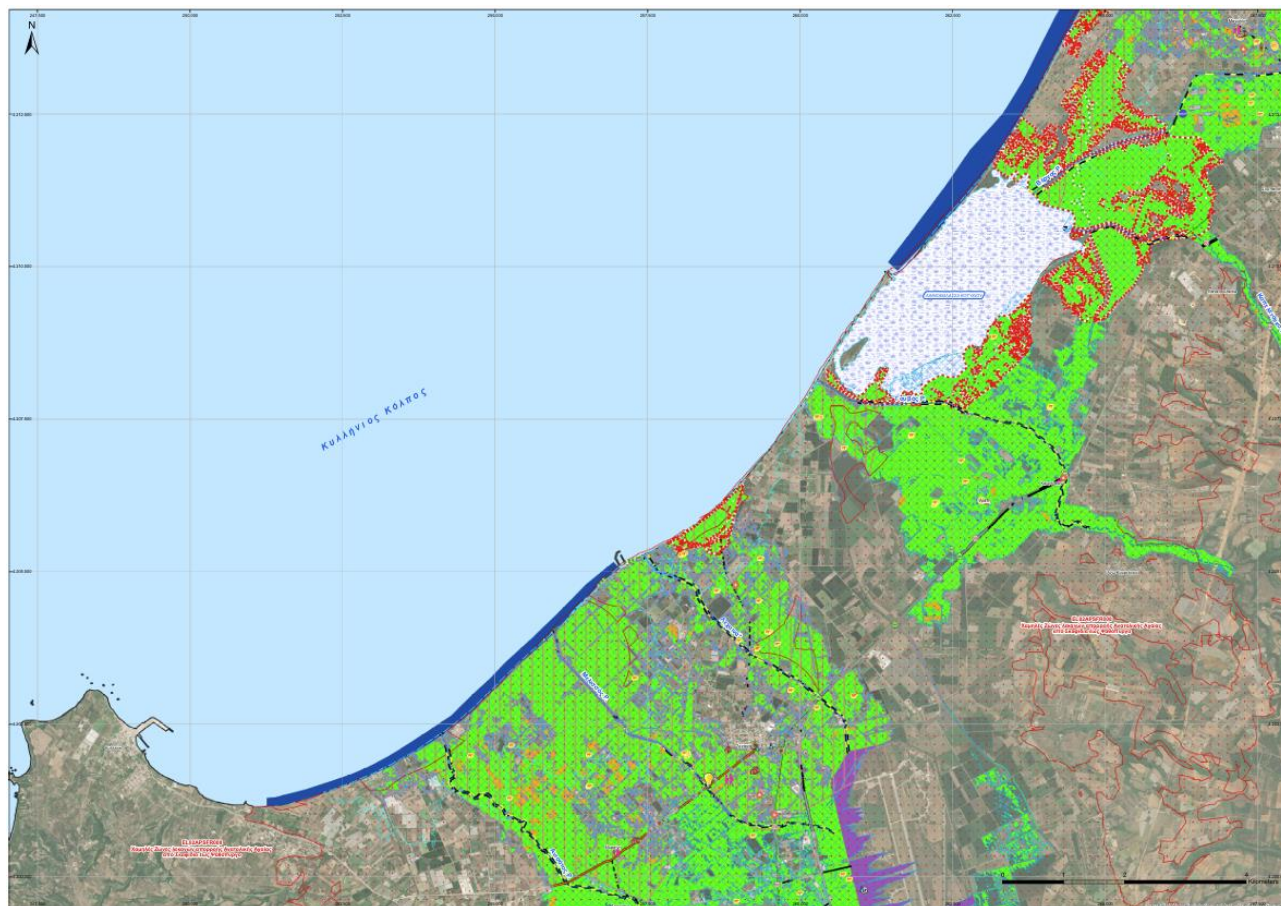


Figure 7-3: Indicative section of a FRM in the wider area of Eastern Achaia along the Kyllinian Gulf, EL02APSF008, illustrating the affected land uses for a flood event with T=100 years return period

8 Consideration of climate change in the 1st revision of the FRMPs

The European Union recognizes that changes in the intensity and frequency of extreme rainfall events, combined with land use change, are expected to increase flood risk across Europe. The present 1st revision of the FRMPs examines how climate change may affect the frequency of flood events. More specifically, it is examined whether a current flood event with a 50-, 100- or 1000-year return period will experience a decrease or increase in its return period due to climate change.

According to the methodology, climate projection data from 675 rain gauge stations across the country are used to estimate the influence of climate change on the frequency of flood events in terms of rainfall intensity. These data come from the SWICCA (Service for Water Indicators in Climate Change Adaptation, 2015-2018) program and are based on 9 combinations of Global Circulation Models (GCMs), Regional Climate Models (RCMs) and Representative Concentration Pathway (RCP) scenarios.

In the current first revision of the FRMPs, the determination of the new frequency of occurrence of the design floods—at each point along the rainfall–runoff curve based on climate projections—is carried out for **two future climate periods**:

- The middle of the century (2041-2070 or 2050s) and
- The end of the century (2071-2100 or 2080s).

For the **EL02 Water District**, the impact of climate change is quite pronounced throughout the Water District for the mid-century period (2041–2070), while for the end-century period (2071–2100), the impact is slightly reduced. More specifically:

- The greatest impact is observed in the Coastal Streams of Northern Peloponnese Basins (EL0227), where the return periods show a significant decrease - especially during the future period 2071-2100 (2080s) and particularly for the T=1000-year return period.
- For the future period 2041–2070 (2050s), the average return period of a current T=50-year flood event decreases to approximately 26 years due to climate change in the Northern Peloponnese Water District (EL02)
- For the future period 2041–2070 (2050s), the average return period of a current T=100-year flood event decreases to approximately 50 years due to climate change in the Northern Peloponnese Water District (EL02).
- For the future period 2041–2070 (2050s), the average return period of a current T=1000-year flood event decreases to approximately 586 years due to climate change in the Northern Peloponnese Water District (EL02).
- For the future period 2071-2100 (2080s), the average return period of a current T=50-year flood event decreases to approximately 30 years due to climate change in the Northern Peloponnese Water District (EL02).

DELIVERABLE 19

**Translation into English of the summary reports of the methodologies and
results of the Deliverables studies**

- For the future period 2071-2100 (2080s), the average return period of a current T=100-year flood event decreases to approximately 58 years due to climate change in the Northern Peloponnese Water District (EL02).
- For the future period 2071-2100 (2080s), the average return period of a current T=1000-year flood event decreases to approximately 708 years due to climate change in the Northern Peloponnese Water District (EL02).

9 Differences compared to the 1st FRMPs WD EL02

Compared to the 1st implementation cycle of the Directive 2007/60/EC, the main differences in the 1st revision of the FRMPs are as follows:

- New rain gauges are added from stations that were not included in the 1st implementation cycle of the FRMPs, such as the ones from the National Observatory of Athens (NoA). Most of the stations' time series that have been also used in the 1st implementation cycle are extended with the latest barometric data (up to 2022).
- The equation of the ombrian curve is modified, both in terms of its parameters and the method of its derivation. As a result, both the hyetograph and the flood hydrograph used are modified as well.
- In the 1st revision of the PFRA, the amount and boundaries of the APSFRs are changed compared to the 1st implementation cycle of the PFRA. Consequently, new basins, sub-basins and watercourses are added that fall within the revised APSFRs. Therefore, new areas are included in the fluvial flood routing analysis, while the areas examined for flood risk due to sea level rise are expanded.
- The Digital Terrain Model used in the present 1st revision of the FRMPs is the most updated from the LSO project of 2014-2015 provided by the Public Legal Entity Hellenic Cadastre with a resolution of 2m x 2m. In the 1st implementation cycle of the FRMPs, the DTM used was from the earlier LSO project of 2007-2009 with a resolution of 5m x 5m. Therefore, the DTM forming the basis of the flood routing models differs from the one used in the 1st implementation cycle.
- The calculation of the curve number CN requires both the land use data and the soil types (A, B, C, D), as defined by the underlying hydrogeological formations. The land use data used in the current implementation cycle are the most up-to-date CORINE 2018 data, whereas older versions were used in the 1st implementation cycle. As for the soil type data, some modifications are made in the current implementation cycle compared to the 1st implementation cycle, as analyzed in Deliverable 02 titled: "Analysis of regional characteristics and flooding mechanisms".
- In the current implementation cycle of the FRMPs, the burnt areas are taken into account resulting in changes to the CN values in specific basins and sub-basins, as described in detail in Chapter 7 of Deliverable 02, titled: "Analysis of regional characteristics and flooding mechanisms".
- In the current implementation cycle of the FRMPs, both data from level-volume curves and data for newly operational reservoirs, which were either not yet constructed or not in operation during the 1st implementation cycle, are taken into account.
- Given that in the current implementation cycle the most updated Corine 2018 land use data are used, the Manning coefficient for the entire Water District is modified/updated.
- Additional topographical surveys (culverts and bridges) are conducted along the rivers during the current implementation cycle, compared to the 1st implementation cycle. Furthermore,

DELIVERABLE 19

**Translation into English of the summary reports of the methodologies and
results of the Deliverables studies**

supplementary studies on existing structures are collected, providing information on their geometry and location.

- In most cases, the hydraulic analysis is performed using the 2D model in HecRas. In a few specific cases of small streams running through gullied terrain, the 1D model of HecRas is used.
- The hydraulic analysis of endorheic basins is performed based on net outflow, meaning that infiltrated rainwater is subtracted.
- Data for assessing the health and safety impact (ΕκΑ^ε) are obtained from specialized and, in some cases, newly developed databases. More specifically:
 - ✓ The 2011 census of the de facto population is taken into account with regard to urban agglomerations, in comparison to the 2001 census data which had been used in the 1st implementation cycle of the Spatial and Urban Planning Framework. It is noted that the 2021 census data are not yet available at the settlement level.
 - ✓ The base data for public hospitals are updated and enriched using the following websites: <https://www.dypede.gr/> (6th Regional Health Administration of Peloponnese, Ionian Islands, Epirus and Western Greece) and <https://www.eumedline.eu/>
 - ✓ Health Centers (HCs) and Regional Clinics (RCs) are updated and enriched using the following website: <https://www.dypede.gr/> (6th Regional Health Administration of the Peloponnese, Ionian Islands, Epirus and Western Greece)
 - ✓ The clinics are updated and enriched using the following websites: <https://www.moh.gov.gr/> and <https://www.eumedline.eu/>
 - ✓ Data on social welfare facilities and Nursing Homes, are obtained from the official websites of the Municipalities (for the social welfare facilities) and the following website: <https://www.ecclesia.gr/>.
 - ✓ Data for Water Treatment Plants (WTPs) are obtained from the official websites of Municipalities and DEYA.
 - ✓ The most updated data for primary and secondary education, both public and private, are obtained from the following website https://data.gov.gr/datasets/minedu_schools/
 - ✓ Data for Higher Education are obtained from satellite imagery (Google Earth) and from the official websites of Universities such as the University of Patras, University of Peloponnese, Hellenic Open University, etc.)
 - ✓ Information for civil protection structures such as the infrastructures of the Hellenic Police and the Fire Department are obtained from their official websites: <https://www.astynomia.gr/> and <https://www.fireservice.gr/el>
 - ✓ PPC's power substations are located using satellite imagery (Google Earth) as well as using data from the website <https://www.admie.gr/systima/perigrafi/hartis-grammon>

DELIVERABLE 19

Translation into English of the summary reports of the methodologies and
results of the Deliverables studies

- ✓ Data on public utility infrastructure such as water boreholes, springs, etc. are obtained from the systematic inventory of water boreholes of all uses throughout the country and the databases of National Register of Water Intake Points (http://lmt.ypeka.gr/public_view.html) of the Ministry of Environment Energy. Data for other infrastructure (bridges, culverts, flood control structures etc.) are obtained from the database that was updated in the context of Deliverable 02 titled: "Analysis of regional characteristics and flooding mechanisms".
- Data for assessing the economic impacts (ΕκΟ^ς) are obtained from specialized and, in some cases, newly developed databases. More specifically:
 - ✓ Data and locations of mining sites, quarries, etc. are obtained from the website: <http://www.latomet.gr/>
 - ✓ The most recent land use data (crops, greenhouses, etc.) are obtained from OPEKEPE (2021)
 - ✓ Livestock units, in terms of their spatial location, are obtained from the spatial data of OPEKEPE (2021)
 - ✓ The developed and developing tourist areas are identified according to Government Gazette 3155/B/12-12-2013 and Government Gazette 1138/B/11-6-2009
 - ✓ Information for industries and industrial parks are obtained from the website of "ETVA BUSINESS & INDUSTRIAL PARKS ", <https://www.etvavipe.gr>
 - ✓ The locations of the SEVESO and IED industries are determined from the list of SEVESO industrial units available on the geospatial data website (<http://geodata.gov.gr>) and the register of installations subject to Directive 2010/75/EE (IED Directive) as of 31/12/2013, posted on the website of the Ministry of Environment and Rural Development.
 - ✓ The remaining industrial units are identified by the 2nd revision of the River Basin Management Plan (RBMP)
 - ✓ Regarding transport infrastructure, the country's road network is sourced from the digital archives of the Ministry of Infrastructure and Transport/ General Secretariat of Infrastructure/ Road Infrastructure Directorate, Traffic Management & Road Infrastructure Registry Department. The railway network is obtained from the database of the Hellenic Railways and Transport Authority. For airports, the list of airports in Greece available on the geospatial data website 'GEODATA.gov.gr' is taken into account, and digitization is also performed based on the most recent satellite images from Google Earth.
- Data for assessing the environmental impacts (ΕκΠ^ς) are obtained from specialized and, in some cases, newly developed databases. More specifically:
 - ✓ Location and information of WWTPs are obtained from the 2nd revision of the RBMP and from the database of the General Directorate for Water regarding Wastewater Treatment Plants, under the Ministry of Environment and Energy
(<http://astikalimata.ypeka.gr/Services/Pages/Browse.aspx>)

DELIVERABLE 19

**Translation into English of the summary reports of the methodologies and
results of the Deliverables studies**

- ✓ Locations and data of uncontrolled and sanitary landfills (XADA and XYTA) are obtained from the 2nd Revision of the River Basin Management Plans (RBMPs)
- ✓ Data on habitats and biotopes obtained from their mapping as part of the designation process for areas falling under the Natura 2000 network.
- Data for assessing the cultural heritage impacts (ΕκΠοc) are obtained from:
 - ✓ Data from the Archaeological Cadastre (<https://www.arxaiologikoktimatologio.gov.gr/>) for cultural heritage monuments of national and regional importance, for monuments of historical and cultural importance and museums.
- In the present implementation cycle, the soil erosion maps use the most updated data from the European Soil Data Centre (ESDAC) of the Joint Research Centre (<http://esdac.jrc.ec.europa.eu/>) for the quantification of the rainfall erosivity factor R, soil erodibility factor K, the topographic coefficient LS, cover-management factor C and the support practice factor P.
- The effect of climate change on the frequency of extreme events, particularly in terms of rainfall intensity, is taken into account.

10 Program of measures of the 1st revision of FRMPs for the Northern Peloponnese WD EL02

10.1 Objectives of the 1st revision of FRMPs for the Northern Peloponnese WD EL02

The **general objectives** from the 1st implementation cycle of the FRMPs for the Northern Peloponnese WD EL02 are determined as follows:

- Mitigating exposure to flooding (Objective S1)
- Reducing the probability of flooding (Objective S2)
- Improving flood preparedness (Objective S3)
- Enhancing post-flood recovery mechanisms (Objective S4)

The above-mentioned general objectives correspond to the four action pillars of the Flood Risk Management Plans (Prevention, Protection, Preparedness, Rehabilitation) and are of a strategic nature. In this 1st revision of the **Flood Risk Management Plans**, the above-mentioned general objectives are further detailed into specific objectives. These are defined in order to identify, differentiate and clarify the individual goals that collectively contribute to the effective achievement of each general objective.

To achieve **General Objective S1 -mitigate exposure** of human health, environment, cultural heritage and economic activities **to flooding-** the following specific objectives are defined:

- S1.1: implementation of actions to gather, supplement, organize and improve available information
- S1.2: implementation of actions to update and organize the meteorological and hydrometric network in order to improve the level of knowledge for flood prevention
- S1.3: adoption of appropriate conditions and restrictions to be imposed in accordance with the FRMPs.

To achieve **General Objective S2 -reduce the probability of flooding** and thereby increase the protection level of human health, the environment, cultural heritage, and economic activities- the following specific objectives are defined:

- S2.1: implementation of environmental actions and measures for the retention, formation and management of the flood zone in the mountainous areas of the watersheds, as well as water retention measures in lowlands to reduce flood risk.
- S2.2: implementation of actions and measures for the utilization of retention ponds, modernization, restoration and construction of drainage networks, stormwater management and flood protection works, to reduce the flood risk through alternative means.

DELIVERABLE 19

Translation into English of the summary reports of the methodologies and
results of the Deliverables studies

- S2.3: implementation of actions and measures to strengthen flood risk management practices at the protection stage, through the promotion of strategic planning for flood protection and stormwater management projects, while also promoting nature-based retention solutions or controlled flooding, in order to improve runoff management through appropriate legislative and administrative measures.

To achieve **General Objective S3 -improve flood preparedness** and mitigate the impacts of flooding on human health, the environment, cultural heritage and economic activities- the following specific objectives are defined:

- S3.1: implementation of actions and measures to develop early warning systems for floods, as well as to organize and authorize the replacement or maintenance of embankments, in order to enhance flood preparedness.
- S3.2: implementation of non-structural interventions, actions, and measures for the education, information, and awareness-raising of the public and stakeholders, as well as initiatives for the pre-identification of alert thresholds and the marking/warning of areas that are hazardous during flooding, in order to improve the level of flood preparedness.
- S3.3: implementation of actions and measures for the development of plans and operational protocols to organize and strengthen flood risk management practices at the preparedness stage, through appropriate non-structural interventions and legislative/administrative measures.

To achieve **General Objective S4 -enhance post-flood recovery mechanisms** of affected areas (people, environment, cultural heritage and economic activities)- the following specific objectives are defined:

- S4.1: improvement of the damage assessment and compensation mechanism following a flood event through the implementation of economic and legislative/ administrative actions and measures aimed at regulating the procedures and responsibilities for damage recording.
- S4.2: improvement of rehabilitation efforts through environmental actions and measures aimed at establishing post-flood recovery mechanisms.
- S4.3: improvement of the rehabilitation mechanisms following a flood event through the implementation of economic and legislative/ administrative actions and measures aimed at supporting flood-affected populations.

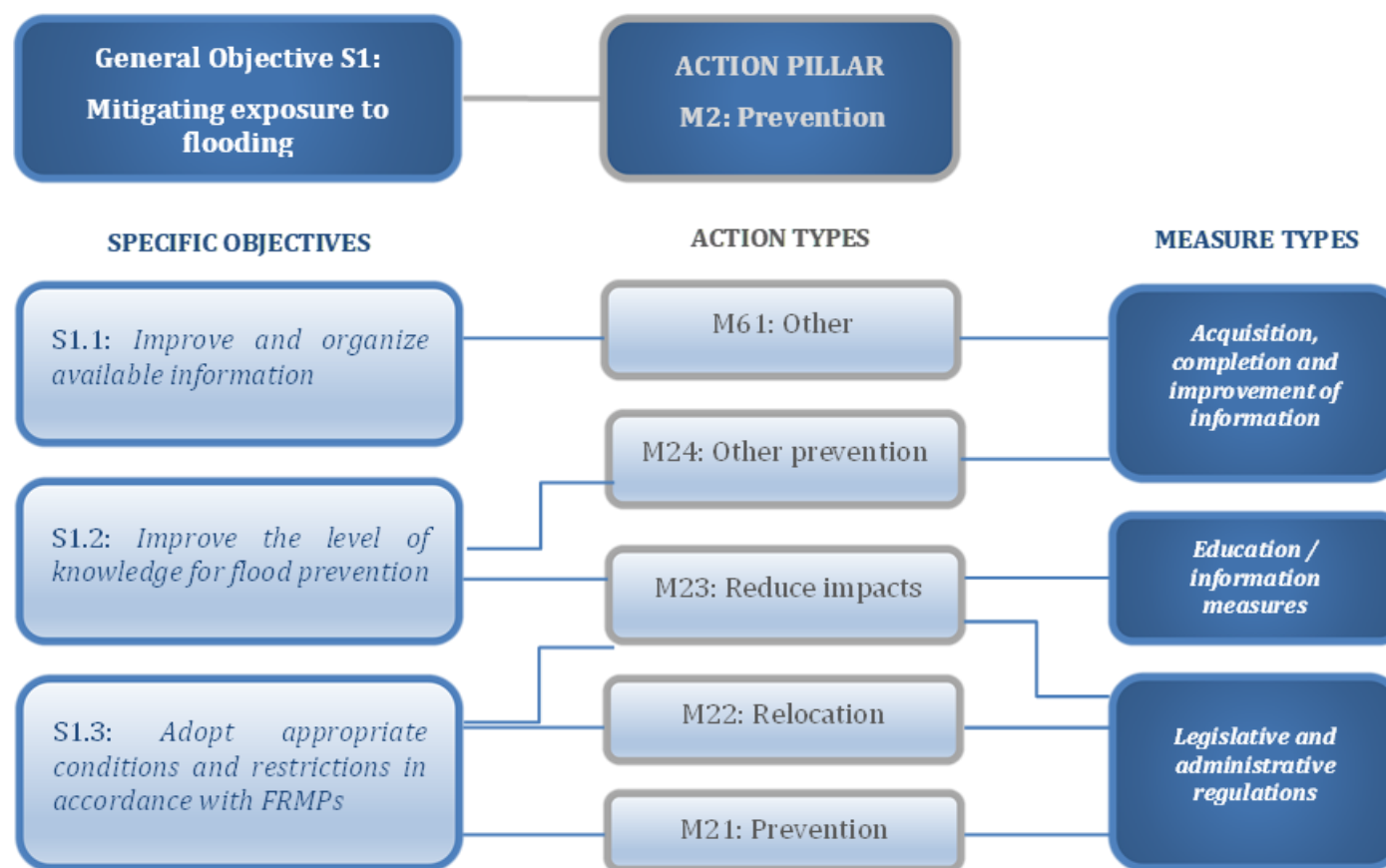


Figure 10-1: Correlation diagram of General Objective S1 - Specific Objectives with Action and Measure Types of the action pillar M2 Prevention¹ of the 1st revision of FRMPs

¹ In the diagram above, the dashed lines alternate with solid lines only for reasons of clear illustration and without any semantic difference.

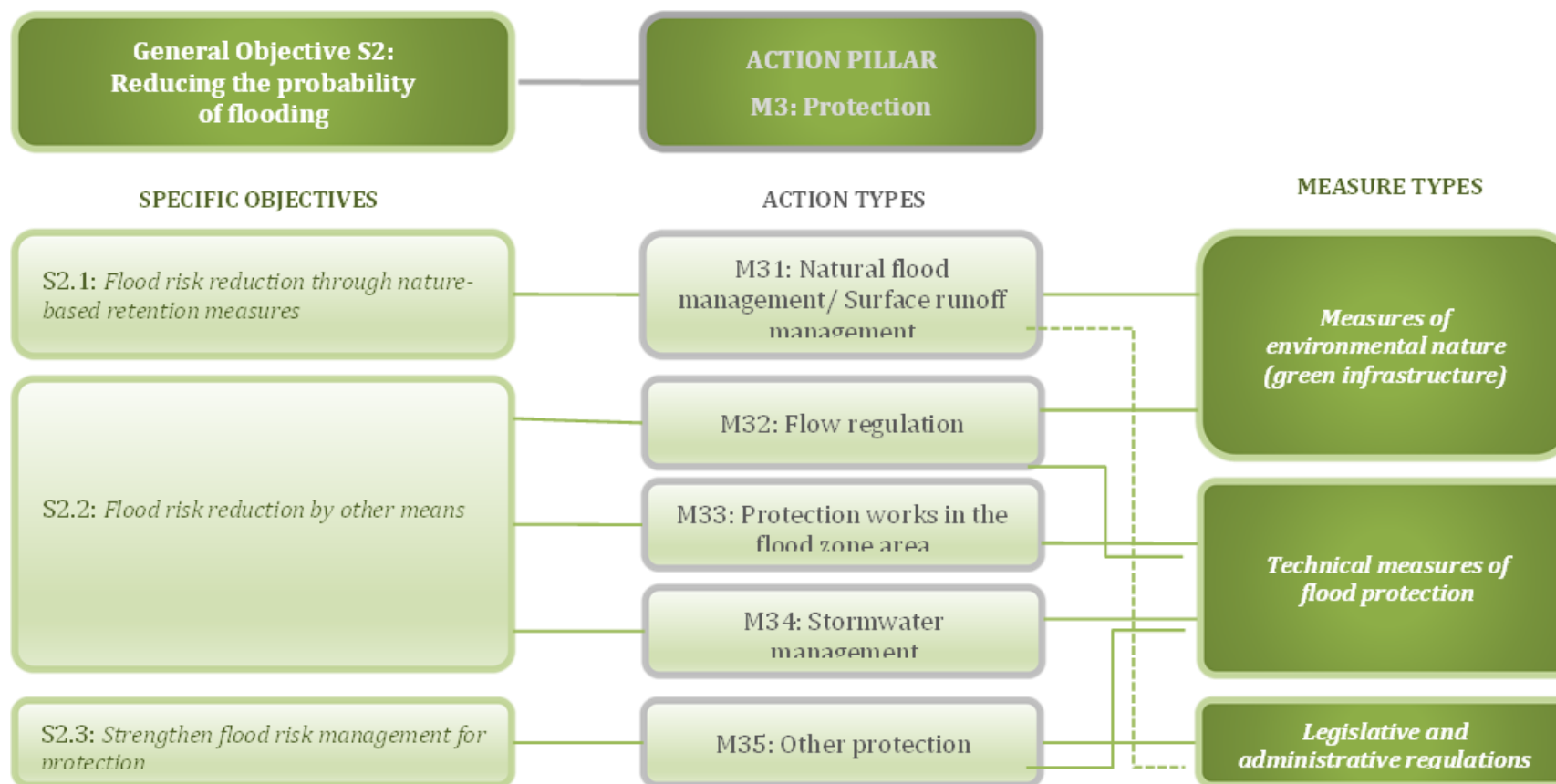


Figure 10-2: Correlation diagram of General Objective S2 - Specific Objectives with Action and Measure Types of the action pillar M3 Protection² of the 1st revision of FRMPs

² In the diagram above, the dashed lines alternate with solid lines only for reasons of clear illustration and without any semantic difference.

DELIVERABLE 19

Translation into English of the summary reports of the methodologies and results of the Deliverables studies

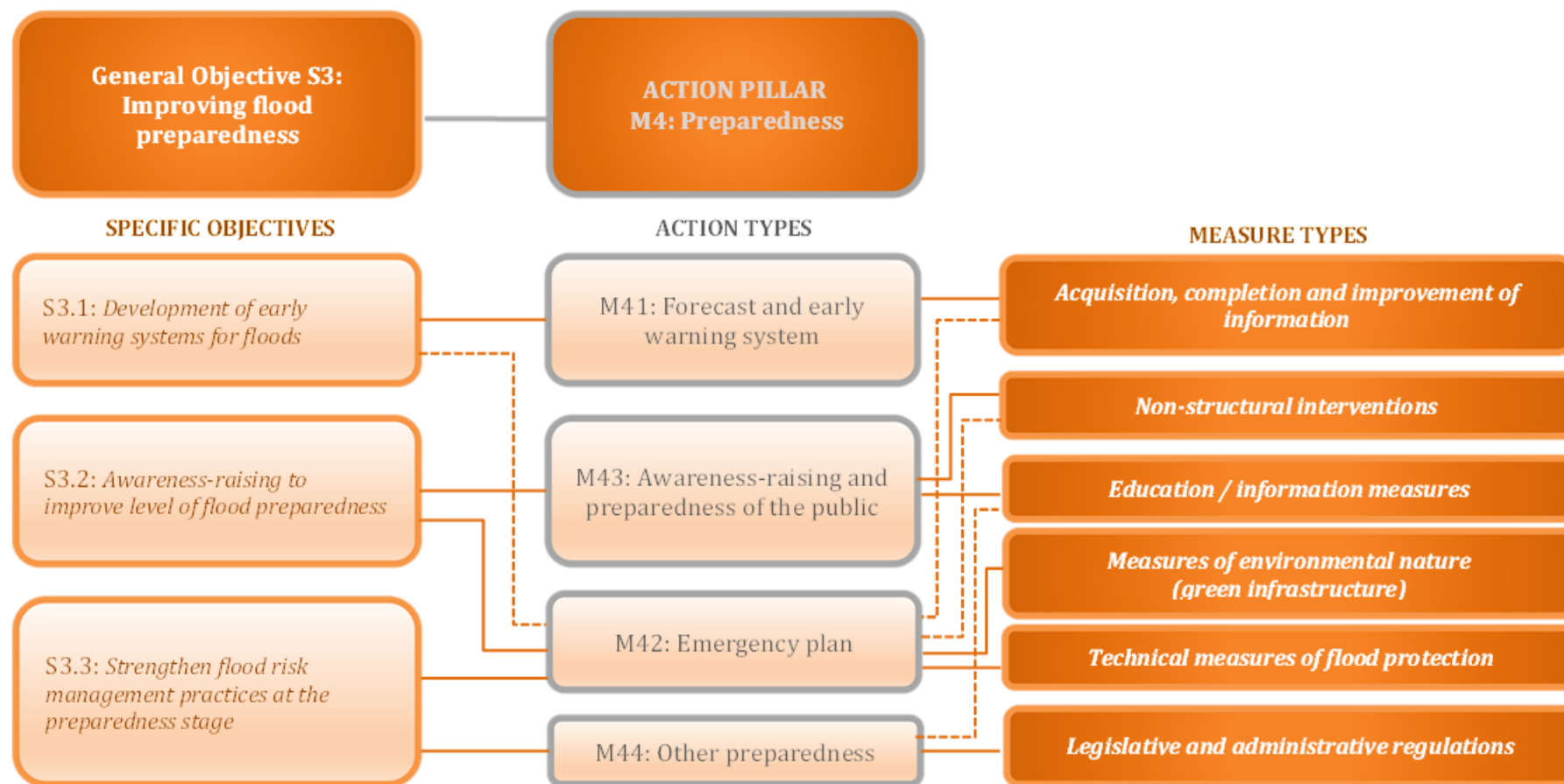


Figure 10-3: Correlation diagram of General Objective S1 - Specific Objectives with Action and Measure Types of the action pillar M2 Preparedness³ of the 1st revision of FRMPs

³ In the diagram above, the dashed lines alternate with solid lines only for reasons of clear illustration and without any semantic difference.

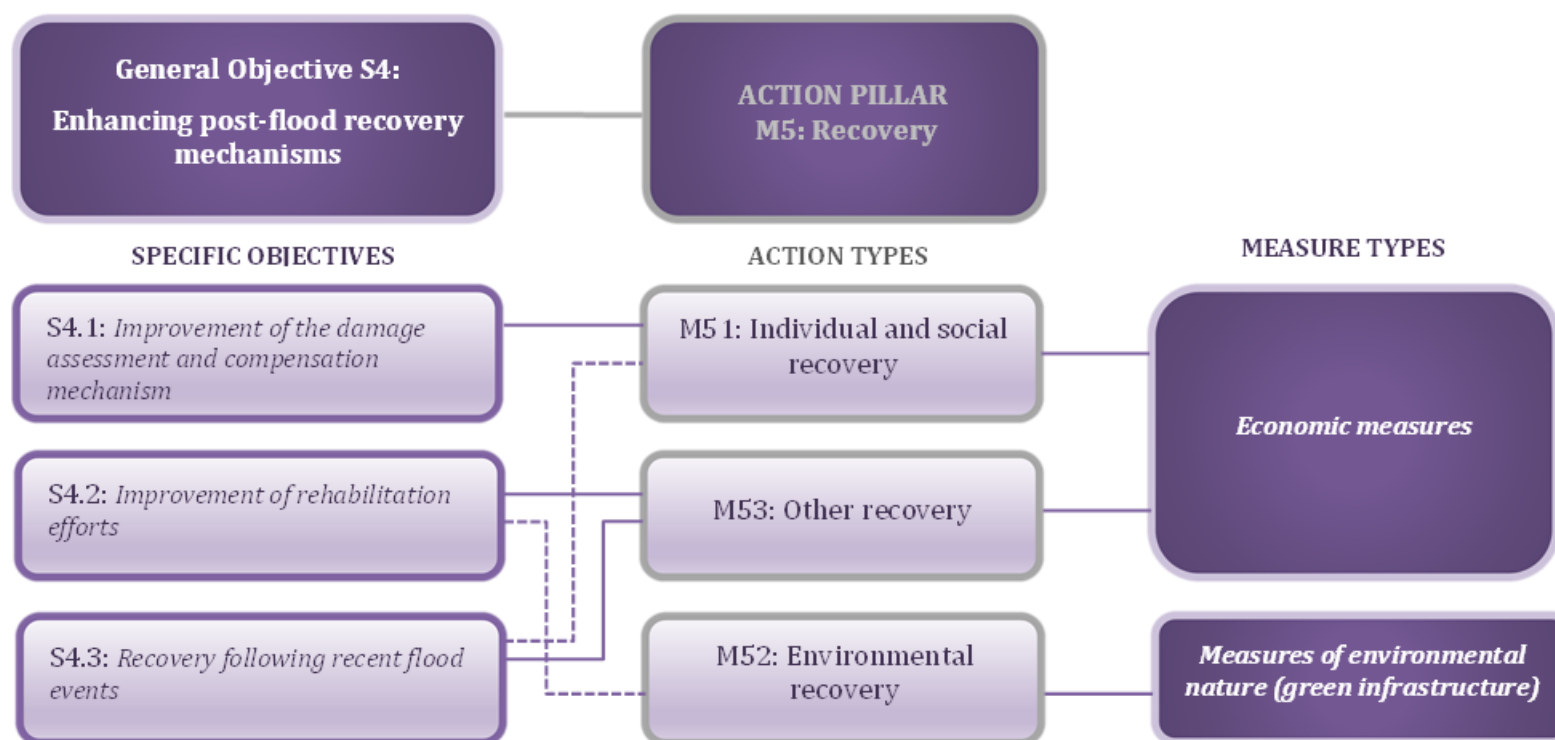


Figure 10-4: Correlation diagram of General Objective S2 - Specific Objectives with Action and Measure Types of the action pillar M5 Rehabilitation⁴ of the 1st revision of FRMPs

⁴ In the diagram above, the dashed lines alternate with solid lines only for reasons of clear illustration and without any semantic difference.

10.2 Preliminary Assessment of a set of measures

In the context of this 1st revision of the FRMPs, a Preliminary Assessment of a set of measures is conducted. Following this assessment, out of a total of 40 measures examined, 32 are selected for further investigation regarding their applicability in WD EL02, while 8 measures are excluded. However, it is noted that after the consultation process, the measure titled: *"Provision of incentives for private flood insurance"* is also excluded, even though it was initially qualified according to the methodology of the Preliminary Assessment.

Thus, out of the 32 measures that are selected for further investigation regarding their applicability in WD EL02 and are put up for consultation, **a total of 31 measures are finally proposed**. Of these, 9 correspond to General Objective S1, 12 to General Objective S2, 8 to General Objective S3 and 2 to General Objective S4. Finally, 14 out of the 31 measures are applied either to the entire Northern Peloponnese Water District EL02 or to all the APSFRs. The remaining 17 measures are applied at selected locations within individual APSFRs, based on the available data and calculations

10.3 FRMP's program of measures for the Northern Peloponnese WD EL02

The 31 measures included in this 1st revision of the FRMPs are presented in appropriate measure sheets, with specific color grading according to the General Objective they serve: Blue for S1, Green for S2, Orange for S3 and Purple for S4. Under each measure sheet, a paragraph explains the necessity of implementing the measure and its relevance to the FRMP. For the 17 measures applied to individual APSFRs, the corresponding sheets are also included within each respective APSFR. The 31 measures finally proposed in this FRMP are presented in the table below.

DELIVERABLE 19

Translation into English of the summary reports of the methodologies and results of the Deliverables studies

Table 10-1: Linking measures to the spatial level of implementation

Measure Code	Measure Name	General Objective	ALL APSFR / Water District EL02	Specific APSFR	Authorities responsible for the implementation of measures
EL_02_61_01	Development of a Monitoring System for the Flood Risk Management Plan's Program of Measures	S1. Mitigating exposure to flooding	✓		Decentralized Administration of Peloponnese, Western Greece and the Ionian Sea – Peloponnese Water Directorate
EL_02_21_01	Alignment of the urban development plans with the provisions of the FRMPs		✓		Ministry of Urban Planning and Environment (General Secretariat for Spatial Planning and Urban Environment - GSSP)
EL_02_21_02	Building and structural regulations within the 100-year flood zone			EL02APSFR001 EL02APSFR006 EL02APSFR007 EL02APSFR008 EL02APSFR009	Ministry of Urban Planning and Environment (General Secretariat for Spatial Planning and Urban Environment - GSSP)
EL_02_21_03	Adaptation of the urban development plans in flood prone areas (retention basins)		✓		Ministry of Urban Planning and Environment (General Secretariat for Spatial Planning and Urban Environment - GSSP)
EL_02_21_04	Actions to prevent and protect rural development within the APSFRs		✓		Ministry of Agriculture and Rural Development
EL_02_23_01	Flood protection measures for the boreholes of the water service providers			EL02APSFR003 EL02APSFR005 EL02APSFR006 EL02APSFR008	(1) Service Providers Water supply (2) DECENTRALIZED ADMINISTRATION OF PELOPONNESE, WESTERN GREECE AND IONIAN (Peloponnese Water Directorate)
EL_02_24_01	Restructuring and modernization of the meteorological and hydrometric data collection network		✓		Ministry of Water Resources (General Directorate of Water)
EL_02_24_02	Collection and digitization of data regarding stream delineation and flood control structures.		✓		Ministry of Technical and Economic Affairs (Technical Chamber of Greece) and Ministry of Economic Affairs and Energy

DELIVERABLE 19

Translation into English of the summary reports of the methodologies and results of the Deliverables studies

Measure Code	Measure Name	General Objective	ALL APSFR / Water District EL02	Specific APSFR	Authorities responsible for the implementation of measures
EL_02_24_03	Creation of a national Flood Event database and development of related interactive online platform		✓		Ministry of Water Resources (General Directorate of Water)
EL_02_31_01	Implementation of water control measures in upland regions	S2. Reducing the probability of flooding	✓	EL02APSFR002 EL02APSFR003 EL02APSFR004 EL02APSFR005 EL02APSFR006 EL02APSFR007 EL02APSFR008 EL02APSFR009	Ministry of Forestry (Forest Directorates), Forestry Offices
EL_02_31_02	Nature-based water retention structures in the lowlands		✓	EL02APSFR003 EL02APSFR006 EL02APSFR007 EL02APSFR008 EL02APSFR009	MINISTRY OF ENVIRONMENT (Directorate of Flood Control and Land Improvement Projects D19), REGION OF PELOPONNESE (Directorates of Technical Works / Sub-Directorates of Technical Works PE), MUNICIPALITIES
EL_02_31_03	Implementation of natural water retention measures / SUDs practices for projects and activities of subcategory A1 and A2 of Law 4014/2011, as in force.		✓		Implementing body of each project
EL_02_32_01	Multipurpose reservoirs with a flood protection component			EL02APSFR006	The project owner
EL_02_32_02	Utilization of existing reservoirs for flood retention			EL02APSFR005 EL02APSFR008	Reservoir Management Authorities
EL_02_33_01	Modernization and rehabilitation of drainage networks			EL02APSFR006 EL02APSFR007 EL02APSFR008	Ministry of Environment and Water (Directorate of Flood Control and Land Improvement Projects D19), PELOPONNESE REGION (Directorate of Technical Works / Sub-Directorates of Technical Works PE), OEB

DELIVERABLE 19

Translation into English of the summary reports of the methodologies and results of the Deliverables studies

Measure Code	Measure Name	General Objective	ALL APSFR / Water District EL02	Specific APSFR	Authorities responsible for the implementation of measures
EL_02_33_02	Flood protection measures			EL02APSFR003 EL02APSFR006 EL02APSFR007 EL02APSFR008 EL02APSFR009	MINISTRY OF ENVIRONMENT (Directorate of Flood Control and Land Improvement Projects D19), REGION OF WESTERN GREECE (Directorate of Technical Works / Sub-Directorates of Technical Works PE), MUNICIPALITIES
EL_02_34_01	Modernization, replacement and maintenance of existing stormwater drainage networks			EL02APSFR001 EL02APSFR003 EL02APSFR006 EL02APSFR007 EL02APSFR008 EL02APSFR009	PELOPONNESE REGION (Directorate of Technical Works / Sub-Directorates of Technical Works of the Region), MUNICIPALITIES, DEYA, Road network maintenance bodies
EL_02_35_02	Integrated Design of flood protection measures (Master Plan) and construction of the proposed measures			EL02APSFR001 EL02APSFR002 EL02APSFR004 EL02APSFR005 EL02APSFR006 EL02APSFR007 EL02APSFR008 EL02APSFR009	ACTION [A] YKKPP (Technical Chamber of Greece), ¹ ACTION [B] & [C]: To be determined by the Masterplan
EL_02_35_03	Evaluation and maintenance of existing water control measures in upland regions			EL02APSFR001 EL02APSFR003 EL02APSFR004 EL02APSFR005 EL02APSFR006 EL02APSFR007 EL02APSFR008 EL02APSFR009	Ministry of Forestry (Forest Directorates), Forestry Offices

¹According to art. 225 of Law 4782/2021 (Government Gazette 36/A'/9.3.2021) and the Ministry of Justice No. 1086/2024 (Government Gazette 3955/B'/5.7.2024).

DELIVERABLE 19

Translation into English of the summary reports of the methodologies and results of the Deliverables studies

Measure Code	Measure Name	General Objective	ALL APSFR / Water District EL02	Specific APSFR	Authorities responsible for the implementation of measures
EL_02_35_04	Land use management		✓		PELOPONNESE REGION
EL_02_35_05	Maintenance and rehabilitation of existing flood protection structures			EL02APSFR003 EL02APSFR006 EL02APSFR007 EL02APSFR008 EL02APSFR009	REGION OF WESTERN GREECE (Directorate of Technical Works / Sub-Directorates of Technical Works of the Regional Government)
EL_02_41_01	Development and operation of an early warning system for floods	S3. Improving flood preparedness		EL02APSFR002 EL02APSFR004 EL02APSFR006 EL02APSFR008	• Development agency: Ministry of Education, Culture and Sports • Operating body: YKKPP (General Secretariat of Civil Protection) or PELOPONNESE REGION and REGION OF WESTERN GREECE (Autonomous Civil Protection Directorate)
EL_02_42_01	Updating of Emergency Plans, and standardization of emergency flood response procedures / Development of a Local Action Plan Memorandum		✓		REGION OF PELOPONNESE AND REGION OF WESTERN GREECE and IONIAN ISLANDS REGION (Autonomous Civil Protection Directorate), MUNICIPALITIES (Civil Protection Offices), DECENTRALIZED ADMINISTRATION OF PELOPONNESE, WESTERN GREECE AND IONIAN (Civil Protection Directorate)
EL_02_42_03	Identification of borrow pit locations for embankment restoration/maintenance in case of emergency			EL02APSFR003 EL02APSFR006 EL02APSFR007 EL02APSFR008	REGION OF WESTERN GREECE (Directorate of Technical Works / Sub-Directorates of Technical Works of the Regional Directorate, Independent Directorate of Civil Protection)
EL_02_42_05	Plan for controlled flooding of lowland areas to protect settlements and critical infrastructure			EL02APSFR001 EL02APSFR003 EL02APSFR004 EL02APSFR006 EL02APSFR007 EL02APSFR008	YPYME (Directorate of Flood Control and Land Improvement Projects D19), REGION OF PELOPONNESE (Directorate of Technical Works / Sub-Directorates of Technical Works of the Region), YKKPP (General Secretariat of Civil Protection)

DELIVERABLE 19

Translation into English of the summary reports of the methodologies and results of the Deliverables studies

Measure Code	Measure Name	General Objective	ALL APSFR / Water District EL02	Specific APSFR	Authorities responsible for the implementation of measures
EL_02_43_01	Awareness-raising actions for the public, local authorities and communities against flood risk		✓		YKKPP, Ministry of Education, Ministry of Education, DECENTRALIZED ADMINISTRATION OF PELOPONNESE, WESTERN GREECE AND IONIAN REGIONS (Civil Protection Directorate), PELOPONNESE REGION, WESTERN GREECE REGION AND IONIAN ISLANDS REGION (Autonomous Civil Protection Directorate), MUNICIPALITIES in collaboration with the administration of school units
EL_02_43_02	Warning system to avoid crossing Irish crossings during flood events			EL02APSFR001 EL02APSFR002 EL02APSFR003 EL02APSFR006 EL02APSFR007 EL02APSFR008 EL02APSFR009	The competent road network body
EL_02_44_01	Formulation of a regulatory framework for restoring the conveyance capacity of streambeds and for the maintenance and management of riparian vegetation		✓		Ministry of National Economy and Tourism in collaboration with co-responsible bodies
EL_02_42_04	Establishment of alert thresholds for critical watercourses of WD EL02 based on the provisions of laws 4662/2020 and 5075/2023			EL02APSFR003 EL02APSFR006 EL02APSFR007 EL02APSFR008	REGION OF WESTERN GREECE (Directorate of Technical Works / Sub-Directorates of Technical Works of the Regional Directorate, Independent Directorate of Civil Protection)
EL_02_51_01	Restoration of infrastructure following recent flooding events	S4. Enhancing post-flood recovery mechanisms	✓		Competent bodies, depending on the type of infrastructure, for recording, preparing studies and remediation/compensation, in accordance with applicable legislation

DELIVERABLE 19

Translation into English of the summary reports of the methodologies and results of the Deliverables studies

Measure Code	Measure Name	General Objective	ALL APSFR / Water District EL02	Specific APSFR	Authorities responsible for the implementation of measures
EL_02_52_01	Identification of locations for (temporary or permanent) sediment deposition sites (sediment storage areas)		✓		PELOPONNESE REGION (Directorate of Technical Works / Sub-Directorates of Technical Works of the Regional Directorate, Independent Directorate of Civil Protection)

DELIVERABLE 19

**Translation into English of the summary reports of the methodologies and
results of the Deliverables studies**

Below, an **indicative measure sheet is provided**. Each measure sheet is color-coded according to the General Objective it addresses. It should be noted that there are differences between the measure sheets of the 1st revision and those of the initial FRMPs; some old fields are modified and new fields are added to facilitate understanding, implementation and monitoring of each measure.

MEASURE NAME	Includes the name of the measure
METER CODE	The Measures are coded as follows: EL_XX (WD code)_XX (Measure Type according to WISE) _XX (Measure serial number)
CORRELATION WITH 1ST CYCLE MEASUREMENT	Continuing from the 1 st FRMP or New Measure
PILLAR OF ACTION	Prevention, Protection, Preparedness, Recovery
GENERAL OBJECTIVE	The General Objective of the FRM the measure addresses (S1, S2, S3, S4)
TYPE OF FRM MEASURE	The code of the FRM type of measure and its description are given.
TYPE OF NATURAL WATER RETENTION MEASURE	The code of the type of Natural Water Retention measure and its description are given.
SPECIFIC OBJECTIVE	The Specific Objective of the FRM the measure addresses (S1.1, S1.2, S1.3, S2.1, S2.2, S2.3, S3.1, S3.2, S3.3, S4.1, S4.2, S4.3, S4.3)
TYPE OF MEASURE	Legislative/Administrative regulations Economic measures Education/information measures Non-structural interventions Acquisition, completion and improvement of information Environmental measures (green) infrastructure) Technical Flood Protection Measures
MEASURE DESCRIPTION	Includes a detailed description of the measure
AUTHORITIES RESPONSIBLE FOR IMPLEMENTATION	Reference to the Competent Authority responsible for the implementation, application and coordination of the proposed measure at national, regional, local level as well as to the other authorities involved in its implementation
IMPLEMENTATION AREA	Water District, APSFR, River Basin, Water System etc.
IMPLEMENTATION MONITORING INDICATORS	Varies depending on the measure
TARGET PRICE	Varies depending on the measure

DELIVERABLE 19 Translation into English of the summary reports of the methodologies and results of the Deliverables studies

AREA OF IMPACT OF THE MEASURE	Water District, APSFR, River Basin, Water System etc.
IMPACT MONITORING INDICATORS	Varies depending on the measure
TARGET PRICE	Varies depending on the measure
CLIMATE CHANGE RESILIENCE¹	How the measure performs under climate change. The performance is assessed as Critical, High, Medium, Low.
LINKAGE WITH CLIMATE CHANGE GOALS AND MEASURES	Relevance of the Measure with the objectives and actions of the National Strategy for Adaptation to Climate Change (ESPKA 2016), the PESPKA AMTH (2023), the Climate Law and the EU Specifications.
RELATIONSHIP WITH RBMP GOALS AND MEASURES	Commentary on the synergy of the measure with the objectives and measures of the RBMP
IMPLEMENTATION STAGE	<ul style="list-style-type: none"> • Mature • No competition is being held • To be implemented • In a tender or contract award procedure • Implemented
IMPLEMENTATION DURATION	<p>Short term: 0-2 years</p> <p>Medium term: 2-6 years,</p> <p>Long term: > 6 years</p>
PROPOSED IMPLEMENTATION TIMETABLE (MILESTONES)	<ul style="list-style-type: none"> • Project Maturation • No tender procedure is being conducted • Pending implementation • In tendering or contract award process • Implementation
PRIORITY RANKING	Priority ranking of the measure based on the results of its cost-effectiveness assessment
ESTIMATED COST	cost estimate of the measure
INDICATIVE FINANCIAL PROGRAM	Potential sources of funding for the measure

¹Climate resilience is defined as “The ability of interconnected social, economic and ecological systems to cope with a hazardous event or trend or disturbance, through their response or reorganization in ways that maintain their main function, identity and structure” [INTERIM FRAMEWORK FOR THE ASSESSMENT OF THE CLIMATE RESILIENCE OF INFRASTRUCTURE PROJECTS SUBMITTED FOR CO-FUNDING IN THE NSRF PROGRAMMES 2021 – 2027, National Coordinating Authority, General Secretariat for Public Investments & NSRF, Ministry of Development & Investments, December 2022.

Indicative Documentation of the Necessity of a Measure:

The necessity of adopting and implementing the measure is supported by current developments in flood risk management, as well as by flood risk and climate change assessments conducted within the framework of this FRMP.

10.4 Specialization of measures for the Northern Peloponnese WD EL02

During the 1st revision implementation cycle of the FRMP for the Northern Peloponnese Water District, a significant specialization of the Program of Measures is carried out, providing more detailed proposals for projects and measures at the Water District level or per APSFR. This specialization takes into account not only the requirements of Directive 2007/60 and the General and Specific Objectives of the 1st revision for flood risk reduction, but also other flood prevention plans and studies implemented in the relevant areas.

All 31 measures of the program are briefly mentioned below, some of which are specialized for individual APSFRs and are accompanied by brief descriptions. A detailed description of all 31 measures of the Program of Measures for WD EL02, along with all relevant information, can be found in the corresponding chapter of the FRMP.

EL_02_61_01: Development of a Monitoring System for the Flood Risk Management Plan's Program of Measures

The measure is a continuation of EL_02_61_01 from the 1st FRMP and concerns the development of a database and an interactive platform for collecting and monitoring the required information from all stakeholders involved in the implementation of the Programme of Measures. It also includes the provision of advisory services by specialized personnel. The measure is implemented by the Decentralized Administration of Peloponnese, Northern Greece, and the Ionian Sea, specifically by the Peloponnese Water Directorate.

EL_02_21_01: Alignment of the Urban Development Plans with the provisions of the FRMPs

The measure is introduced for the first time in the 1st revision of the FRMP for EL02 and applies to the entire Northern Peloponnese Water District. It concerns the issuance of a Directive specifying the data that should be drawn from the FRMPs during the Analysis Stage/Diagnosis Unit of the studies urban planning (Local Urban Plans/ Special Urban Plans). This is intended to support the development of well-documented proposals for disaster risk reduction, in accordance with the qualitative guidelines for urban planning set out in the new Urban Planning Standards (Ministry of Environment and Natural Resources/DNEP/32892/1414/2024, D'200).

EL_02_21_02: Building and structural regulations within the 100-year flood zone

The measure is a continuation of EL_02_61_01 from the 1st Flood Risk Management Plan (FRMP) and concerns the formulation of special provisions within the Building and Construction Regulation aimed at reducing the vulnerability of structural works, installations, and constructions located within the

DELIVERABLE 19

**Translation into English of the summary reports of the methodologies and
results of the Deliverables studies**

EL_02_21_02: Building and structural regulations within the 100-year flood zone

100-year flood zone, due to their exposure to flood risk. The goal is to reduce disaster risk. The measure applies to settlements located within the flood zone corresponding to a flood with a return period of $T = 100$ years. Indicatively, certain settlements and cities located within the Areas of Potential Significant Flood Risk (APSFR) of the Northern Peloponnese Water District are mentioned:

- Corinth (EL02APSFR001)
- Sikyonion, Velo-Vocha, Corinth (EL02APSFR006)
- Aigialeia (EL02APSFR007)
- Ilida, Pineios, Andravida-Kyllini, and Patras (EL02APSFR008)
- Kefalonia (EL02APSFR009)

EL_02_21_03: Adaptation of the urban development plans in flood prone areas (retention basins)

The measure is introduced for the first time in the 1st revision of the FRMP for EL02 and applies to the flood-controlled areas that will be defined by the Master Plans (measure EL_02_35_02), which will also specify the necessary flood flow retainment measures for each APSFR, as well as those arising from the implementation of measure EL_02_42_05. The measure concerns the appropriate adaptation of urban plans (Local Urban Plans/ Special Urban Plans) within the flood-prone areas, in order to propose adequate land uses and restrictions.

EL_02_21_04: Actions to prevent and protect Rural Development within the APSFRs

The measure is introduced for the first time in the 1st revision of the FRMP for EL02 and applies to cultivated areas within the Areas of Potential Significant Flood Risk (APSFR). According to the results of the Flood Hazard Maps (FHMs), as well as recent experience with flood events, extensive agricultural holdings within the 100-year flood inundation zone ($T=100$) are located in APSFR EL02APSFR001, EL02APSFR002, EL02APSFR003, EL02APSFR004, EL02APSFR005, EL02APSFR006, EL02APSFR007, EL02APSFR008 and EL02APSFR009 in the Northern Peloponnese Water District.

The measure aims to protect cultivated land and support rural development. It promotes the development of an action plan, which may include:

- a) Identification of crops and areas that are systematically affected by flooding;
- b) Assessment of drainage network deficiencies that contribute to flooding;
- c) Identification of alternative crops that are flood-resistant and provide equivalent agricultural income;
- d) Proposals for financial and other incentives to support crop changes;
- e) Identification of livestock units for potential relocation and related incentives;
- f) Proposals for alternative agricultural practices where crop restructuring or relocation is not feasible;
- g) Economic impact analysis of the proposed actions.

EL_02_23_01: Flood protection measures for the boreholes of the water service providers

The measure is a continuation of EL_02_23_03 from the 1st Flood Risk Management Plan (FRMP) and includes:

(1) The adoption of flood protection measures by the Water Service Providers. More specifically, Water Service Providers shall adopt appropriate flood protection measures for wells located within the 100-year flood zone ($T = 100$). Such measures may include, for example, the elevation of electromechanical systems, piping, and well housing, the construction of protective perimeter embankments of suitable height and materials, and other relevant interventions.

(2) The incorporation of flood protection requirements in water use permits. The Water Directorates shall incorporate a requirement for the adoption of flood protection measures in water use permits, in accordance with Joint Ministerial Decision 146896/27.10.2014 (Government Gazette B' 2878 and B' 3142), "Categories of permits for the use and execution of water development projects. Procedure and conditions for issuing permits, their content and duration of validity, and other relevant provisions," as amended and currently in force.

The adoption of appropriate flood protection measures will mitigate the risks associated with hydraulic wells, including damage to above-ground electromechanical equipment and the potential inflow of floodwaters into the underground aquifer.

This measure is mandatory for all existing boreholes located within the 100-year flood zone in APSFRs EL02APSFR003, EL02APSFR005, EL02APSFR006, and EL02APSFR008. Based on the data of the current Flood Risk Management Plan (FRMP), the measure requires immediate implementation for the following boreholes:

- 1 borehole located near APSFR EL02APSFR003, belonging to the Municipality of Zakynthos
- 1 borehole located near APSFR EL02APSFR005, belonging to the Municipality of Sikyonion
- 6 boreholes located either within or near APSFR EL02APSFR006
- 26 boreholes located either within or near APSFR EL02APSFR008

EL_02_24_01: Restructuring and modernization of the meteorological and hydrometric data collection network

The measure is a continuation of EL_02_24_04 from the 1st FRMP, applies to the entire Water District, and concerns the upgrade and modernization of the existing analog network of hydrometeorological stations operated by the Ministry of Environment and Natural Resources. The implementation of the measure includes, indicatively, the following actions:

- a) Replacement of analog hydrometeorological stations with digital telemetric stations across the country, along with the expansion of the network where necessary
- b) Development of a digital platform for the recording and transmission of hydrometric and meteorological data.

DELIVERABLE 19

**Translation into English of the summary reports of the methodologies and
results of the Deliverables studies**

EL_02_24_01: Restructuring and modernization of the meteorological and hydrometric data collection network

The measure will be implemented in cooperation with the Water Directorates of the respective Decentralized Administrations.

In the Northern Peloponnese Water District (EL02), there are currently 45 rain gauges operated by the Ministry of Environment and Natural Resources, which will be verified and evaluated as part of this measure.

EL_02_24_02: Collection and digitization of data regarding stream delineation and flood control structures

The measure is a continuation of EL_02_24_04 from the 1st FRMP. It applies across the entire Water District, with priority given to catchment areas affecting the APSFRs. The measure concerns the creation and maintenance of a database through the collection and digitization of information at the APSFR level, specifically regarding:

- Data on existing and new stream delineation projects and as well as other relevant information for the implementation of such projects
- Already delineated watercourses
- Technical data of flood control projects that influence water flow, including site inspection of existing projects implemented under the FRMPs or other studies, along with additional technical information from studies and archives of other competent authorities.

EL_02_24_03: Creation of a national Flood Events database and development of related interactive online platform

The measure is a continuation of EL_02_24_07 from the 1st FRMP and is applicable to the entire Water District. It concerns the design and development of a National Flood Event database, along with an associated interactive online platform, through the establishment of an appropriate spatial data system.

The registry will include, at a minimum, records of flood events and related data collected from competent authorities and involved organizations, in accordance with the General Plan for Emergency Response and Immediate/Short-Term Management of Flood Consequences, "DARDANOS", as applicable at the time and based on guidelines to be issued by the competent service of the Ministry of Infrastructure and Transport.

The objective is to ensure the availability and uniform use of structured data to support damage and impact assessments related to extreme flood events. This will facilitate better coordination among stakeholders and enhance the development and implementation of flood risk management plans.

DELIVERABLE 19

**Translation into English of the summary reports of the methodologies and
results of the Deliverables studies**

EL_02_31_01: Implementation of water control measures in upland regions

The measure is an amendment to EL_02_31_08 from the 1st FRMP and concerns natural water retention projects in upland areas. It includes the construction of:

- a) Bioengineering, geotechnical, and hydraulic works (e.g., low dams and flow-parallel structures) aimed at reducing erosion, limiting sediment production, and enhancing water retention in mountain regions;
- b) Open-type dam structures and sediment retention basins in mountainous watersheds with intense torrential flow
- c) Dry retention basins for flood retainment in mountain catchments with milder torrential flow.

The measure primarily applies to mountainous catchments characterized by high erodibility that discharge into the APSFRs EL02APSFR002, EL02APSFR003, EL02APSFR004, EL02APSFR005, EL02APSFR006, EL02APSFR007, EL02APSFR008 and EL02APSFR009—areas identified as high flood risk according to the FRMs. Indicatively, these include:

- the high-altitude zone of the Asopos River (EL02APSFR002)
- the mountainous catchments of Lake Feneos, which discharge into APSFR EL02APSFR005, and
- the mountainous catchments of Kefalonia and Zakynthos, which discharge into APSFRs EL02APSFR009 and EL02APSFR003, respectively

EL_02_31_02: Nature-based water retention structures in the lowlands

The measure is introduced for the first time in the 1st revision of the FRMP for EL02 and concerns natural water retention projects at the boundaries of lowland riverbeds. Priority is given to areas within the 100-year flood zones of the APSFRs or upstream locations that present high flood risk, particularly where highly vulnerable uses are found.

The measure includes the implementation of:

- Floodplain restoration and management projects (N03)
- Restoration of watercourse beds to their natural state (N05)
- Meander reformation (N04)
- Construction of dry (offline dry detention basins) and active (online ponds) retention basins and lakes (N01)
- Wetland restoration and management through riparian vegetation (N02)
- Restoration and reconnection of seasonal streams (N06)
- Natural bank stabilization (N10).

It also includes the removal of unauthorized transverse structures within riverbeds, as well as the removal of abandoned or damaged structures located within the flood zones.

DELIVERABLE 19

**Translation into English of the summary reports of the methodologies and
results of the Deliverables studies**

EL_02_31_02: Nature-based water retention structures in the lowlands

The measure applies to APSFRs EL02APSFR003, EL02APSFR006, EL02APSFR007, EL02APSFR008 and EL02APSFR009 of the Water District EL02, specifically in lowland areas within the 100-year flood extent as defined in the FHMs of this revision. It may also apply to upstream locations, provided that studies demonstrate effective flood flow interception and risk reduction.

Indicative areas where the implementation of Natural Water Retention Measures (NWRM) is proposed include:

- riparian areas of the Agios Charalambos Stream in Zakynthos (EL02APSFR003),
- the Asopos River (EL02APSFR006),
- the Selinous and Vouraikos Rivers (EL02APSFR007),
- the Pineios River (EL02APSFR008), and
- the Lixouri Stream (EL02APSFR009).

The final locations for implementation will be determined through the Master Plans developed under Measure EL_02_35_02.

EL_02_31_03: Implementation of natural water retention measures Natural Water Retention Measures (NWRM) / SUDs practices for projects and activities of subcategory A1 and A2 of Law 4014/2011, as in force.

The measure was introduced for the first time in the 1st Revision of the FRMP EL02 and is applied to the APSFRs of the Northern Peloponnese Water District.

The measure concerns the planning of projects and activities of subcategory A1 and A2 according to Law 4014/2011, as in force, where the implementation of Natural Water Retention measures (NWRM) / SUDs practices should be considered as a priority, when flood control projects are required, to limit surface runoff and contain flood runoff.

EL_02_32_01: Multipurpose reservoirs with a flood protection component

The measure is an amendment to EL_02_32_09 from the 1st FRMP and concerns the obligation to construct new dams with a flood protection component, which requires additional storage volume and an appropriate reservoir operation program. The measure applies to the new significant regional reservoirs / dams / pumped storage projects provided by the 2nd Revision of the RBMP of the Northern Peloponnese Water District and falling under the APSFR EL02APSFR006. Specifically, in APSFR EL02APSFR006 (Low Zone of streams in Northern Peloponnese from Corinth to Melissi), the implementation of the measure is proposed at the Asopos Dam.

EL_02_32_02: Utilization of existing reservoir projects to intercept flood flows

The measure constitutes an amendment to EL_02_32_10 from the 1st FRMP and includes actions to optimize the management of existing reservoirs so that, on the one hand, they cover in the best possible way the needs of the uses they serve, and on the other hand, they offer the maximum possible flood protection downstream.

In this case, for the EL02 reservoir, the measure applies to the Doxa Dam, upstream of APSFR EL02APSFR005, as well as to the Pineios, Valmantoura, and Asteri dams within APSFR EL02APSFR008.

EL_02_33_01: Modernization and rehabilitation of drainage networks

The measure is an amendment to EL_02_33_11 from the 1st FRMP and includes actions for the evaluation, adequacy assessment, cleaning, maintenance, replacement, and modernization of drainage networks. The measure is proposed for priority implementation in the Regional Units of Corinthia, Achaia, and Ilia (APSFRs EL02APSFR006, EL02APSFR007, and EL02APSFR008). Indicatively, but not exhaustively, the following drainage networks are mentioned:

Region of Corinthia (EL02APSFR006)

- Stymphalia irrigation network
- Nemea irrigation network
- Feneos irrigation network
- Asopos Dam project in Corinthia and its accompanying works (irrigation works of the Asopos Dam)

Region of Achaia (EL02APSFR007)

- Marmara irrigation network
- Selinountas irrigation network

Region of Ilia (EL02APSFR008)

- Pineios – Alfeios irrigation network
- Amaliada – Roviata irrigation network
- Gastouni irrigation network
- Myrtountia irrigation network
- Savalia irrigation network

Region of Achaia (EL02APSFR008)

- Chalandritsa irrigation network
- Isoma irrigation network
- Saravali irrigation network

EL_02_33_02: Flood Protection Measures

The measure is an amendment to EL_02_33_12 from the 1st FRMP. It includes the construction of new flood control projects and/or the completion or reinforcement of existing flood protection works that are currently under study or have already been studied and are planned for implementation in lowland riverbeds. Priority is given to areas located within the 100-year flood zones of the APSFRs, particularly in locations identified as high flood risk and characterized by highly vulnerable land uses. The types of interventions include riverbed arrangements, terraces, embankments, culverts, artificial channels, and the removal of sediment deposits.

The measure is proposed for application to watercourses located within APSFR EL02APSFR003, EL02APSFR006, EL02APSFR007, EL02APSFR008 and EL02APSFR009, with priority given to those within the T=100-year flood inundation zones classified as high or very high risk.

Accordingly, and by way of example (not limitation), the following watercourses are identified:

- Zakynthos (Agios Charalambis stream), Laganas* (EL02APSFR003)
- Potamia stream, Seliandros stream, Elisson stream, Asopos river, Zapantis stream, Raizani stream (EL02APSFR006)
- Vouraikos river, Selinous river, Phoinikas river, Meganeitas stream, Kerynitis stream, Krios river, Krathis river (EL02APSFR007)
- Iardanos stream, Latifi stream, Gourlesas stream, Pineios river, Anisatos stream, Gouvos stream, Kapeletaiiko stream, Vergas stream, Rouskoulas stream, Manna stream, Peiros river, Kourichali stream, Glafkos river, Diakoniaris stream, Vountenis stream, Volinaios stream (EL02APSFR008)
- Lixouri* (EL02APSFR009)

In addition, indicatively and not exhaustively, a relevant list of projects is provided in APSFR EL02APSFR003, EL02APSFR006, EL02APSFR007, EL02APSFR008 and EL02APSFR009 which:

(A) is already in development or has secured construction financing

1. Flood protection works for the regulation of the Tsiroyiannis stream on Zakynthos island (EL02APSFR003)
2. Flood defense structures in the Sarakinado area of Zakynthos (EL02APSFR003)
3. Flood defense structures within the Region of of Zakynthos (EL02APSFR003)
4. Maintenance and restoration of existing flood protection works under the jurisdiction of the Regional Unit of Achaia (code: 2022NP20100010) – *Subproject 18: Maintenance and restoration works of existing flood protection infrastructure of the Tholopotamos river and its branches or adjacent streams in the Regional Unit of Achaia* (EL02APSFR008)
5. Maintenance and restoration of existing flood protection works of the Region of Achaia (code: 2022NP20100025) – *Subproject 1: Maintenance and restoration of flood protection works*

EL_02_33_02: Flood Protection Measures

under the jurisdiction of the Regional Unit of Achaia; Subproject 2: Emergency supplementary works for the maintenance and restoration of existing damages (EL02APSFR008)

6. Construction of flood protection works along the Patras–Pyrgos motorway (culverts, bridges, river channel regulation, etc.) (EL02APSFR008)
7. Flood protection of the Lechaina community (EL02APSFR008)
8. Flood protection of the eastern entrance of Varda from the National Road (EL02APSFR008)

(B) are found in other stages of maturation

1. Proposed flood protection projects from the Zakynthos MasterPlan (including delineation studies, flood protection works, stormwater drainage, etc.) (EL02APSFR003)
2. Regulation and delineation of the Zapantis stream (Vrachati area, Corinthia), from the Olympia Odos motorway to its outfall, approximately 4.5 km in length (EL02APSFR006)
3. Regulation and delineation of the Raizani stream (Assos area, Corinthia), from the Olympia Odos motorway to its outfall, approximately 4.5 km in length (EL02APSFR006)
4. Regulation and delineation of the Elisson stream (Kiato area), from the Olympia Odos motorway to its outfall, approximately 4.5 km in length (EL02APSFR006)
5. Flood protection works along the Selinountas River, approximately 10 km upstream from its mouth (EL02APSFR007)
6. Study for delineation and flood protection works in watercourses of the Erymanthos and Kalavryta areas (EL02APSFR007)
7. Study for delineation and flood protection works in watercourses of the Aigialeia area (EL02APSFR007)
8. Study of supplementary works for the Pinios dam, including renovation, accessibility, safety, and enhancement, along with studies for water storage projects for irrigation and water supply in the Municipality of Oleni, Region of Ilia (EL02APSFR008)
9. Study for delineation and flood protection works in watercourses in the Patras area (EL02APSFR008)
10. Preparation of a Master Plan for stormwater management and flood protection works in Patras
11. Study for delineation and flood protection works in watercourses of the Western Achaia area (EL02APSFR008)

It is noted that this measure is being implemented due to the inadequate implementation of Measure EL_02_31_02 of this FRMP, which concerns natural water retention projects in the lowlands. The required flood protection projects will be identified within the framework of the Master Plan implementation (see Measure EL_02_35_02), following an assessment of the impact on flood risk reduction of the upstream hydrological measures (Measure EL_02_31_01), the construction and

EL_02_33_02: Flood Protection Measures

utilization of regional reservoirs (Measures EL_02_32_01 and EL_02_32_02), and in conjunction with the implementation a study for the designation of flood-controlled areas (Measure EL_02_42_05).

EL_02_34_01: Modernization, replacement and maintenance of existing stormwater drainage networks

The measure is an amendment to EL_02_34_13 from the 1st FRMP. It includes projects for the replacement, reinforcement, and completion of stormwater drainage systems. Priority is given to areas with significant residential development and needs, located within the APSFRs.

Specifically, for the Northern Peloponnese Water District, the measure is proposed for implementation in selected urban centers within APSFR EL02APSFR001, EL02APSFR003, EL02APSFR006, EL02APSFR007, EL02APSFR008 και EL02APSFR009. Indicatively, and not restrictively, the following urban centers are proposed:

- Corinth (EL02APSFR001)
- Zakynthos (EL02APSFR003)
- Corinth, Kiato, Zevgoliato, Velo, Paralia (EL02APSFR006)
- Diakopto, Aigio (EL02APSFR007)
- Patras, Paralia, Lechaina, Andravida, Vartholomio, Gastouni, and Amaliada (EL02APSFR008)

EL_02_35_02: Integrated Design of flood protection measures (Master Plan) and construction of the proposed measures

The measure is a continuation of EL_02_35_15 from the 1st FRMP. Specifically, for the implementation of the Master Plan for flood protection projects in the Northern Peloponnese Water District, it is proposed to develop:

- 1 Master Plan covering part of the Northern Peloponnese Water District that belongs to the Region of Ionian Islands, including the APSFR EL02APSFR009 and its upstream catchments.
- 1 Master Plan covering part of the Northern Peloponnese Water District that belongs to the Region of Western Greece, including the APSFR EL02APSFR007 and EL02APSFR008 as well as their upstream catchments.
- 2 Master Plans covering part of the Northern Peloponnese Water District that belongs to the Region of Peloponnese, including the APSFRs EL02APSFR001, EL02APSFR002, EL02APSFR004, EL02APSFR005, and EL02APSFR006 as well as their upstream catchments.

The aforementioned Masterplans exclude areas where such Plans have already been implemented, such as the island of Zakynthos (FRMZ EL02APSFR003) and the catchment area of Pylaros in Kefalonia, as well as watercourses in the APSFRs for which projects are proposed and included in lists (A) and (B) of Measure EL_02_33_02.

EL_02_35_03: Evaluation and maintenance of existing water control measures in upland regions

The measure is a continuation of EL_02_35_16 from the 1st FRMP. It involves the assessment of existing mountain hydrological works in stream and tributary catchment areas, as well as their maintenance, in order to mitigate impacts in areas included within the 100-year flood zones (T=100). Indicatively, and not restrictively, the following mountainous catchments—discharging into T=100 flood zones as defined in the FRMs—are identified as priorities for maintenance interventions:

- (1) mountainous catchments of streams in the area of Loutra Oraias Elenis that drain APSFR EL02APSFR001
- (2) mountainous catchments of Zakynthos that drain into APSFR EL02APSFR003
- (3) mountainous catchments of Lake Stymphalia and the Alea basin that drain into APSFR EL02APSFR004
- (4) mountainous catchments of Lake Feneos that drain into APSFR EL02APSFR005
- (5) mountainous catchments of streams along the northern Peloponnesian coast from Kiato to Corinth that drain into APSFR EL02APSFR006
- (6) mountainous catchments of the Selinountas River that drain into APSFR EL02APSFR007
- (7) mountainous catchments of the rivers Peiros – Vergas – Pineios – Glafkos that drain into APSFR EL02APSFR008
- (8) mountainous catchments of Kefalonia that drain into APSFR EL02APSFR009

EL_02_35_04: Land use management

The measure is a continuation of EL_02_35_17 from the 1st FRMP. It concerns the preparation and implementation of pasture management plans, in accordance with the provisions of Law 4351/2015 (A' 164) and Joint Ministerial Decision 1058/71977/2017 (Government Gazette B 2331/07-07-2017). In areas located upstream of the APSFRs that have not been excluded from grazing use, the provisions of the FRMP and the RBMP should be taken into account. Additionally, hydrological criteria should be applied in determining grazing intensity.

The measure is applied across the Water District, with priority given to catchments that discharge into the APSFRs. Immediate implementation of the measure is particularly important for controlling grazing pressure and preventing deforestation in the mountainous river catchments. Specific watercourses whose catchments are proposed for the application of the measure are indicated:

- Fournias Stream in APSFR EL02APSFR001
- Upper course of the Asopos River in APSFR EL02APSFR002
- Lagana and Zakynthos Streams (Agios Charalambos Stream) in APSFR EL02APSFR003

EL_02_35_04: Land use management

- Catchments of the upper course of the Asopos River in APSFR EL02APSFR004
- Closed basin of the artificial lake Feneos in APSFR EL02APSFR005
- Catchments of the streams: Potamia, Raizani, Zapantis, Asopos River, Elisson, and Selianthros in APSFR EL02APSFR006
- Catchments of the streams: Krios River, Krathis River, Vouraikos River, Kerynitis River, Selinountas River, Meganitas Stream, and Finikas River in APSFR EL02APSFR007
- Catchments of the streams: Iardanos Stream, Latifi Stream, Moundroumi Stream, Gourlessas Stream, Pineios River, Anisatos Stream, Melissos Stream, Manna Stream, Peiros River, Glafkos River, etc. in APSFR EL02APSFR008
- Catchments of the streams: Lixouri Stream, Koutavos Stream, Drapanon Stream, Petali Stream, and Agia Efimia Stream in APSFR EL02APSFR009

EL_02_35_05: Maintenance and rehabilitation of existing flood protection structures

The measure is introduced for the first time in the 1st revision of the FRMPs for EL02. It is applied at the Water District level and concerns all existing flood protection infrastructures located within watercourses affecting their regime. Priority is given to maintenance and restoration projects within the APSFRs or upstream of those that affect flood flows.

The measure includes the following actions that should be carried out on an annual basis:

1. Conducting site visits, noting problems after the end of the wet period
2. Identification of critical positions that need maintenance/ replacement and prioritization
3. Setting an annual maintenance program by the competent authorities which will include:
 - ✓ Cleaning from debris materials hindering the free flow
 - ✓ Slope supporting works
 - ✓ Repair of lining works
 - ✓ Embankment repairs
 - ✓ Repairs of the structures (steps, culverts, crossings, etc.)
4. Secure funding
5. Implementation

DELIVERABLE 19

**Translation into English of the summary reports of the methodologies and
results of the Deliverables studies**

EL_02_41_01: Development and operation of an early warning system for floods

The measure is a continuation of EL_02_41_18 from the 1st FRMP. The development of an early warning system for the Northern Peloponnese Water District is proposed for all APSFRs. Indicatively and not restrictively, the following areas are proposed:

- The entire course of the Asopos River (RBD EL0227 – Streams of the Northern Peloponnese Coast, APSFRs EL02APSFR004, EL02APSFR002, and EL02APSFR006)
- The entire course of the Pineios and Peiros Rivers (RBD EL0228 – Peiros–Verga–Pineios, APSFR EL02APSFR008)

EL_02_42_01: Updating of Emergency Plans, and standardization of emergency flood response procedures/ Development of a local Action Plan Memorandum

The measure is a continuation of EL_02_42_19 from the 1st FRMP and is applied at the Water District level. The FHMs and FRMs prepared within the framework of this FRMP, contribute to improved knowledge of flood risk and should be taken into account in the Emergency Plans that will be developed. For the River Basin District of Northern Peloponnese (EL02), within the boundaries of the 100-year floodplain (T100), the following municipalities are indicatively mentioned: Tripoli, Nemea, Ilida, Pineios, Ancient Olympia, Velo-Vocha, Sikyonion, Xylokastro-Evrostini, Kalavryta, Erymanthos, West Achaia, Aigialeia, Patras, Zakynthos, Kefalonia, Andravida-Kyllini, Pyrgos, and Corinth.

In accordance with the provisions of the General Civil Protection Plan "Xenokrates," in 2019, the Directorate of Planning and Emergency Response of the General Civil Protection Agency, in collaboration with all involved authorities, issued the General Plan for Emergency Response and Immediate/Short-Term Management of the Consequences of the Flood Phenomenon. This plan was distributed to all relevant entities by document number 8794/06-12-2019 from the General Civil Protection Agency for implementation of their respective responsibilities ("DARDANOS 1"). In 2023, the Emergency Planning Department of the General Directorate of the Hellenic Republic, considering administrative and organizational changes since the first edition—primarily affecting central administration authorities—issued the 2nd General Plan for Emergency Response and Immediate/Short-Term Management of the Consequences of the Flood Phenomenon, named "DARDANOS 2."

EL_02_42_03: Identification of borrow pit locations for embankment restoration/maintenance in case of emergency

The measure is a continuation of EL_02_53_27 from the 1st FRMP and applies to the APSFR EL02APSFR003, EL02APSFR006, EL02APSFR007 and EL02APSFR008, where, according to the FHMs, overflows of existing embankments and flooding of the adjacent lowland areas occur. In the T=1000-year flood zone, where embankments have been constructed or are planned, the following actions are undertaken:

1. Administrative actions: the administrative actions through which:

EL_02_42_03: Identification of borrow pit locations for embankment restoration/maintenance in case of emergency

- a) permission to immediately take the required embankment restoration materials from specific predetermined locations (borrowing chambers), after an extreme flood event,
- b) selection criteria for these positions are determined,
- c) these positions are delineated,
- d) the permitted uses are determined in the selected and delineated locations

2. Other actions required for the finalization and licensing of positions:

- a) A study for the identification and delineation of borrow pits for the immediate extraction of materials to restore or construct embankments. The study shall include: identification of suitable locations for borrow pits, determination of the maximum allowable extraction volumes, geotechnical testing of material suitability, provision of typical embankment cross-sections (pre-flood condition) for immediate restoration, methodology for material extraction and environmental restoration measures for the borrow pit area, accessibility analysis and proposal of access roads suitable under T=50, T=100, and T=1000 flood scenarios.
- b) Environmental Impact Assessment (EIA) and compliance with the licensing procedure in accordance with applicable legislation. The activity falls under Group 5 "Mining and Related Activities," as defined by the relevant Joint Ministerial Decision (as amended and in force), specifically subcategory 5: "Borrow pits for aggregates, soil, or other earth materials used exclusively for infrastructure projects."

Indicatively and not exhaustively, the following are mentioned:

- APSFR EL02APSFR003, flood protection levees have been constructed along watercourses in this APSFR, such as the channelization works of the Agios Charalambos stream (Zakynthos).
- APSFR EL02APSFR006, flood protection levees have been constructed along watercourses in the area, including the channelization works of the Elisson stream, the Zapantis stream, and the Potamias stream (Xirias of Corinthia).
- APSFR EL02APSFR007, flood protection levees have been constructed along watercourses, such as the channelization works of the Selinous stream and the Krios river.
- APSFR EL02APSFR008, flood protection levees have been constructed along watercourses in the area. Indicatively (and not exhaustively), these include the Pineios dam, the levees of the Verga river from the Pyrgos-Patras National Road downstream, and the channelization works of the Gouvos stream, Iardanos river, Melissos stream, among others.

EL_02_42_04: Establishment of alert thresholds for critical watercourses of WD EL02 based on the provisions of laws 4662/2020 and 5075/2023

The measure is introduced for the first time in the 1st revision of the FRMPs for EL02. It includes the following actions, with the objective of defining alert thresholds corresponding to the four levels of mobilization established by the applicable legislation:

- Hydraulic assessment of watercourses and determination of their discharge capacity (i.e., the maximum flow they can safely convey, including the required freeboard according to technical specifications).
- Identification of critical points along watercourses suitable for monitoring and recording river flow (e.g., at bridges, access points, or straight channel segments ideal for hydrometric measurements).
- Mapping of critical locations in relation to the development of the flood wave and the proximity of vulnerable receptors — primarily residential settlements and transport infrastructure.
- Establishment of flow and water level thresholds at the above locations for each of the four (4) preparedness levels defined by the legal framework.
- Determination of absolute elevations (levels) and associated flows at selected key locations, corresponding to all four alert levels.

Implementation of this measure is considered essential in critical watercourses, specifically those categorized as high and very high risk. Therefore, the following locations are identified indicatively and not exhaustively:

- in APSFR EL02APSFR003, the following critical watercourses are identified: Zakynthos (Agios Charalambos stream) and Laganas.
- in APSFR EL02APSFR006, the following watercourses are identified: Potamia stream, Selianthros stream, Elisson stream, Asopos river, Zapantis stream, and Raizani stream.
- in APSFR EL02APSFR007, within the Water District of Northern Peloponnese (EL02), the following watercourses are identified: Vouraikos river, Selinous river, Phoinikas river, Meganeitas stream, Kerynitis river, Krios river, and Krathis river.
- in APSFR EL02APSFR008, within the Water District of Northern Peloponnese (EL02), the following watercourses are identified: Iardanos stream, Latifi stream, Gourlesas stream, Pineios river, Anisatos stream, Gouvos stream, Kapeletaiiko stream, Vergas stream, Rouskoulas stream, Manna stream, Peiros river, Kourichali stream, Glafkos river, Diakoniaris stream, Vountenis channel, and Volinaios stream.

DELIVERABLE 19

**Translation into English of the summary reports of the methodologies and
results of the Deliverables studies**

EL_02_42_05: Plan for controlled flooding of lowland areas to protect settlements and critical infrastructure

The measure is introduced for the first time in the 1st Revision of the FRMPs for EL02. It concerns the planning of controlled flooding in low- or very low-risk low-lying areas, which will be selected as a priority within or upstream of the T100 flood zones, with the aim of protecting areas within the T100 zones or reducing flood risk in regions identified as high-risk in the Flood Risk Management Plans (FRMPs).

The implementation of this measure will be pursued within the framework of the Master Plan for flood control projects (Measure EL_02_35_02). Upon completion, a special study will establish the institutional framework for these controlled flood areas, including the definition of permitted land uses and prohibitions within their boundaries, in accordance with Measure EL_02_21_03.

This measure is to be examined in detail during the preparation of the Master Plans in line with Measure EL_02_35_02. Indicatively and not restrictively, the following watercourses are proposed for investigation, as they are subject to extensive flooding even under T50-year flood events, according to the Flood Hazard Maps (FHM):

- APSFR EL02APSFR001: Fournia stream
- APSFR EL02APSFR003: Agios Charalambos stream, Lagana stream
- APSFR EL02APSFR004 & EL02APSFR006: Asopos river
- APSFR EL02APSFR007: Selinous river, Vouraikos river
- APSFR EL02APSFR008: Pineios river, Moudroumi stream, Gouvos stream, Vergas stream

EL_02_43_01: Awareness-raising actions for the public, local authorities and communities against flood risk

The measure is a continuation of EL_02_43_21 from the 1st FRMP and is implemented at the Water District level. It includes the implementation of information and awareness-raising actions targeting both citizens and institutions regarding flood risks in their area, as well as precautionary measures to be taken in case of potential flood events. Such actions may include television, radio, and internet campaigns, public events, educational workshops, presentations in schools, etc. These activities will be carried out by the Ministry of Climate Crisis and Civil Protection, the Ministry of Education, the Ministry of National Economy, the Civil Protection Directorates of the relevant Decentralized Administrations, the Autonomous Civil Protection Directorates of the relevant Regions, and the Municipalities, in cooperation with school administration authorities.

EL_02_43_02: Warning system to avoid crossing Irish crossings during flood events

The measure is a continuation of EL_02_43_22 from the 1st FRMP and is applied at the APSFR level, with priority given to areas where a significant number of Irish crossings present a very high risk to residents under high-flow conditions. The objective of the measure is to enhance the preparedness of

EL_02_43_02: Warning system to avoid crossing Irish crossings during flood events

both citizens and responsible authorities, with the aim of reducing accidents involving vehicle crossings over rivers and streams via Irish crossings during flood events.

To achieve this, the measure involves the installation of systems consisting, at a minimum, of warning signage and water depth indicators at Irish crossings within the Water District. These systems will provide clear and timely information to discourage vehicle crossings under hazardous conditions.

The total number of Irish crossings identified per APSFR within the Northern Peloponnese Water District is as follows:

- APSFR EL02APSFR001: total of 1 Irish crossing
- APSFR EL02APSFR002: total of 1 Irish crossing
- APSFR EL02APSFR003: total of 5 Irish crossings
- APSFR EL02APSFR006: total of 38 Irish crossings
- APSFR EL02APSFR007: total of 12 Irish crossings
- APSFR EL02APSFR008: total of 50 Irish crossings
- APSFR EL02APSFR009: total of 6 Irish crossings

EL_02_44_01: Formulation of a regulatory framework for restoring the conveyance capacity of streambeds and for the maintenance and management of riparian vegetation

The measure is a continuation of EL_02_44_23 from the 1st FRMP and is implemented at the level of the Water District. It involves the development of regulations for the periodic cleaning of watercourses, as well as the maintenance and management of riparian vegetation. These regulations are to be formulated considering the specific characteristics of the watercourses, including geomorphological and hydraulic conditions, type of watercourse, ecological and environmental attributes and the protection status of the area in which the watercourse is located.

EL_02_51_01: Restoration of infrastructure following recent flooding events

The measure is introduced for the first time in the 1st revision of the FRMPs for EL02 and concerns the restoration of areas affected by severe flooding.

Regarding the required interventions in flood defense embankments, they should be implemented following a thorough evaluation and in coordination with Measure EL_02_35_02 (Master Plan), within which the following aspects are examined:

(a) The impact on flood risk reduction in the lowlands, considering the effectiveness of mountain hydrology projects (Measure EL_02_31_01), the utilization of existing regional reservoirs (Measure EL_02_32_02), and the construction of new regional reservoirs (Measure EL_02_32_01) with flood protection components.

(b) The need to implement natural water retention measures in the lowlands (Measure EL_02_31_02), and controlled flooding in low-vulnerability floodplain areas (Measure EL_02_42_05)

DELIVERABLE 19

Translation into English of the summary reports of the methodologies and
results of the Deliverables studies

EL_02_51_01: Restoration of infrastructure following recent flooding events

(c) The necessity for other flood protection works (Measure EL_02_33_02), which will also define the required restoration interventions for existing embankments.

EL_02_52_01: Identification of locations for (temporary or permanent) sediment deposition sites (sediment storage areas)

The measure is introduced for the first time in the 1st revision of the FRMP for EL02 and concerns the establishment of the procedure through which the optimal management for transported (sediment and debris) materials will be selected following each flood event. The measure applies to all APSFRs within the Northern Peloponnese Water District, where:

- In APSFR EL02APSFR001 of Water District EL02, 1 study will be carried out to determine the location of a sediment deposition basin, within the Region of Peloponnese.
- In APSFR EL02APSFR002 of Water District EL02, 1 study will be carried out to determine the location of a sediment deposition basin, within the Region of Peloponnese.
- In APSFR EL02APSFR003 of Water District EL02, 1 study will be carried out to determine the location of a sediment deposition basin, within the Region of Ionian Islands.
- In APSFR EL02APSFR004 of Water District EL02, 1 study will be carried out to determine the location of a sediment deposition basin, within the Region of Peloponnese.
- In APSFR EL02APSFR005 of Water District EL02, 1 study will be carried out to determine the location of a sediment deposition basin, within the Region of Peloponnese.
- In APSFR EL02APSFR006 of Water District EL02, 1 study will be carried out to determine the location of a sediment deposition basin, within the Region of Peloponnese.
- In APSFR EL02APSFR007 of Water District EL02, 1 study will be carried out to determine the location of a sediment deposition basin, within the Region of Western Greece.
- In APSFR EL02APSFR008 of Water District EL02, 1 study will be carried out to determine the location of a sediment deposition basin, within the Region of Western Greece.
- In APSFR EL02APSFR009 of Water District EL02, 1 study will be carried out to determine the location of a sediment deposition basin, within the Region of Ionian Islands.

11 Prioritization of measures of the 1st revision of the FRMPs WD EL02

Prioritization of the measures is carried out through the assessment of their economic effectiveness. The purpose of prioritization is to highlight the measures that achieve the greatest reduction in flood damage (benefit) at the lowest cost.

The methodology applied in the current cycle of FRMP's is a modification of the methodology applied in the 1st cycle of implementation of the Floods Directive. The adopted steps are as follows:

- Classification of the proposed measures into two categories: measures that contribute indirectly to damage prevention (Category 1) and measures that contribute directly to damage prevention/management (Category 2)
- Assessment of the expected benefit of each measure of the two categories
- Evaluation of the nature/aspect of each measure (prevention, protection, preparedness, recovery)
- Correlation with other policies (climate change, RBMP)
- Multi-criteria analysis of the overall benefit index of the measure
- Estimate of the total cost of each measure (investment cost, operating cost)
- Calculation of cost-effectiveness index of a measure and prioritization of measures

Particular emphasis is placed on flood risk protection, which is why the proposed measures primarily focus on this aspect. The total initial investment cost of the program of measures is estimated at ~557 million €. Measures under the flood protection aspect represent the largest share of the total cost, ~541 million €. The remaining €16 million concerns the remaining three aspects (prevention, preparedness and recovery.)

Table 11-1: Number of measures per action pillar and total cost on the Northern Peloponnese Water District

Measure pillar	Number of proposed measures for EL02	Total initial investment cost of measures €
Prevention	9	2.821.385
Protection	12	540.810.000
Preparedness	8	12.430.000
Recovery	2	990.000
Total	31	557.051.385

The following tables present:

- the Benefit Index (D11)
- the total annualized investment cost (D16) and

The measures in the above-mentioned tables are presented with the score in descending order after applying the prioritization methodology. The measures in these tables are divided by category (Category 1 Measures and Category 2 Measures) according to the same methodology.

DELIVERABLE 19

**Translation into English of the summary reports of the methodologies and
results of the Deliverables studies**

More specifically, the Benefit Index (D11) - Table 11-2 ranges between 0 (smallest benefit from the implementation of the measure) to 100 (greatest benefit from the implementation of the measure). In the Northern Peloponnese Water District, the measures with the greatest benefit (>90) of Category 1 are:

- Development of a Monitoring System for the Flood Risk Management Plan's Program of Measures (EL_02_61_01)
- Actions to prevent and protect Rural Development within the APSFR (EL_02_21_04)
- Flood protection measures for the boreholes of the water service providers (EL_02_23_01)
- Restructuring and modernization of the meteorological and hydrometric data collection network (EL_02_24_01)
- Integrated Design of flood protection measures (Master Plan) and construction of the proposed measures (EL_02_35_02)

while the measure with the greatest benefit (>90) of Category 2 is Nature-based water retention structures in the lowlands (EL_02_31_02)

With regard to the total annualized investment cost (D16) - Table 11-3, the measures with an index >1,000,000 and therefore the most costly in terms of their implementation are, by category:

Category 1 Measures:

Maintenance and rehabilitation of existing flood protection structures (EL_02_35_05)

Category 2 Measures:

- Flood Protection measures (EL_02_33_02)
- Modernization, replacement and maintenance of existing stormwater drainage networks (EL_02_34_01)
- Modernization and rehabilitation of drainage networks (EL_02_33_01)
- Evaluation and maintenance of existing water control measures in upland regions (EL_02_35_03)

DELIVERABLE 19

Translation into English of the summary reports of the methodologies and results of the Deliverables studies

Table 11-2: Prioritization of measures of the 1st revision of the FRMPs for the WD EL02 based on the overall benefit index (D11)

MEASURE NAME	CODE	PILLAR	TYPE OF MEASURE	D11 (overall benefit index)
CATEGORY 1 MEASURES				
Development of a Monitoring System for the Flood Risk Management Plan's Program of Measures	EL_02_61_01	Prevention	Acquisition, completion and improvement of information	100
Actions to prevent and protect Rural Development within the APSFRs	EL_02_21_04	Prevention	Acquisition, completion and improvement of information	98
Flood protection measures for the boreholes of the water service providers	EL_02_23_01	Prevention	Legislative / Administrative Regulations and Technical Flood Protection Measures	98
Restructuring and modernization of the meteorological and hydrometric data collection network	EL_02_24_01	Prevention	Acquisition, completion and improvement of information	93
Integrated Design of flood protection measures (Master Plan) and construction of the proposed measures	EL_02_35_02	Protection	Technical flood protection measures	92
Awareness-raising actions for the public, local authorities and communities against flood risk	EL_02_43_01	Preparedness	Education/information measures	76
Formulation of a regulatory framework for restoring the conveyance capacity of streambeds and for the maintenance and management of riparian vegetation	EL_02_44_01	Preparedness	Legislative/Administrative regulations	75
Maintenance and rehabilitation of existing flood protection structures	EL_02_35_05	Protection	Technical flood protection measures	74
Building and structural regulations within the 100-year flood zone	EL_02_21_02	Prevention	Legislative/Administrative regulations	72
Implementation of Natural Water Retention measures (NWRM) / SUDs practices for projects and activities of subcategory A1 and A2 of Law 4014/2011, as in force.	EL_02_31_03	Protection	Measures of environmental nature (green infrastructure)	71

DELIVERABLE 19

Translation into English of the summary reports of the methodologies and results of the Deliverables studies

MEASURE NAME	CODE	PILLAR	TYPE OF MEASURE	D11 (overall benefit index)
Alignment of the urban development plans with the provisions of the FRMPs	EL_02_21_01	Prevention	Legislative/Administrative regulations	71
Adaptation of the urban development plans in flood prone areas (retention basins)	EL_02_21_03	Prevention	Legislative/Administrative regulations	71
Updating of Emergency Plans, and standardization of emergency flood response procedures/ Development of a local Action Plan Memorandum	EL_02_42_01	Preparedness	Acquisition, completion and improvement of information	70
Establishment of alert thresholds for critical watercourses of WD EL02 based on the provisions of laws 4662/2020 and 5075/2023	EL_02_42_04	Preparedness	Non-structural interventions	70
Collection and digitization of watercourse demarcation data and flood control project data.	EL_02_24_02	Prevention	Acquisition, completion and improvement of information	50
Creation of a National Flood Events database and development of a related interactive online platform	EL_02_24_03	Prevention	Acquisition, completion and improvement of information	50
Identification of borrow pit locations for embankment restoration/maintenance in case of emergency	EL_02_42_03	Preparedness	Measures of environmental nature (green infrastructure)	48
Identification of locations for (temporary or permanent) sediment deposition sites (sediment storage areas)	EL_02_52_01	Recovery	Measures of environmental nature (green infrastructure)	47
CATEGORY 2 MEASURES				
Nature-based water retention structures in the lowlands	EL_02_31_02	Protection	Measures of environmental nature (green infrastructure)	100
Implementation of water control measures in upland regions	EL_02_31_01	Protection	Measures of environmental nature (green infrastructure)	74
Modernization and rehabilitation of drainage networks	EL_02_33_01	Protection	Technical flood protection measures	68

DELIVERABLE 19

Translation into English of the summary reports of the methodologies and results of the Deliverables studies

MEASURE NAME	CODE	PILLAR	TYPE OF MEASURE	D11 (overall benefit index)
Modernization, replacement, maintenance of existing stormwater drainage networks	EL_02_34_01	Protection	Technical flood protection measures	51
Evaluation and Maintenance of Existing water control measures in upland regions	EL_02_35_03	Protection	Technical flood protection measures	36
Development and operation of an early warning system.	EL_02_41_01	Preparedness	Acquisition, completion and improvement of information	25
Flood Protection measures	EL_02_33_02	Protection	Technical flood protection measures	21
Land use management	EL_02_35_04	Protection	Measures of environmental nature (green infrastructure)	19
Warning system to avoid crossing Irish crossings during flood events	EL_02_43_02	Preparedness	Non-structural interventions	18
Plan for controlled flooding of lowland areas to protect settlements and critical infrastructure	EL_02_42_05	Preparedness	Technical flood protection measures	17
Utilization of existing reservoirs with a flood protection component	EL_02_32_02	Protection	Technical flood protection measures	16
Multipurpose reservoirs with a flood protection component	EL_02_32_01	Protection	Legislative / Administrative Regulations and Technical Flood Protection Measures	12

DELIVERABLE 19

Translation into English of the summary reports of the methodologies and results of the Deliverables studies

Table 11-3: Prioritization of measures of the 1st revision of the FRMPs for the WD EL02 based on the total annualized investment cost (D16)

MEASURE NAME	CODE	PILLAR	TYPE OF MEASURE	D16 (total annualized investment cost)
CATEGORY 1 MEASURES				
Maintenance and rehabilitation of existing flood protection structures	EL_02_35_05	Protection	Technical flood protection measures	1,452,400
Flood protection measures for the boreholes of the water service providers	EL_02_23_01	Prevention	Legislative / Administrative Regulations and Technical Flood Protection Measures	307,807
Establishment of alert thresholds for critical watercourses of WD EL02 based on the provisions of laws 4662/2020 and 5075/2023	EL_02_42_04	Preparedness	Non-structural interventions	263,247
Integrated Design of flood protection measures (Master Plan) and construction of the proposed measures	EL_02_35_02	Protection	Technical flood protection measures	217,860
Identification of locations for (temporary or permanent) sediment deposition sites (sediment storage areas)	EL_02_52_01	Recovery	Measures of environmental nature (green infrastructure)	179,734
Identification of borrow pit locations for embankment restoration/maintenance in case of emergency	EL_02_42_03	Preparedness	Measures of environmental nature (green infrastructure)	127,085
Restructuring and modernization of the meteorological and hydrometric data collection network	EL_02_24_01	Prevention	Acquisition, completion and improvement of information	74,620

DELIVERABLE 19

Translation into English of the summary reports of the methodologies and results of the Deliverables studies

MEASURE NAME	CODE	PILLAR	TYPE OF MEASURE	D16 (total annualized investment cost)
Collection and digitization of watercourse demarcation data and flood control project data.	EL_02_24_02	Prevention	Acquisition, completion and improvement of information	55,965
Actions to prevent and protect Rural Development within the APSFRs	EL_02_21_04	Prevention	Acquisition, completion and improvement of information	46,637
Development of a Monitoring System for the Flood Risk Management Plan's Program of Measures	EL_02_61_01	Prevention	Acquisition, completion and improvement of information	38,634
Awareness-raising actions for the public, local authorities and communities against flood risk	EL_02_43_01	Preparedness	Education/information measures	14,524
Formulation of a regulatory framework for restoring the conveyance capacity of streambeds and for the maintenance and management of riparian vegetation	EL_02_44_01	Preparedness	Legislative/Administrative regulations	10,893
Updating of Emergency Plans, and standardization of emergency flood response procedures/ Development of a local Action Plan Memorandum	EL_02_42_01	Preparedness	Acquisition, completion and improvement of information	10,893
Creation of a National Flood Events database and development of a related interactive online platform	EL_02_24_03	Prevention	Acquisition, completion and improvement of information	2,665
Building and structural regulations within the 100-year flood zone	EL_02_21_02	Prevention	Legislative/Administrative regulations	0

DELIVERABLE 19

Translation into English of the summary reports of the methodologies and results of the Deliverables studies

MEASURE NAME	CODE	PILLAR	TYPE OF MEASURE	D16 (total annualized investment cost)
Implementation of Natural Water Retention measures (NWRM) / SUDs practices for projects and activities of subcategory A1 and A2 of Law 4014/2011, as in force.	EL_02_31_03	Protection	Measures of environmental nature (green infrastructure)	0
Alignment of the urban development plans with the provisions of the FRMPs	EL_02_21_01	Prevention	Legislative/Administrative regulations	0
Adaptation of the urban development plans in flood prone areas (retention basins)	EL_02_21_03	Prevention	Legislative/Administrative regulations	0
CATEGORY 2 MEASURES				
Flood Protection measures	EL_02_33_02	Protection	Technical flood protection measures	10,520,805
Modernization, replacement, maintenance of existing stormwater drainage networks	EL_02_34_01	Protection	Technical flood protection measures	3,486,017
Modernization and rehabilitation of drainage networks	EL_02_33_01	Protection	Technical flood protection measures	1,968,312
Evaluation and Maintenance of Existing water control measures in upland regions	EL_02_35_03	Protection	Technical flood protection measures	1,200,366

DELIVERABLE 19

Translation into English of the summary reports of the methodologies and results of the Deliverables studies

MEASURE NAME	CODE	PILLAR	TYPE OF MEASURE	D16 (total annualized investment cost)
Development and operation of an early warning system.	EL_02_41_01	Preparedness	Acquisition, completion and improvement of information	482,069
Warning system to avoid crossing Irish crossings during flood events	EL_02_43_02	Preparedness	Non-structural interventions	90,966
Land use management	EL_02_35_04	Protection	Measures of environmental nature (green infrastructure)	54,650
Utilization of existing reservoirs with a flood protection component	EL_02_32_02	Protection	Technical flood protection measures	19,392
Multipurpose reservoirs with a flood protection component	EL_02_32_01	Protection	Legislative / Administrative Regulations and Technical Flood Protection Measures	8,815
Nature-based water retention structures in the lowlands	EL_02_31_02	Protection	Measures of environmental nature (green infrastructure)	0
Implementation of water control measures in upland regions	EL_02_31_01	Protection	Measures of environmental nature (green infrastructure)	0
Plan for controlled flooding of lowland areas to protect settlements and critical infrastructure	EL_02_42_05	Preparedness	Technical flood protection measures	0

12 Public information and consultation

To inform the public and the relevant bodies and institutions, a sufficient number of meetings were organized during which the Draft Flood Risk Management Plans were presented for public consultation.

The consultations took place at both the local/regional and central levels, aiming to encourage the active participation of stakeholders, either by attending the events or by submitting their proposals on the issues under consultation.

During the implementation of the consultation and communication activities, some or all of the actions described in the following paragraphs were carried out in combination.

- In the first 4 months, inspections were conducted in the study area, meetings were held with relevant agencies and services, and an inspection report was submitted for the special areas located outside the APSFRs.
- The Flood Hazard Maps, along with the accompanying Technical and Non-Technical Reports, were subsequently posted on the website of the General Secretariat for Natural Environment and Water of the Ministry of Environment and Energy: <https://floods.ypeka.gr/>.
- Subsequently, the Flood Risk Maps along with the accompanying Technical and Non-Technical Reports were posted on the website of the Directorate General of the Ministry of Environment and Natural Resources: <http://floods.ypeka.gr/>.
- The Flood Risk Management Drafts and the Strategic Environmental Impact Studies (SEIS) were posted on the website of the General Secretariat for Natural Environment and Water of the Ministry of Environment and Energy: <https://floods.ypeka.gr/consultation/2round-consultation/>.
- A form for submitting observations and corrections to the Draft Plans was posted on the website of the General Secretariat for Natural Environment and Water of the Ministry of Environment and Energy: https://floods.ypeka.gr/wp-content/uploads/2024/06/EL02_2round_consultation_P11-T1.pdf.
- The invitation and program for the Consultation day in Patra, regarding the 1st Revision of the FRMP for the Northern Peloponnese Water District (EL02), have been posted on the website of the General Secretariat for Natural Environment and Water of the Ministry of Environment and Energy.
- The List of Social Partners for the Consultation Day in Patra, regarding the 1st Revision of the FRMP for the Northern Peloponnese Water District (EL02), has been posted on the website of the General Secretariat for Natural Environment and Water of the Ministry of Environment and Energy.
- Questionnaires were posted to enable participation in the consultation process, allowing institutions and the public to briefly express their views. The questionnaires were digital and accessible through the website of the General Secretariat for Natural Environment and Water of the Ministry of Environment and Energy (<https://floods.ypeka.gr/consultation/consultation-events/>). The questionnaire is also included in the Deliverable entitled 'Consultation Results Report'.
- On Tuesday, July 9th, and Monday July 15th 2024, the Consultation Days for the 1st Revision of the FRMPs of the Northern Peloponnese Water District (EL02) were held in Corfu and Patra respectively. During the consultation the following materials were provided in printed and/or electronic form:

DELIVERABLE 19

**Translation into English of the summary reports of the methodologies
and results of the Deliverables studies**

- ✓ Draft Summary of the Flood Risk Management Plan (FRMP) for the Northern Peloponnese Water District
- ✓ Questionnaire on the consultation issues of the Northern Peloponnese Water District

It is noted that the Consultation Day in Corfu focused exclusively on the Ionian Islands included in the Water Districts of: Northern Peloponnese (EL02), Epirus (EL05), and Western Greece (EL04), namely the consultation concerned the following River Basin (RBs) belonging to the respective Water Districts:

- RB of Kefalonia – Ithaca – Zakynthos (EL0245)
- RB of Corfu – Paxoi (EL0534)
- RB of Lefkada (EL0444)

Given that a dedicated consultation day was held in Corfu for RB EL0245 (Kefalonia – Ithaca – Zakynthos) of Water District EL02, the Patras workshop addressed the remaining RBs of the Northern Peloponnese Water District (EL02):

- RBD of Coastal Streams of Northern Peloponnese (EL0227)
- RBD of Peiros – Verga – Pineios (EL0228)

Both the Corfu and Patras Consultation Days were conducted hybridly, featuring both in-person attendance (more than 25 participants in Corfu and over 20 participants in Patras) as well as remote participation by more than 240 participants in Corfu and more than 120 participants in Patras, either via live streaming or recorded broadcast of the events through the following links:

- ✓ https://www.youtube.com/live/BL6GGCG2_vI (Corfu)
- ✓ <https://www.youtube.com/live/31FT7Gz9rNE> (Patras)

The consultation on both the Draft Flood Risk Management Plan and the Strategic Environmental Assessment (SEA) of the 1st Revision of the Flood Risk Management Plan for the Northern Peloponnese Water District (EL02) lasted more than seven months.

The conclusions of the consultation process are summarized as follows:

1. The need to reassess the methodology for determining APSFRs, incorporating the results of the flood hazard and risk analysis from the Flood Risk Management Plan as well as new data on flood events.
2. The necessity of developing specifications for the construction of mountain hydrological management projects, the cleaning of watercourses, and the implementation of natural retention measures for sediments in the lowlands.
3. The necessity of prioritizing nature-based flood protection projects.
4. The necessity of modernizing, maintaining and cleaning the existing drainage ditch network.
5. The impact of climate change on the return period of flood events and the necessity to align the proposed measures with climate change objectives and measures (PESPKA).
6. Adaptation to the most recent administrative divisions as defined by the Ministerial Decision No. 64436/2023 (Government Gazette Issue 4821/B/01-08-2023).
7. The impact of recent fires on the intensity or even potential occurrence of flooding phenomena.

DELIVERABLE 19

**Translation into English of the summary reports of the methodologies
and results of the Deliverables studies**

8. The necessity to enhance the completeness and accuracy of data used in flood risk assessment, including background information, hydrometeorological data, records of historical flood events, technical registries of flood protection projects, and data on human activities.
9. The need to include the competent authorities in the program of measures.
10. The need to modify various fields in the measure sheets of the Program of Measures, or even to remove a measure where necessary.
11. The need to update and supplement Ministerial Decisions, Presidential Decrees, Official Gazette entries, and related legal documents.
12. The further utilization of local knowledge and experience from various agencies and services for the assessment of and response to the impacts of flood events.
13. The contribution of pumped storage projects and hydroelectric projects in general to the flood protection of downstream areas.
14. In areas of controlled flooding, Local and Special Spatial Plans, as well as Delimitation Zones, should be taken into account.
15. The need to further specify certain measures of the Flood Risk Management Plan to enable their implementation at the local level.
16. The need to provide compensatory benefits for residents, livestock breeders, farmers, and professionals who will be negatively affected by the implementation of the measures (e.g., relocation of activities, restructuring of agricultural production toward more flood-resistant crops, etc.).
17. The prioritization of the roles and responsibilities of the involved bodies, considering the applicable legislation, to ensure effective utilization of the results of the Flood Risk Management Plan (FRMP), given that in many cases the bodies involved at each stage of prevention, preparation, and response to flood phenomena are numerous and interdependent.
18. The possibility of financing actions and projects in areas outside the APSFRs.
19. The urgency of promptly initiating and promoting the measures outlined in the Flood Risk Management Plan.
20. The necessity of comprehensive planning for flood protection projects at the catchment level, taking into account the results of the flood hazard and risk analysis from the Flood Risk Management Plan, Directive 2000/60/EC, current Environmental, Spatial, and Urban Planning legislation, as well as all alternative options for managing flood runoff.
21. The difficulties faced by the Public Administration in utilizing the results of the Flood Risk Management Plan, due to insufficient staffing and lack of appropriate expertise within the competent bodies.
22. The issue of non-rational urban planning, which in many cases in Greece follows development rather than precedes it.
23. The complexity of legislation and the division of responsibilities among state bodies, which hinders the easy and rapid resolution of arising issues.

DELIVERABLE 19

**Translation into English of the summary reports of the methodologies
and results of the Deliverables studies**

24. The lack of citizen education on dealing with natural disasters, as well as insufficient environmental education and awareness.
25. The importance of synergy between certain Flood Risk Management Plan measures and specific measures of the River Basin Management Plans.