

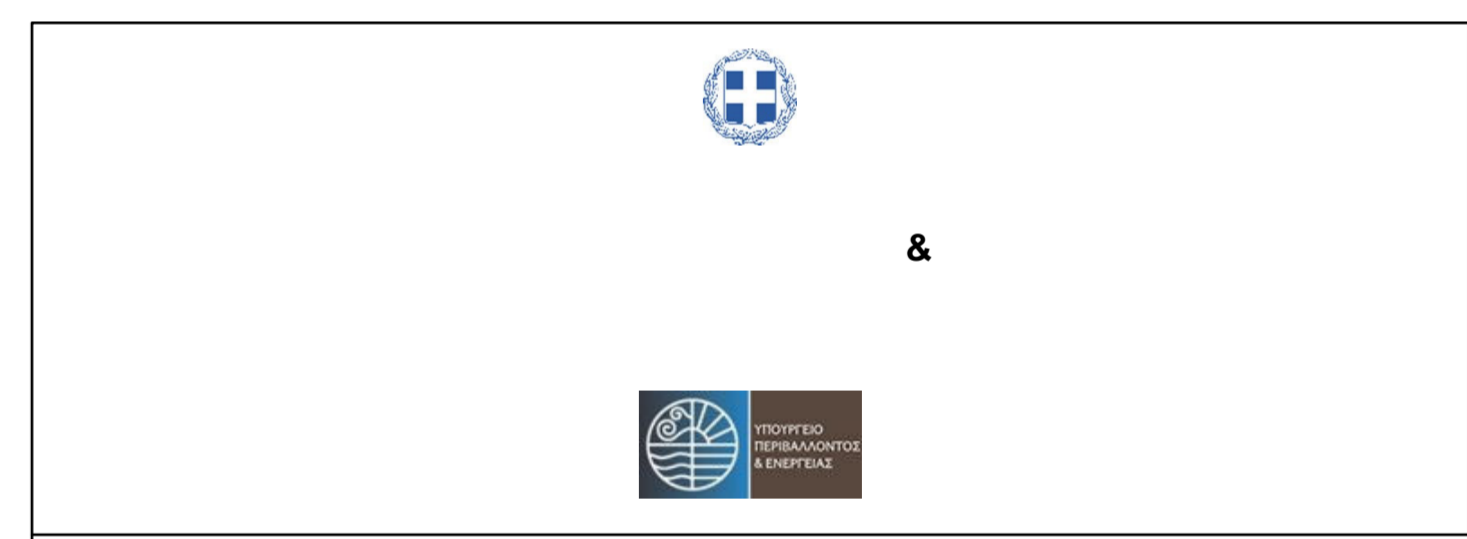
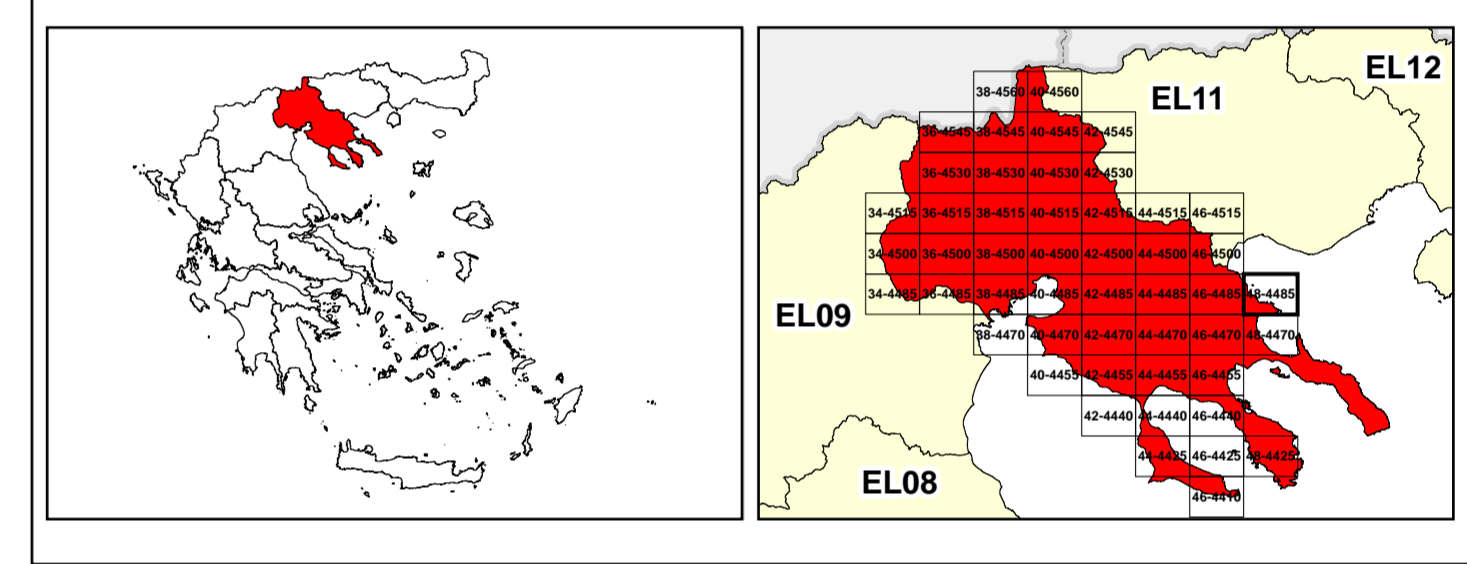


/LEGEND

LANDUSE - ECONOMIC ACTIVITIES - CULTURAL HERITAGE (within flood zone)

/ HOSPITAL	WASTE WATER TREATMENT PLANT	/ CULTURAL HERITANCE SITES
CLINICS-HEALTH UNITS	10,000-100,000	INDUSTRIAL SITES
/ EDUCATION	>100,000 population icon"/> >100,000	/LANDFILL
/ FACILITIES	/ INDUSTRIES	/ DEVELOPED TOURIST AREAS
/ CULTURAL HERITANCE MONUMENTS	IPPC	/ DEVELOPING TOURIST AREAS
CIVIL PROTECTION FACILITIES	SEVESO	/ RICE CROP
LIVESTOCK HOLDINGS	IED	/ GREEN HOUSES
/ ENERGY STATIONS	OTHER UNITS	/ OTHER
/ SMALL HYDROPOWER STATIONS (SHPP)	INDICATIVE AFFECTED POPULATION	CROPS
WATER SUPPLY BOREHOLES-WATER SOURCES	< 500 population icon"/> < 500	PORT
	500 - 2000	FLOOD ZONE T=1000 YEARS
	> 2000	
SC: IMPORTANCE	PROTECTED AREAS OF 2000/60/EC DIRECTIVE	/ SITE OF COMMUNITY IMPORTANCE AND SPECIAL PROTECTION AREAS
SPA: AREAS	/ SITE OF COMMUNITY IMPORTANCE AND SPECIAL PROTECTION AREAS	/ WATER SYSTEMS IDENTIFIED AS RECREATIONAL WATER
BOUNDARIES OF NEIGHBORING STATES	MAJOR NATIONAL ROAD NETWORK	/SECONDARY - TERTIARY NATIONAL ROAD NETWORK
RIVER BASIN DISTRICT EL10	MAJOR PROVINCIAL ROAD NETWORK	/ SECONDARY-TERTIARY PROVINCIAL ROAD NETWORK
OTHER RIVER BASIN DISTRICTS	PROVINCIAL ROAD NETWORK	/ RAILWAY LINE
/APSFR	/ STREAMS	

0 1 2 km
87 2.500
GGRS 87 QUADRATURE PER 2.500 M.



1

μ μ (EL10)
1° - 7

=100 - EL10APFR009
FLUVIAL FLOOD RISK MAP FOR RETURN PERIOD =100 YEARS - APSFR EL10APFR009

EL10-07-FRSK-100-025-48-4485-02	1:25.000
23-12-2023	2.0

/ &

NERCO -