

**/LEGEND**

**LANDUSE - ECONOMIC ACTIVITIES - CULTURAL HERITAGE (within flood zone)**

- / HOSPITAL** (Icon)
- CLINICS-HEALTH UNITS** (Icon)
- / EDUCATION** (Icon)
- FACILITIES** (Icon)
- / CULTURAL HERITAGE MONUMENTS** (Icon)
- CIVIL PROTECTION FACILITIES** (Icon)
- LIVESTOCK HOLDINGS** (Icon)
- / ENERGY STATIONS- STATIONS (SHPP)** (Icon)
- WATER SUPPLY BOREHOLES- WATER SOURCES** (Icon)
- WASTE WATER TREATMENT PLANT** (Icon)
- / INDUSTRIES** (Icon)
- IPPC** (Icon)
- SEVESO** (Icon)
- IED** (Icon)
- OTHER UNITS** (Icon)
- INDICATIVE AFFECTED POPULATION** (Icon)
- PROTECTED AREAS OF 2000/60/EC DIRECTIVE** (Icon)
- SC: IMPORTANCE** (Icon)
- SPA: AREAS** (Icon)
- HERITAGE SITES** (Icon)
- INDUSTRIAL SITES** (Icon)
- / LANDFILL** (Icon)
- AREAS / DEVELOPED TOURIST** (Icon)
- AREAS / DEVELOPING TOURIST** (Icon)
- / RICE CROP** (Icon)
- / GREEN HOUSES** (Icon)
- CROPS** (Icon)
- PORT** (Icon)
- / AIRPORT- =1000** (Icon)
- FLOOD ZONE T=1000 YEARS** (Icon)
- ROAD NETWORK** (Icon)
- MAJOR NATIONAL ROAD NETWORK** (Icon)
- / SECONDARY - TERTIARY NATIONAL ROAD NETWORK** (Icon)
- MAJOR PROVINCIAL ROAD NETWORK** (Icon)
- / SECONDARY-TERTIARY PROVINCIAL ROAD NETWORK** (Icon)
- / RAILWAY LINE** (Icon)

**BOUNDARIES OF NEIGHBORING STATES**

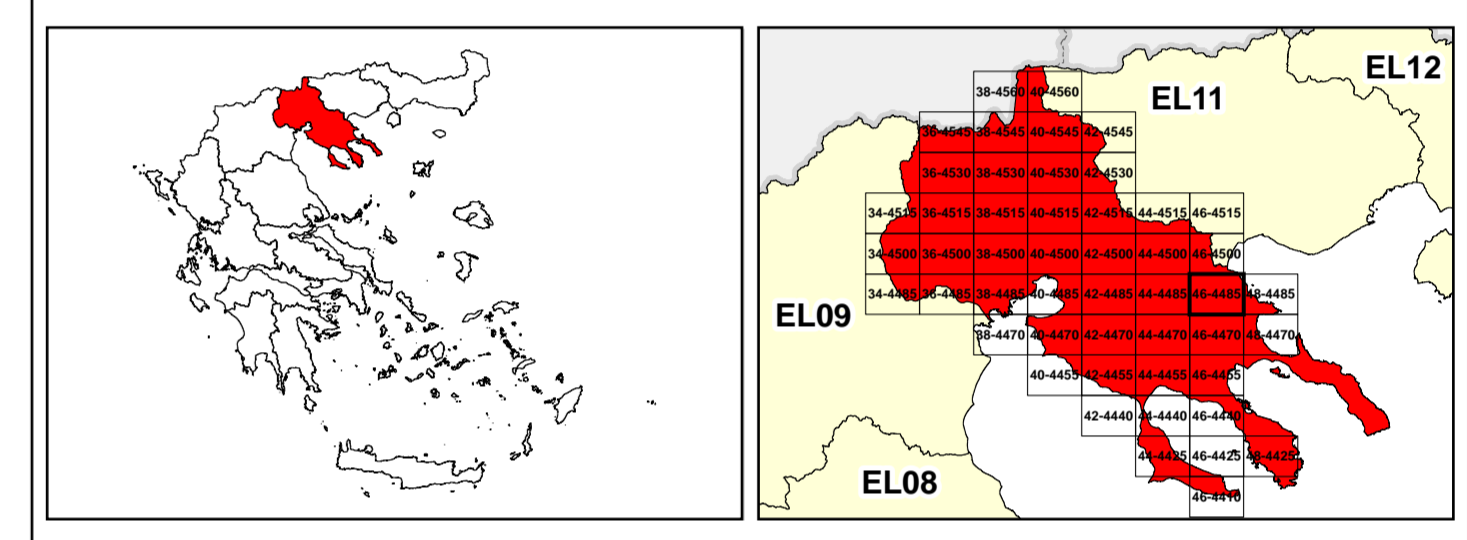
- RIVER BASIN DISTRICT EL10**
- OTHER RIVER BASIN DISTRICTS**
- / APSFR**
- / STREAMS**

**SCALE**

0 100 200 300 400 500 600 700 800 900 1000 1100 1200 1300 1400 1500 1600 1700 1800 1900 2000

GGRS 87 QUADRATURE PER 2.500 M.

2022. (1) 4.957.711m (



**1**

**μ μ (EL10)**

**1° - 7**

**=100 - EL10APPSFR006 & EL10APPSFR009**

**FLUVIAL FLOOD RISK MAP FOR RETURN PERIOD =100 YEARS - APSFR EL10APPSFR006 & EL10APPSFR009**

EL10-07-FRSK-100-025-46-4485-02	1:25.000
23-12-2023	2.0

**NERCO**

**ΕΣΠΑ 2014-2020**

**ΕΥΡΩΠΑΪΚΗ ΕΝΩΣΗ**