

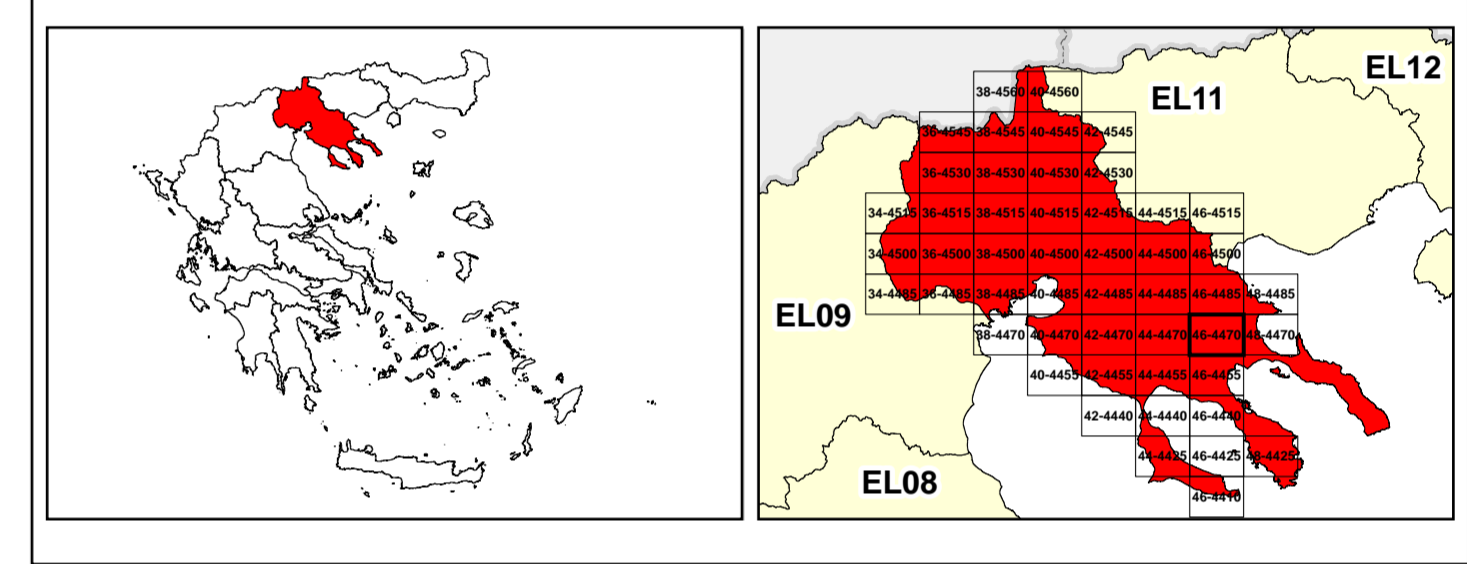


/LEGEND

LANDUSE - ECONOMIC ACTIVITIES - CULTURAL HERITAGE (within flood zone)

- HOSPITAL**
- CLINICS-HEALTH UNITS**
- EDUCATION**
- FACILITIES**
- HERITAGE MONUMENTS**
- CIVIL PROTECTION FACILITIES**
- LIVESTOCK HOLDINGS**
- ENERGY STATIONS - STATIONS (SHP)**
- WATER SUPPLY BOREHOLES - WATER SOURCES**
- WASTE WATER TREATMENT PLANT**
 - <10,000
 - 10,000-100,000
 - >100,000
- INDUSTRIES**
- IPPC**
- SEVESO**
- IED**
- OTHER UNITS**
- INDICATIVE AFFECTED POPULATION**
 - < 500
 - 500 - 2000
 - > 2000
- HERITAGE SITES**
- INDUSTRIAL SITES**
- LANDFILL**
- AREAS / DEVELOPED TOURIST**
- AREAS / DEVELOPING TOURIST**
- AREAS / RICE CROP**
- AREAS / GREEN HOUSES**
- CROPS**
- PORT**
- FLOOD ZONE T=1000 YEARS**
- PROTECTED AREAS OF 2000/60/EC DIRECTIVE**
 - SIC: IMPORTANCE**
 - SPA: AREAS**
 - SPECIAL PROTECTION AREAS**
 - SPECIAL PROTECTION AREAS AS RECREATIONAL WATER**
- BOUNDARIES OF NEIGHBORING STATES**
- RIVER BASIN DISTRICT EL10**
- OTHER RIVER BASIN DISTRICTS**
- APSF**
- STREAMS**
- ROAD NETWORK**
 - MAJOR NATIONAL ROAD NETWORK**
 - SECONDARY - TERTIARY NATIONAL ROAD NETWORK**
 - MAJOR PROVINCIAL ROAD NETWORK**
 - SECONDARY-TERTIARY PROVINCIAL ROAD NETWORK**
 - RAILWAY LINE**

Scale: 0 1000 2000 M
GGRS 87 QUADRATURE PER 2.500 M.



Logo of the Ministry of Environment, Energy and Climate Change of Greece.

1

μ μ (EL10)

1° - 7

=100 - EL10APSF009

FLUVIAL FLOOD RISK MAP FOR RETURN PERIOD =100 YEARS - APSFR EL10APSF009

EL10-07-FRSK-100-025-46-4470-02	1:25.000
23-12-2023	2.0

Logo of NERCO.

Logo of the European Union.

Logo of NSRF 2014-2020.