



/LEGEND

LANDUSE - ECONOMIC ACTIVITIES - CULTURAL HERITAGE (within flood zone)

- HOSPITAL** (Icon)
- CLINICS-HEALTH UNITS** (Icon)
- EDUCATION** (Icon)
- FACILITIES** (Icon)
- HERITANCE MONUMENTS** (Icon)
- CIVIL PROTECTION FACILITIES** (Icon)
- LIVESTOCK HOLDINGS** (Icon)
- ENERGY STATIONS- STATIONS (SHP)** (Icon)
- WATER SUPPLY BOREHOLES- WATER SOURCES** (Icon)
- WASTE WATER TREATMENT PLANT** (Icon)
- INDUSTRIES** (Icon)
- INDICATIVE AFFECTED POPULATION** (Icons for < 500, 500 - 2000, > 2000)
- PROTECTED AREAS OF 2000/60/EC DIRECTIVE** (Icon)
- SC: IMPORTANCE** (Icon)
- SPA: AREAS** (Icon)
- HERITANCE SITES** (Icon)
- INDUSTRIAL SITES** (Icon)
- LANDFILL** (Icon)
- AREAS / DEVELOPED TOURIST** (Icon)
- AREAS / DEVELOPING TOURIST** (Icon)
- RICE CROP** (Icon)
- GREEN HOUSES** (Icon)
- CROPS** (Icon)
- PORT** (Icon)
- FLOOD ZONE T=1000 YEARS** (Icon)
- AIRPORT** (Icon)
- AS RECREATIONAL WATER** (Icon)
- WATER SYSTEMS IDENTIFIED** (Icon)

BOUNDARIES OF NEIGHBORING STATES (Icon)

RIVER BASIN DISTRICT EL10 (Icon)

OTHER RIVER BASIN DISTRICTS (Icon)

APSF (Icon)

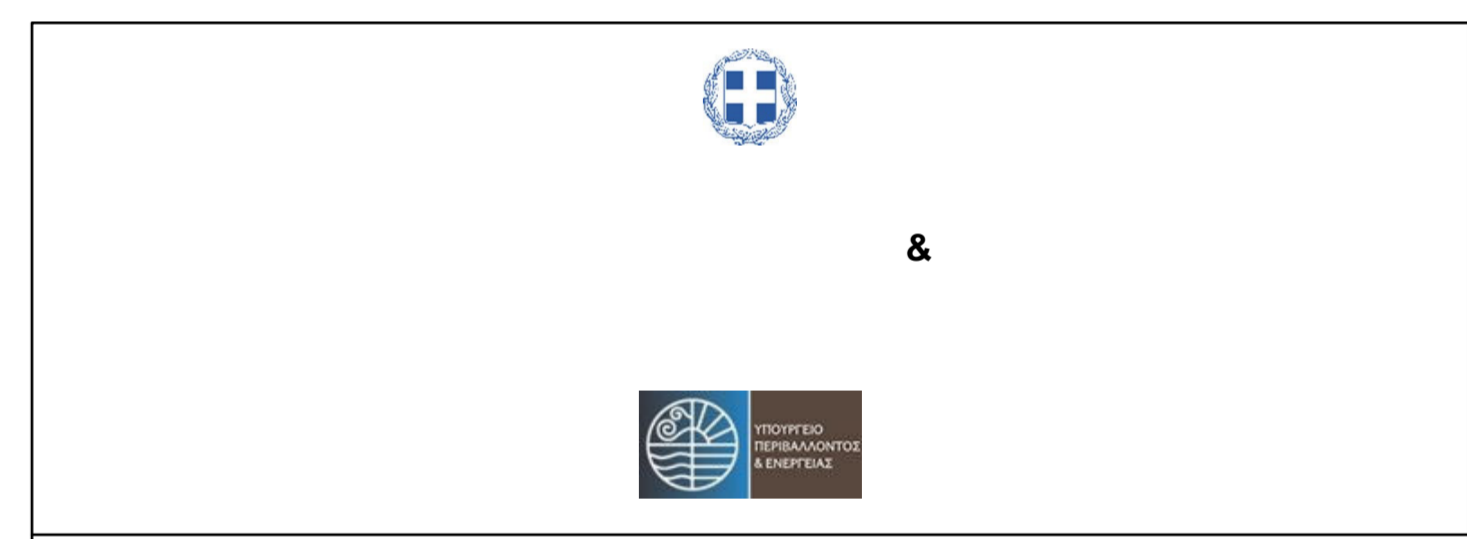
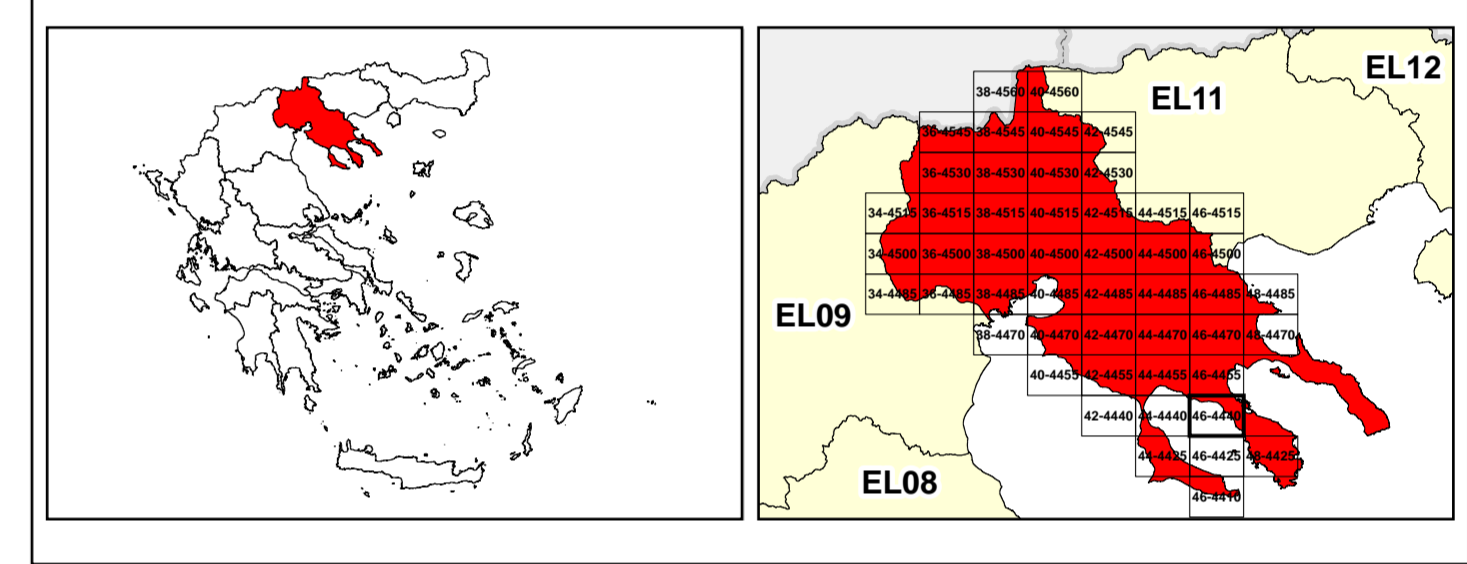
STREAMS (Icon)

ROAD NETWORK

- MAJOR NATIONAL ROAD NETWORK** (Icon)
- SECONDARY - TERTIARY NATIONAL ROAD NETWORK** (Icon)
- MAJOR PROVINCIAL ROAD NETWORK** (Icon)
- SECONDARY-TERTIARY PROVINCIAL ROAD NETWORK** (Icon)
- RAILWAY LINE** (Icon)

Scale: 0, 1, 2, 5, 10 km

GGRS 87 QUADRATURE PER 2.500 M.



1

μ μ (EL10)

1° - 7

=100 - EL10APSF002 & EL10APSF009

EL10-07-FRSK-100-025-46-4440-02	1:25.000
23-12-2023	2.0

NERCO -