

LEGEND

LANDUSE - ECONOMIC ACTIVITIES - CULTURAL HERITAGE (within flood zone)

- HOSPITAL
- CLINICS-HEALTH UNITS
- EDUCATION
- SPORT
- INDUSTRIES
- CULTURAL HERITAGE MONUMENTS
- CIVIL PROTECTION FACILITIES
- LIVESTOCK HOLDINGS
- ENERGY STATIONS
- SMALL HYDROPOWER STATIONS (SHPP)
- WATER SUPPLY BOREHOLES-WATER SOURCES
- WASTE WATER TREATMENT PLANT
- INDUSTRIAL SITES
- LANDFILL
- DEVELOPED TOURIST AREAS
- DEVELOPING TOURIST AREAS
- RICE CROP
- GREEN HOUSES
- CROPS
- PORT
- AIRPORT
- FLOOD ZONE T=1000 YEARS

INDICATIVE AFFECTED POPULATION

- < 500
- 500 - 2000
- > 2000

PROTECTED AREAS OF 2000/60/EC DIRECTIVE

- SC: IMPORTANCE
- SCISPA: SITE OF COMMUNITY IMPORTANCE AND SPECIAL PROTECTION AREAS
- SPA: SPECIAL PROTECTION AREAS
- AS RECREATIONAL WATER
- AS RECREATIONAL WATER

ROAD NETWORK

- MAJOR NATIONAL ROAD NETWORK
- SECONDARY - TERTIARY NATIONAL ROAD NETWORK
- MAJOR PROVINCIAL ROAD NETWORK
- SECONDARY-TERTIARY PROVINCIAL ROAD NETWORK
- RAILWAY LINE

BOUNDARIES OF NEIGHBORING STATES

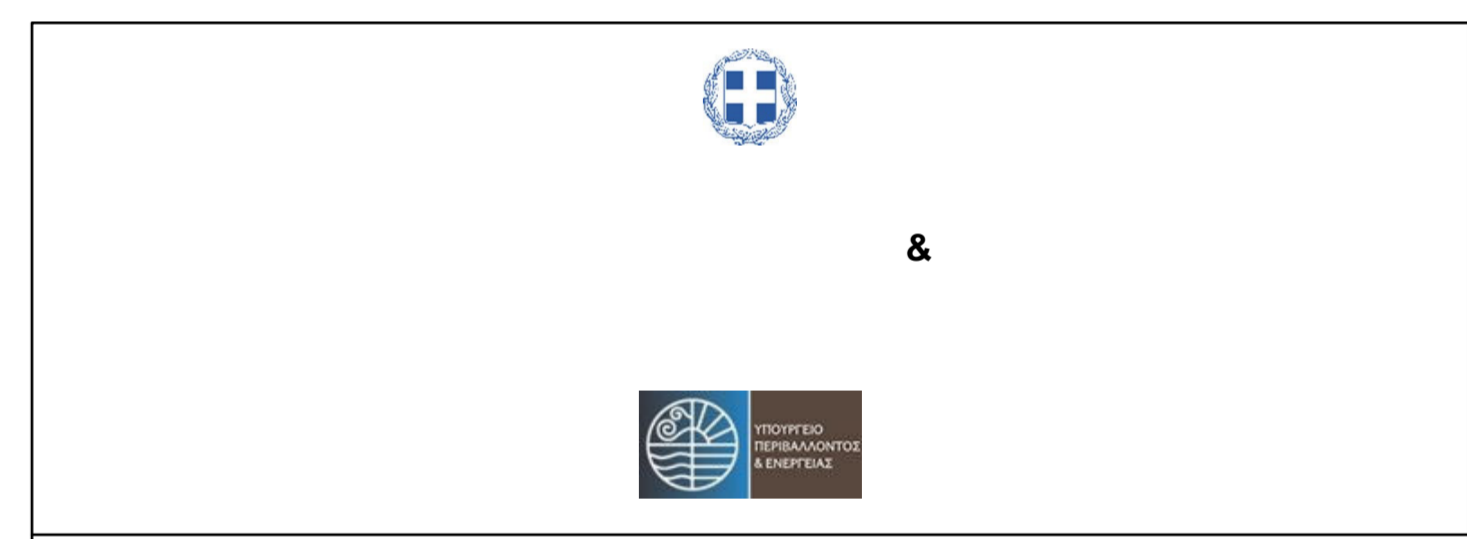
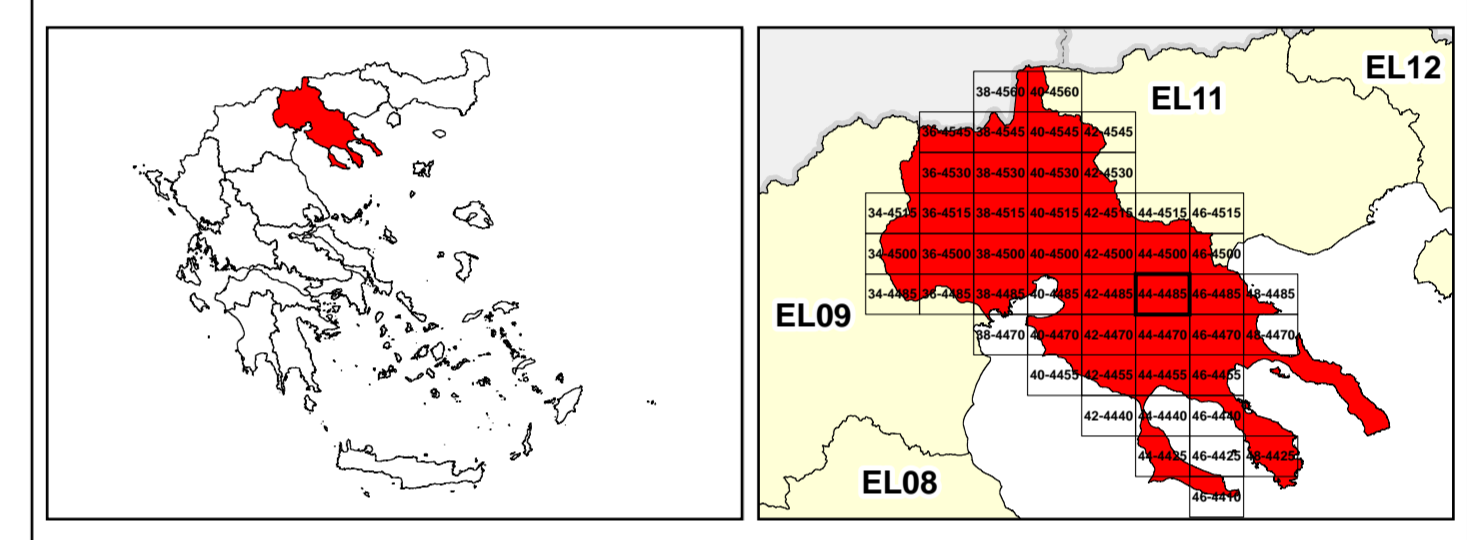
- RIVER BASIN DISTRICT EL10
- OTHER RIVER BASIN DISTRICTS
- APSR
- STREAMS

Scale: 0 1 2 3 4 5 km

GGRS 87 QUADRATURE PER 2.500 M.

2022

(1) 360.615.778ton



1

μ μ (EL10)

1° - 7

=100 - EL10APSR006

FLUVIAL FLOOD RISK MAP FOR RETURN PERIOD =100 YEARS - APSFR EL10APSR006

EL10-07-FRSK-100-025-44-4485-02	1:25.000
23-12-2023	2.0

NERCO