

**/LEGEND**

**LANDUSE - ECONOMIC ACTIVITIES - CULTURAL HERITAGE (within flood zone)**

/ HOSPITAL	WASTE WATER TREATMENT PLANT	/ CULTURAL HERITANCE SITES
CLINICS-HEALTH UNITS	10,000-100,000	INDUSTRIAL SITES
/ EDUCATION FACILITIES	>100,000 population symbol"/> >100,000	LANDFILL
/ SPORT FACILITIES	INDUSTRIES	AREAS / DEVELOPED TOURIST
/ CULTURAL HERITANCE MONUMENTS	IPPC	AREAS / DEVELOPING TOURIST
CIVIL PROTECTION FACILITIES	SEVESO	RICE CROP
LIVESTOCK HOLDINGS	IED	GREEN HOUSES
/ ENERGY STATIONS- STATIONS (SHP)	OTHER UNITS	CROPS
/ SMALL HYDROPOWER STATIONS (SHP)	< 500	AIRPORT
WATER SUPPLY BOREHOLES- WATER SOURCES	500 - 2000	PORT
	> 2000	FLOOD ZONE T=1000 YEARS
SC: IMPORTANCE	PROTECTED AREAS OF 2000/60/EC DIRECTIVE	
SPA: AREAS	SITE OF COMMUNITY	SITE OF COMMUNITY IMPORTANCE AND SPECIAL PROTECTION AREAS
	SPECIAL PROTECTION AREAS	WATER SYSTEMS IDENTIFIED AS RECREATIONAL WATER

**BOUNDARIES OF NEIGHBORING STATES**

**RIVER BASIN DISTRICT EL10**

**OTHER RIVER BASIN DISTRICTS**

**APSF**

**STREAMS**

**ROAD NETWORK**

**MAJOR NATIONAL ROAD NETWORK**

**SECONDARY - TERTIARY NATIONAL ROAD NETWORK**

**MAJOR PROVINCIAL ROAD NETWORK**

**SECONDARY-TERTIARY PROVINCIAL ROAD NETWORK**

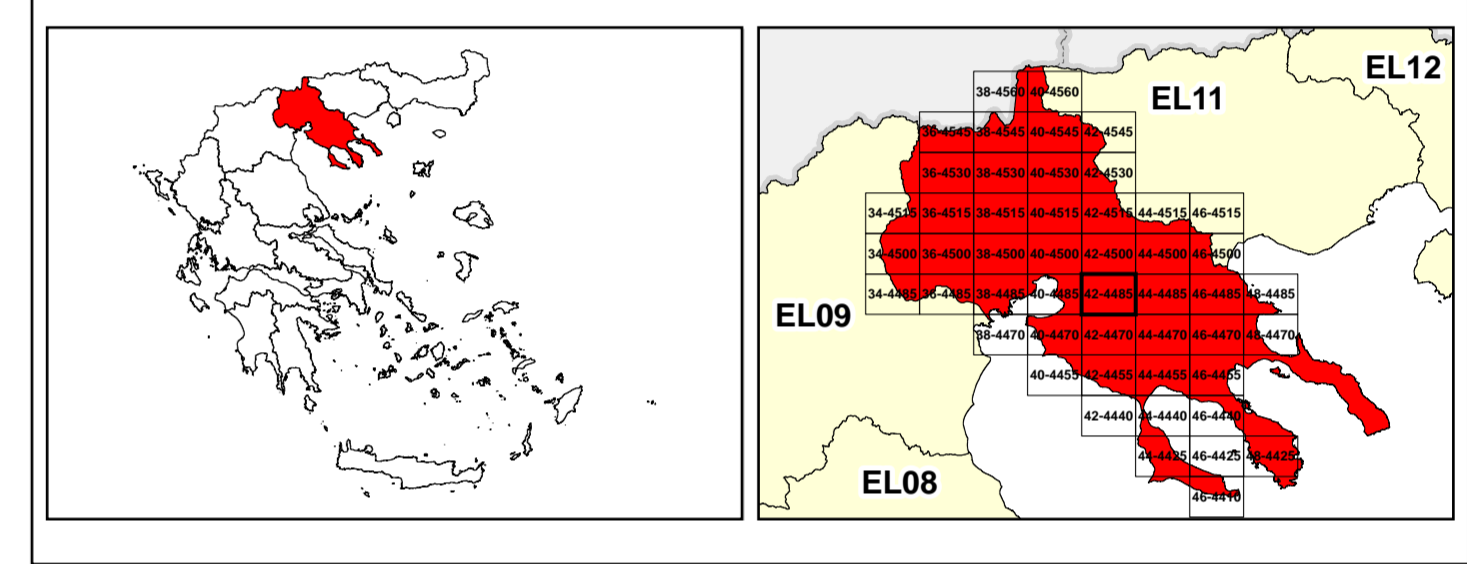
**RAILWAY LINE**

0 1 2 3 4 5 km

GGRS 87 QUADRATURE PER 2.500 M.

2022

(1) 360.615.778m (



**&**

**1**

**μ μ (EL10)**

**1° - 7**

**=100 - EL10APSF006 & EL10APSF008**

**FLUVIAL FLOOD RISK MAP FOR RETURN PERIOD =100 YEARS - APSFR EL10APSF006 & EL10APSF008**

EL10-07-FRSK-100-025-42-4485-02	1:25.000
23-12-2023	2.0

**NERCO**

**ΕΣΠΑ 2014-2020**