

/LEGEND

LANDUSE - ECONOMIC ACTIVITIES - CULTURAL HERITAGE (within flood zone)

/ HOSPITAL	WASTE WATER TREATMENT PLANT	/ CULTURAL HERITANCE SITES
CLINICS-HEALTH UNITS	<10,000	INDUSTRIAL SITES
/ EDUCATION	10,000-100,000	LANDFILL
FACILITIES	>100,000	/ DEVELOPED TOURIST AREAS
HERITAGE MONUMENTS	IPPC	/ DEVELOPING TOURIST AREAS
CIVIL PROTECTION FACILITIES	SEVESO	/ RICE CROP
LIVESTOCK HOLDINGS	IED	/ GREEN HOUSES
/ ENERGY STATIONS-	OTHER UNITS	CROPS
/ SMALL HYDROPOWER STATIONS (SHPP)	INDICATIVE AFFECTED POPULATION	/ AIRPORT-
WATER SUPPLY BOREHOLES-WATER SOURCES	< 500	FLOOD ZONE T=1000 YEARS
	500 - 2000	
	> 2000	

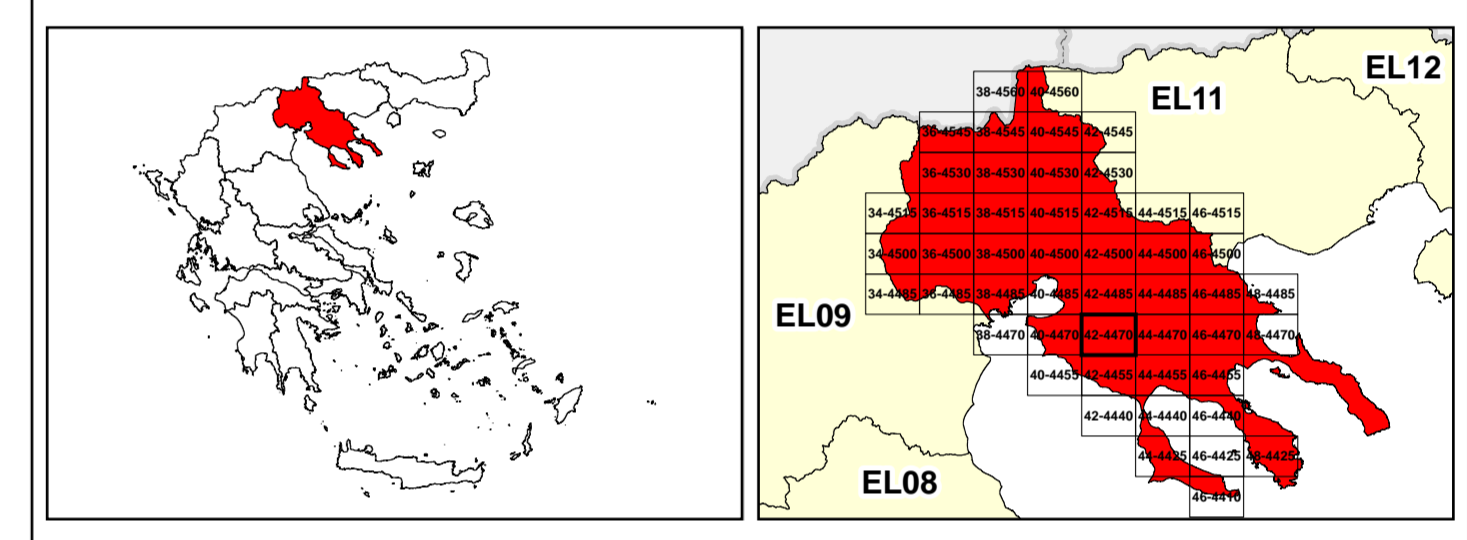
PROTECTED AREAS OF 2000/60/EC DIRECTIVE

SC: IMPORTANCE	/ SITE OF COMMUNITY IMPORTANCE AND SPECIAL PROTECTION AREAS
SPA: AREAS	/ SPECIAL PROTECTION AS RECREATIONAL WATER

BOUNDARIES OF NEIGHBORING STATES

RIVER BASIN DISTRICT EL10	MAJOR NATIONAL ROAD NETWORK
OTHER RIVER BASIN DISTRICTS	/SECONDARY - TERTIARY NATIONAL ROAD NETWORK
/ STREAMS	MAJOR PROVINCIAL ROAD NETWORK
/ APSFR	/ SECONDARY-TERTIARY PROVINCIAL ROAD NETWORK
	/ RAILWAY LINE

0 87 2.500 M
GGRS 87 QUADRATURE PER 2.500 M.



&

1

μ μ (EL10)

1° - 7

=100 - EL10APSR004, EL10APSR006 & EL10APSR008

FLUVIAL FLOOD RISK MAP FOR RETURN PERIOD =100 YEARS - APSFR EL10APSR004, EL10APSR006 & EL10APSR008

EL10-07-FRSK-100-025-42-4470-02	1:25.000
23-12-2023	2.0

&

NERCO