



/LEGEND

LANDUSE - ECONOMIC ACTIVITIES - CULTURAL HERITAGE (within flood zone)

- HOSPITAL** (Icon)
- CLINICS-HEALTH UNITS** (Icon)
- EDUCATION** (Icon)
- FACILITIES** (Icon)
- HERITAGE MONUMENTS** (Icon)
- CIVIL PROTECTION FACILITIES** (Icon)
- LIVESTOCK HOLDINGS** (Icon)
- ENERGY STATIONS** (Icon)
- SMALL HYDROPOWER STATIONS (SHPP)** (Icon)
- WATER SUPPLY BOREHOLES-WATER SOURCES** (Icon)
- WASTE WATER TREATMENT PLANT** (Icon)
- INDUSTRIES** (Icon)
- IPPC** (Icon)
- SEVESO** (Icon)
- IED** (Icon)
- OTHER UNITS** (Icon)
- CULTURAL HERITAGE SITES** (Icon)
- INDUSTRIAL SITES** (Icon)
- LANDFILL** (Icon)
- DEVELOPED TOURIST AREAS** (Icon)
- DEVELOPING TOURIST AREAS** (Icon)
- RICE CROP** (Icon)
- GREEN HOUSES** (Icon)
- CROPS** (Icon)
- PORT** (Icon)
- FLOOD ZONE T=1000 YEARS** (Icon)
- AIRPORT** (Icon)
- OTHER** (Icon)

INDICATIVE AFFECTED POPULATION

- < 500 (Icon)
- 500 - 2000 (Icon)
- > 2000 (Icon)

PROTECTED AREAS OF 2000/60/EC DIRECTIVE

- SC: IMPORTANCE** (Icon)
- SPA: AREAS** (Icon)
- SCISPA: SITE OF COMMUNITY IMPORTANCE AND SPECIAL PROTECTION AREAS** (Icon)
- SPECIAL PROTECTION AS RECREATIONAL WATER** (Icon)
- WATER SYSTEMS IDENTIFIED** (Icon)

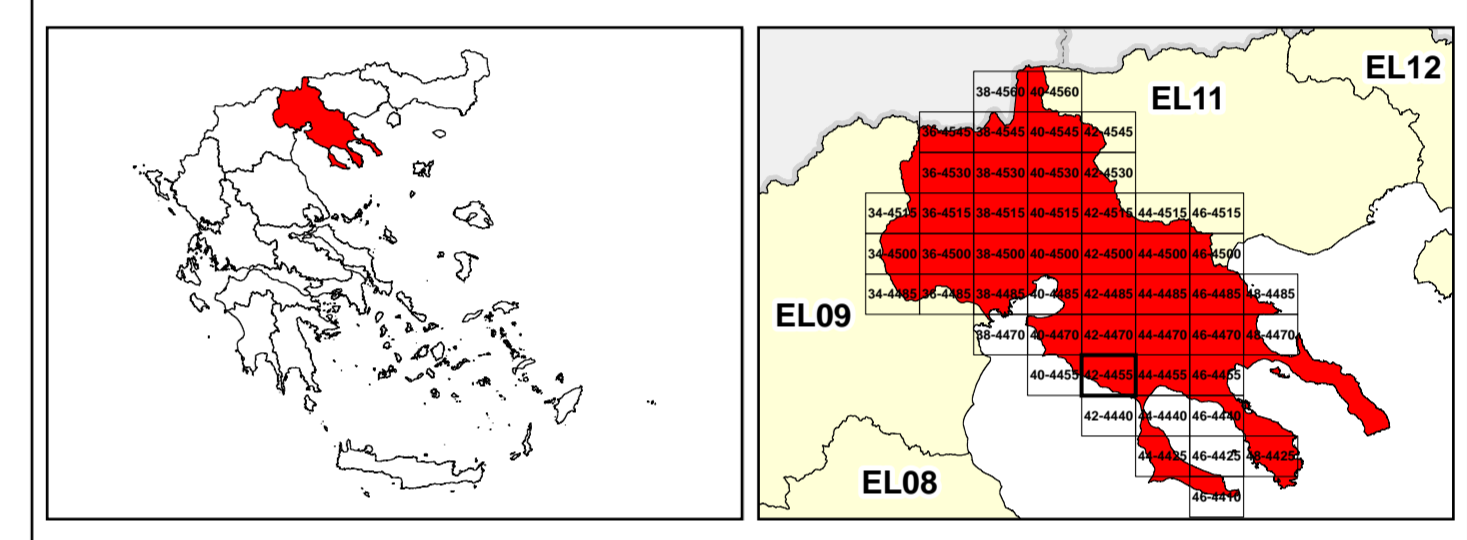
BOUNDARIES OF NEIGHBORING STATES

- RIVER BASIN DISTRICT EL10** (Icon)
- OTHER RIVER BASIN DISTRICTS** (Icon)
- APSF** (Icon)
- STREAMS** (Icon)

ROAD NETWORK

- MAJOR NATIONAL ROAD NETWORK** (Icon)
- NATIONAL ROAD NETWORK** (Icon)
- MAJOR PROVINCIAL ROAD NETWORK** (Icon)
- SECONDARY-TERTIARY PROVINCIAL ROAD NETWORK** (Icon)
- RAILWAY LINE** (Icon)

Scale: 0 to 2.500 M. GGRS 87 QUADRATURE PER 2.500 M.



Logo of the Ministry of Environment, Energy and Climate Change of Greece.

1

μ μ (EL10)
1° 7

=100 EL10APSF003 & EL10APSF004

FLUVIAL FLOOD RISK MAP FOR RETURN PERIOD =100 YEARS - APSFR EL10APSF003 & EL10APSF004

EL10-07-FRSK-100-025-42-4455-02	1:25.000
23-12-2023	2.0

NERCO

Logo of the European Union.

Logo of NSRF (ΕΣΠΑ) 2014-2020.