



/LEGEND

LANDUSE - ECONOMIC ACTIVITIES - CULTURAL HERITAGE (within flood zone)

- / HOSPITAL** (Red cross symbol)
- CLINICS-HEALTH UNITS** (Red circle with cross)
- / EDUCATION** (Blue circle with book)
- FACILITIES** (Red circle with building)
- / CULTURAL HERITAGE MONUMENTS** (Red circle with monument)
- CIVIL PROTECTION FACILITIES** (Red circle with fire)
- LIVESTOCK HOLDINGS** (Yellow circle with cow)
- / ENERGY STATIONS- STATIONS (SHP)** (Yellow circle with turbine)
- WATER SUPPLY BOREHOLES- WATER SOURCES** (Yellow circle with tap)
- WASTE WATER TREATMENT PLANT**
 - <10,000 (Blue circle with WWT)
 - 10,000-100,000 (Blue circle with WWT)
 - >100,000 (Blue circle with WWT)
- / INDUSTRIES**
 - IPPC (Red circle with factory)
 - SEVESO (Red circle with factory)
 - IED (Red circle with factory)
 - OTHER UNITS (Red circle with factory)
- INDICATIVE AFFECTED POPULATION**
 - < 500 (Pink circle with people)
 - 500 - 2000 (Pink circle with people)
 - > 2000 (Pink circle with people)
- HERITAGE SITES** (Yellow rectangle with grid)
- INDUSTRIAL SITES** (Yellow rectangle with grid)
- / LANDFILL** (Green rectangle with grid)
- AREAS / DEVELOPED TOURIST** (Yellow rectangle with grid)
- AREAS / DEVELOPING TOURIST** (Yellow rectangle with grid)
- / RICE CROP** (Yellow rectangle with grid)
- / GREEN HOUSES** (Yellow rectangle with grid)
- CROPS / OTHER** (Green rectangle with grid)
- PORT** (Blue rectangle with grid)
- FLOOD ZONE T=1000 YEARS** (Blue rectangle with grid)

PROTECTED AREAS OF 2000/60/EC DIRECTIVE

- / SITE OF COMMUNITY IMPORTANCE** (Green dashed line)
- SCISPA: / SITE OF COMMUNITY IMPORTANCE AND SPECIAL PROTECTION AREAS** (Red dashed line)
- / SPECIAL PROTECTION AS RECREATIONAL WATER** (Blue dashed line)
- / WATER SYSTEMS IDENTIFIED** (Blue dashed line)

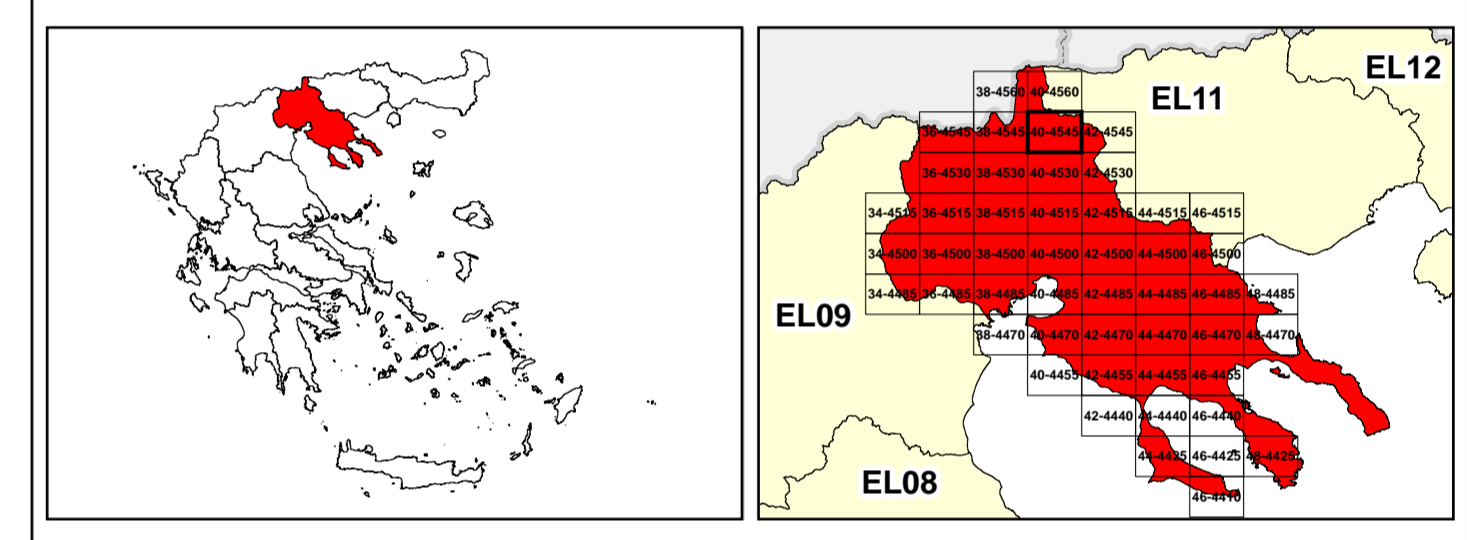
BOUNDARIES OF NEIGHBORING STATES

- RIVER BASIN DISTRICT EL10** (Black dashed line)
- OTHER RIVER BASIN DISTRICTS** (Red dashed line)
- / APSFR** (Red dashed line)
- / STREAMS** (Blue dashed line)

/ ROAD NETWORK

- MAJOR NATIONAL ROAD NETWORK** (Thick black line)
- / SECONDARY - TERTIARY NATIONAL ROAD NETWORK** (Thin black line)
- MAJOR PROVINCIAL ROAD NETWORK** (Red line)
- / SECONDARY-TERTIARY PROVINCIAL ROAD NETWORK** (Thin red line)
- / RAILWAY LINE** (Black line with cross-ticks)

Scale: 0 to 2.500 M. GGRS 87 QUADRATURE PER 2.500 M.



Logo of the Ministry of Environment, Energy and Climate Change of Greece.

1

μ μ (EL10)

1° - 7

=100 - EL10APSR008

FLUVIAL FLOOD RISK MAP FOR RETURN PERIOD =100 YEARS - APSFR EL10APSR008

EL10-07-FRSK-100-025-40-4545-02	1:25.000
23-12-2023	2.0

NERCO

Logo of the European Union.

Logo of the Ministry of Environment, Energy and Climate Change of Greece (ΕΣΠΑ 2014-2020).