



**/LEGEND**

**LANDUSE - ECONOMIC ACTIVITIES - CULTURAL HERITAGE (within flood zone)**

- HOSPITAL** (Red circle with cross)
- CLINICS-HEALTH UNITS** (Red circle with cross)
- EDUCATION** (Red circle with cross)
- FACILITIES** (Red circle with cross)
- HERITAGE MONUMENTS** (Red circle with cross)
- CIVIL PROTECTION FACILITIES** (Red circle with cross)
- LIVESTOCK HOLDINGS** (Red circle with cross)
- ENERGY STATIONS- STATIONS (SHPP)** (Red circle with cross)
- WATER SUPPLY BOREHOLES- WATER SOURCES** (Red circle with cross)
- WASTE WATER TREATMENT PLANT** (Blue circle with cross)
- INDUSTRIES** (Blue circle with cross)
- IPPC** (Red circle with cross)
- SEVESO** (Red circle with cross)
- IED** (Red circle with cross)
- OTHER UNITS** (Red circle with cross)
- INDICATIVE AFFECTED POPULATION** (Pink figures)
- PROTECTED AREAS OF 2000/60/EC DIRECTIVE** (Green dashed line)
- SITE OF COMMUNITY IMPORTANCE** (Green dashed line)
- SPECIAL PROTECTION AREAS** (Red dashed line)
- CULTURAL HERITAGE SITES** (Yellow rectangle)
- INDUSTRIAL SITES** (Purple rectangle)
- LANDFILL** (Green rectangle)
- AREAS / DEVELOPED TOURIST** (Orange rectangle)
- AREAS / DEVELOPING TOURIST** (Yellow rectangle)
- RICE CROP** (Green rectangle)
- GREEN HOUSES** (Yellow rectangle)
- CROPS** (Green rectangle)
- PORT** (Blue rectangle)
- FLOOD ZONE T=1000 YEARS** (Blue rectangle)
- ROAD NETWORK** (Black line)
- MAJOR NATIONAL ROAD NETWORK** (Thick black line)
- SECONDARY - TERTIARY NATIONAL ROAD NETWORK** (Thin black line)
- MAJOR PROVINCIAL ROAD NETWORK** (Red line)
- SECONDARY-TERTIARY PROVINCIAL ROAD NETWORK** (Thin red line)
- RAILWAY LINE** (Black line with cross-ticks)

**BOUNDARIES OF NEIGHBORING STATES** (Dashed line)

**RIVER BASIN DISTRICT EL10** (Yellow rectangle)

**OTHER RIVER BASIN DISTRICTS** (Yellow rectangle)

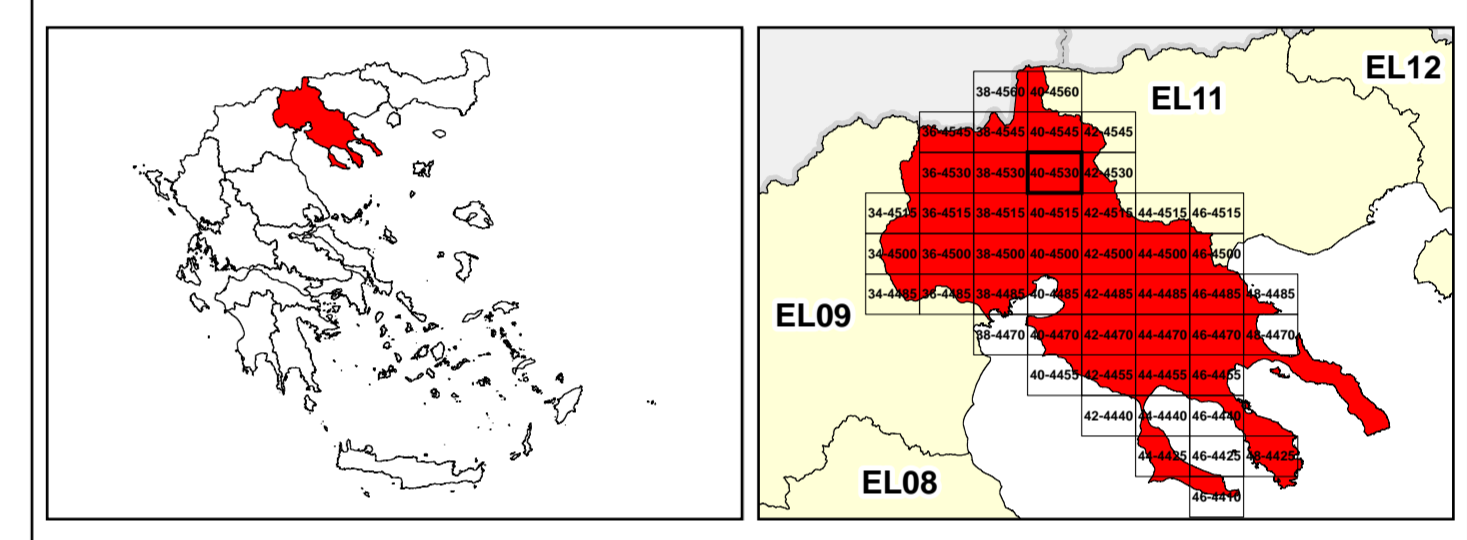
**APSF** (Red rectangle)



**STREAMS** (Blue line)

**GGRS 67 QUADRATURE PER 2.500 M.**

**SCALE:** 0, 87, 2.500 M.

**COORDINATES:** 402500, 405000, 407500, 410000, 412500, 415000, 417500 Easting; 4532500, 4535000, 4537500, 4540000, 4542500, 4545000, 4547500 Northing




  
 &
   


1

μ μ (EL10)

1° - 7

=100 - EL10APSF008

**FLUVIAL FLOOD RISK MAP FOR RETURN PERIOD =100 YEARS - APSFR EL10APSF008**

EL10-07-FRSK-100-025-40-4530-02	1:25.000
23-12-2023	2.0

NERCO

