

/LEGEND

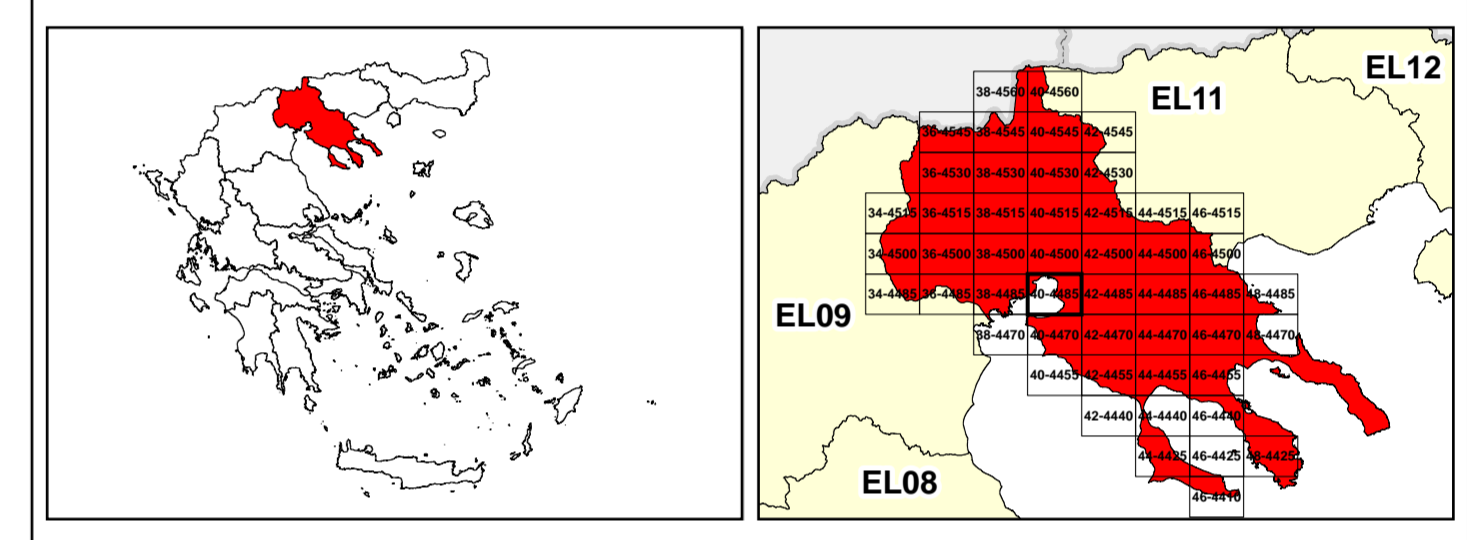
LANDUSE - ECONOMIC ACTIVITIES - CULTURAL HERITAGE (within flood zone)

- HOSPITAL**
- CLINICS-HEALTH UNITS**
- EDUCATION**
- FACILITIES**
- HERITAGE MONUMENTS**
- CIVIL PROTECTION FACILITIES**
- LIVESTOCK HOLDINGS**
- ENERGY STATIONS- STATIONS (SHP)**
- WATER SUPPLY BOREHOLES- WATER SOURCES**
- WASTE WATER TREATMENT PLANT**
 - <10,000
 - 10,000-100,000
 - >100,000
- INDUSTRIES**
 - IPPC
 - SEVESO
 - IED
 - OTHER UNITS
- INDICATIVE AFFECTED POPULATION**
 - < 500
 - 500 - 2000
 - > 2000
- HERITAGE SITES**
- INDUSTRIAL SITES**
- LANDFILL**
- AREAS / DEVELOPED TOURIST**
- AREAS / DEVELOPING TOURIST**
- AREAS / RICE CROP**
- AREAS / GREEN HOUSES**
- CROPS**
- PORT**
- FLOOD ZONE T=1000 YEARS**
- PROTECTED AREAS OF 2000/60/EC DIRECTIVE**
 - SC: IMPORTANCE
 - SPA: AREAS
 - SCISPA: SITE OF COMMUNITY IMPORTANCE AND SPECIAL PROTECTION AREAS
 - SPECIAL PROTECTION AS RECREATIONAL WATER
 - WATER SYSTEMS IDENTIFIED
- BOUNDARIES OF NEIGHBORING STATES**
- RIVER BASIN DISTRICT EL10**
- OTHER RIVER BASIN DISTRICTS**
- APSR**
- STREAMS**
- ROAD NETWORK**
 - MAJOR NATIONAL ROAD NETWORK
 - SECONDARY - TERTIARY NATIONAL ROAD NETWORK
 - MAJOR PROVINCIAL ROAD NETWORK
 - SECONDARY-TERTIARY PROVINCIAL ROAD NETWORK
 - RAILWAY LINE

GGRS 87 QUADRATURE PER 2.500 M.

0 2.500 5000 7500 10000

2022. (1) 26.793.815m (2) 48.269.722m



ΕΛΛΗΝΙΚΗ ΔΗΜΟΚΡΑΤΙΑ

ΥΠΟΥΡΓΕΙΟ ΠΕΡΙΒΑΛΛΟΝΤΟΣ ΚΑΙ ΚΛΙΜΑΤΟΣ

1

μ μ (EL10)

1° - 7

=100 - EL10APSR008

FLUVIAL FLOOD RISK MAP FOR RETURN PERIOD =100 YEARS - APSFR EL10APSR008

EL10-07-FRSK-100-025-40-4485-02	1:25.000
23-12-2023	2.0

NERCO

ΕΥΡΩΠΑΪΚΟ ΚΑΙ ΕΛΛΗΝΙΚΟ ΚΑΤΑΧΡΗΜΑΤΙΣΤΙΚΟ ΣΧΗΜΑ 2014-2020