



/LEGEND

LANDUSE - ECONOMIC ACTIVITIES - CULTURAL HERITAGE (within flood zone)

- / HOSPITAL
- CLINICS-HEALTH UNITS
- / EDUCATION
- FACILITIES
- / CULTURAL HERITAGE MONUMENTS
- CIVIL PROTECTION FACILITIES
- LIVESTOCK HOLDINGS
- / ENERGY STATIONS
- / SMALL HYDROPOWER STATIONS (SHP)
- WATER SUPPLY BOREHOLES-WATER SOURCES
- WASTE WATER TREATMENT PLANT
- INDUSTRIES
- INDICATIVE AFFECTED POPULATION
- PROTECTED AREAS OF 2000/60/EC DIRECTIVE
- SC: IMPORTANCE
- SPA: AREAS
- HERITAGE SITES
- INDUSTRIAL SITES
- LANDFILL
- AREAS / DEVELOPED TOURIST
- AREAS / DEVELOPING TOURIST
- GREEN HOUSES
- CROPS
- PORT
- FLOOD ZONE T=1000 YEARS
- CULTURAL
- INDUSTRIAL SITES
- LANDFILL
- AREAS / DEVELOPED TOURIST
- AREAS / DEVELOPING TOURIST
- RICE CROP
- GREEN HOUSES
- CROPS
- AIRPORT
- FLOOD ZONE T=1000 YEARS
- AS RECREATIONAL WATER
- WATER SYSTEMS IDENTIFIED

BOUNDARIES OF NEIGHBORING STATES

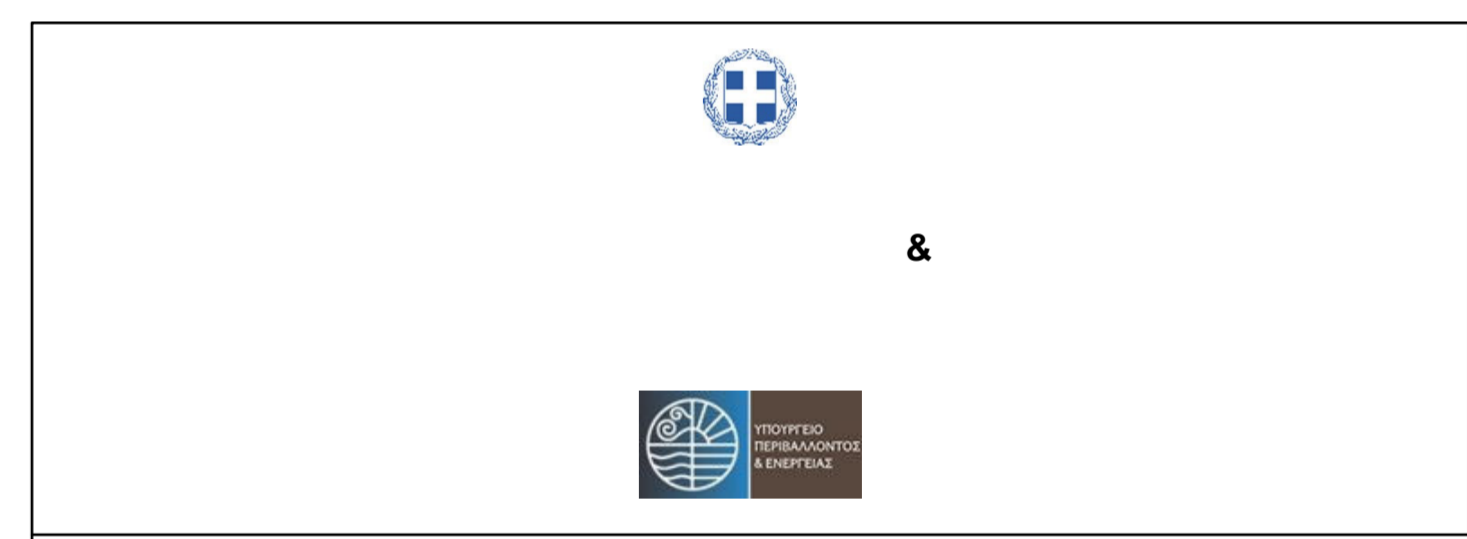
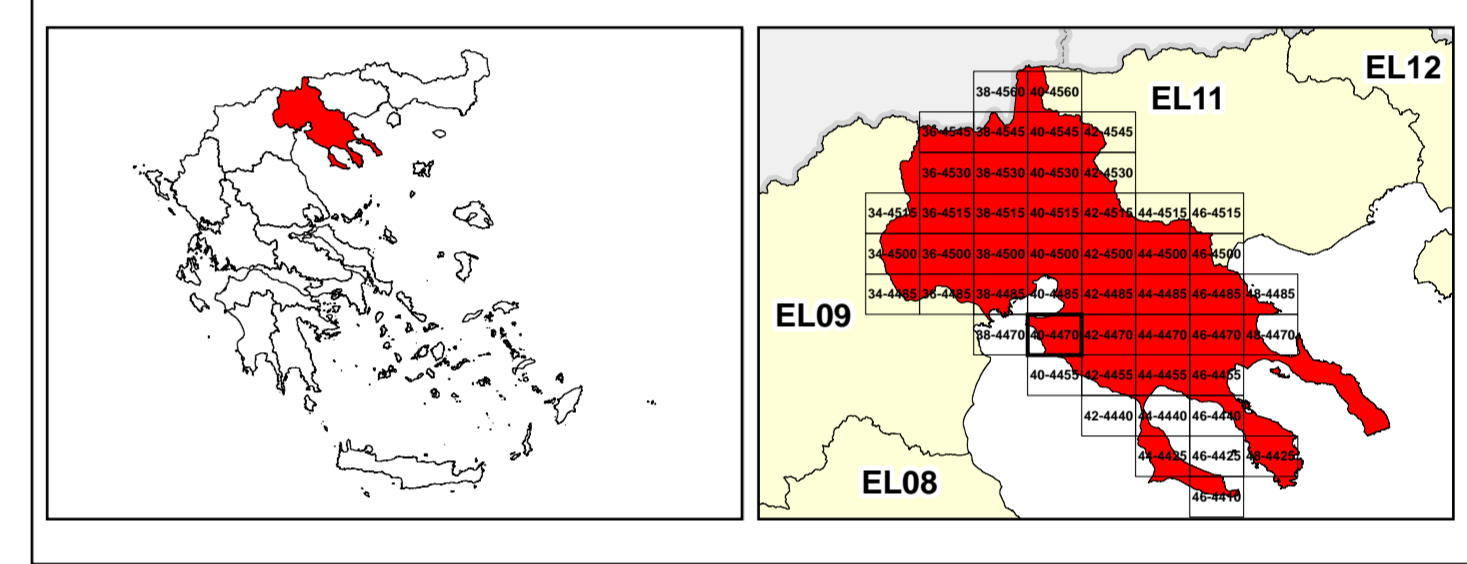
- EL10/ RIVER BASIN DISTRICT EL10
- OTHER RIVER BASIN DISTRICTS
- APSF
- STREAMS

ROAD NETWORK

- MAJOR NATIONAL ROAD NETWORK
- SECONDARY - TERTIARY NATIONAL ROAD NETWORK
- MAJOR PROVINCIAL ROAD NETWORK
- SECONDARY-TERTIARY PROVINCIAL ROAD NETWORK
- RAILWAY LINE

0 87 2.500 km
GGRS 87 QUADRATURE PER 2.500 M.

2022. (1) 18.763.078m (2) 48.269.722m



1

μ μ (EL10)
1° - 7

=100 EL10APSF004 & EL10APSF008

FLUVIAL FLOOD RISK MAP FOR RETURN PERIOD =100 YEARS - APSFR EL10APSF004 & EL10APSF008

EL10-07-FRSK-100-025-40-4470-02	1:25.000
23-12-2023	2.0

/ &

NERCO -