



/LEGEND

LANDUSE - ECONOMIC ACTIVITIES - CULTURAL HERITAGE (within flood zone)

/ HOSPITAL	WASTE WATER TREATMENT PLANT	/ CULTURAL HERITANCE SITES
CLINICS-HEALTH UNITS	<10,000	INDUSTRIAL SITES
/ EDUCATION	10,000-100,000	LANDFILL
FACILITIES	>100,000	AREAS / DEVELOPED TOURIST
HERITAGE MONUMENTS	IPPC	AREAS / DEVELOPING TOURIST
CIVIL PROTECTION FACILITIES	SEVESO	/ RICE CROP
LIVESTOCK HOLDINGS	IED	/ GREEN HOUSES
/ ENERGY STATIONS-	OTHER UNITS	CROPS / OTHER
/ SMALL HYDROPOWER STATIONS (SHP)	INDICATIVE AFFECTED POPULATION	PORT =1000
WATER SUPPLY BOREHOLES- WATER SOURCES	< 500	FLOOD ZONE T=1000 YEARS
	500 - 2000	
	> 2000	
SC: IMPORTANCE	PROTECTED AREAS OF 2000/60/EC DIRECTIVE	/ SITE OF COMMUNITY IMPORTANCE AND SPECIAL PROTECTION AREAS
SPA: AREAS	/ SITE OF COMMUNITY	/ WATER SYSTEMS IDENTIFIED AS RECREATIONAL WATER

BOUNDARIES OF NEIGHBORING STATES

RIVER BASIN DISTRICT EL10

OTHER RIVER BASIN DISTRICTS

APSF

STREAMS

ROAD NETWORK

MAJOR NATIONAL ROAD NETWORK

SECONDARY - TERTIARY NATIONAL ROAD NETWORK

MAJOR PROVINCIAL ROAD NETWORK

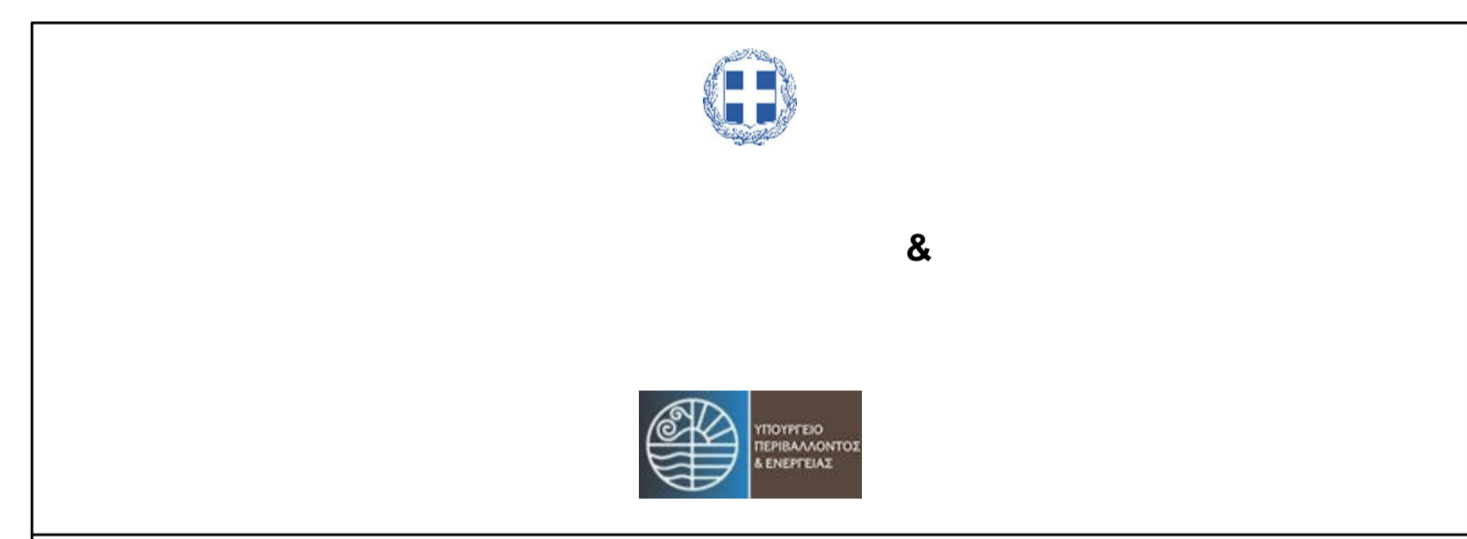
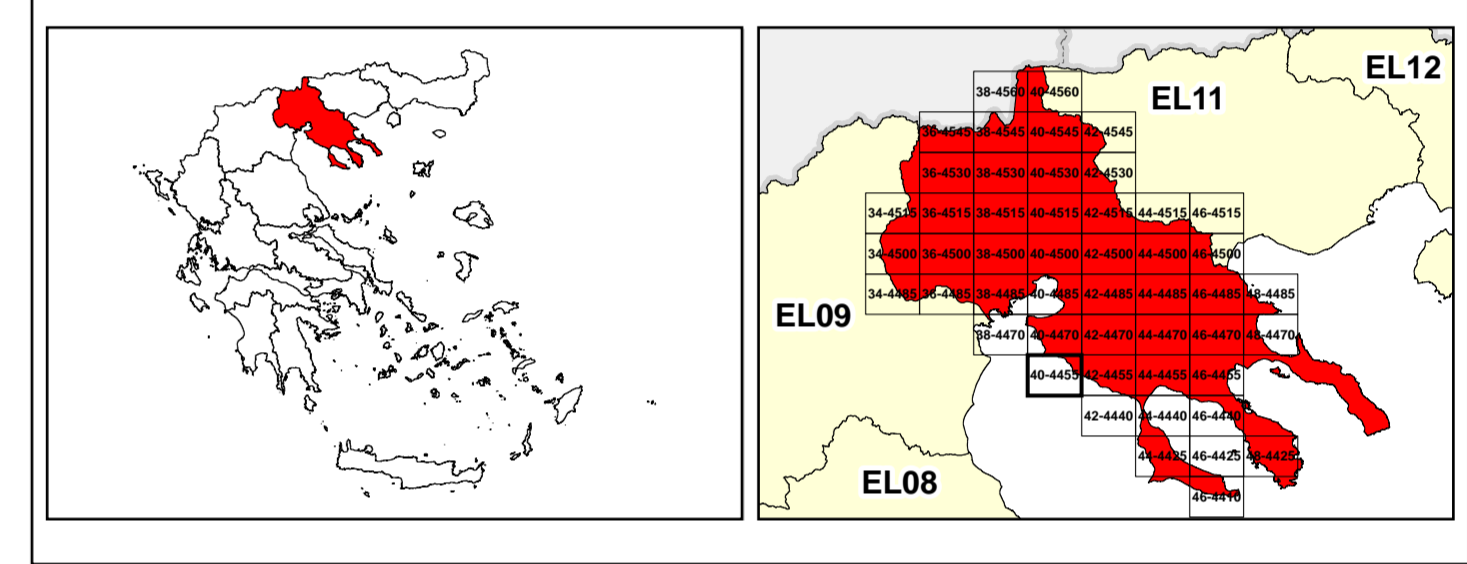
SECONDARY-TERTIARY PROVINCIAL ROAD NETWORK

RAILWAY LINE

0 1 2 km

GGRS 87 QUADRATURE PER 2.500 M.

2022. (1) 15.414.842000



1

μ μ (EL10)

1° - 7

=100 - EL10APSF004

FLUVIAL FLOOD RISK MAP FOR RETURN PERIOD =100 YEARS - APSFR EL10APSF004

EL10-07-FRSK-100-025-40-4455-02	1:25.000
23-12-2023	2.0

/ &

NERCO -