

/LEGEND

LANDUSE - ECONOMIC ACTIVITIES - CULTURAL HERITAGE (within flood zone)

- / HOSPITAL**
- CLINICS-HEALTH UNITS**
- / EDUCATION**
- FACILITIES**
- / CULTURAL HERITAGE MONUMENTS**
- CIVIL PROTECTION FACILITIES**
- LIVESTOCK HOLDINGS**
- / ENERGY STATIONS- STATIONS (SHPP)**
- WATER SUPPLY BOREHOLES- WATER SOURCES**
- WASTE WATER TREATMENT PLANT**
 - <10,000
 - 10,000-100,000
 - >100,000
- / INDUSTRIES**
 - IPPC
 - SEVESO
 - IED
 - OTHER UNITS
- INDICATIVE AFFECTED POPULATION**
 - < 500
 - 500 - 2000
 - > 2000
- HERITANCE SITES**
- INDUSTRIAL SITES**
- / LANDFILL**
- AREAS / DEVELOPED TOURIST**
- AREAS / DEVELOPING TOURIST**
- / RICE CROP**
- / GREEN HOUSES**
- / OTHER**
- CROPS**
- PORT**
- FLOOD ZONE T=1000 YEARS**
- PROTECTED AREAS OF 2000/60/EC DIRECTIVE**
 - / SITE OF COMMUNITY IMPORTANCE
 - / SITE OF COMMUNITY IMPORTANCE AND SPECIAL PROTECTION AREAS
 - / SPECIAL PROTECTION AREAS
 - / WATER SYSTEMS IDENTIFIED AS RECREATIONAL WATER

BOUNDARIES OF NEIGHBORING STATES

- RIVER BASIN DISTRICT EL10
- OTHER RIVER BASIN DISTRICTS
- / APSFR
- / STREAMS

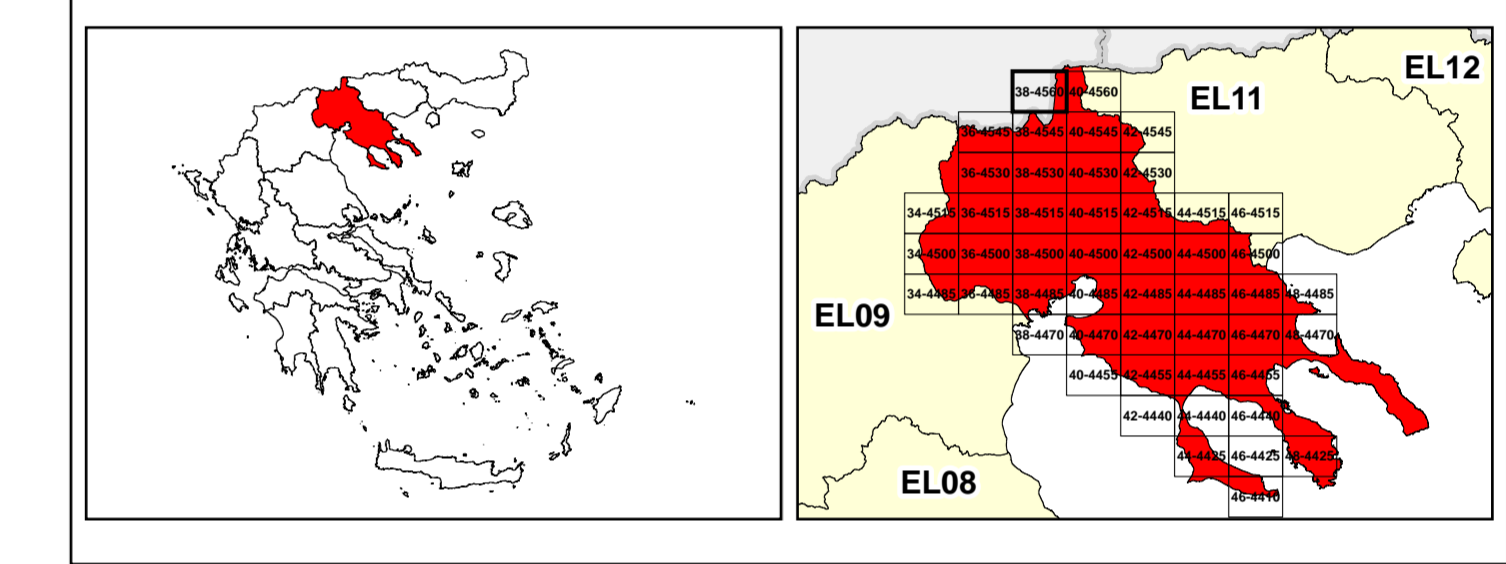
ROAD NETWORK

- MAJOR NATIONAL ROAD NETWORK
- / SECONDARY - TERTIARY NATIONAL ROAD NETWORK
- MAJOR PROVINCIAL ROAD NETWORK
- / SECONDARY-TERTIARY PROVINCIAL ROAD NETWORK
- / RAILWAY LINE

0 2.500 5.000 7.500 10.000 km

GGRS 87 QUADRATURE PER 2.500 M.

2022. (1) 15.467.8080m (



Logo of the Ministry of Environment, Space and Climate Change of North Macedonia.

1

μ μ (EL10)

1° - 7

=100 - EL10APFSR008

FLUVIAL FLOOD RISK MAP FOR RETURN PERIOD =100 YEARS - APSFR EL10APFSR008

EL10-07-FRSK-100-025-38-4560-02	1:25.000
23-12-2023	2.0

NERCO

Logo of the European Union.

Logo of the Ministry of Environment, Space and Climate Change of North Macedonia.

Logo of the Operational Program "Regional Development" 2014-2020.