

/LEGEND

LANDUSE - ECONOMIC ACTIVITIES - CULTURAL HERITAGE (within flood zone)

- HOSPITAL** (Red cross symbol)
- CLINICS-HEALTH UNITS** (Red circle with cross symbol)
- EDUCATION** (Red circle with book symbol)
- FACILITIES** (Red circle with building symbol)
- HERITAGE MONUMENTS** (Red circle with monument symbol)
- CIVIL PROTECTION FACILITIES** (Red circle with fire symbol)
- LIVESTOCK HOLDINGS** (Red circle with cow symbol)
- ENERGY STATIONS- STATIONS (SHPP)** (Red circle with lightning bolt symbol)
- WATER SUPPLY BOREHOLES- WATER SOURCES** (Red circle with water tap symbol)
- WASTE WATER TREATMENT PLANT** (Blue circle with water drop symbol)
- INDUSTRIES** (Red circle with factory symbol)
- IPPC** (Red circle with factory symbol)
- SEVESO** (Red circle with hazard symbol)
- IED** (Red circle with bomb symbol)
- OTHER UNITS** (Red circle with hazard symbol)
- INDICATIVE AFFECTED POPULATION**
 - < 500 (Pink circle)
 - 500 - 2000 (Pink circle with 500-2000)
 - > 2000 (Pink circle with 500-2000)
- HERITAGE SITES** (Yellow rectangle)
- INDUSTRIAL SITES** (Purple rectangle)
- LANDFILL** (Green rectangle with cross-hatch)
- AREAS / DEVELOPED TOURIST** (Orange rectangle)
- AREAS / DEVELOPING TOURIST** (Light orange rectangle)
- AREAS / RICE CROP** (Yellow rectangle)
- AREAS / GREEN HOUSES** (Light green rectangle)
- CROPS / OTHER** (Light green rectangle)
- PORT** (Blue rectangle)
- FLOOD ZONE T=1000 YEARS** (Blue rectangle with cross-hatch)

PROTECTED AREAS OF 2000/60/EC DIRECTIVE

- SC: IMPORTANCE** (Green dashed line)
- SPA: AREAS** (Red dashed line)
- SCISPA: SITE OF COMMUNITY IMPORTANCE AND SPECIAL PROTECTION AREAS** (Purple dashed line)
- SPECIAL PROTECTION AS RECREATIONAL WATER** (Blue dashed line)
- WATER SYSTEMS IDENTIFIED** (Blue solid line)

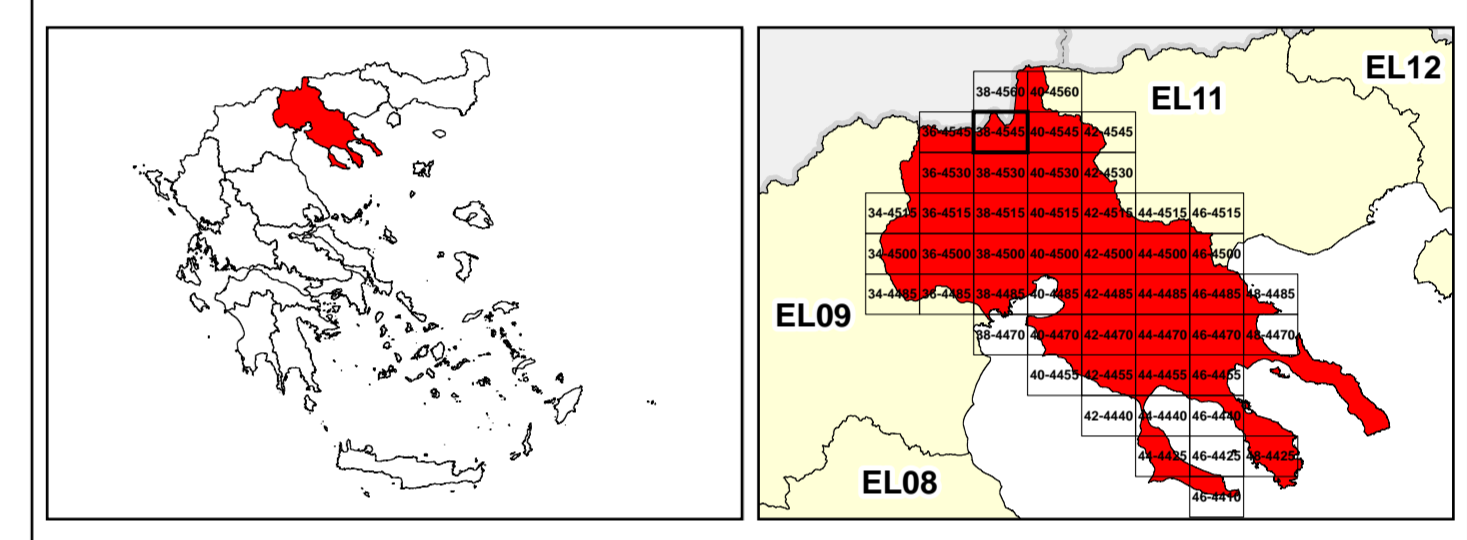
BOUNDARIES OF NEIGHBORING STATES

- RIVER BASIN DISTRICT EL10** (Black dashed line)
- OTHER RIVER BASIN DISTRICTS** (Black dotted line)
- APSFR** (Black dashed line)
- STREAMS** (Blue line)

ROAD NETWORK

- MAJOR NATIONAL ROAD NETWORK** (Thick black line)
- SECONDARY - TERTIARY NATIONAL ROAD NETWORK** (Thin black line)
- MAJOR PROVINCIAL ROAD NETWORK** (Red line)
- SECONDARY-TERTIARY PROVINCIAL ROAD NETWORK** (Thin red line)
- RAILWAY LINE** (Black line with cross-ticks)

Scale: 0 to 2,500 M. GGRS 87 QUADRATURE PER 2.500 M.



Logo of the Ministry of Environment, Water and Forestry of North Macedonia.

1

μ μ (EL10)
1° - 7
=100 - EL10APSFR008
FLUVIAL FLOOD RISK MAP FOR RETURN PERIOD =100 YEARS - APSFR EL10APSFR008

EL10-07-FRSK-100-025-38-4545-02	1:25.000
23-12-2023	2.0

NERCO logo

Logo of the European Union

Logo of the Ministry of Environment, Water and Forestry of North Macedonia (ΕΣΠΑ 2014-2020)