

**/LEGEND**

**LANDUSE - ECONOMIC ACTIVITIES - CULTURAL HERITAGE (within flood zone)**

- / HOSPITAL
- CLINICS-HEALTH UNITS
- / EDUCATION
- FACILITIES
- / CULTURAL HERITAGE MONUMENTS
- CIVIL PROTECTION FACILITIES
- LIVESTOCK HOLDINGS
- / ENERGY STATIONS-
- / SMALL HYDROPOWER STATIONS (SHPP)
- WATER SUPPLY BOREHOLES- WATER SOURCES

**WASTE WATER TREATMENT PLANT**

- <10,000
- 10,000-100,000
- >100,000

**/ INDUSTRIES**

- IPPC
- SEVESO
- IED
- OTHER UNITS

**INDICATIVE AFFECTED POPULATION**

- < 500
- 500 - 2000
- > 2000

**PROTECTED AREAS OF 2000/60/EC DIRECTIVE**

- / SITE OF COMMUNITY IMPORTANCE AND SPECIAL PROTECTION AREAS
- / SPECIAL PROTECTION AS RECREATIONAL WATER
- / WATER SYSTEMS IDENTIFIED

**BOUNDARIES OF NEIGHBORING STATES**

- RIVER BASIN DISTRICT EL10
- OTHER RIVER BASIN DISTRICTS
- / APSFR
- / STREAMS

**ROAD NETWORK**

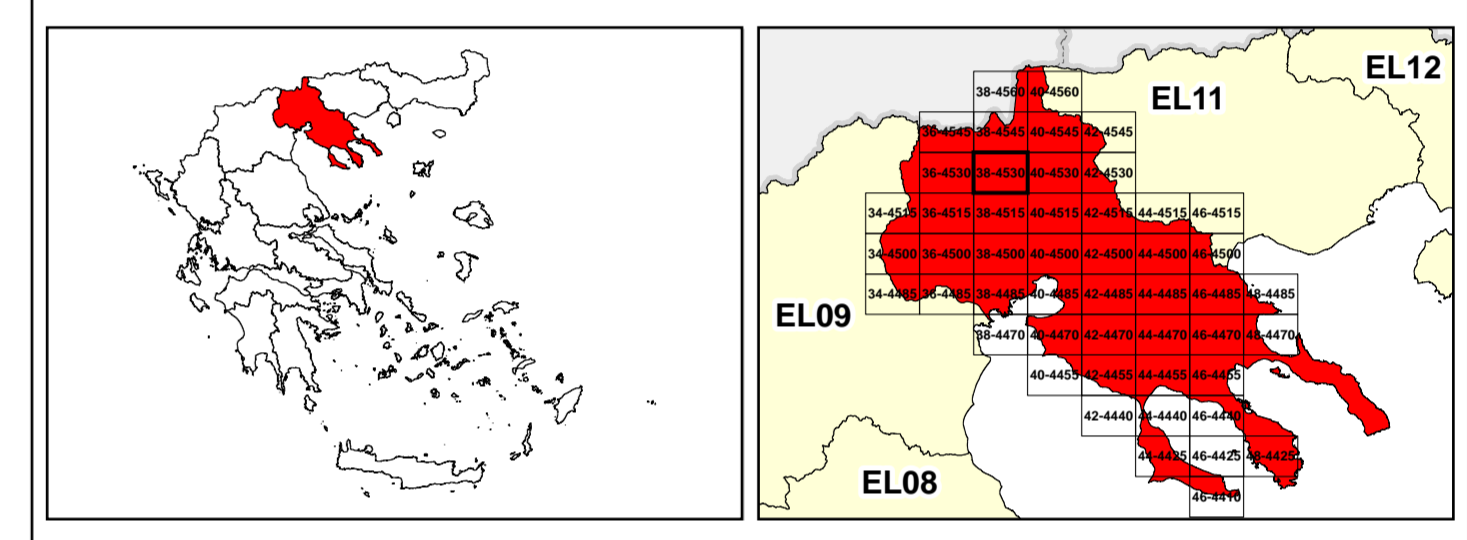
- MAJOR NATIONAL ROAD NETWORK
- / SECONDARY - TERTIARY NATIONAL ROAD NETWORK
- MAJOR PROVINCIAL ROAD NETWORK
- / SECONDARY-TERTIARY PROVINCIAL ROAD NETWORK
- / RAILWAY LINE

0 100 200 300 400 500 600 700 800 900 1000

GGRS 87 QUADRATURE PER 2.500 M.

2022.

(1) 253-449-8200m (



&

1

μ μ (EL10)

1° - 7

=100 - EL10APSR008

**FLUVIAL FLOOD RISK MAP FOR RETURN PERIOD =100 YEARS - APSFR EL10APSR008**

EL10-07-FRSK-100-025-38-4530-02	1:25.000
23-12-2023	2.0

NERCO -