

**/LEGEND**

**LANDUSE - ECONOMIC ACTIVITIES - CULTURAL HERITAGE (within flood zone)**

- / HOSPITAL
- CLINICS-HEALTH UNITS
- / EDUCATION
- FACILITIES
- / CULTURAL HERITAGE MONUMENTS
- CIVIL PROTECTION FACILITIES
- LIVESTOCK HOLDINGS
- / ENERGY STATIONS- STATIONS (SHPP)
- WATER SUPPLY BOREHOLES- WATER SOURCES

**WASTE WATER TREATMENT PLANT**

- <10,000
- 10,000-100,000
- >100,000

**/ INDUSTRIES**

- IPPC
- SEVESO
- IED
- OTHER UNITS

**INDICATIVE AFFECTED POPULATION**

- < 500
- 500 - 2000
- > 2000

**HERITANCE SITES**

- INDUSTRIAL SITES
- LANDFILL
- AREAS / DEVELOPED TOURIST
- AREAS / DEVELOPING TOURIST
- RICE CROP
- GREEN HOUSES
- CROPS
- OTHER
- PORT
- FLOOD ZONE T=1000 YEARS

**PROTECTED AREAS OF 2000/60/EC DIRECTIVE**

- / SITE OF COMMUNITY IMPORTANCE
- / SITE OF COMMUNITY IMPORTANCE AND SPECIAL PROTECTION AREAS
- / SPECIAL PROTECTION AS RECREATIONAL WATER
- / WATER SYSTEMS IDENTIFIED

**BOUNDARIES OF NEIGHBORING STATES**

- RIVER BASIN DISTRICT EL10
- OTHER RIVER BASIN DISTRICTS
- APFSR
- STREAMS

**ROAD NETWORK**

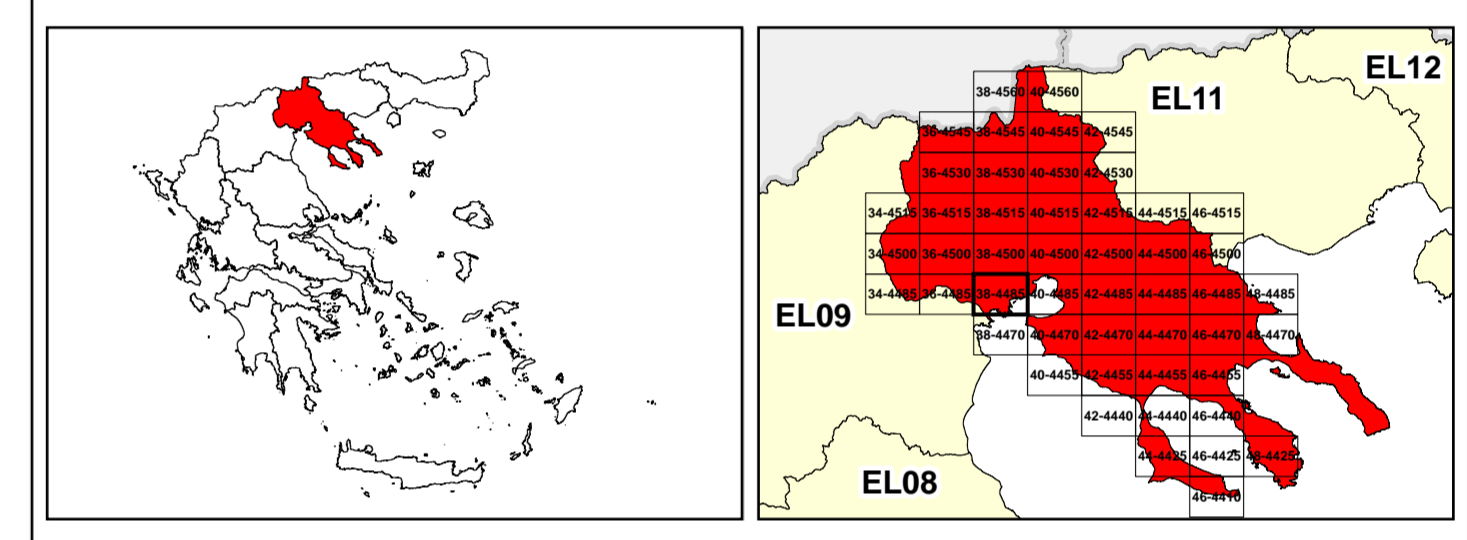
- MAJOR NATIONAL ROAD NETWORK
- SECONDARY - TERTIARY NATIONAL ROAD NETWORK
- MAJOR PROVINCIAL ROAD NETWORK
- SECONDARY-TERTIARY PROVINCIAL ROAD NETWORK
- RAILWAY LINE

0 1 2 3 4 5 6 7 8 9 10 km

GGRS 87 QUADRATURE PER 2.500 M.

2022.

48N, (3) 22 964 38350N ( 48N, (2) 263 449 62000E ( (1) 201 207 66500E (



Logo of the Ministry of Environment, Energy and Climate Change of the Republic of Bulgaria.

1

μ μ (EL10)

1° - 7

=100 - EL10APFSR008

**FLUVIAL FLOOD RISK MAP FOR RETURN PERIOD =100 YEARS - APFSR EL10APFSR008**

EL10-07-FRSK-100-025-38-4485-02	1:25.000
23-12-2023	2.0

Logo of NERCO (National Environmental Research and Innovation Center for Complex Systems).

Logo of the European Union.

Logo of the Operational Program "Regional Development" 2014-2020.