

/LEGEND

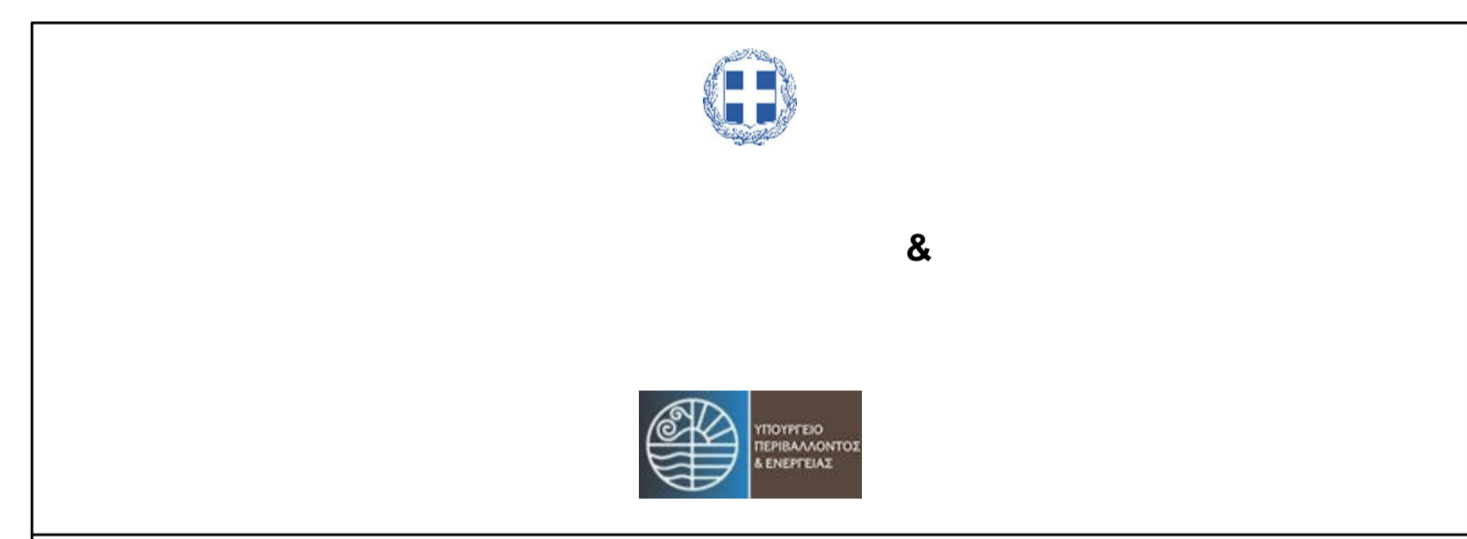
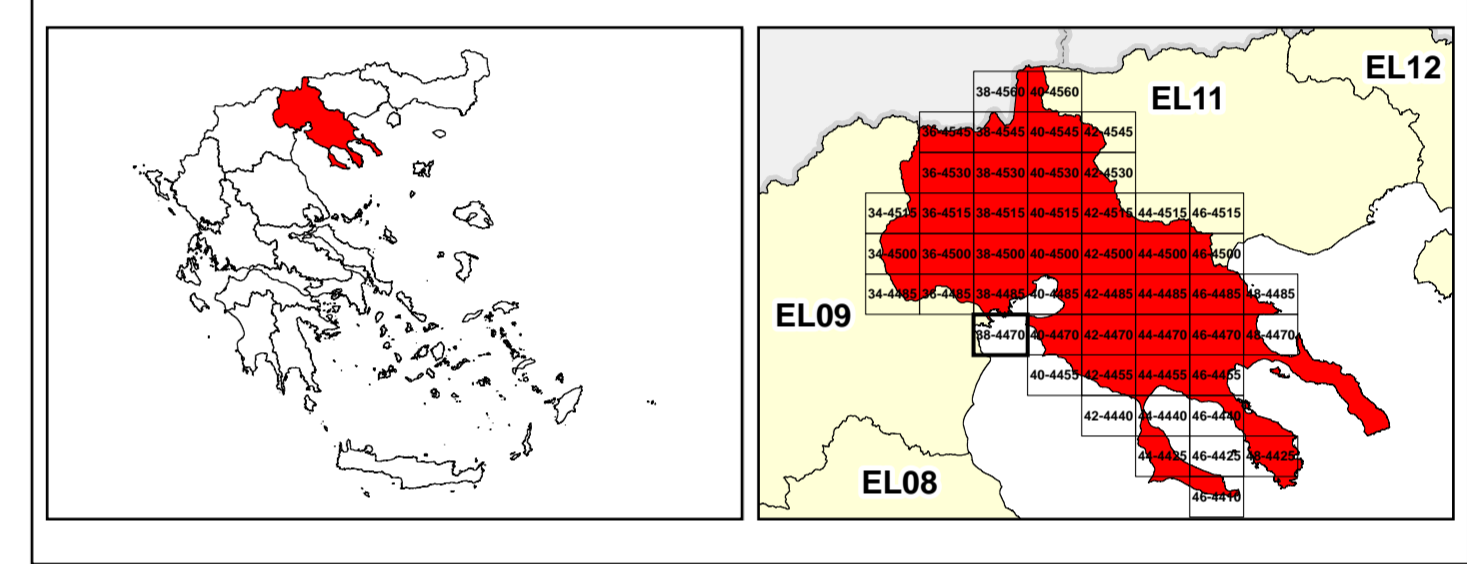
LANDUSE - ECONOMIC ACTIVITIES - CULTURAL HERITAGE (within flood zone)

	/ HOSPITAL		WASTE WATER TREATMENT PLANT		/ CULTURAL HERITANCE SITES
	CLINICS-HEALTH UNITS		10,000-100,000		INDUSTRIAL SITES
	/ EDUCATION		>100,000		/ LANDFILL
	/ FACILITIES		/ INDUSTRIES		/ DEVELOPED TOURIST AREAS
	HERITANCE MONUMENTS		IPPC		/ DEVELOPING TOURIST AREAS
	CIVIL PROTECTION FACILITIES		SEVESO		/ RICE CROP
	LIVESTOCK HOLDINGS		IED		/ GREEN HOUSES
	/ ENERGY STATIONS		OTHER UNITS		/ CROPS
	/ SMALL HYDROPOWER STATIONS (SHP)	INDICATIVE AFFECTED POPULATION			/ PORT
	WATER SUPPLY BOREHOLES- WATER SOURCES		< 500		/ FLOOD ZONE T=1000 YEARS
			500 - 2000		
			> 2000		
	SC: IMPORTANCE		PROTECTED AREAS OF 2000/60/EC DIRECTIVE		/ SITE OF COMMUNITY IMPORTANCE AND SPECIAL PROTECTION AREAS
	SPA: AREAS		/ SPECIAL PROTECTION AREAS		/ WATER SYSTEMS IDENTIFIED AS RECREATIONAL WATER
	BOUNDARIES OF NEIGHBORING STATES		/ ROAD NETWORK		
	RIVER BASIN DISTRICT EL10		MAJOR NATIONAL ROAD NETWORK		
	OTHER RIVER BASIN DISTRICTS		/ SECONDARY - TERTIARY NATIONAL ROAD NETWORK		
	/ APSFR		MAJOR PROVINCIAL ROAD NETWORK		
	/ STREAMS		/ SECONDARY-TERTIARY PROVINCIAL ROAD NETWORK		
			/ RAILWAY LINE		

GGRS 87 QUADRATURE PER 2.500 M.

0 2.500 5000

2022. (1) 253.449.820ton (



1

μ μ (EL10)

1° - 7

=100 - EL10APSFR008

FLUVIAL FLOOD RISK MAP FOR RETURN PERIOD =100 YEARS - APSFR EL10APSFR008

EL10-07-FRSK-100-025-38-4470-02	1:25.000
23-12-2023	2.0

/ &

NERCO -

μ