



/LEGEND

LANDUSE - ECONOMIC ACTIVITIES - CULTURAL HERITAGE (within flood zone)

/ HOSPITAL	WASTE WATER TREATMENT PLANT	/ CULTURAL HERITANCE SITES
CLINICS-HEALTH UNITS	<10,000	INDUSTRIAL SITES
/ EDUCATION	10,000-100,000	LANDFILL
/ FACILITIES	>100,000	/ INDUSTRIES
/ CULTURAL HERITANCE MONUMENTS	IPPC	/ DEVELOPED TOURIST AREAS
CIVIL PROTECTION FACILITIES	SEVESO	/ DEVELOPING TOURIST AREAS
LIVESTOCK HOLDINGS	IED	/ RICE CROP
/ ENERGY STATIONS- STATIONS (SHP)	OTHER UNITS	/ GREEN HOUSES
/ SMALL HYDROPOWER STATIONS (SHP)	INDICATIVE AFFECTED POPULATION	CROPS
WATER SUPPLY BOREHOLES- WATER SOURCES	< 500	PORT
	500 - 2000	AIRPORT
	> 2000	FLOOD ZONE T=1000 YEARS
SCIP: IMPORTANCE	PROTECTED AREAS OF 2000/60/EC DIRECTIVE	/ SITE OF COMMUNITY IMPORTANCE AND SPECIAL PROTECTION AREAS
SPA: AREAS	/ SPECIAL PROTECTION AREAS	/ WATER SYSTEMS IDENTIFIED AS RECREATIONAL WATER

BOUNDARIES OF NEIGHBORING STATES

RIVER BASIN DISTRICT EL10

OTHER RIVER BASIN DISTRICTS

APSF

STREAMS

ROAD NETWORK

MAJOR NATIONAL ROAD NETWORK

SECONDARY - TERTIARY NATIONAL ROAD NETWORK

MAJOR PROVINCIAL ROAD NETWORK

SECONDARY-TERTIARY PROVINCIAL ROAD NETWORK

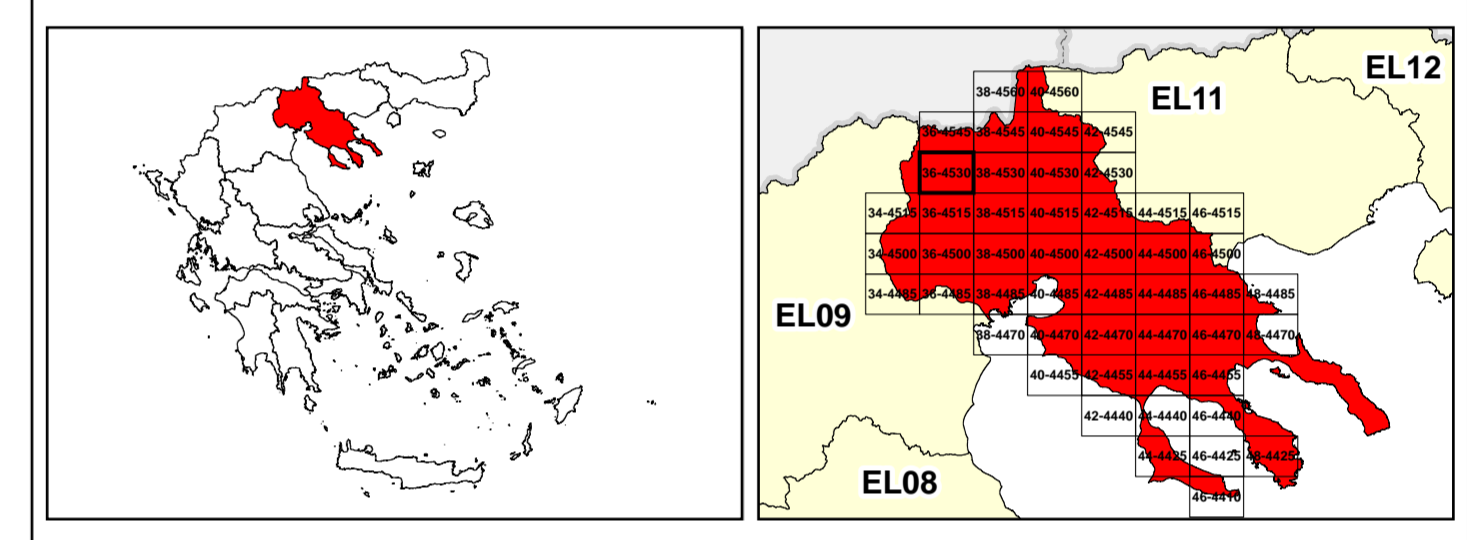
RAILWAY LINE

0 87 2.500

GGRS 87 QUADRATURE PER 2.500 M.

2022

(1) 253-449-8200m



&

1

μ μ (EL10)

1° - 7

=100 - EL10APSF008

FLUVIAL FLOOD RISK MAP FOR RETURN PERIOD =100 YEARS - APSFR EL10APSF008

EL10-07-FRSK-100-025-36-4530-02	1:25.000
23-12-2023	2.0

/

&

NERCO