



**/LEGEND**

**LANDUSE - ECONOMIC ACTIVITIES - CULTURAL HERITAGE (within flood zone)**

- / HOSPITAL** (Icon)
- CLINICS-HEALTH UNITS** (Icon)
- / EDUCATION** (Icon)
- FACILITIES** (Icon)
- / CULTURAL HERITAGE MONUMENTS** (Icon)
- CIVIL PROTECTION FACILITIES** (Icon)
- LIVESTOCK HOLDINGS** (Icon)
- / ENERGY STATIONS- STATIONS (SHP)** (Icon)
- WATER SUPPLY BOREHOLES- WATER SOURCES** (Icon)
- WASTE WATER TREATMENT PLANT** (Icon)
- / INDUSTRIES** (Icon)
- IPPC** (Icon)
- SEVESO** (Icon)
- IED** (Icon)
- OTHER UNITS** (Icon)
- INDICATIVE AFFECTED POPULATION** (Icon)
- PROTECTED AREAS OF 2000/60/EC DIRECTIVE** (Icon)
- / SITE OF COMMUNITY IMPORTANCE** (Icon)
- SCISPA: / SITE OF COMMUNITY IMPORTANCE AND SPECIAL PROTECTION AREAS** (Icon)
- SPA: / SPECIAL PROTECTION AREAS** (Icon)
- AS RECREATIONAL WATER** (Icon)
- AS RECREATIONAL WATER** (Icon)
- HERITAGE SITES** (Icon)
- INDUSTRIAL SITES** (Icon)
- / LANDFILL** (Icon)
- AREAS / DEVELOPED TOURIST** (Icon)
- AREAS / DEVELOPING TOURIST** (Icon)
- / RICE CROP** (Icon)
- / GREEN HOUSES** (Icon)
- / OTHER** (Icon)
- CROPS** (Icon)
- PORT** (Icon)
- / AIRPORT** (Icon)
- FLOOD ZONE T=1000 YEARS** (Icon)

**BOUNDARIES OF NEIGHBORING STATES**

- RIVER BASIN DISTRICT EL10** (Icon)
- OTHER RIVER BASIN DISTRICTS** (Icon)
- / APSFR** (Icon)
- / STREAMS** (Icon)

**ROAD NETWORK**

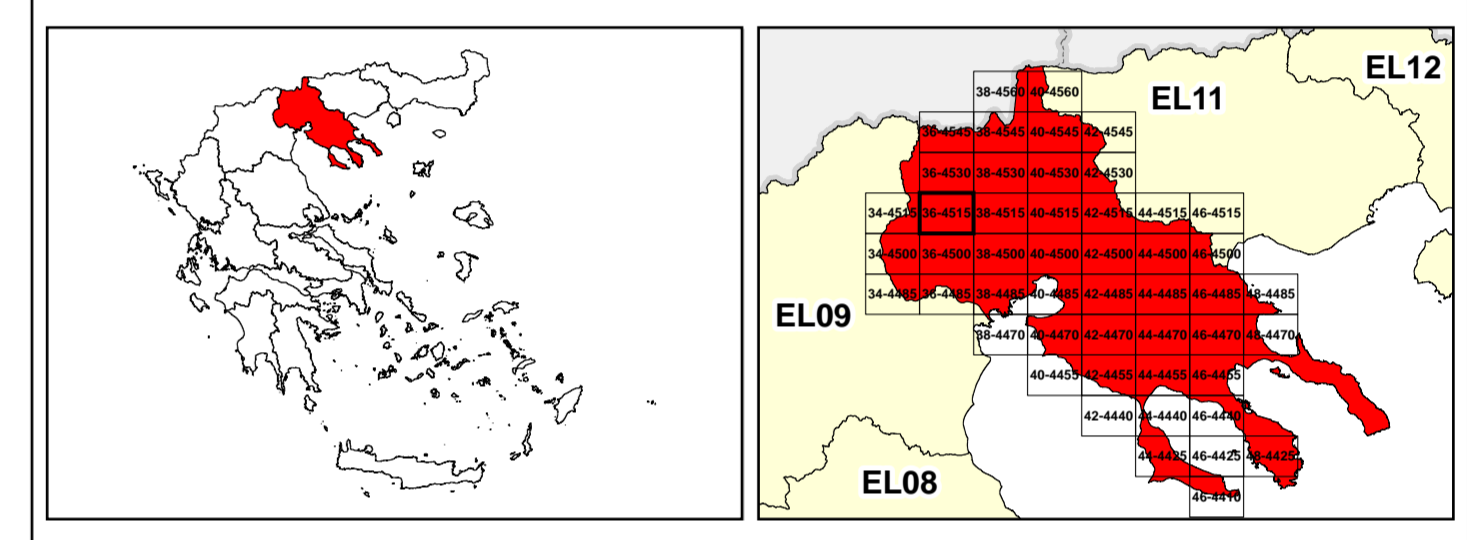
- MAJOR NATIONAL ROAD NETWORK** (Icon)
- / SECONDARY - TERTIARY NATIONAL ROAD NETWORK** (Icon)
- MAJOR PROVINCIAL ROAD NETWORK** (Icon)
- / SECONDARY-TERTIARY PROVINCIAL ROAD NETWORK** (Icon)
- / RAILWAY LINE** (Icon)



0 87 2.500 km

GGRS 87 QUADRATURE PER 2.500 M.

2022.

48hr. (2) 201.207.666ton ( (1) 263.449.820ton (




  
 &
   


1

μ μ (EL10)

1° - 7

=100 - EL10APSFR008

**FLUVIAL FLOOD RISK MAP FOR RETURN PERIOD =100 YEARS - APSFR EL10APSFR008**

EL10-07-FRSK-100-025-36-4515-02	1:25.000
23-12-2023	2.0

/ &

NERCO -

