

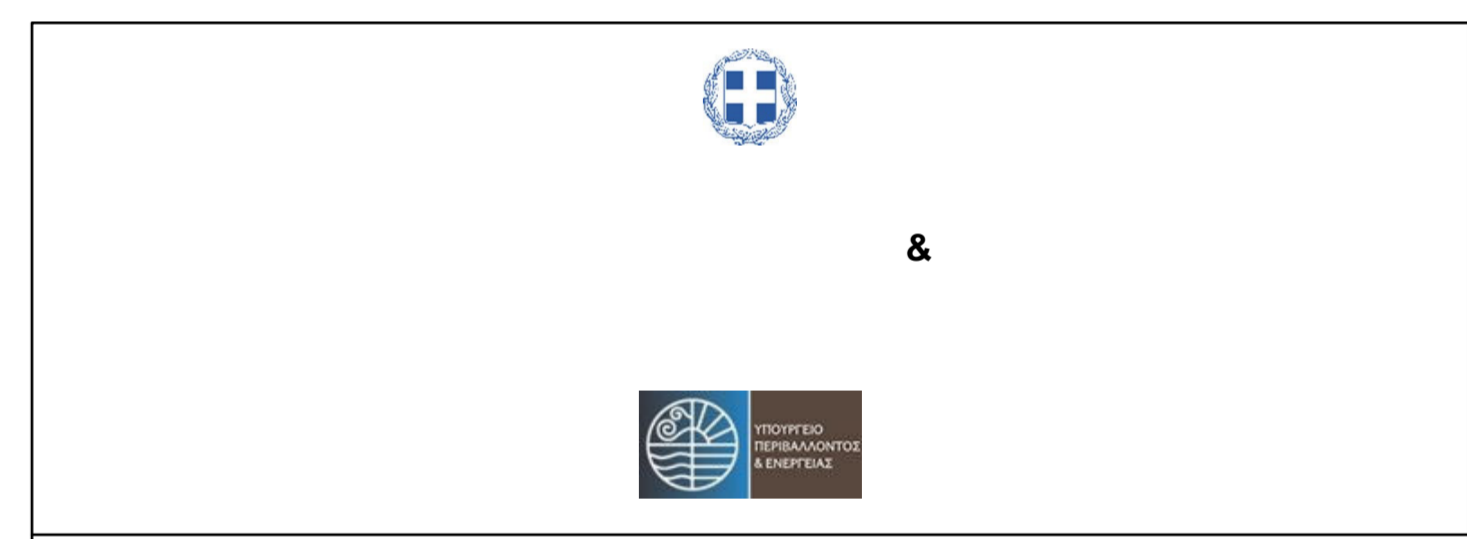
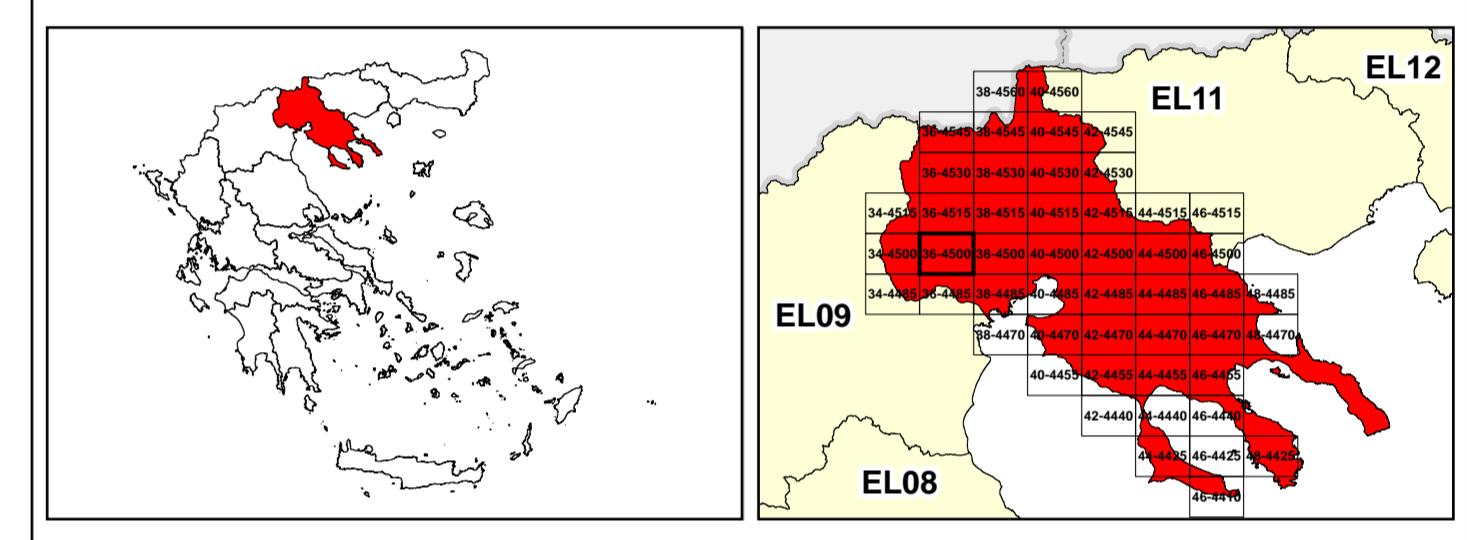
/LEGEND

LANDUSE - ECONOMIC ACTIVITIES - CULTURAL HERITAGE (within flood zone)

- WASTE WATER TREATMENT PLANT**
 - <10,000
 - 10,000-100,000
 - >100,000
- INDUSTRIES**
 - IPPC
 - SEVESO
 - IED
 - OTHER UNITS
- INDICATIVE AFFECTED POPULATION**
 - < 500
 - 500 - 2000
 - > 2000
- PROTECTED AREAS OF 2000/60/EC DIRECTIVE**
 - SC: IMPORTANCE
 - SPA: AREAS
 - SCISPA: SITE OF COMMUNITY IMPORTANCE AND SPECIAL PROTECTION AREAS
 - AS RECREATIONAL WATER
- HERITANCE SITES**
 - CULTURAL
 - INDUSTRIAL SITES
 - LANDFILL
 - AREAS / DEVELOPED TOURIST
 - AREAS / DEVELOPING TOURIST
 - RICE CROP
 - GREEN HOUSES
 - CROPS
 - OTHER
 - PORT
 - FLOOD ZONE T=1000 YEARS
- ROAD NETWORK**
 - MAJOR NATIONAL ROAD NETWORK
 - SECONDARY - TERTIARY NATIONAL ROAD NETWORK
 - MAJOR PROVINCIAL ROAD NETWORK
 - SECONDARY-TERTIARY PROVINCIAL ROAD NETWORK
 - RAILWAY LINE
- BOUNDARIES OF NEIGHBORING STATES**
 - RIVER BASIN DISTRICT EL10
 - OTHER RIVER BASIN DISTRICTS
 - APSR
 - STREAMS

0 87 2.500 km
GGRS 87 QUADRATURE PER 2.500 M.

2022. (1) 201.207.66500 (



1

μ μ (EL10)

1° - 7

=100 - EL10APSR008

FLUVIAL FLOOD RISK MAP FOR RETURN PERIOD =100 YEARS - APSFR EL10APSR008

EL10-07-FRSK-100-025-36-4500-02	1:25.000
23-12-2023	2.0

/ &

NERCO