



**/LEGEND**

**LANDUSE - ECONOMIC ACTIVITIES - CULTURAL HERITAGE (within flood zone)**

- / HOSPITAL** (Symbol)
- CLINICS-HEALTH UNITS** (Symbol)
- / EDUCATION** (Symbol)
- FACILITIES** (Symbol)
- / CULTURAL HERITAGE MONUMENTS** (Symbol)
- CIVIL PROTECTION FACILITIES** (Symbol)
- LIVESTOCK HOLDINGS** (Symbol)
- / ENERGY STATIONS- STATIONS (SHPP)** (Symbol)
- WATER SUPPLY BOREHOLES- WATER SOURCES** (Symbol)
- WASTE WATER TREATMENT PLANT** (Symbol)
- / INDUSTRIES** (Symbol)
- IPPC** (Symbol)
- SEVESO** (Symbol)
- IED** (Symbol)
- OTHER UNITS** (Symbol)
- INDICATIVE AFFECTED POPULATION** (Symbol)
- PROTECTED AREAS OF 2000/60/EC DIRECTIVE** (Symbol)
- SC: IMPORTANCE** (Symbol)
- SPA: AREAS** (Symbol)
- HERITAGE SITES** (Symbol)
- INDUSTRIAL SITES** (Symbol)
- / LANDFILL** (Symbol)
- AREAS / DEVELOPED TOURIST** (Symbol)
- AREAS / DEVELOPING TOURIST** (Symbol)
- / RICE CROP** (Symbol)
- / GREEN HOUSES** (Symbol)
- CROPS** (Symbol)
- / OTHER** (Symbol)
- PORT** (Symbol)
- / AIRPORT** (Symbol)
- FLOOD ZONE T=1000 YEARS** (Symbol)
- AS RECREATIONAL WATER** (Symbol)
- AS RECREATIONAL WATER** (Symbol)

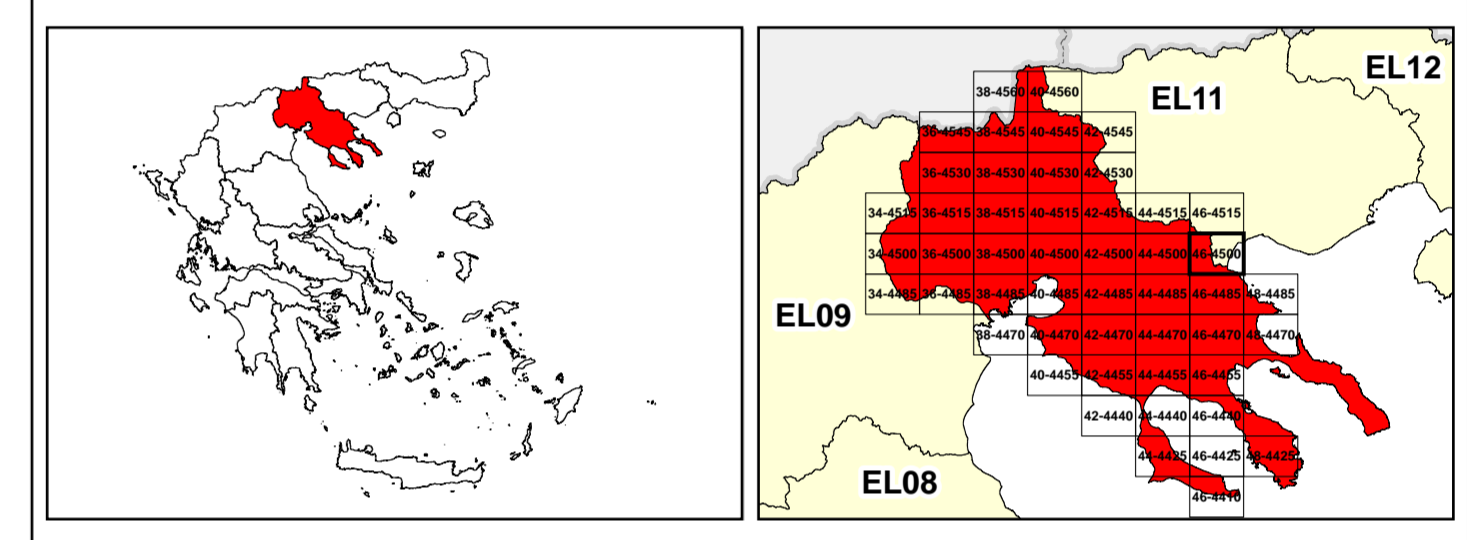
**BOUNDARIES OF NEIGHBORING STATES**

- RIVER BASIN DISTRICT EL10** (Symbol)
- OTHER RIVER BASIN DISTRICTS** (Symbol)
- / APSFR** (Symbol)
- / STREAMS** (Symbol)

**ROAD NETWORK**

- MAJOR NATIONAL ROAD NETWORK** (Symbol)
- / SECONDARY - TERTIARY NATIONAL ROAD NETWORK** (Symbol)
- MAJOR PROVINCIAL ROAD NETWORK** (Symbol)
- / SECONDARY-TERTIARY PROVINCIAL ROAD NETWORK** (Symbol)
- / RAILWAY LINE** (Symbol)

Scale: 0 to 2.500 M. GGRS 87 QUADRATURE PER 2.500 M.



Logo of the Ministry of Environment, Energy and Climate Change of Greece.

1

μ μ (EL10)

1° - 7

=50 - EL10APSF006

**FLUVIAL FLOOD RISK MAP FOR RETURN PERIOD =50 YEARS - APSFR EL10APSF006**

EL10-07-FRSK-050-025-46-4500-02	1:25.000
23-12-2023	2.0

NERCO

Logo of the European Union.

Logo of NSRF (ΕΣΠΑ) 2014-2020.