



/LEGEND

LANDUSE - ECONOMIC ACTIVITIES - CULTURAL HERITAGE (within flood zone)

- / HOSPITAL** (Icon)
- CLINICS-HEALTH UNITS** (Icon)
- / EDUCATION** (Icon)
- FACILITIES** (Icon)
- / CULTURAL HERITAGE MONUMENTS** (Icon)
- CIVIL PROTECTION FACILITIES** (Icon)
- LIVESTOCK HOLDINGS** (Icon)
- / ENERGY STATIONS- STATIONS (SHP)** (Icon)
- WATER SUPPLY BOREHOLES- WATER SOURCES** (Icon)
- WASTE WATER TREATMENT PLANT** (Icon)
- / INDUSTRIES** (Icon)
- INDICATIVE AFFECTED POPULATION** (Icons for < 500, 500 - 2000, > 2000)
- PROTECTED AREAS OF 2000/60/EC DIRECTIVE** (Icon)
- SC: IMPORTANCE** (Icon)
- SPA: AREAS** (Icon)
- HERITAGE SITES** (Icon)
- INDUSTRIAL SITES** (Icon)
- / LANDFILL** (Icon)
- AREAS / DEVELOPED TOURIST** (Icon)
- AREAS / DEVELOPING TOURIST** (Icon)
- / RICE CROP** (Icon)
- / GREEN HOUSES** (Icon)
- CROPS** (Icon)
- PORT** (Icon)
- / AIRPORT** (Icon)
- FLOOD ZONE T=1000 YEARS** (Icon)
- PROTECTED AREAS OF 2000/60/EC DIRECTIVE** (Icon)
- SCISPA: / SITE OF COMMUNITY IMPORTANCE AND SPECIAL PROTECTION AREAS** (Icon)
- / SPECIAL PROTECTION AS RECREATIONAL WATER** (Icon)

BOUNDARIES OF NEIGHBORING STATES (Icon)

RIVER BASIN DISTRICT EL10 (Icon)

OTHER RIVER BASIN DISTRICTS (Icon)

/ APSFR (Icon)

/ STREAMS (Icon)

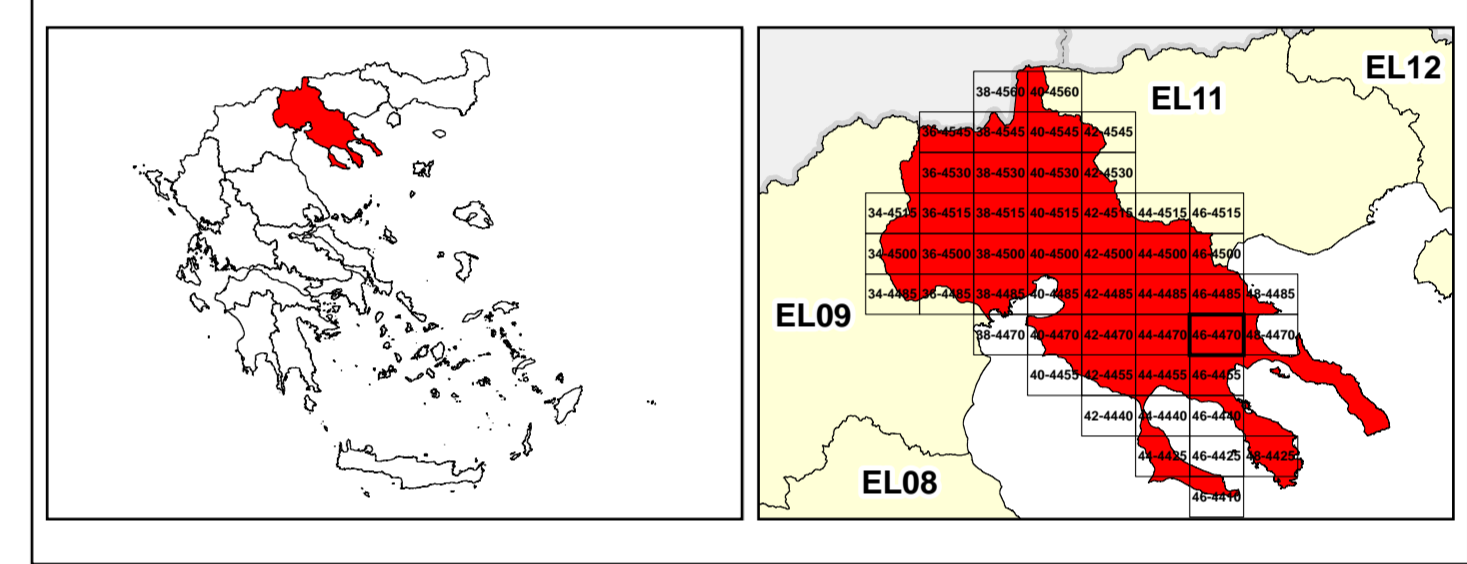
ROAD NETWORK

- MAJOR NATIONAL ROAD NETWORK** (Icon)
- / SECONDARY - TERTIARY NATIONAL ROAD NETWORK** (Icon)
- MAJOR PROVINCIAL ROAD NETWORK** (Icon)
- / SECONDARY-TERTIARY PROVINCIAL ROAD NETWORK** (Icon)
- / RAILWAY LINE** (Icon)

0 2.500 5000 7500 10000

GGRS 87 QUADRATURE PER 2.500 M.

2022. (1) 80.884.2880m (



Logo of the Ministry of Environment, Energy and Climate Change of Greece.

Logo of the National Institute of Statistics (NSRF).

1

μ μ (EL10)

1° - 7

=50 - EL10APSF009

FLUVIAL FLOOD RISK MAP FOR RETURN PERIOD =50 YEARS - APSFR EL10APSF009

EL10-07-FRSK-050-025-46-4470-02	1:25.000
23-12-2023	2.0

Logo of NERCO.

Logo of the European Union.

Logo of NSRF 2014-2020.