



**/LEGEND**

**LANDUSE - ECONOMIC ACTIVITIES - CULTURAL HERITAGE (within flood zone)**

- / HOSPITAL
- CLINICS-HEALTH UNITS
- / EDUCATION
- / FACILITIES
- / CULTURAL HERITAGE MONUMENTS
- CIVIL PROTECTION FACILITIES
- LIVESTOCK HOLDINGS
- / ENERGY STATIONS- STATIONS (SHPP)
- WATER SUPPLY BOREHOLES- WATER SOURCES
- WASTE WATER TREATMENT PLANT
  - <10,000
  - 10,000-100,000
  - >100,000
- IPPC
- SEVESO
- IED
- OTHER UNITS
- HERITAGE SITES
- INDUSTRIAL SITES
- LANDFILL
- / INDUSTRIES
- AREAS / DEVELOPED TOURIST
- AREAS / DEVELOPING TOURIST
- / RICE CROP
- / GREEN HOUSES
- CROPS
- / OTHER
- PORT
- AIRPORT
- FLOOD ZONE T=1000 YEARS

**INDICATIVE AFFECTED POPULATION**

- < 500
- 500 - 2000
- > 2000

**PROTECTED AREAS OF 2000/60/EC DIRECTIVE**

- SC: IMPORTANCE
- SPA: AREAS
- / SITE OF COMMUNITY IMPORTANCE AND SPECIAL PROTECTION AREAS
- / WATER SYSTEMS IDENTIFIED AS RECREATIONAL WATER

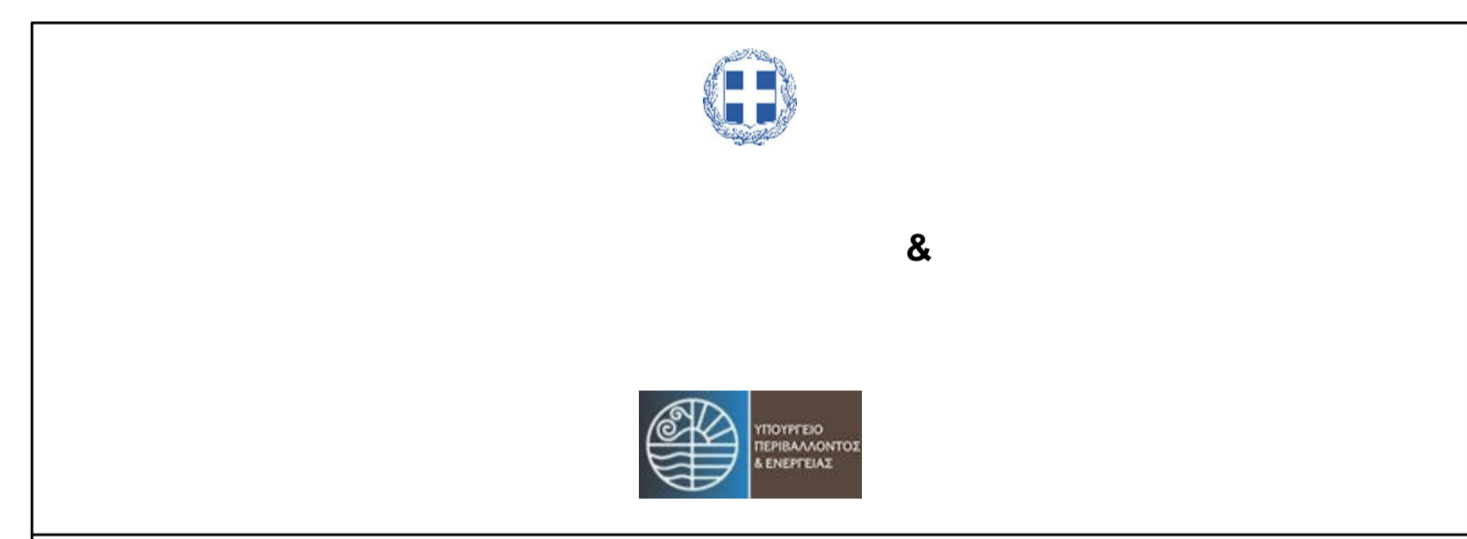
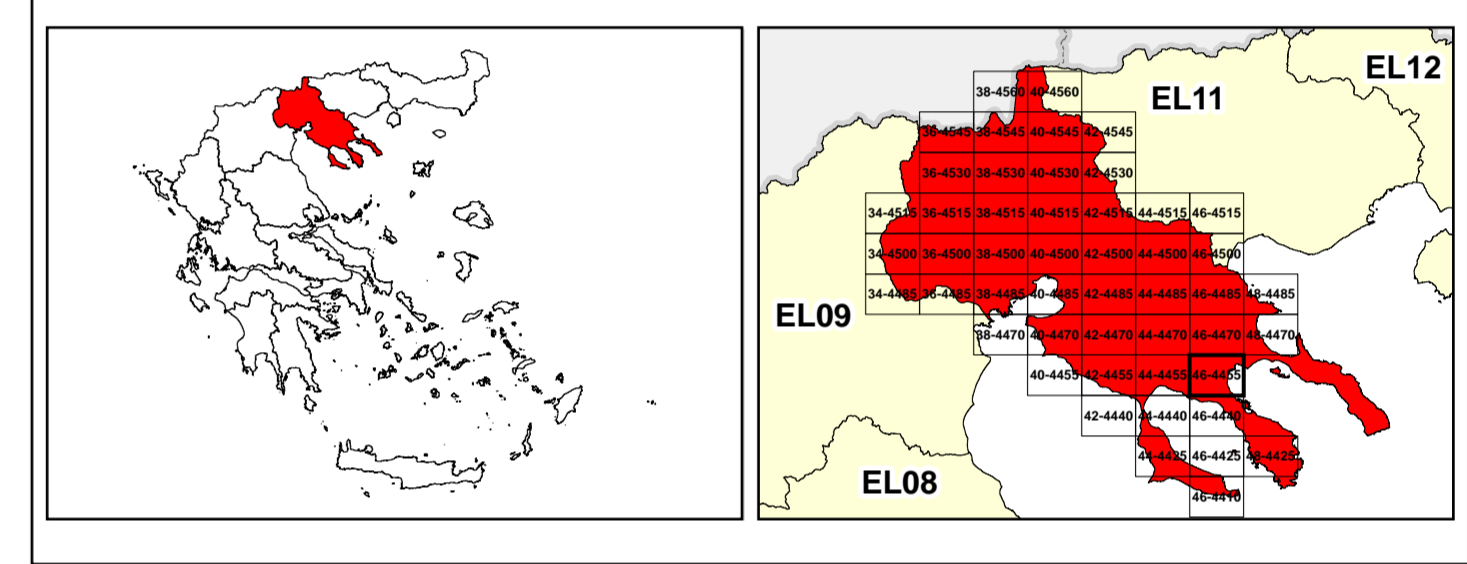
**BOUNDARIES OF NEIGHBORING STATES**

- RIVER BASIN DISTRICT EL10
- OTHER RIVER BASIN DISTRICTS
- / APSFR
- / STREAMS

**ROAD NETWORK**

- MAJOR NATIONAL ROAD NETWORK
- / SECONDARY - TERTIARY NATIONAL ROAD NETWORK
- MAJOR PROVINCIAL ROAD NETWORK
- / SECONDARY-TERTIARY PROVINCIAL ROAD NETWORK
- / RAILWAY LINE

Scale: 0 to 2,500 M. GGRS 87 QUADRATURE PER 2,500 M.



1

μ μ (EL10)

1° - 7

=50 - EL10APSR002 & EL10APSR009

**FLUVIAL FLOOD RISK MAP FOR RETURN PERIOD =50 YEARS - APSFR EL10APSR002 & EL10APSR009**

EL10-07-FRSK-050-025-46-4455-02	1:25.000
23-12-2023	2.0

NERCO