

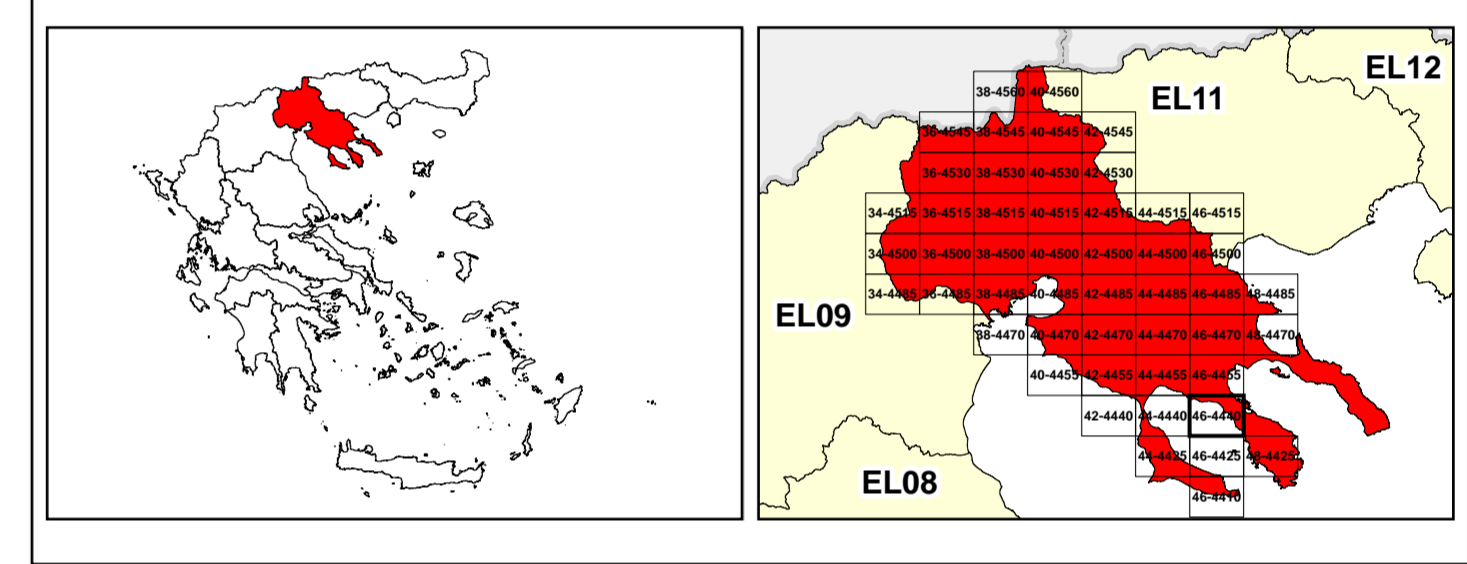


/LEGEND

LANDUSE - ECONOMIC ACTIVITIES - CULTURAL HERITAGE (within flood zone)

- / HOSPITAL
- CLINICS-HEALTH UNITS
- / EDUCATION
- FACILITIES
- / CULTURAL HERITAGE MONUMENTS
- CIVIL PROTECTION FACILITIES
- LIVESTOCK HOLDINGS
- / ENERGY STATIONS- STATIONS (SHPP)
- WATER SUPPLY BOREHOLES- WATER SOURCES
- WASTE WATER TREATMENT PLANT
- INDUSTRIES
- INDICATIVE AFFECTED POPULATION
- PROTECTED AREAS OF 2000/60/EC DIRECTIVE
- SC: IMPORTANCE
- SPA: AREAS
- BOUNDARIES OF NEIGHBORING STATES
- RIVER BASIN DISTRICT EL10
- OTHER RIVER BASIN DISTRICTS
- APSR
- STREAMS
- ROAD NETWORK
- MAJOR NATIONAL ROAD NETWORK
- SECONDARY - TERTIARY NATIONAL ROAD NETWORK
- MAJOR PROVINCIAL ROAD NETWORK
- SECONDARY-TERTIARY PROVINCIAL ROAD NETWORK
- RAILWAY LINE
- CULTURAL HERITAGE SITES
- INDUSTRIAL SITES
- LANDFILL
- DEVELOPED TOURIST AREAS
- DEVELOPING TOURIST AREAS
- RICE CROP
- GREEN HOUSES
- CROPS
- PORT
- FLOOD ZONE T=1000 YEARS
- SITE OF COMMUNITY IMPORTANCE AND SPECIAL PROTECTION AREAS
- SPECIAL PROTECTION AREAS
- WATER SYSTEMS IDENTIFIED AS RECREATIONAL WATER

Scale: 0 to 2,500 M. GGRS 87 QUADRATURE PER 2,500 M.



1

μ μ (EL10)

1° - 7

=50 - EL10APSR002 & EL10APSR009

FLUVIAL FLOOD RISK MAP FOR RETURN PERIOD =50 YEARS - APSFR EL10APSR002 & EL10APSR009

EL10-07-FRSK-050-025-46-4440-02	1:25.000
23-12-2023	2.0

/ &

NERCO -