

**/LEGEND**

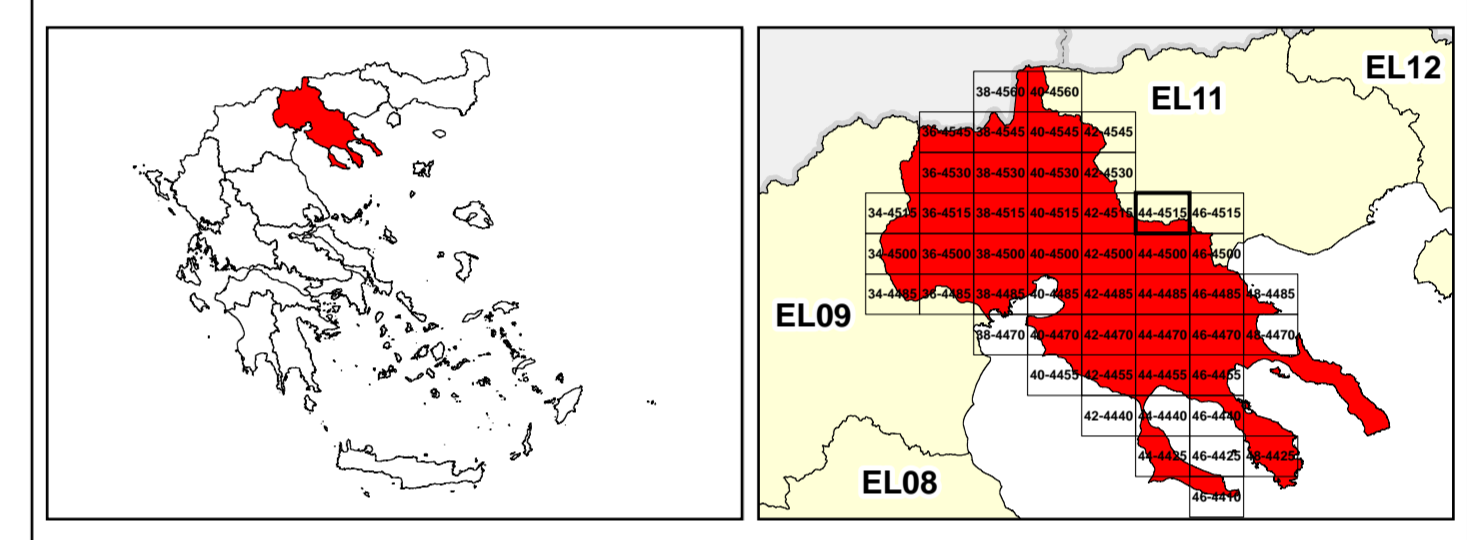
**LANDUSE - ECONOMIC ACTIVITIES - CULTURAL HERITAGE (within flood zone)**



<ul style="list-style-type: none"> <li>/ HOSPITAL</li> <li>CLINICS-HEALTH UNITS</li> <li>/ EDUCATION</li> <li>FACILITIES</li> <li>/ CULTURAL HERITAGE MONUMENTS</li> <li>CIVIL PROTECTION FACILITIES</li> <li>LIVESTOCK HOLDINGS</li> <li>/ ENERGY STATIONS- STATIONS (SHPP)</li> <li>WATER SUPPLY BOREHOLES- WATER SOURCES</li> </ul>	<ul style="list-style-type: none"> <li>WASTE WATER TREATMENT PLANT</li> <li>INDUSTRIES</li> <li>INDICATIVE AFFECTED POPULATION</li> <li>PROTECTED AREAS OF 2000/60/EC DIRECTIVE</li> </ul>	<ul style="list-style-type: none"> <li>HERITAGE SITES</li> <li>INDUSTRIAL SITES</li> <li>LANDFILL</li> <li>AREAS / DEVELOPED TOURIST</li> <li>AREAS / DEVELOPING TOURIST</li> <li>RICE CROP</li> <li>GREEN HOUSES</li> <li>CROPS</li> <li>PORT</li> <li>FLOOD ZONE T=1000 YEARS</li> <li>AS RECREATIONAL WATER</li> </ul>
--	--	---

SC: IMPORTANCE  
 SPA: AREAS  
 SCISPA: SPECIAL PROTECTION AREAS  
 SITE OF COMMUNITY IMPORTANCE AND SPECIAL PROTECTION AREAS  
 WATER SYSTEMS IDENTIFIED AS RECREATIONAL WATER

BOUNDARIES OF NEIGHBORING STATES  
 RIVER BASIN DISTRICT EL10  
 OTHER RIVER BASIN DISTRICTS  
 APSFR  
 STREAMS  
 ROAD NETWORK  
 MAJOR NATIONAL ROAD NETWORK  
 SECONDARY - TERTIARY NATIONAL ROAD NETWORK  
 MAJOR PROVINCIAL ROAD NETWORK  
 SECONDARY-TERTIARY PROVINCIAL ROAD NETWORK  
 RAILWAY LINE

GGRS 87 QUADRATURE PER 2.500 M.  
 0 87 2.500  
 2022  
 306.612.825ton




  
 &
   


1

μ μ (EL10)

1° - 7

=50 - EL10APSF006

**FLUVIAL FLOOD RISK MAP FOR RETURN PERIOD =50 YEARS - APSFR EL10APSF006**

EL10-07-FRSK-050-025-44-4515-02	1:25.000
23-12-2023	2.0

NERCO

