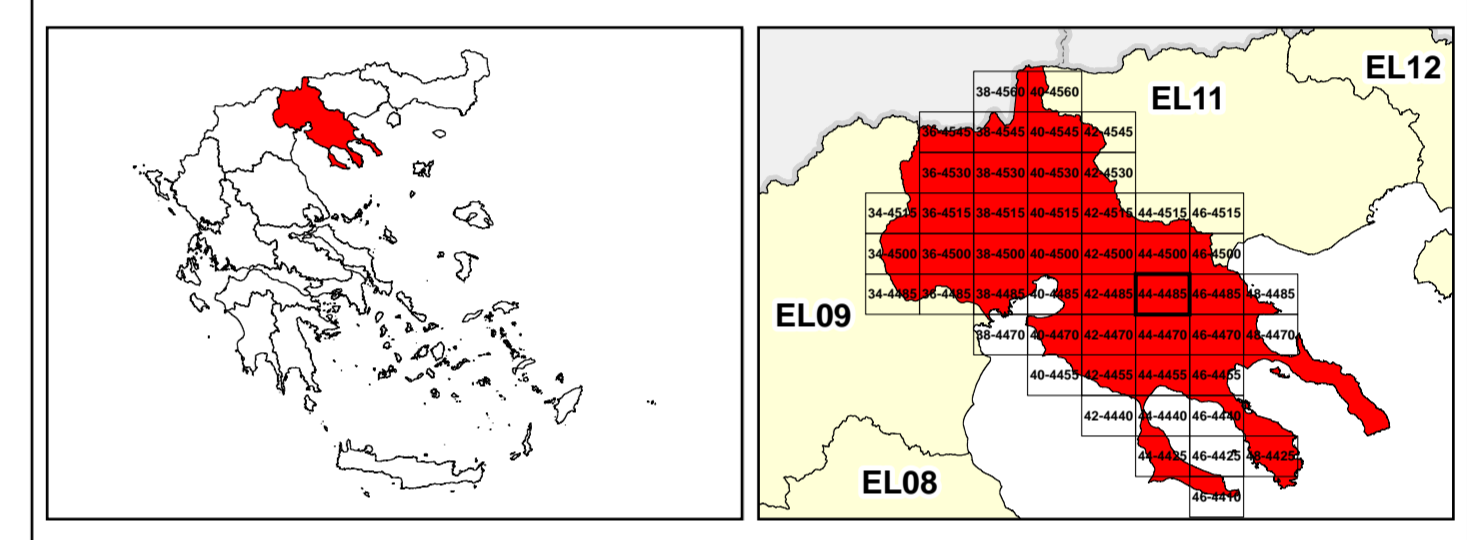


LEGEND

LANDUSE - ECONOMIC ACTIVITIES - CULTURAL HERITAGE (within flood zone)

- HOSPITAL
- CLINICS-HEALTH UNITS
- EDUCATION
- SPORT
- INDUSTRIES
- CULTURAL HERITAGE MONUMENTS
- CIVIL PROTECTION FACILITIES
- LIVESTOCK HOLDINGS
- ENERGY STATIONS
- SMALL HYDROPOWER STATIONS (SHPP)
- WATER SUPPLY BOREHOLES-WATER SOURCES
- WASTE WATER TREATMENT PLANT
- INDUSTRIAL SITES
- LANDFILL
- DEVELOPED TOURIST AREAS
- DEVELOPING TOURIST AREAS
- RICE CROP
- GREEN HOUSES
- CROPS
- PORT
- FLOOD ZONE T=1000 YEARS
- INDICATIVE AFFECTED POPULATION
- PROTECTED AREAS OF 2000/60/EC DIRECTIVE
- SC: IMPORTANCE
- SPA: AREAS
- ROAD NETWORK
- MAJOR NATIONAL ROAD NETWORK
- SECONDARY - TERTIARY NATIONAL ROAD NETWORK
- MAJOR PROVINCIAL ROAD NETWORK
- SECONDARY-TERTIARY PROVINCIAL ROAD NETWORK
- RAILWAY LINE

Scale: 0 to 2.500 M. GGRS 87 QUADRATURE PER 2.500 M.



&

1

μ μ (EL10)

1° - 7

=50 - EL10APSF006

FLUVIAL FLOOD RISK MAP FOR RETURN PERIOD =50 YEARS - APSFR EL10APSF006

EL10-07-FRSK-050-025-44-4485-02	1:25.000
23-12-2023	2.0

NERCO