

/LEGEND

LANDUSE - ECONOMIC ACTIVITIES - CULTURAL HERITAGE (within flood zone)

- HOSPITAL**
- CLINICS-HEALTH UNITS**
- EDUCATION**
- FACILITIES**
- HERITAGE MONUMENTS**
- CIVIL PROTECTION FACILITIES**
- LIVESTOCK HOLDINGS**
- ENERGY STATIONS- STATIONS (SHP)**
- WATER SUPPLY BOREHOLES- WATER SOURCES**
- WASTE WATER TREATMENT PLANT**
 - <10,000
 - 10,000-100,000
 - >100,000
- INDUSTRIES**
- IPPC**
- SEVESO**
- IED**
- OTHER UNITS**
- INDICATIVE AFFECTED POPULATION**
 - < 500
 - 500 - 2000
 - > 2000
- HERITAGE SITES**
- INDUSTRIAL SITES**
- LANDFILL**
- AREAS / DEVELOPED TOURIST**
- AREAS / DEVELOPING TOURIST**
- AREAS / RICE CROP**
- AREAS / GREEN HOUSES**
- CROPS / OTHER**
- PORT**
- FLOOD ZONE T=1000 YEARS**
- PROTECTED AREAS OF 2000/60/EC DIRECTIVE**
 - SC: IMPORTANCE**
 - SPA: AREAS**
 - SPECIAL PROTECTION AREAS**
 - SITE OF COMMUNITY IMPORTANCE AND SPECIAL PROTECTION AREAS**
 - WATER SYSTEMS IDENTIFIED AS RECREATIONAL WATER**

BOUNDARIES OF NEIGHBORING STATES

RIVER BASIN DISTRICT EL10

OTHER RIVER BASIN DISTRICTS

APSR

STREAMS

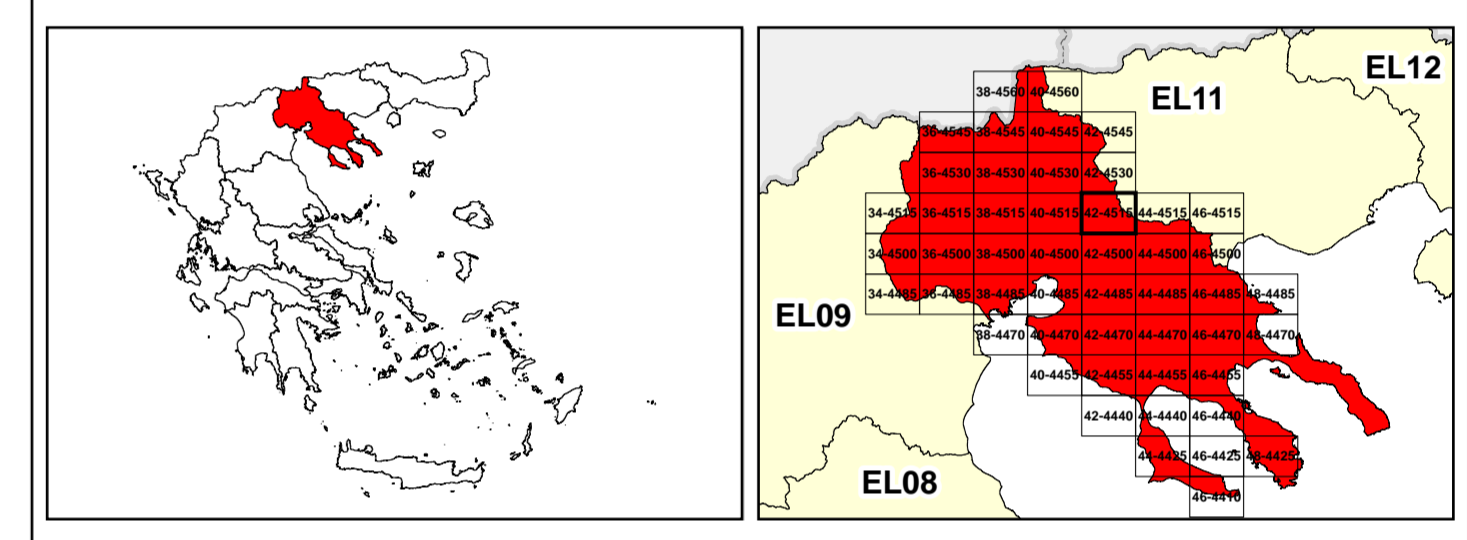
ROAD NETWORK

- MAJOR NATIONAL ROAD NETWORK**
- SECONDARY - TERTIARY NATIONAL ROAD NETWORK**
- MAJOR PROVINCIAL ROAD NETWORK**
- SECONDARY-TERTIARY PROVINCIAL ROAD NETWORK**
- RAILWAY LINE**

GGRS 87 QUADRATURE PER 2.500 M.

0 2.500 5000 7500 10000

2022. (1) 306.612.8250m



Logo of the Ministry of Environment, Energy and Climate Change of Greece.

1

μ μ (EL10)

1° - 7

=50 - EL10APSR006 & EL10APSR008

FLUVIAL FLOOD RISK MAP FOR RETURN PERIOD =50 YEARS - APSFR EL10APSR006 & EL10APSR008

EL10-07-FRSK-050-025-42-4515-02	1:25.000
23-12-2023	2.0

Logo of NERCO.

Logo of the European Union.

Logo of the Ministry of Environment, Energy and Climate Change of Greece (ΕΣΠΑ 2014-2020).