

/LEGEND

LANDUSE - ECONOMIC ACTIVITIES - CULTURAL HERITAGE (within flood zone)

- HOSPITAL** (Red circle with cross)
- CLINICS-HEALTH UNITS** (Red circle)
- EDUCATION** (Blue circle)
- SPORT** (Blue circle)
- CULTURAL HERITAGE MONUMENTS** (Yellow circle)
- CIVIL PROTECTION FACILITIES** (Yellow circle)
- LIVESTOCK HOLDINGS** (Yellow circle)
- ENERGY STATIONS- STATIONS (SHP)** (Yellow circle)
- SMALL HYDROPOWER STATIONS (SHP)** (Yellow circle)
- WATER SUPPLY BOREHOLES- WATER SOURCES** (Yellow circle)
- WASTE WATER TREATMENT PLANT** (Blue circle)
- INDUSTRIES** (Red circle)
- IPPC** (Red circle)
- SEVESO** (Red circle)
- IED** (Red circle)
- OTHER UNITS** (Red circle)
- INDICATIVE AFFECTED POPULATION** (Pink figures)
- PROTECTED AREAS OF 2000/60/EC DIRECTIVE** (Green dashed line)
- SITE OF COMMUNITY IMPORTANCE** (Green dashed line)
- SPECIAL PROTECTION AREAS** (Red dashed line)
- CULTURAL HERITAGE SITES** (Yellow rectangle)
- INDUSTRIAL SITES** (Purple rectangle)
- LANDFILL** (Green rectangle)
- AREAS / DEVELOPED TOURIST** (Yellow rectangle)
- AREAS / DEVELOPING TOURIST** (Orange rectangle)
- RICE CROP** (Yellow rectangle)
- GREEN HOUSES** (Yellow rectangle)
- CROPS** (Green rectangle)
- PORT** (Blue rectangle)
- FLOOD ZONE T=1000 YEARS** (Blue rectangle)
- PORT** (Blue rectangle)
- AIRPORT** (Blue rectangle)
- AS RECREATIONAL WATER** (Blue rectangle)

BOUNDARIES OF NEIGHBORING STATES (Black line)

RIVER BASIN DISTRICT EL10 (Yellow line)

OTHER RIVER BASIN DISTRICTS (Red line)

APSR (Red dashed line)

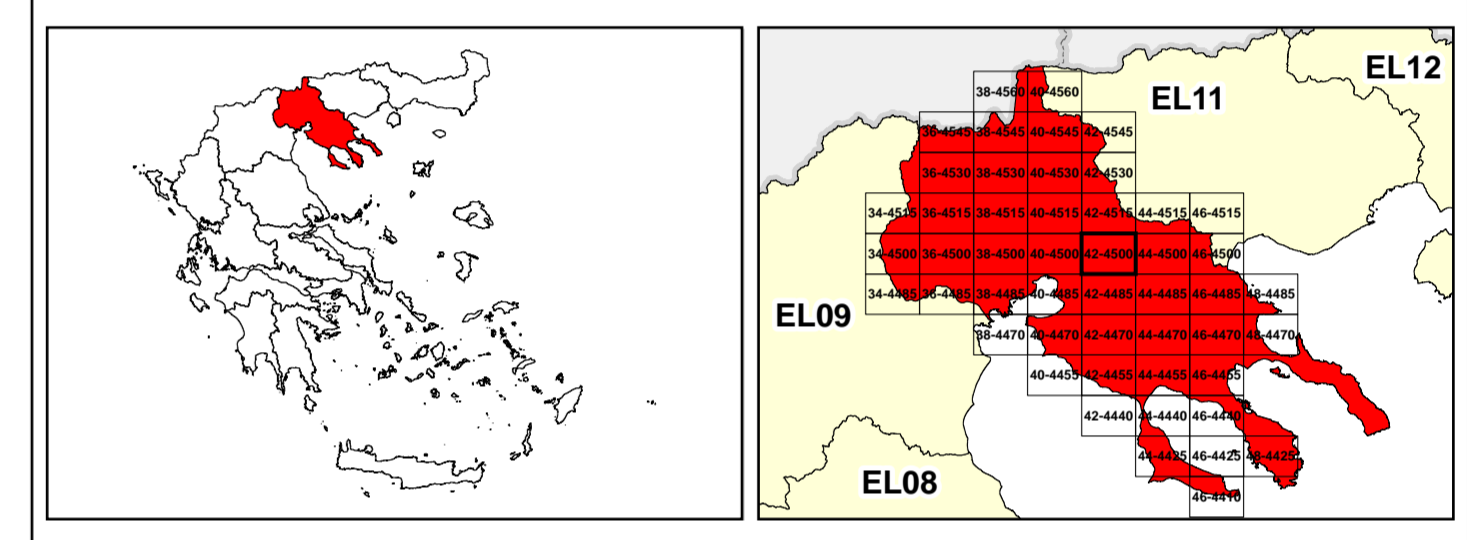
STREAMS (Blue line)


ROAD NETWORK

- MAJOR NATIONAL ROAD NETWORK** (Thick black line)
- SECONDARY - TERTIARY NATIONAL ROAD NETWORK** (Thin black line)
- MAJOR PROVINCIAL ROAD NETWORK** (Red line)
- SECONDARY-TERTIARY PROVINCIAL ROAD NETWORK** (Thin red line)
- RAILWAY LINE** (Black line with cross-ticks)


Scale: 0, 87, 2.500 M. GGRS 87 QUADRATURE PER 2.500 M.

Coordinates: 422500, 425000, 427500, 430000, 432500, 435000, 437500 (Easting); 4505000, 4510000, 4515000 (Northing)





 &



1

μ μ (EL10)

1° - 7

=50 - EL10APSR006

FLUVIAL FLOOD RISK MAP FOR RETURN PERIOD =50 YEARS - APSFR EL10APSR006

EL10-07-FRSK-050-025-42-4500-02	1:25.000
23-12-2023	2.0

/ &

NERCO -

