

/LEGEND

LANDUSE - ECONOMIC ACTIVITIES - CULTURAL HERITAGE (within flood zone)

/ HOSPITAL	WASTE WATER TREATMENT PLANT	/ CULTURAL HERITANCE SITES
CLINICS-HEALTH UNITS	<10,000	INDUSTRIAL SITES
/ EDUCATION	10,000-100,000	LANDFILL
FACILITIES	>100,000	/ DEVELOPED TOURIST AREAS
HERITAGE MONUMENTS	IPPC	/ DEVELOPING TOURIST AREAS
CIVIL PROTECTION FACILITIES	SEVESO	/ RICE CROP
LIVESTOCK HOLDINGS	IED	/ GREEN HOUSES
/ ENERGY STATIONS	OTHER UNITS	CROPS
/ SMALL HYDROPOWER STATIONS (SHPP)	INDICATIVE AFFECTED POPULATION	PORT
WATER SUPPLY BOREHOLES-WATER SOURCES	< 500	/ AIRPORT
	500 - 2000	FLOOD ZONE T=1000 YEARS
	> 2000	
SC: IMPORTANCE	PROTECTED AREAS OF 2000/60/EC DIRECTIVE	/ SITE OF COMMUNITY IMPORTANCE AND SPECIAL PROTECTION AREAS
SPA: AREAS	/ SPECIAL PROTECTION AREAS	/ WATER SYSTEMS IDENTIFIED AS RECREATIONAL WATER

BOUNDARIES OF NEIGHBORING STATES

RIVER BASIN DISTRICT EL10

OTHER RIVER BASIN DISTRICTS

APSR

STREAMS

ROAD NETWORK

MAJOR NATIONAL ROAD NETWORK

SECONDARY - TERTIARY NATIONAL ROAD NETWORK

MAJOR PROVINCIAL ROAD NETWORK

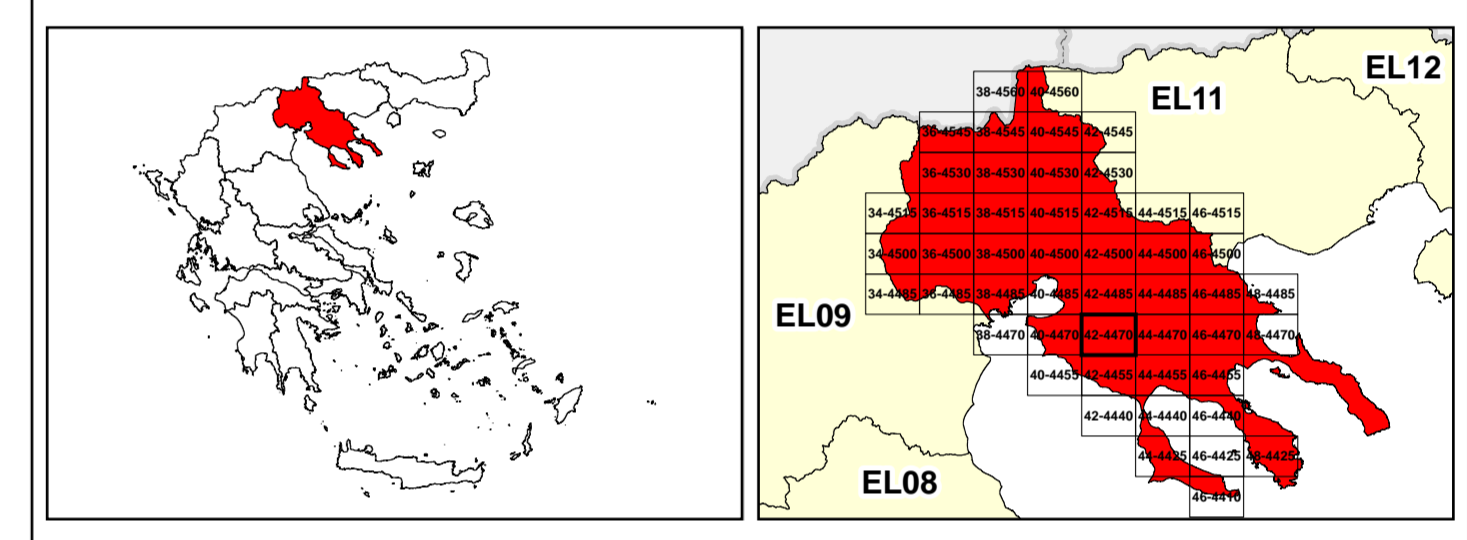
SECONDARY-TERTIARY PROVINCIAL ROAD NETWORK

RAILWAY LINE

0 2.500 5.000 7.500 10.000 km

GGRS 67 QUADRATURE PER 2.500 M.

2022



&

1

μ μ (EL10)

1° - 7

=50 - EL10APSR004, EL10APSR006 & EL10APSR008

FLUVIAL FLOOD RISK MAP FOR RETURN PERIOD =50 YEARS - APSFR EL10APSR004, EL10APSR006 & EL10APSR008

EL10-07-FRSK-050-025-42-4470-02	1:25.000
23-12-2023	2.0

/

&

NERCO