



/LEGEND

LANDUSE - ECONOMIC ACTIVITIES - CULTURAL HERITAGE (within flood zone)

/ HOSPITAL	WASTE WATER TREATMENT PLANT	/ CULTURAL HERITANCE SITES
CLINICS-HEALTH UNITS	<10,000	INDUSTRIAL SITES
/ EDUCATION FACILITIES	10,000-100,000	LANDFILL
/ SPORT FACILITIES	>100,000	/ DEVELOPED TOURIST AREAS
/ CULTURAL HERITANCE MONUMENTS	IPPC	/ DEVELOPING TOURIST AREAS
CIVIL PROTECTION FACILITIES	SEVESO	/ RICE CROP
LIVESTOCK HOLDINGS	IED	/ GREEN HOUSES
/ ENERGY STATIONS- STATIONS (SHP)	OTHER UNITS	/ OTHER
/ SMALL HYDROPOWER STATIONS (SHP)	INDICATIVE AFFECTED POPULATION	PORT
WATER SUPPLY BOREHOLES- WATER SOURCES	< 500	=1000 FLOOD ZONE T=1000 YEARS
	500 - 2000	
	> 2000	
SC: IMPORTANCE	PROTECTED AREAS OF 2000/60/EC DIRECTIVE	/ SITE OF COMMUNITY IMPORTANCE AND SPECIAL PROTECTION AREAS
SPA: AREAS	/ SPECIAL PROTECTION AREAS	/ WATER SYSTEMS IDENTIFIED AS RECREATIONAL WATER

BOUNDARIES OF NEIGHBORING STATES

RIVER BASIN DISTRICT EL10

OTHER RIVER BASIN DISTRICTS

APSR

STREAMS

ROAD NETWORK

MAJOR NATIONAL ROAD NETWORK

NATIONAL ROAD NETWORK

MAJOR PROVINCIAL ROAD NETWORK

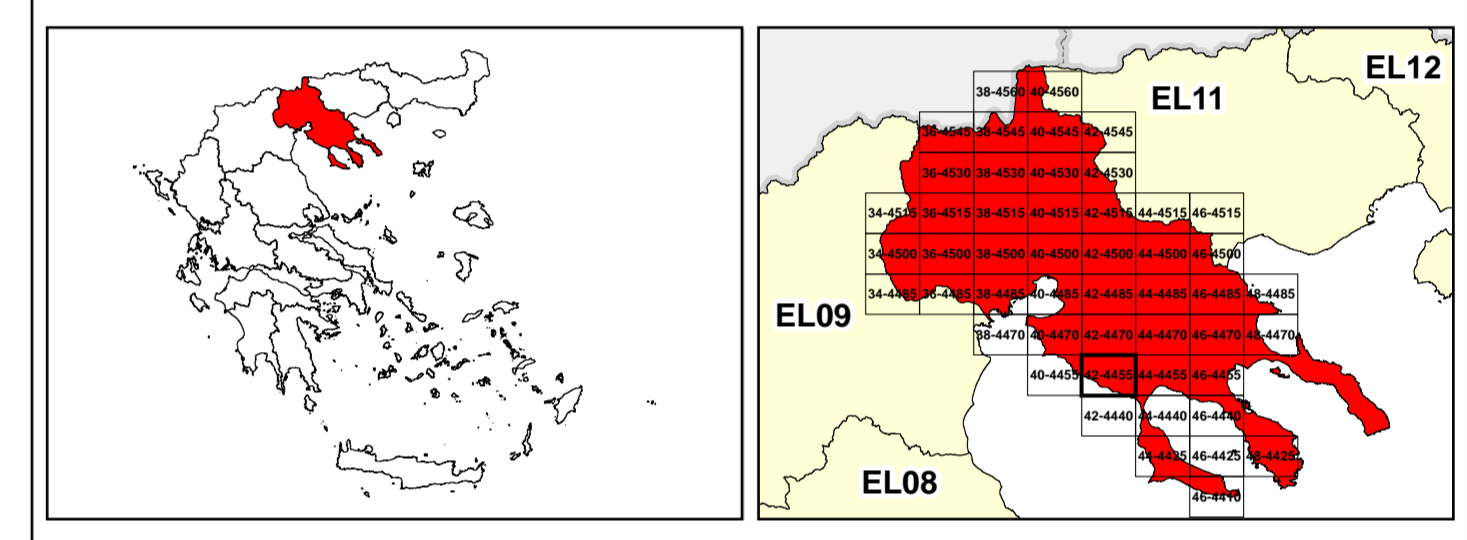
SECONDARY-TERTIARY PROVINCIAL ROAD NETWORK

RAILWAY LINE

0 87 2.500

GGRS 67 QUADRATURE PER 2.500 M.

2022. (1) 44.727.75600 (24hr. μ



&

1

μ μ (EL10)

1° - 7

=50 - EL10APSR003 & EL10APSR004

FLUVIAL FLOOD RISK MAP FOR RETURN PERIOD =50 YEARS - APSR EL10APSR003 & EL10APSR004

EL10-07-FRSK-050-025-42-4455-02	1:25.000
23-12-2023	2.0

/ &

NERCO