

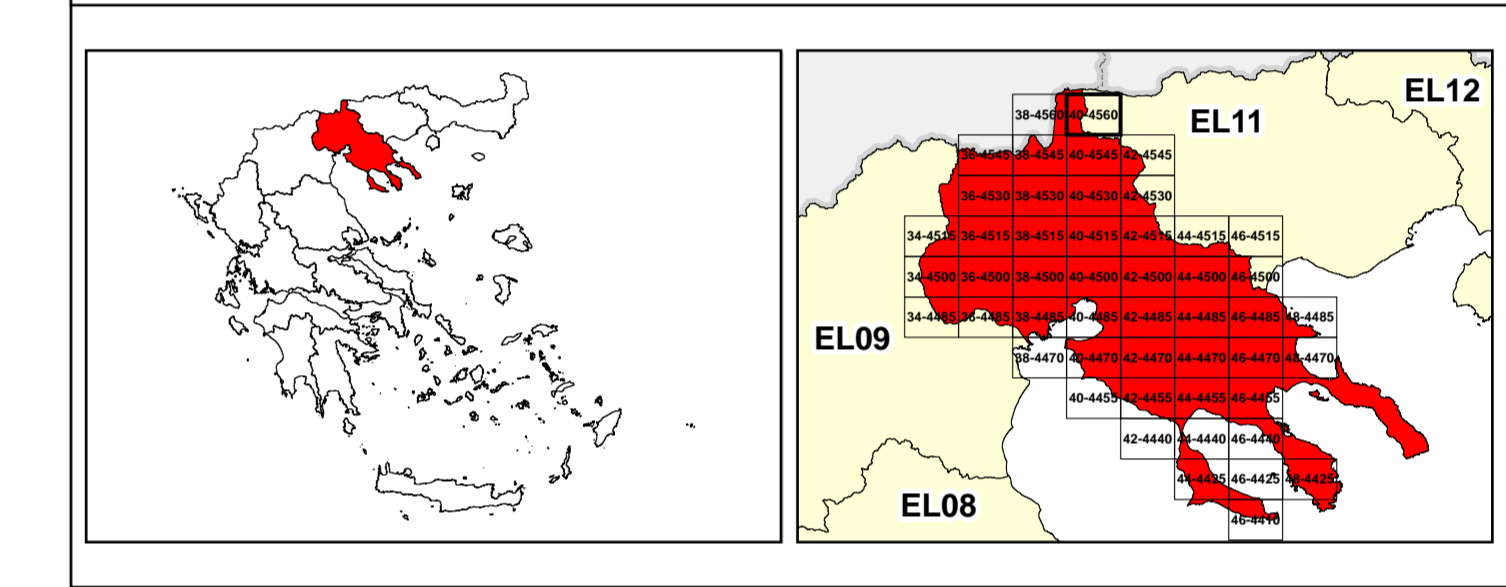


/LEGEND

LANDUSE - ECONOMIC ACTIVITIES - CULTURAL HERITAGE (within flood zone)

- / HOSPITAL
- CLINICS-HEALTH UNITS
- / EDUCATION
- FACILITIES
- / CULTURAL HERITAGE MONUMENTS
- CIVIL PROTECTION FACILITIES
- LIVESTOCK HOLDINGS
- / ENERGY STATIONS
- / SMALL HYDROPOWER STATIONS (SHPP)
- WATER SUPPLY BOREHOLES-WATER SOURCES
- WASTE WATER TREATMENT PLANT
- <10,000
- 10,000-100,000
- >100,000
- / INDUSTRIES
- IPPC
- SEVESO
- IED
- OTHER UNITS
- INDICATIVE AFFECTED POPULATION
- < 500
- 500 - 2000
- > 2000
- PROTECTED AREAS OF 2000/60/EC DIRECTIVE
- / SITE OF COMMUNITY IMPORTANCE
- SCISPA
- / SITE OF COMMUNITY IMPORTANCE AND SPECIAL PROTECTION AREAS
- SPAS
- / SPECIAL PROTECTION AREAS
- AS RECREATIONAL WATER
- AS RECREATIONAL WATER
- BOUNDARIES OF NEIGHBORING STATES
- RIVER BASIN DISTRICT EL10
- OTHER RIVER BASIN DISTRICTS
- APSF
- STREAMS
- ROAD NETWORK
- MAJOR NATIONAL ROAD NETWORK
- SECONDARY - TERTIARY NATIONAL ROAD NETWORK
- MAJOR PROVINCIAL ROAD NETWORK
- SECONDARY-TERTIARY PROVINCIAL ROAD NETWORK
- RAILWAY LINE

Scale: 0 to 2.500 M. GGRS 87 QUADRATURE PER 2.500 M.



1

μ μ (EL10)

1° - 7

=50 - EL10APSF008

FLUVIAL FLOOD RISK MAP FOR RETURN PERIOD =50 YEARS - APSFR EL10APSF008

EL10-07-FRSK-050-025-40-4560-02	1:25.000
23-12-2023	2.0

NERCO