



**/LEGEND**

**LANDUSE - ECONOMIC ACTIVITIES - CULTURAL HERITAGE (within flood zone)**

- / HOSPITAL** (Red circle with cross)
- CLINICS-HEALTH UNITS** (Red circle)
- / EDUCATION** (Blue circle)
- FACILITIES** (Yellow circle)
- / CULTURAL HERITAGE MONUMENTS** (Yellow circle with cross)
- CIVIL PROTECTION FACILITIES** (Yellow circle with cross)
- LIVESTOCK HOLDINGS** (Yellow circle)
- / ENERGY STATIONS- STATIONS (SHP)** (Yellow circle with cross)
- WATER SUPPLY BOREHOLES- WATER SOURCES** (Yellow circle)
- WASTE WATER TREATMENT PLANT** (Blue circle)
- / INDUSTRIES** (Red circle)
- IPPC** (Red circle)
- SEVESO** (Red circle)
- IED** (Red circle)
- OTHER UNITS** (Red circle)
- INDICATIVE AFFECTED POPULATION** (Pink figures)
- PROTECTED AREAS OF 2000/60/EC DIRECTIVE** (Green dashed line)
- SC: IMPORTANCE** (Green dashed line)
- SPA: AREAS** (Red dashed line)
- / CULTURAL HERITAGE SITES** (Yellow rectangle with cross)
- INDUSTRIAL SITES** (Yellow rectangle with cross)
- / LANDFILL** (Yellow rectangle with cross)
- AREAS / DEVELOPED TOURIST** (Yellow rectangle)
- AREAS / DEVELOPING TOURIST** (Yellow rectangle)
- / RICE CROP** (Yellow rectangle)
- / GREEN HOUSES** (Yellow rectangle)
- / OTHER** (Yellow rectangle)
- PORT** (Blue rectangle)
- FLOOD ZONE T=1000 YEARS** (Blue rectangle)
- FLOOD ZONE T=10000 YEARS** (Blue rectangle)
- PROTECTED AREAS OF 2000/60/EC DIRECTIVE** (Green dashed line)
- SCISPA: / SITE OF COMMUNITY IMPORTANCE AND SPECIAL PROTECTION AREAS** (Green dashed line)
- / SPECIAL PROTECTION AS RECREATIONAL WATER** (Blue rectangle)
- / WATER SYSTEMS IDENTIFIED** (Blue rectangle)

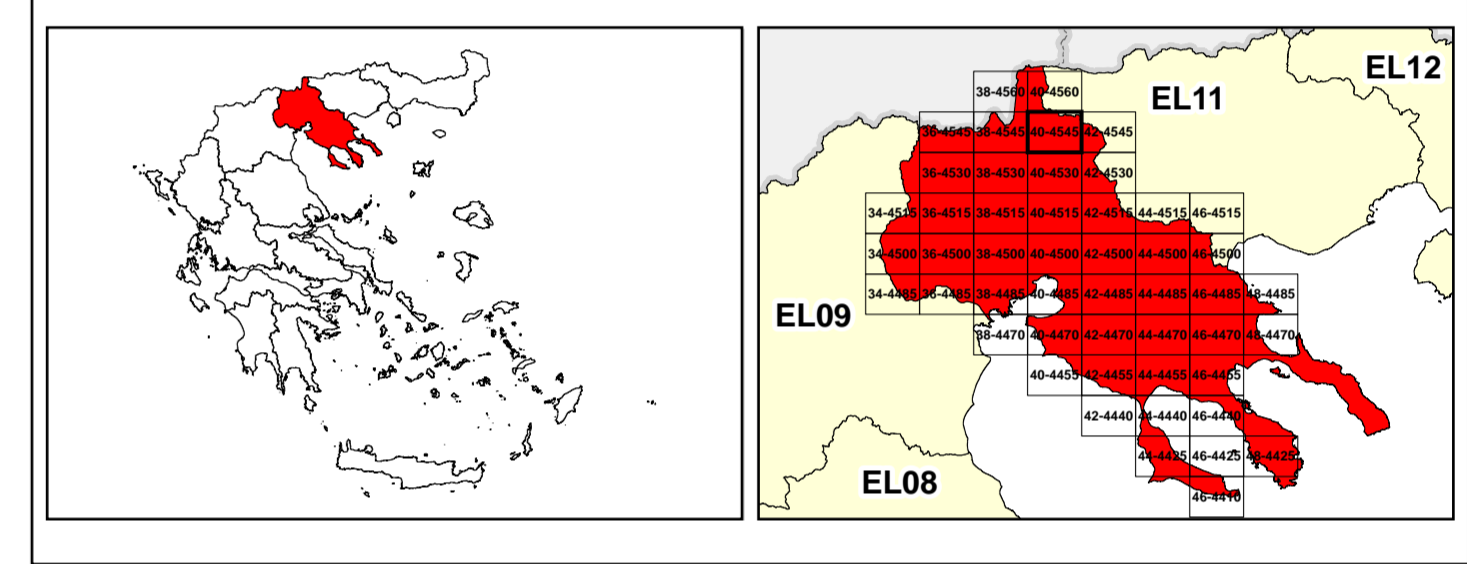
**BOUNDARIES OF NEIGHBORING STATES**

- EL10/ RIVER BASIN DISTRICT EL10** (Black line)
- OTHER RIVER BASIN DISTRICTS** (Red dashed line)
- / APSFR** (Red dashed line)
- / STREAMS** (Blue line)

**ROAD NETWORK**

- MAJOR NATIONAL ROAD NETWORK** (Thick black line)
- / SECONDARY - TERTIARY NATIONAL ROAD NETWORK** (Thin black line)
- MAJOR PROVINCIAL ROAD NETWORK** (Red line)
- / SECONDARY-TERTIARY PROVINCIAL ROAD NETWORK** (Thin red line)
- / RAILWAY LINE** (Black line with cross-ticks)

Scale: 0 to 2.500 M. GGRS 87 QUADRATURE PER 2.500 M.



Logo of the Ministry of Environment, Energy and Climate Change of Greece.

1

μ μ (EL10)

1° - 7

=50 - EL10APSF008

**FLUVIAL FLOOD RISK MAP FOR RETURN PERIOD =50 YEARS - APSFR EL10APSF008**

EL10-07-FRSK-050-025-40-4545-02	1:25.000
23-12-2023	2.0

Logo of the National River Control Authority (NERCO).

Logo of the European Union.

Logo of the Ministry of Environment, Energy and Climate Change of Greece (ΕΣΠΑ 2014-2020).