

/LEGEND

LANDUSE - ECONOMIC ACTIVITIES - CULTURAL HERITAGE (within flood zone)

/ HOSPITAL	WASTE WATER TREATMENT PLANT	HERITAGE SITES
CLINICS-HEALTH UNITS	10,000-100,000	INDUSTRIAL SITES
/ EDUCATION FACILITIES	>100,000 population symbol"/> >100,000	LANDFILL
/ SPORT FACILITIES	IPPC	AREAS / DEVELOPED TOURIST
/ CULTURAL HERITAGE MONUMENTS	SEVESO	AREAS / DEVELOPING TOURIST
CIVIL PROTECTION FACILITIES	IED	/ RICE CROP
LIVESTOCK HOLDINGS	OTHER UNITS	/ GREEN HOUSES
/ ENERGY STATIONS	< 500	CROPS
/ SMALL HYDROPOWER STATIONS (SHPP)	500 - 2000	PORT
WATER SUPPLY BOREHOLES - WATER SOURCES	> 2000	FLOOD ZONE T=1000 YEARS
SC: IMPORTANCE	PROTECTED AREAS OF 2000/60/EC DIRECTIVE	SITE OF COMMUNITY IMPORTANCE AND SPECIAL PROTECTION AREAS
SPA: AREAS	/ SPECIAL PROTECTION AREAS	WATER SYSTEMS IDENTIFIED AS RECREATIONAL WATER

BOUNDARIES OF NEIGHBORING STATES

RIVER BASIN DISTRICT EL10

OTHER RIVER BASIN DISTRICTS

APSF

STREAMS

ROAD NETWORK

MAJOR NATIONAL ROAD NETWORK

SECONDARY - TERTIARY NATIONAL ROAD NETWORK

MAJOR PROVINCIAL ROAD NETWORK

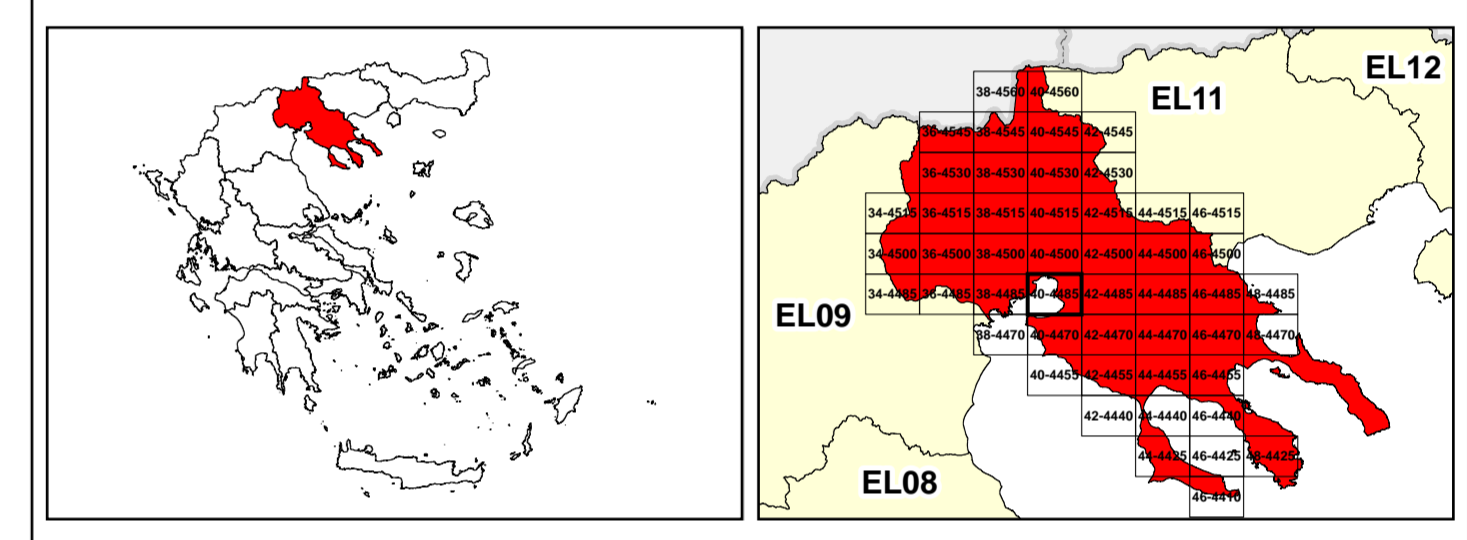
SECONDARY-TERTIARY PROVINCIAL ROAD NETWORK

RAILWAY LINE

GGRS 87 QUADRATURE PER 2.500 M.

0 2.500 5.000 7.500 10.000 12.500 15.000 17.500 20.000 22.500 25.000 27.500 30.000 32.500 35.000 37.500 40.000 42.500 45.000 47.500 50.000

2022. (1) 22-812-5100m (24hr) (2) 41-041-2470m (48hr) (3) 138-022-8250m (48hr)



&

1

μ μ (EL10)

1° - 7

=50 - EL10APSF008

FLUVIAL FLOOD RISK MAP FOR RETURN PERIOD =50 YEARS - APSFR EL10APSF008

EL10-07-FRSK-050-025-40-4485-02	1:25.000
23-12-2023	2.0

/ &

NERCO