



/LEGEND

LANDUSE - ECONOMIC ACTIVITIES - CULTURAL HERITAGE (within flood zone)

- HOSPITAL** (Icon)
- CLINICS-HEALTH UNITS** (Icon)
- EDUCATION** (Icon)
- FACILITIES** (Icon)
- HERITAGE MONUMENTS** (Icon)
- CIVIL PROTECTION FACILITIES** (Icon)
- LIVESTOCK HOLDINGS** (Icon)
- ENERGY STATIONS** (Icon)
- SMALL HYDROPOWER STATIONS (SHPP)** (Icon)
- WATER SUPPLY BOREHOLES-WATER SOURCES** (Icon)
- WASTE WATER TREATMENT PLANT** (Icon)
- INDUSTRIES** (Icon)
- INDUSTRIAL SITES** (Icon)
- LANDFILL** (Icon)
- HERITAGE SITES** (Icon)
- DEVELOPED TOURIST AREAS** (Icon)
- DEVELOPING TOURIST AREAS** (Icon)
- RICE CROP** (Icon)
- GREEN HOUSES** (Icon)
- CROPS** (Icon)
- PORT** (Icon)
- FLOOD ZONE T=1000 YEARS** (Icon)
- AIRPORT** (Icon)
- OTHER** (Icon)

INDICATIVE AFFECTED POPULATION

- < 500 (Icon)
- 500 - 2000 (Icon)
- > 2000 (Icon)

PROTECTED AREAS OF 2000/60/EC DIRECTIVE

- SC: IMPORTANCE** (Icon)
- SPA: AREAS** (Icon)
- SPECIAL PROTECTION AREAS** (Icon)
- SPECIAL PROTECTION AREAS AS RECREATIONAL WATER** (Icon)
- SPECIAL PROTECTION AREAS AS RECREATIONAL WATER** (Icon)

BOUNDARIES OF NEIGHBORING STATES

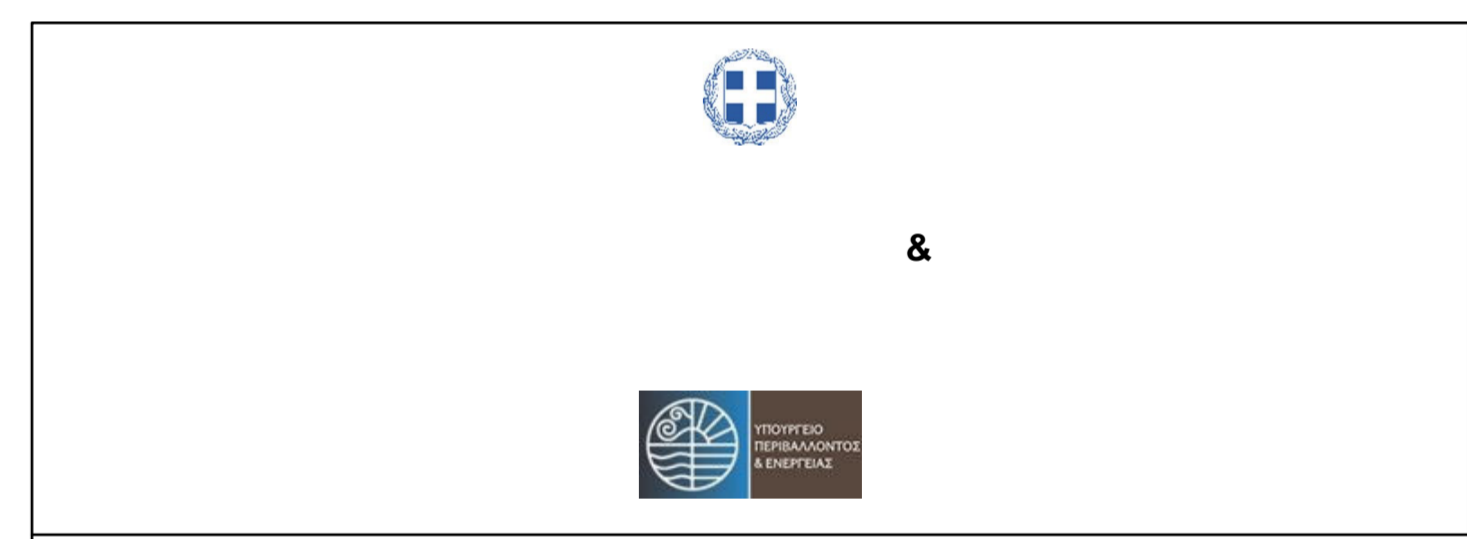
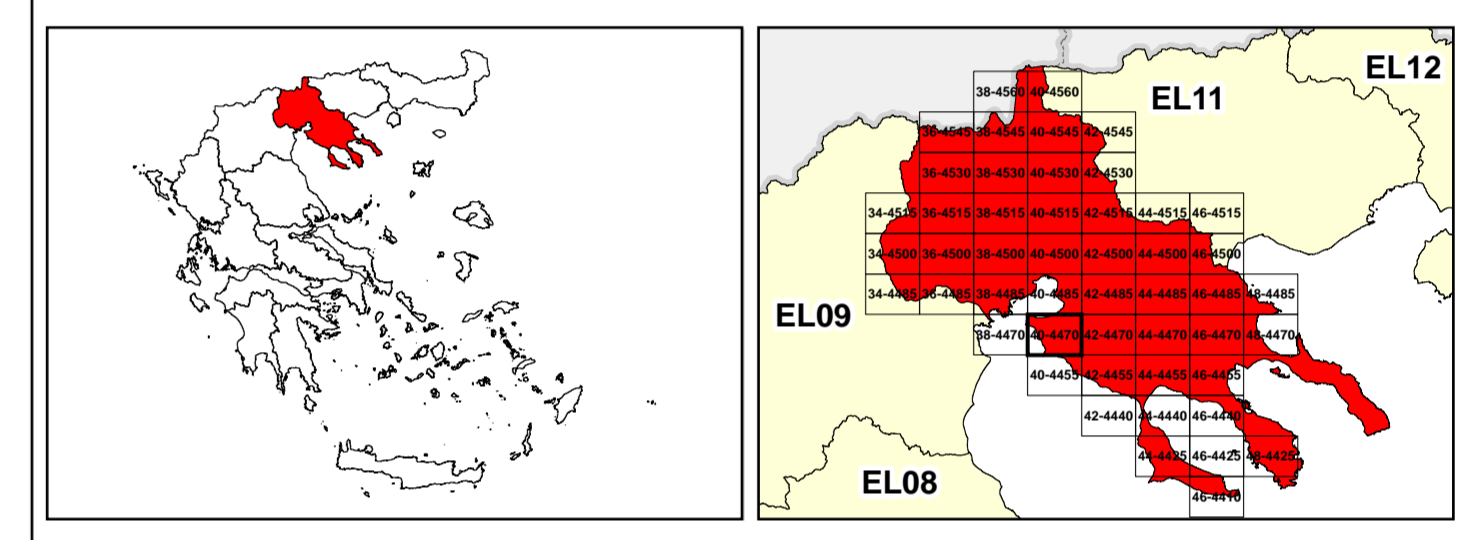
- RIVER BASIN DISTRICT EL10** (Icon)
- OTHER RIVER BASIN DISTRICTS** (Icon)
- APSFR** (Icon)
- STREAMS** (Icon)

ROAD NETWORK

- MAJOR NATIONAL ROAD NETWORK** (Icon)
- SECONDARY - TERTIARY NATIONAL ROAD NETWORK** (Icon)
- MAJOR PROVINCIAL ROAD NETWORK** (Icon)
- SECONDARY-TERTIARY PROVINCIAL ROAD NETWORK** (Icon)
- RAILWAY LINE** (Icon)

Scale: 0 87 2.500 km
GGRS 87 QUADRATURE PER 2.500 M.

Coordinates: (1) 15.94821000m (24hr) (2) 41.0412470m



1

μ μ (EL10)

1° - 7

=50 - EL10APSR004 & EL10APSR008

FLUVIAL FLOOD RISK MAP FOR RETURN PERIOD =50 YEARS - APSFR EL10APSR004 & EL10APSR008

EL10-07-FRSK-050-025-40-4470-02	1:25.000
23-12-2023	2.0

NERCO