

/LEGEND

LANDUSE - ECONOMIC ACTIVITIES - CULTURAL HERITAGE (within flood zone)

- HOSPITAL**
- CLINICS-HEALTH UNITS**
- EDUCATION**
- FACILITIES**
- HERITAGE MONUMENTS**
- CIVIL PROTECTION FACILITIES**
- LIVESTOCK HOLDINGS**
- ENERGY STATIONS**
- SMALL HYDROPOWER STATIONS (SHPP)**
- WATER SUPPLY BOREHOLES-WATER SOURCES**

WASTE WATER TREATMENT PLANT

- <10,000
- 10,000-100,000
- >100,000

INDUSTRIES

- IPPC
- SEVESO
- IED
- OTHER UNITS

INDICATIVE AFFECTED POPULATION

- < 500
- 500 - 2000
- > 2000

HERITANCE SITES

- INDUSTRIAL SITES
- LANDFILL
- AREAS / DEVELOPED TOURIST
- AREAS / DEVELOPING TOURIST
- AREAS / RICE CROP
- GREEN HOUSES
- CROPS
- OTHER

PROTECTED AREAS OF 2000/60/EC DIRECTIVE

- SC: IMPORTANCE
- SPA: AREAS
- SITE OF COMMUNITY IMPORTANCE AND SPECIAL PROTECTION AREAS
- SPECIAL PROTECTION
- WATER SYSTEMS IDENTIFIED AS RECREATIONAL WATER

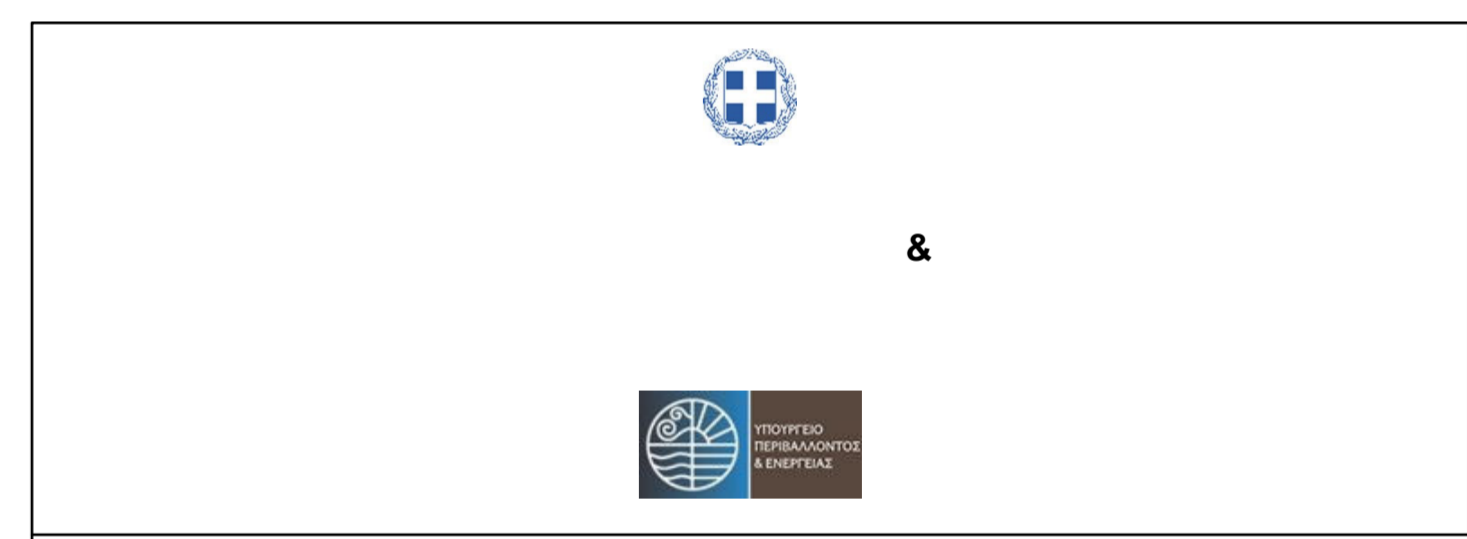
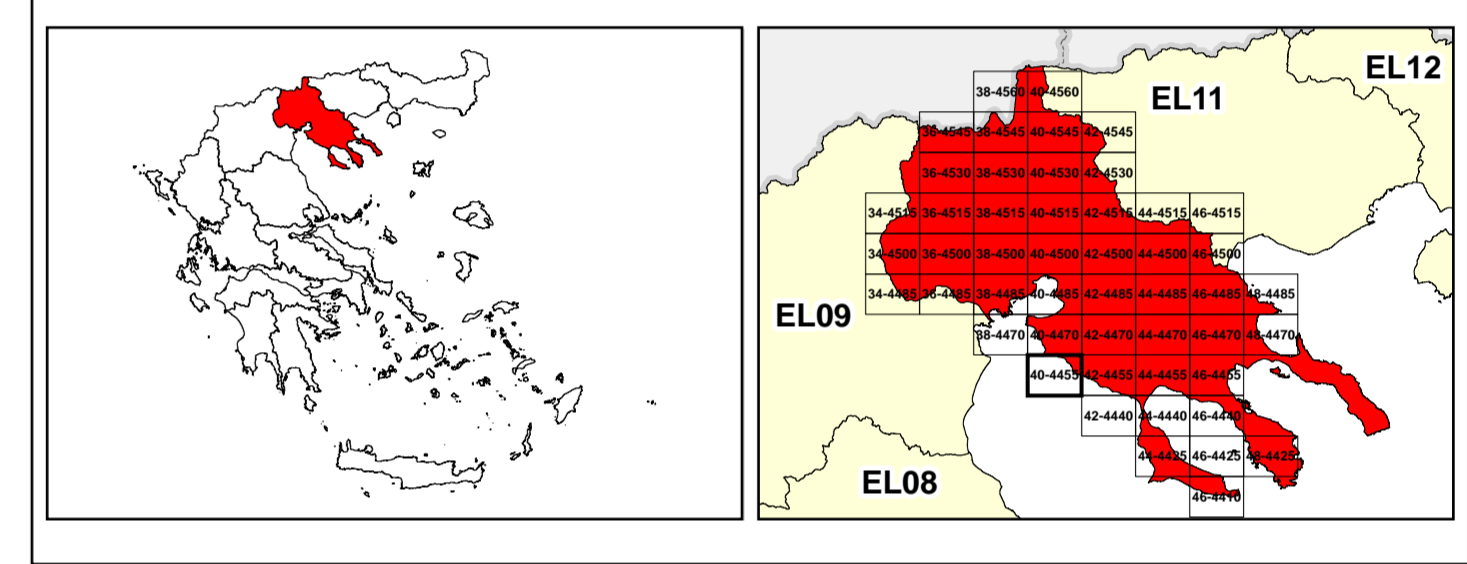
BOUNDARIES OF NEIGHBORING STATES

- RIVER BASIN DISTRICT EL10
- OTHER RIVER BASIN DISTRICTS
- APSF
- STREAMS

ROAD NETWORK

- MAJOR NATIONAL ROAD NETWORK
- SECONDARY - TERTIARY NATIONAL ROAD NETWORK
- MAJOR PROVINCIAL ROAD NETWORK
- SECONDARY-TERTIARY PROVINCIAL ROAD NETWORK
- RAILWAY LINE

Scale: 0 1 2 3 km
GGRS 87 QUADRATURE PER 2.500 M.



1

μ μ (EL10)
1° - 7

=50 - EL10APSF004

FLUVIAL FLOOD RISK MAP FOR RETURN PERIOD =50 YEARS - APSFR EL10APSF004

EL10-07-FRSK-050-025-40-4455-02	1:25.000
23-12-2023	2.0

NERCO