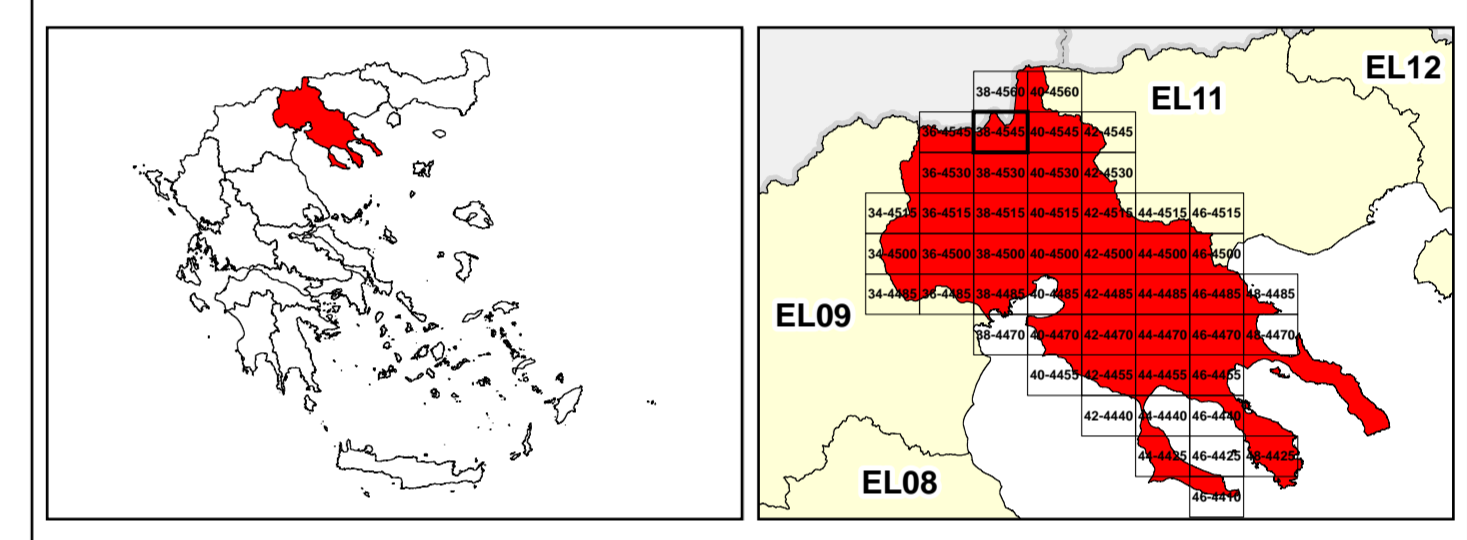


/LEGEND

LANDUSE - ECONOMIC ACTIVITIES - CULTURAL HERITAGE (within flood zone)

- HOSPITAL** (Red cross symbol)
- CLINICS-HEALTH UNITS** (Red circle with cross symbol)
- EDUCATION** (Red circle with book symbol)
- FACILITIES** (Red circle with building symbol)
- HERITAGE MONUMENTS** (Red circle with monument symbol)
- CIVIL PROTECTION FACILITIES** (Red circle with fire symbol)
- LIVESTOCK HOLDINGS** (Red circle with cow symbol)
- ENERGY STATIONS- STATIONS (SHPP)** (Red circle with lightning bolt symbol)
- WATER SUPPLY BOREHOLES- WATER SOURCES** (Red circle with water tap symbol)
- WASTE WATER TREATMENT PLANT** (Blue circle with water drop symbol)
- INDUSTRIES** (Red circle with factory symbol)
- IPPC** (Red circle with factory symbol)
- SEVESO** (Red circle with hazard symbol)
- IED** (Red circle with bomb symbol)
- OTHER UNITS** (Red circle with hazard symbol)
- INDICATIVE AFFECTED POPULATION**
 - < 500 (Pink circle)
 - 500 - 2000 (Pink circle with person)
 - > 2000 (Pink circle with group of people)
- HERITANCE SITES** (Yellow rectangle)
- INDUSTRIAL SITES** (Purple rectangle)
- LANDFILL** (Green rectangle with cross-hatch)
- AREAS / DEVELOPED TOURIST** (Orange rectangle)
- AREAS / DEVELOPING TOURIST** (Yellow rectangle)
- RICE CROP** (Green rectangle)
- GREEN HOUSES** (Yellow rectangle)
- CROPS** (Green rectangle)
- PORT** (Blue rectangle)
- FLOOD ZONE T=1000 YEARS** (Blue rectangle with cross-hatch)
- PROTECTED AREAS OF 2000/60/EC DIRECTIVE**
 - SC: IMPORTANCE (Green dashed line)
 - SCISPA: SITE OF COMMUNITY IMPORTANCE AND SPECIAL PROTECTION AREAS (Purple dashed line)
 - SPA: SPECIAL PROTECTION AREAS (Red dashed line)
- ROAD NETWORK**
 - MAJOR NATIONAL ROAD NETWORK (Thick black line)
 - SECONDARY - TERTIARY NATIONAL ROAD NETWORK (Thin black line)
 - MAJOR PROVINCIAL ROAD NETWORK (Red line)
 - SECONDARY-TERTIARY PROVINCIAL ROAD NETWORK (Dashed black line)
 - RAILWAY LINE (Black line with cross-ticks)
- BOUNDARIES OF NEIGHBORING STATES** (Dotted line)
- RIVER BASIN DISTRICT EL10** (Thick black line)
- OTHER RIVER BASIN DISTRICTS** (Thin black line)
- APFSR** (Dotted line)
- STREAMS** (Blue line)

Scale: 0 to 2,500 M. GGRS 87 QUADRATURE PER 2.500 M. (1) 224.691.0250m



Logo of the Ministry of Environment, Planning and Statistics of North Macedonia.

1

μ μ (EL10)

1° - 7

=50 - EL10APFSR008

FLUVIAL FLOOD RISK MAP FOR RETURN PERIOD =50 YEARS - APSFR EL10APFSR008

EL10-07-FRSK-050-025-38-4545-02	1:25.000
23-12-2023	2.0

NERCO

Logo of the European Union.

Logo of the Ministry of Environment, Planning and Statistics of North Macedonia.

Logo of the Operational Program "Regional Development" 2014-2020.