

EL10APSFR008

/LEGEND

LANDUSE - ECONOMIC ACTIVITIES - CULTURAL HERITAGE (within flood zone)

- / HOSPITAL** (Icon)
- CLINICS-HEALTH UNITS** (Icon)
- / EDUCATION** (Icon)
- FACILITIES** (Icon)
- / CULTURAL HERITAGE MONUMENTS** (Icon)
- CIVIL PROTECTION FACILITIES** (Icon)
- LIVESTOCK HOLDINGS** (Icon)
- / ENERGY STATIONS:**
 - / SMALL HYDROPOWER STATIONS (SHPP)** (Icon)
 - WATER SUPPLY BOREHOLES-WATER SOURCES** (Icon)
- WASTE WATER TREATMENT PLANT**
 - <10,000** (Icon)
 - 10,000-100,000** (Icon)
 - >100,000** (Icon)
- / INDUSTRIES**
 - IPPC** (Icon)
 - SEVESO** (Icon)
 - IED** (Icon)
 - OTHER UNITS** (Icon)
- INDICATIVE AFFECTED POPULATION**
 - < 500** (Icon)
 - 500 - 2000** (Icon)
 - > 2000** (Icon)
- HERITANCE SITES** (Icon)
- INDUSTRIAL SITES** (Icon)
- /LANDFILL** (Icon)
- AREAS / DEVELOPED TOURIST** (Icon)
- AREAS / DEVELOPING TOURIST** (Icon)
- / RICE CROP** (Icon)
- / GREEN HOUSES** (Icon)
- / OTHER** (Icon)
- PORT** (Icon)
- FLOOD ZONE T=1000 YEARS** (Icon)

PROTECTED AREAS OF 2000/60/EC DIRECTIVE

- SC: IMPORTANCE** (Icon)
- SPA: AREAS** (Icon)
- SPECIAL PROTECTION** (Icon)
- AS RECREATIONAL WATER** (Icon)
- AS RECREATIONAL WATER** (Icon)
- SCISPA: SITE OF COMMUNITY IMPORTANCE AND SPECIAL PROTECTION AREAS** (Icon)

BOUNDARIES OF NEIGHBORING STATES

- RIVER BASIN DISTRICT EL10** (Icon)
- OTHER RIVER BASIN DISTRICTS** (Icon)
- /APSFR** (Icon)
- /STREAMS** (Icon)

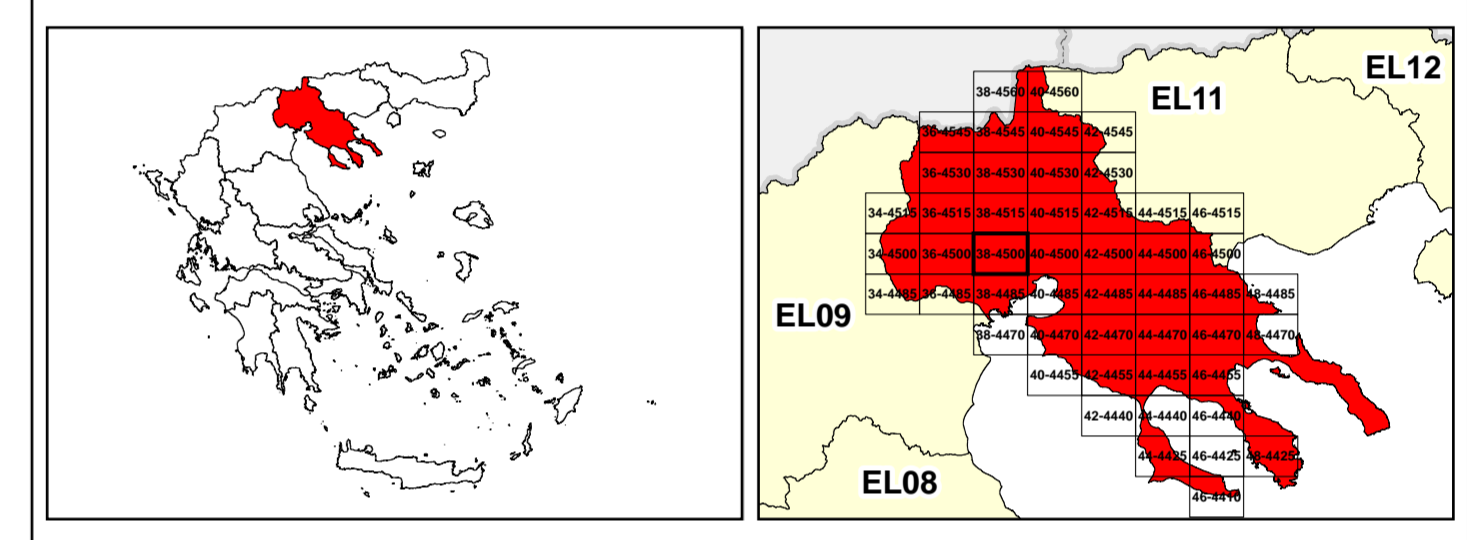
ROAD NETWORK

- MAJOR NATIONAL ROAD NETWORK** (Icon)
- /SECONDARY - TERTIARY NATIONAL ROAD NETWORK** (Icon)
- MAJOR PROVINCIAL ROAD NETWORK** (Icon)
- / SECONDARY-TERTIARY PROVINCIAL ROAD NETWORK** (Icon)
- /RAILWAY LINE** (Icon)

0 87 2.500
GGRS 87 QUADRATURE PER 2.500 M.

2022.

48°N (3) 171.4773718m () (1) 18.63010468m () 48°N



&

1

μ μ (EL10)

1° - 7

=50 - EL10APSFR008

FLUVIAL FLOOD RISK MAP FOR RETURN PERIOD =50 YEARS - APSFR EL10APSFR008

EL10-07-FRSK-050-025-38-4500-02	1:25.000
23-12-2023	2.0

/

&

NERCO