

**/LEGEND**

**LANDUSE - ECONOMIC ACTIVITIES - CULTURAL HERITAGE (within flood zone)**

- HOSPITAL** (Red circle with cross)
- CLINICS-HEALTH UNITS** (Red circle with cross)
- EDUCATION** (Blue circle with book)
- SPORT** (Red circle with ball)
- CULTURAL MONUMENTS** (Red circle with monument)
- CIVIL PROTECTION FACILITIES** (Red circle with fire)
- LIVESTOCK HOLDINGS** (Red circle with cow)
- ENERGY STATIONS - STATIONS (SHP)** (Yellow circle with lightning)
- WATER SUPPLY BOREHOLES - WATER SOURCES** (Yellow circle with water tap)
- WASTE WATER TREATMENT PLANT** (Blue circle with water drop)
- INDUSTRIES** (Red circle with factory)
- SEVESO** (Red circle with hazard)
- IED** (Red circle with bomb)
- OTHER UNITS** (Red circle with person)
- INDICATIVE AFFECTED POPULATION** (Pink figures):
  - < 500
  - 500 - 2000
  - > 2000
- HERITAGE SITES** (Yellow rectangle with cross-hatch)
- INDUSTRIAL SITES** (Yellow rectangle with diagonal lines)
- LANDFILL** (Yellow rectangle with diagonal lines)
- AREAS / DEVELOPED TOURIST** (Yellow rectangle with diagonal lines)
- AREAS / DEVELOPING TOURIST** (Yellow rectangle with diagonal lines)
- RICE CROP** (Yellow rectangle with diagonal lines)
- GREEN HOUSES** (Yellow rectangle with diagonal lines)
- CROPS** (Yellow rectangle with diagonal lines)
- PORT** (Blue rectangle with diagonal lines)
- FLOOD ZONE T=1000 YEARS** (Blue rectangle with diagonal lines)

**PROTECTED AREAS OF 2000/60/EC DIRECTIVE**

- SIC: IMPORTANCE** (Green dashed line)
- SPA: AREAS** (Red dashed line)
- SICSPA: SITE OF COMMUNITY IMPORTANCE AND SPECIAL PROTECTION AREAS** (Purple dashed line)
- SPECIAL PROTECTION AS RECREATIONAL WATER** (Blue dashed line)

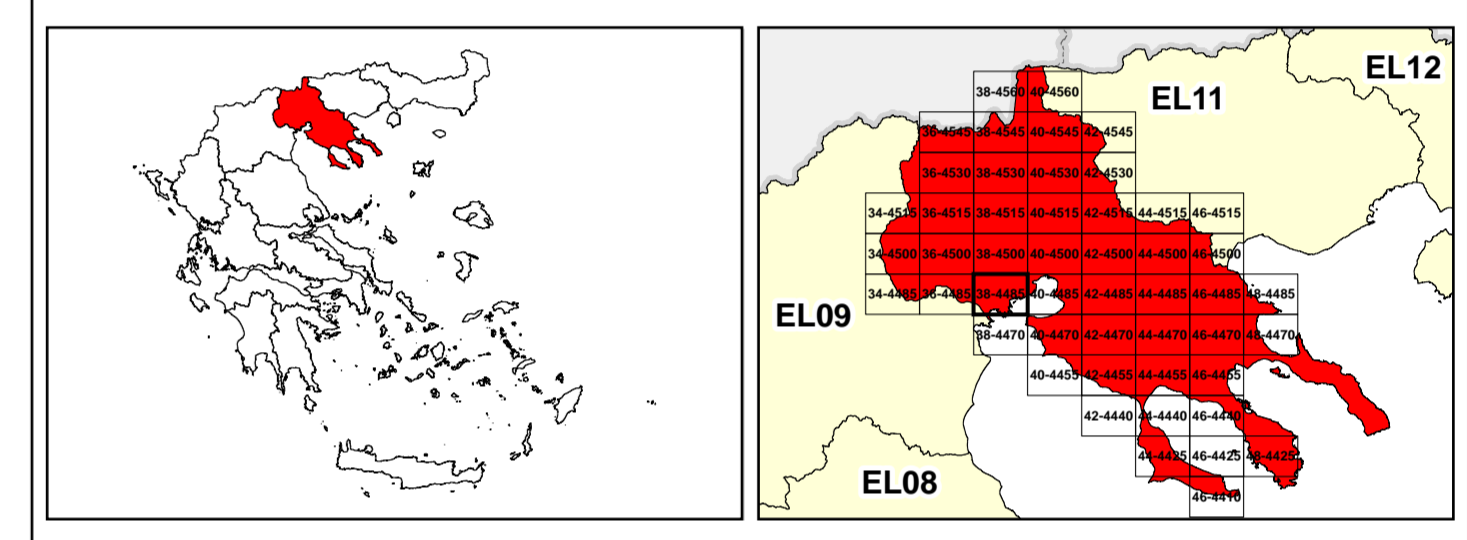
**ROAD NETWORK**



- MAJOR NATIONAL ROAD NETWORK** (Thick grey line)
- SECONDARY - TERTIARY NATIONAL ROAD NETWORK** (Thin grey line)
- MAJOR PROVINCIAL ROAD NETWORK** (Red line)
- SECONDARY-TERTIARY PROVINCIAL ROAD NETWORK** (Thin red line)
- RAILWAY LINE** (Black line with cross-ticks)

**BOUNDARIES OF NEIGHBORING STATES**

- RIVER BASIN DISTRICT EL10** (Thick black line)
- OTHER RIVER BASIN DISTRICTS** (Thin black line)
- APSFR** (Red dashed line)
- STREAMS** (Blue line)

Scale: 0 to 2.500 M. GGRS 87 QUADRATURE PER 2.500 M.




  
 &
   


1

μ μ (EL10)

1° - 7

=50 - EL10APSF008

**FLUVIAL FLOOD RISK MAP FOR RETURN PERIOD =50 YEARS - APSFR EL10APSF008**

EL10-07-FRSK-050-025-38-4485-02	1:25.000
23-12-2023	2.0

/ &

NERCO

