

/LEGEND

LANDUSE - ECONOMIC ACTIVITIES - CULTURAL HERITAGE (within flood zone)

- / HOSPITAL
- / CLINICS-HEALTH UNITS
- / EDUCATION
- / FACILITIES
- / HERITAGE MONUMENTS
- / CIVIL PROTECTION FACILITIES
- / LIVESTOCK HOLDINGS
- / ENERGY STATIONS
- / SMALL HYDROPOWER STATIONS (SHP)
- / WATER SUPPLY BOREHOLES-WATER SOURCES
- / WASTE WATER TREATMENT PLANT
- / INDUSTRIES
- / IPPC
- / SEVESO
- / IED
- / OTHER UNITS
- / CULTURAL HERITAGE SITES
- / INDUSTRIAL SITES
- / LANDFILL
- / AREAS / DEVELOPED TOURIST
- / AREAS / DEVELOPING TOURIST
- / RICE CROP
- / GREEN HOUSES
- / CROPS
- / PORT
- / AIRPORT
- / FLOOD ZONE T=1000 YEARS

INDICATIVE AFFECTED POPULATION

- < 500
- 500 - 2000
- > 2000

PROTECTED AREAS OF 2000/60/EC DIRECTIVE

- / SITE OF COMMUNITY IMPORTANCE
- / SPA: AREAS
- / SCISPA: SITE OF COMMUNITY IMPORTANCE AND SPECIAL PROTECTION AREAS
- / SPECIAL PROTECTION AREAS
- / WATER SYSTEMS IDENTIFIED AS RECREATIONAL WATER

BOUNDARIES OF NEIGHBORING STATES

- / RIVER BASIN DISTRICT EL10
- / OTHER RIVER BASIN DISTRICTS
- / APSFR
- / STREAMS

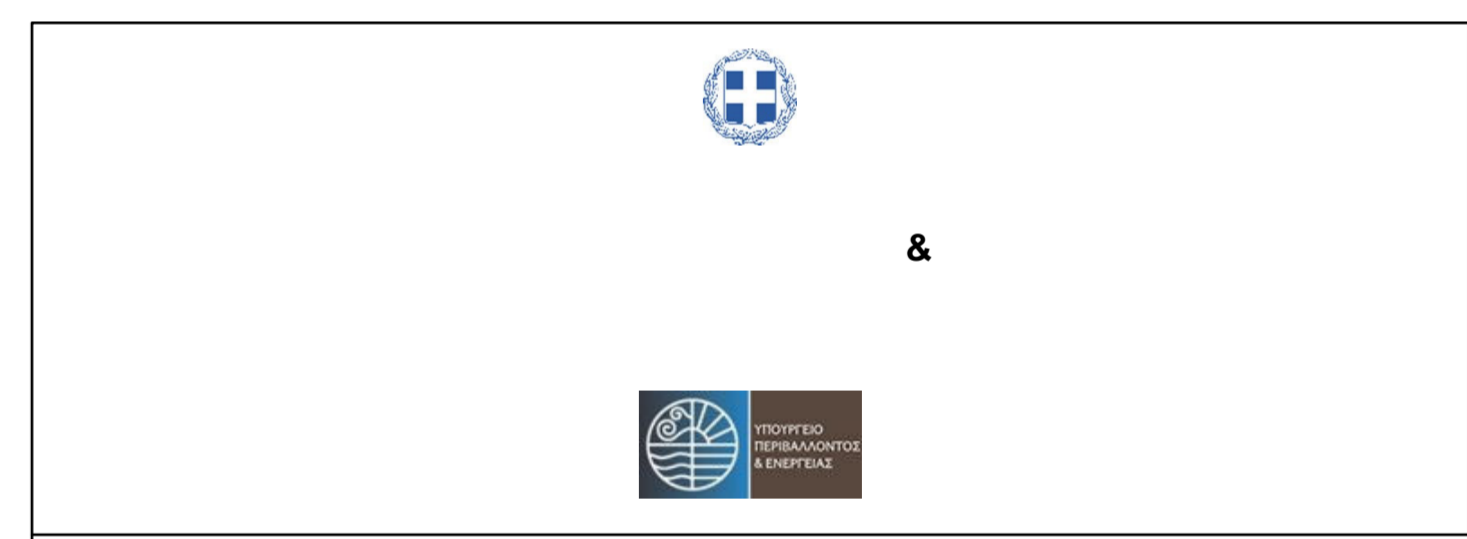
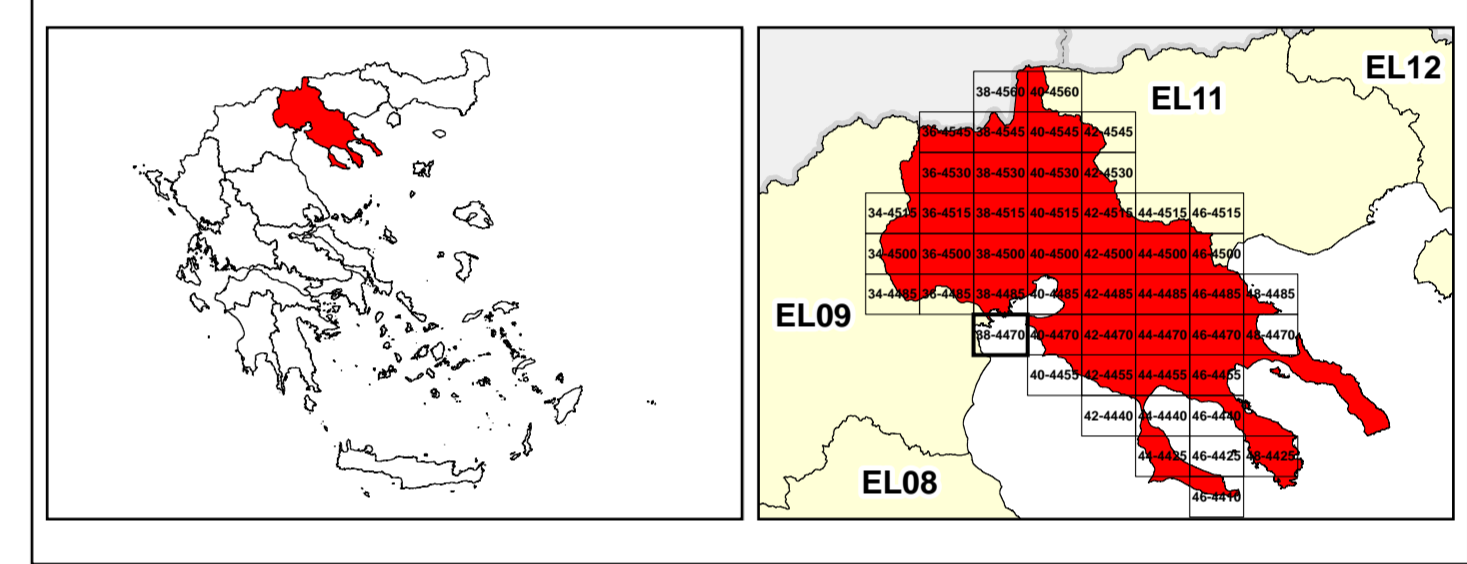
ROAD NETWORK

- / MAJOR NATIONAL ROAD NETWORK
- / SECONDARY - TERTIARY NATIONAL ROAD NETWORK
- / MAJOR PROVINCIAL ROAD NETWORK
- / SECONDARY-TERTIARY PROVINCIAL ROAD NETWORK
- / RAILWAY LINE

0 2.500 5000 7500 10000 M

GGRS 87 QUADRATURE PER 2.500 M.

2022. (1) 224.691.0250m (



1

μ μ (EL10)

1° - 7

=50 - EL10APSFR008

FLUVIAL FLOOD RISK MAP FOR RETURN PERIOD =50 YEARS - APSFR EL10APSFR008

EL10-07-FRSK-050-025-38-4470-02	1:25.000
23-12-2023	2.0

/ &

NERCO -

μ