



**/LEGEND**

**LANDUSE - ECONOMIC ACTIVITIES - CULTURAL HERITAGE (within flood zone)**

- HOSPITAL** (Red circle with cross)
- CLINICS-HEALTH UNITS** (Red circle with cross)
- EDUCATION** (Blue circle with book)
- FACILITIES** (Red circle with cross)
- HERITAGE MONUMENTS** (Red circle with cross)
- CIVIL PROTECTION FACILITIES** (Red circle with cross)
- LIVESTOCK HOLDINGS** (Yellow circle with cow)
- ENERGY STATIONS- STATIONS (SHP)** (Yellow triangle with lightning bolt)
- WATER SUPPLY BOREHOLES- WATER SOURCES** (Yellow circle with water drop)
- WASTE WATER TREATMENT PLANT** (Blue circle with water drop)
- INDUSTRIES** (Red circle with cross)
- IPPC** (Red circle with cross)
- SEVESO** (Red circle with cross)
- IED** (Red circle with cross)
- OTHER UNITS** (Red circle with cross)
- INDICATIVE AFFECTED POPULATION** (Pink figures):
  - < 500
  - 500 - 2000
  - > 2000
- HERITANCE SITES** (Yellow rectangle with cross)
- INDUSTRIAL SITES** (Yellow rectangle with cross)
- LANDFILL** (Green rectangle with cross)
- AREAS / DEVELOPED TOURIST** (Yellow rectangle with cross)
- AREAS / DEVELOPING TOURIST** (Yellow rectangle with cross)
- AREAS / RICE CROP** (Yellow rectangle with cross)
- AREAS / GREEN HOUSES** (Yellow rectangle with cross)
- CROPS / OTHER** (Green rectangle with cross)
- PORT** (Blue rectangle with cross)
- FLOOD ZONE T=1000 YEARS** (Blue rectangle with cross)

**PROTECTED AREAS OF 2000/60/EC DIRECTIVE**

- SIC: IMPORTANCE** (Green dashed line)
- SPA: AREAS** (Red dashed line)
- SITE OF COMMUNITY IMPORTANCE AND SPECIAL PROTECTION AREAS** (Blue dashed line)
- SPECIAL PROTECTION AS RECREATIONAL WATER** (Blue dashed line)
- WATER SYSTEMS IDENTIFIED** (Blue dashed line)

**BOUNDARIES OF NEIGHBORING STATES**

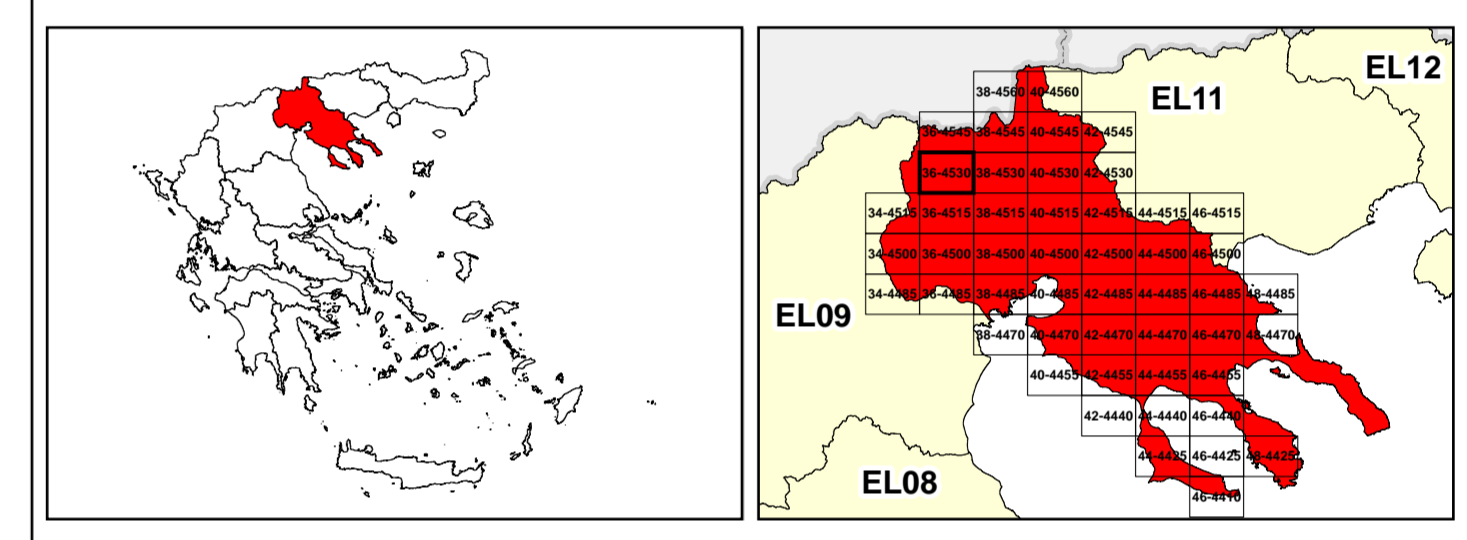
- RIVER BASIN DISTRICT EL10** (Red dashed line)
- OTHER RIVER BASIN DISTRICTS** (Yellow dashed line)
- APSF** (Red dashed line)
- STREAMS** (Blue line)

**ROAD NETWORK**

- MAJOR NATIONAL ROAD NETWORK** (Thick black line)
- SECONDARY - TERTIARY NATIONAL ROAD NETWORK** (Thin black line)
- MAJOR PROVINCIAL ROAD NETWORK** (Red line)
- SECONDARY-TERTIARY PROVINCIAL ROAD NETWORK** (Thin red line)
- RAILWAY LINE** (Black line with cross-ticks)

**Scale:** 0, 87, 2,500 M. GGRS 87 QUADRATURE PER 2,500 M.

**Coordinates:** 2022, 48m, (1) 224.691.0250m



Logo of the Ministry of Environment, Energy and Climate Change of Greece.

1

μ μ (EL10)  
1° - 7  
=50 - EL10APSF008

**FLUVIAL FLOOD RISK MAP FOR RETURN PERIOD =50 YEARS - APSFR EL10APSF008**

EL10-07-FRSK-050-025-36-4530-02	1:25.000
23-12-2023	2.0

NERCO

Logo of the European Union.

Logo of the Ministry of Environment, Energy and Climate Change of Greece (ΕΣΠΑ 2014-2020).