



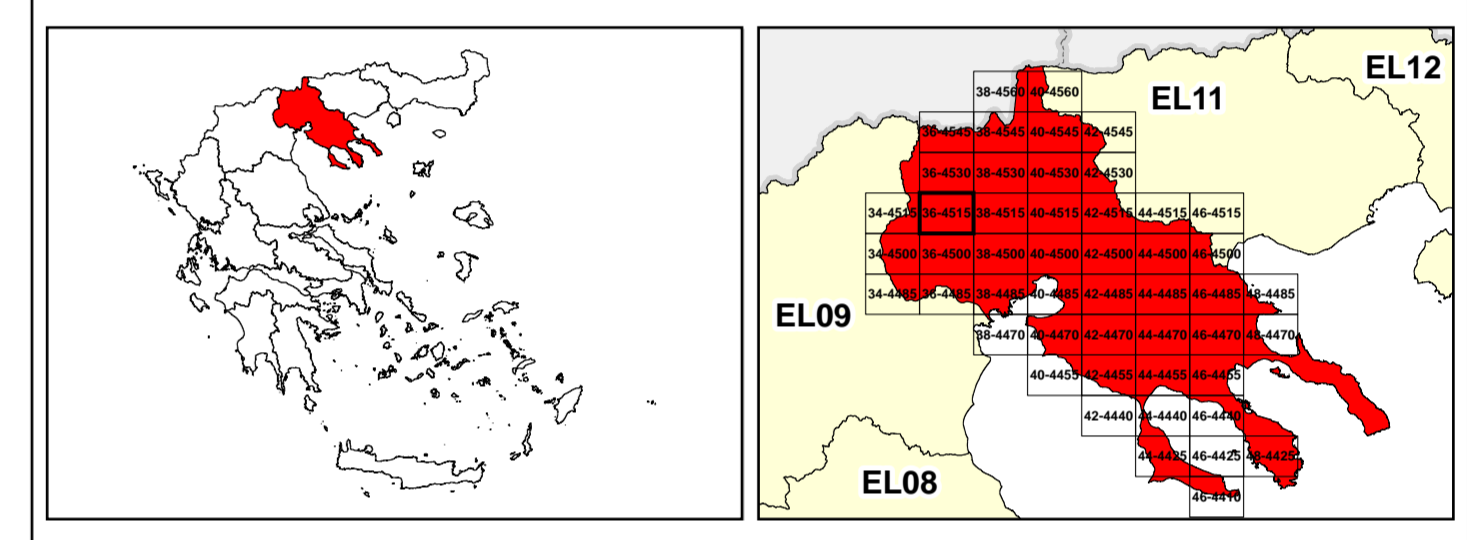
/LEGEND

LANDUSE - ECONOMIC ACTIVITIES - CULTURAL HERITAGE (within flood zone)

- HOSPITAL**
- CLINICS-HEALTH UNITS**
- EDUCATION**
- FACILITIES**
- HERITAGE MONUMENTS**
- CIVIL PROTECTION FACILITIES**
- LIVESTOCK HOLDINGS**
- ENERGY STATIONS**
- SMALL HYDROPOWER STATIONS (SHPP)**
- WATER SUPPLY BOREHOLES-WATER SOURCES**
- WASTE WATER TREATMENT PLANT**
 - <10,000
 - 10,000-100,000
 - >100,000
- INDUSTRIES**
 - IPPC
 - SEVESO
 - IED
 - OTHER UNITS
- INDICATIVE AFFECTED POPULATION**
 - < 500
 - 500 - 2000
 - > 2000
- PROTECTED AREAS OF 2000/60/EC DIRECTIVE**
 - SITE OF COMMUNITY IMPORTANCE
 - SITE OF COMMUNITY IMPORTANCE AND SPECIAL PROTECTION AREAS
 - SPECIAL PROTECTION AREAS
 - SPECIAL PROTECTION AS RECREATIONAL WATER
 - WATER SYSTEMS IDENTIFIED
- HERITANCE SITES**
- INDUSTRIAL SITES**
- LANDFILL**
- AREAS / DEVELOPED TOURIST**
- AREAS / DEVELOPING TOURIST**
- RICE CROP**
- GREEN HOUSES**
- CROPS**
- PORT**
- FLOOD ZONE T=1000 YEARS**
- BOUNDARIES OF NEIGHBORING STATES**
- RIVER BASIN DISTRICT EL10**
- OTHER RIVER BASIN DISTRICTS**
- APSF**
- STREAMS**
- ROAD NETWORK**
 - MAJOR NATIONAL ROAD NETWORK
 - SECONDARY - TERTIARY NATIONAL ROAD NETWORK
 - MAJOR PROVINCIAL ROAD NETWORK
 - SECONDARY-TERTIARY PROVINCIAL ROAD NETWORK
 - RAILWAY LINE

Scale: 0 to 2.500 M. GGRS 87 QUADRATURE PER 2.500 M.

2022. 48hr. (2) 171.477.571ton (1) 224.691.025ton



Logo of the Ministry of Environment, Energy and Climate Change of Greece.

1

μ μ (EL10)

1° - 7

=50 - EL10APSF008

FLUVIAL FLOOD RISK MAP FOR RETURN PERIOD =50 YEARS - APSFR EL10APSF008

EL10-07-FRSK-050-025-36-4515-02	1:25.000
23-12-2023	2.0

Logo of NERCO.

Logo of the European Union.

Logo of NSRF (ΕΣΠΑ) 2014-2020.