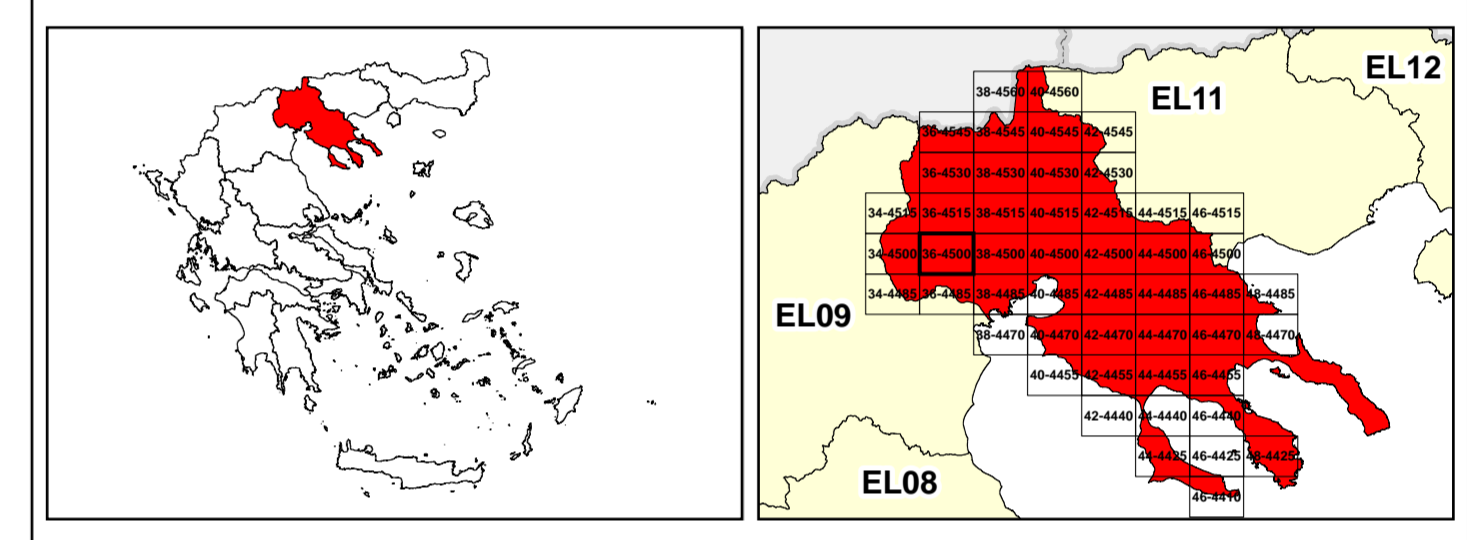


/LEGEND

LANDUSE - ECONOMIC ACTIVITIES - CULTURAL HERITAGE (within flood zone)

- HOSPITAL** (Icon)
- CLINICS-HEALTH UNITS** (Icon)
- EDUCATION** (Icon)
- FACILITIES** (Icon)
- HERITAGE MONUMENTS** (Icon)
- CIVIL PROTECTION FACILITIES** (Icon)
- LIVESTOCK HOLDINGS** (Icon)
- ENERGY STATIONS- STATIONS (SHP)** (Icon)
- WATER SUPPLY BOREHOLES- WATER SOURCES** (Icon)
- WASTE WATER TREATMENT PLANT** (Icon)
- INDUSTRIES** (Icon)
- IPPC** (Icon)
- SEVESO** (Icon)
- IED** (Icon)
- OTHER UNITS** (Icon)
- INDICATIVE AFFECTED POPULATION** (Icon)
- PROTECTED AREAS OF 2000/60/EC DIRECTIVE** (Icon)
- SC: IMPORTANCE** (Icon)
- SPA: AREAS** (Icon)
- BOUNDARIES OF NEIGHBORING STATES** (Icon)
- RIVER BASIN DISTRICT EL10** (Icon)
- OTHER RIVER BASIN DISTRICTS** (Icon)
- APSF** (Icon)
- STREAMS** (Icon)
- ROAD NETWORK** (Icon)
- MAJOR NATIONAL ROAD NETWORK** (Icon)
- SECONDARY - TERTIARY NATIONAL ROAD NETWORK** (Icon)
- MAJOR PROVINCIAL ROAD NETWORK** (Icon)
- SECONDARY-TERTIARY PROVINCIAL ROAD NETWORK** (Icon)
- RAILWAY LINE** (Icon)
- HERITAGE SITES** (Icon)
- INDUSTRIAL SITES** (Icon)
- LANDFILL** (Icon)
- AREAS / DEVELOPED TOURIST** (Icon)
- AREAS / DEVELOPED TOURIST** (Icon)
- RICE CROP** (Icon)
- GREEN HOUSES** (Icon)
- CROPS** (Icon)
- PORT** (Icon)
- FLOOD ZONE T=1000 YEARS** (Icon)
- AIRPORT** (Icon)
- OTHER** (Icon)
- SITE OF COMMUNITY IMPORTANCE AND SPECIAL PROTECTION AREAS** (Icon)
- SPECIAL PROTECTION AS RECREATIONAL WATER** (Icon)
- WATER SYSTEMS IDENTIFIED** (Icon)

Scale: 0 to 2.500 M. GGRS 87 QUADRATURE PER 2.500 M.



Logo of the Ministry of Environment, Energy and Climate Change of Greece.

1

μ μ (EL10)

1° - 7

=50 - EL10APSF008

FLUVIAL FLOOD RISK MAP FOR RETURN PERIOD =50 YEARS - APSFR EL10APSF008

EL10-07-FRSK-050-025-36-4500-02	1:25.000
23-12-2023	2.0

NERCO

Logo of the European Union.

Logo of the Ministry of Environment, Energy and Climate Change of Greece (ΕΣΠΑ 2014-2020).