

/LEGEND

LANDUSE - ECONOMIC ACTIVITIES - CULTURAL HERITAGE (within flood zone)

/ HOSPITAL	WASTE WATER TREATMENT PLANT	/ CULTURAL HERITANCE SITES
CLINICS-HEALTH UNITS	<10,000	INDUSTRIAL SITES
/ EDUCATION	10,000-100,000	LANDFILL
/ FACILITIES	>100,000	/ DEVELOPED TOURIST AREAS
/ CULTURAL HERITANCE MONUMENTS	IPPC	/ DEVELOPING TOURIST AREAS
CIVIL PROTECTION FACILITIES	SEVESO	/ RICE CROP
LIVESTOCK HOLDINGS	IED	/ GREEN HOUSES
/ ENERGY STATIONS	OTHER UNITS	CROPS
/ SMALL HYDROPOWER STATIONS (SHPP)	< 500	PORT
WATER SUPPLY BOREHOLES-WATER SOURCES	500 - 2000	FLOOD ZONE T=1000 YEARS
	> 2000	
SC: IMPORTANCE	PROTECTED AREAS OF 2000/60/EC DIRECTIVE	/ SITE OF COMMUNITY IMPORTANCE AND SPECIAL PROTECTION AREAS
SPA: AREAS	/ SPECIAL PROTECTION AREAS	/ WATER SYSTEMS IDENTIFIED AS RECREATIONAL WATER

BOUNDARIES OF NEIGHBORING STATES

RIVER BASIN DISTRICT EL10

OTHER RIVER BASIN DISTRICTS

APSF

STREAMS

ROAD NETWORK

MAJOR NATIONAL ROAD NETWORK

SECONDARY - TERTIARY NATIONAL ROAD NETWORK

MAJOR PROVINCIAL ROAD NETWORK

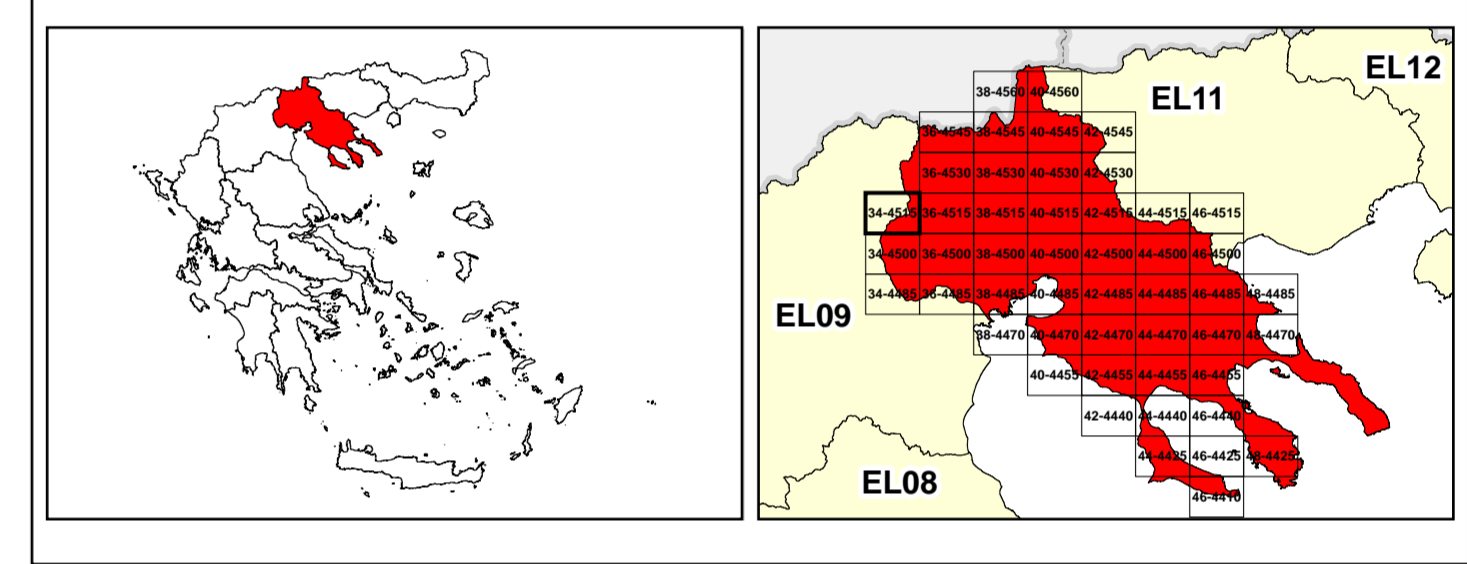
SECONDARY-TERTIARY PROVINCIAL ROAD NETWORK

RAILWAY LINE

0 1 2 3 4 5 km

GGRS 87 QUADRATURE PER 2.500 M.

2022. (1) 171.472.571ton (



&

1

μ μ (EL10)

1° - 7

=50 - EL10APSF008

FLUVIAL FLOOD RISK MAP FOR RETURN PERIOD =50 YEARS - APSFR EL10APSF008

EL10-07-FRSK-050-025-34-4515-02	1:25.000
23-12-2023	2.0

NERCO