

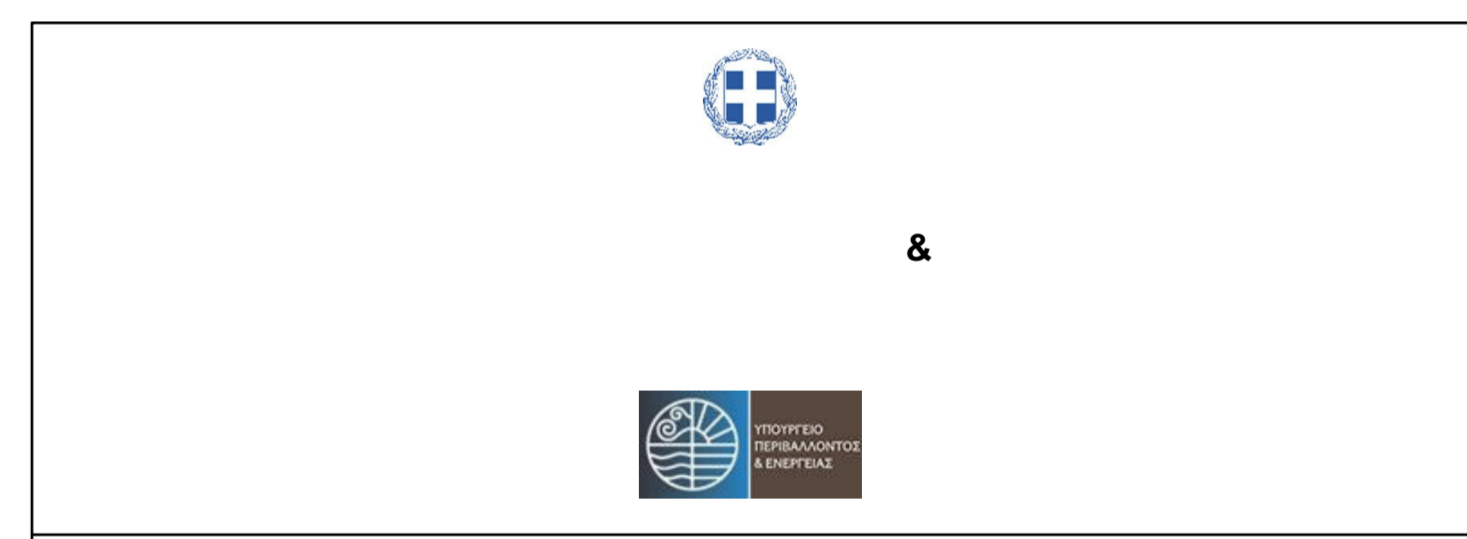
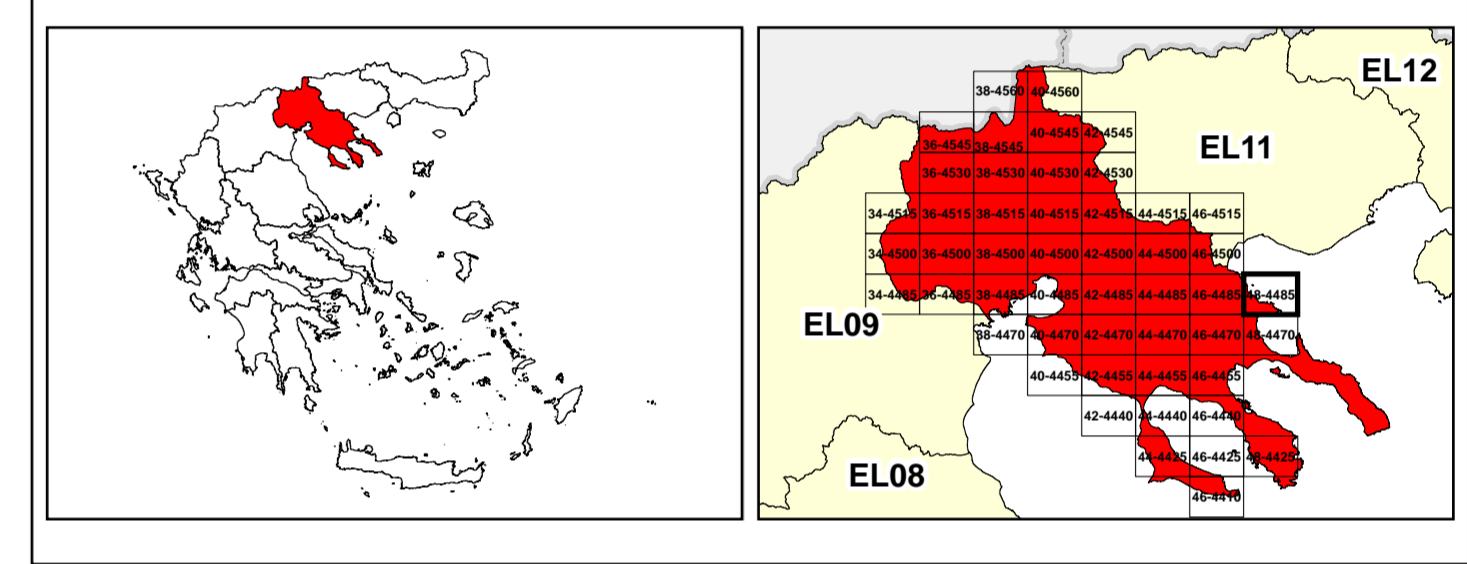


/LEGEND

LANDUSE - ECONOMIC ACTIVITIES - CULTURAL HERITAGE (within flood zone)

- / HOSPITAL**
- CLINICS-HEALTH UNITS**
- / EDUCATION**
- FACILITIES**
- / CULTURAL HERITAGE MONUMENTS**
- CIVIL PROTECTION FACILITIES**
- LIVESTOCK HOLDINGS**
- / ENERGY STATIONS- STATIONS (SHP)**
- WATER SUPPLY BOREHOLES- WATER SOURCES**
- WASTE WATER TREATMENT PLANT**
 - <10,000
 - 10,000-100,000
 - >100,000
- / INDUSTRIES**
 - IPPC
 - SEVESO
 - IED
 - OTHER UNITS
- INDICATIVE AFFECTED POPULATION**
 - < 500
 - 500 - 2000
 - > 2000
- PROTECTED AREAS OF 2000/60/EC DIRECTIVE**
 - SC: IMPORTANCE
 - SPA: AREAS
 - SCISPA: SITE OF COMMUNITY IMPORTANCE AND SPECIAL PROTECTION AREAS
 - AS RECREATIONAL WATER
- HERITANCE SITES**
- INDUSTRIAL SITES**
- / LANDFILL**
- AREAS**
 - / DEVELOPED TOURIST AREAS
 - / DEVELOPING TOURIST AREAS
 - / RICE CROP
 - / GREEN HOUSES
 - / CROPS
 - / AIRPORT- =1000
 - / FLOOD ZONE T=1000 YEARS
- BOUNDARIES OF NEIGHBORING STATES**
- RIVER BASIN DISTRICT EL10**
- OTHER RIVER BASIN DISTRICTS**
- / APSFR**
- / STREAMS**
- ROAD NETWORK**
 - MAJOR NATIONAL ROAD NETWORK
 - SECONDARY - TERTIARY NATIONAL ROAD NETWORK
 - MAJOR PROVINCIAL ROAD NETWORK
 - SECONDARY-TERTIARY PROVINCIAL ROAD NETWORK
 - RAILWAY LINE

Scale: 0 1 2 3 Km
GGRS 87 QUADRATURE PER 2.500 M.



1

μ μ (EL10)
1° - 7

=1000 - EL10APSFR009

FLUVIAL FLOOD RISK MAP FOR RETURN PERIOD =1000 YEARS - APSFR EL10APSFR009

EL10-07-FRSK-01K-025-48-4485-02	1:25.000
23-12-2023	2.0

NERCO