



/LEGEND

LANDUSE - ECONOMIC ACTIVITIES - CULTURAL HERITAGE (within flood zone)

- / HOSPITAL** (Red circle with cross)
- CLINICS-HEALTH UNITS** (Red circle with cross)
- / EDUCATION** (Blue circle with book)
- FACILITIES** (Red circle with cross)
- / CULTURAL HERITAGE MONUMENTS** (Red circle with cross)
- CIVIL PROTECTION FACILITIES** (Red circle with cross)
- LIVESTOCK HOLDINGS** (Yellow circle with cow)
- / ENERGY STATIONS- STATIONS (SHP)** (Yellow circle with lightning bolt)
- WATER SUPPLY BOREHOLES- WATER SOURCES** (Yellow circle with water drop)
- WASTE WATER TREATMENT PLANT** (Blue circle with water drop)
- / INDUSTRIES** (Red circle with gear)
- IPPC** (Red circle with gear)
- SEVESO** (Red circle with gear)
- IED** (Red circle with gear)
- OTHER UNITS** (Red circle with gear)
- INDICATIVE AFFECTED POPULATION**
 - < 500 (Pink circle)
 - 500 - 2000 (Pink circle)
 - > 2000 (Pink circle)
- HERITAGE SITES** (Green square)
- INDUSTRIAL SITES** (Purple square)
- / LANDFILL** (Green square)
- AREAS / DEVELOPED TOURIST** (Orange square)
- AREAS / DEVELOPING TOURIST** (Orange square)
- / RICE CROP** (Yellow square)
- / GREEN HOUSES** (Yellow square)
- CROPS / OTHER** (Green square)
- PORT** (Blue square)
- FLOOD ZONE T=1000 YEARS** (Blue square)

PROTECTED AREAS OF 2000/60/EC DIRECTIVE

- / SITE OF COMMUNITY IMPORTANCE AND SPECIAL PROTECTION AREAS** (Green dashed line)
- / SPECIAL PROTECTION AREAS RECREATIONAL WATER** (Blue dashed line)

BOUNDARIES OF NEIGHBORING STATES

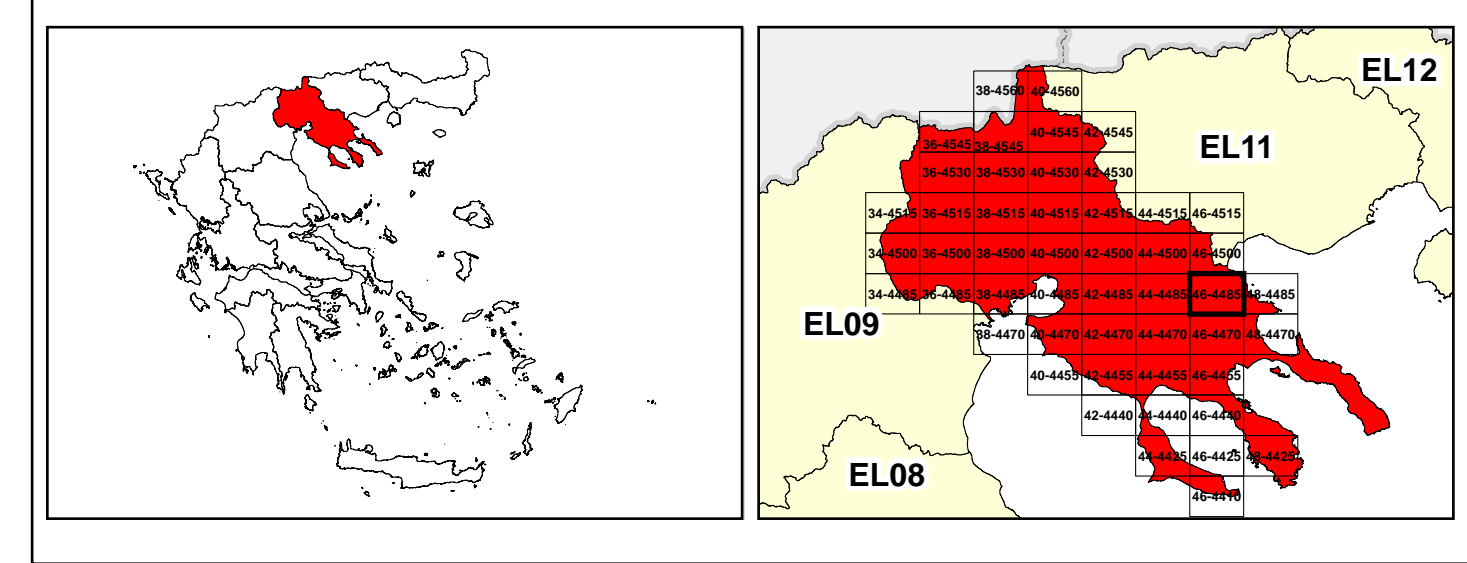
- RIVER BASIN DISTRICT EL10** (Black dashed line)
- OTHER RIVER BASIN DISTRICTS** (Red dashed line)
- / APSFR** (Red dashed line)
- / STREAMS** (Blue line)


/ ROAD NETWORK

- MAJOR NATIONAL ROAD NETWORK** (Thick black line)
- / SECONDARY - TERTIARY NATIONAL ROAD NETWORK** (Thin black line)
- MAJOR PROVINCIAL ROAD NETWORK** (Red line)
- / SECONDARY-TERTIARY PROVINCIAL ROAD NETWORK** (Thin red line)
- / RAILWAY LINE** (Black line with cross-ticks)


Scale: 0 1000 2000 3000 M

GGRS 87 QUADRATURE PER 2.500 M.





 &



1

μ μ (EL10)

1° - 7

=1000 - EL10APSF006 & EL10APSF009

FLUVIAL FLOOD RISK MAP FOR RETURN PERIOD =1000 YEARS - APSFR EL10APSF006 & EL10APSF009

EL10-07-FRSK-01K-025-46-4485-02	1:25.000
23-12-2023	2.0

NERCO

