



**/LEGEND**

**LANDUSE - ECONOMIC ACTIVITIES - CULTURAL HERITAGE (within flood zone)**

- / HOSPITAL
- CLINICS-HEALTH UNITS
- / EDUCATION
- FACILITIES
- / CULTURAL HERITAGE MONUMENTS
- CIVIL PROTECTION FACILITIES
- LIVESTOCK HOLDINGS
- / ENERGY STATIONS- STATIONS (SHPP)
- WATER SUPPLY BOREHOLES- WATER SOURCES
- WASTE WATER TREATMENT PLANT
- <10,000
- 10,000-100,000
- >100,000
- IPPC
- SEVESO
- IED
- OTHER UNITS
- INDUSTRIES
- AREAS / DEVELOPED TOURIST
- AREAS / DEVELOPING TOURIST
- AREAS / RICE CROP
- AREAS / GREEN HOUSES
- CROPS
- PORT
- FLOOD ZONE T=1000 YEARS
- HERITAGE SITES
- INDUSTRIAL SITES
- LANDFILL
- INDICATIVE AFFECTED POPULATION
- < 500
- 500 - 2000
- > 2000
- PROTECTED AREAS OF 2000/60/EC DIRECTIVE
- SITE OF COMMUNITY IMPORTANCE
- SITE OF COMMUNITY IMPORTANCE AND SPECIAL PROTECTION AREAS
- SPECIAL PROTECTION AREAS
- WATER SYSTEMS IDENTIFIED AS RECREATIONAL WATER

**BOUNDARIES OF NEIGHBORING STATES**

- RIVER BASIN DISTRICT EL10
- OTHER RIVER BASIN DISTRICTS
- APFSR
- STREAMS

**ROAD NETWORK**

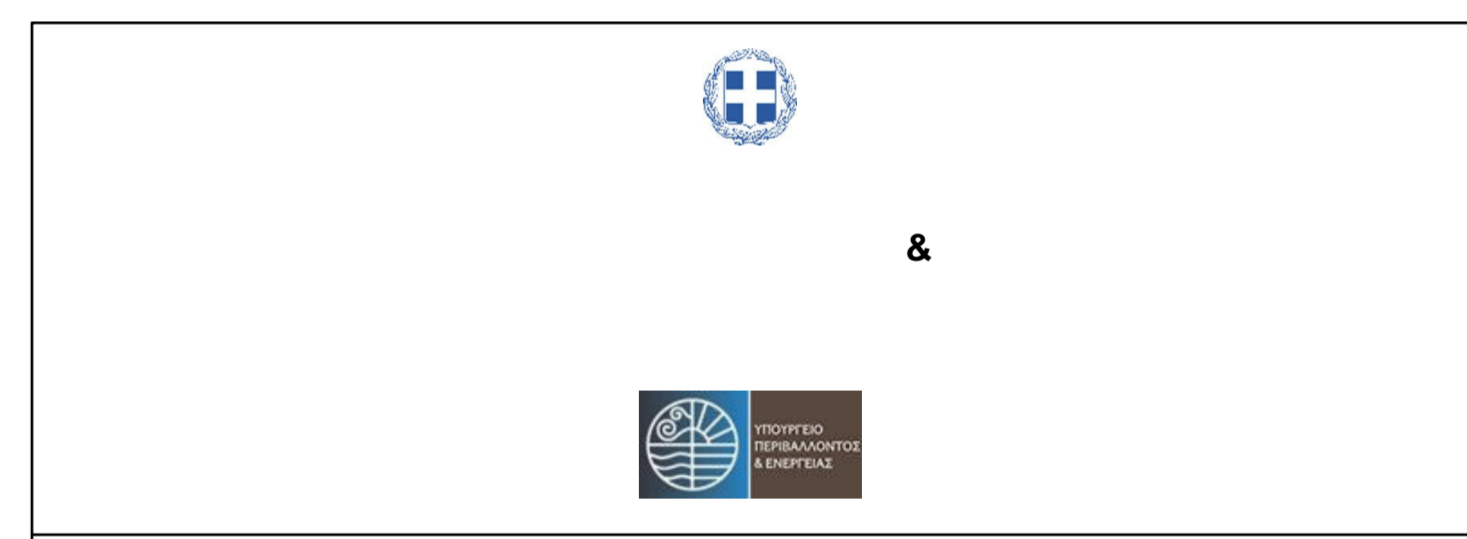
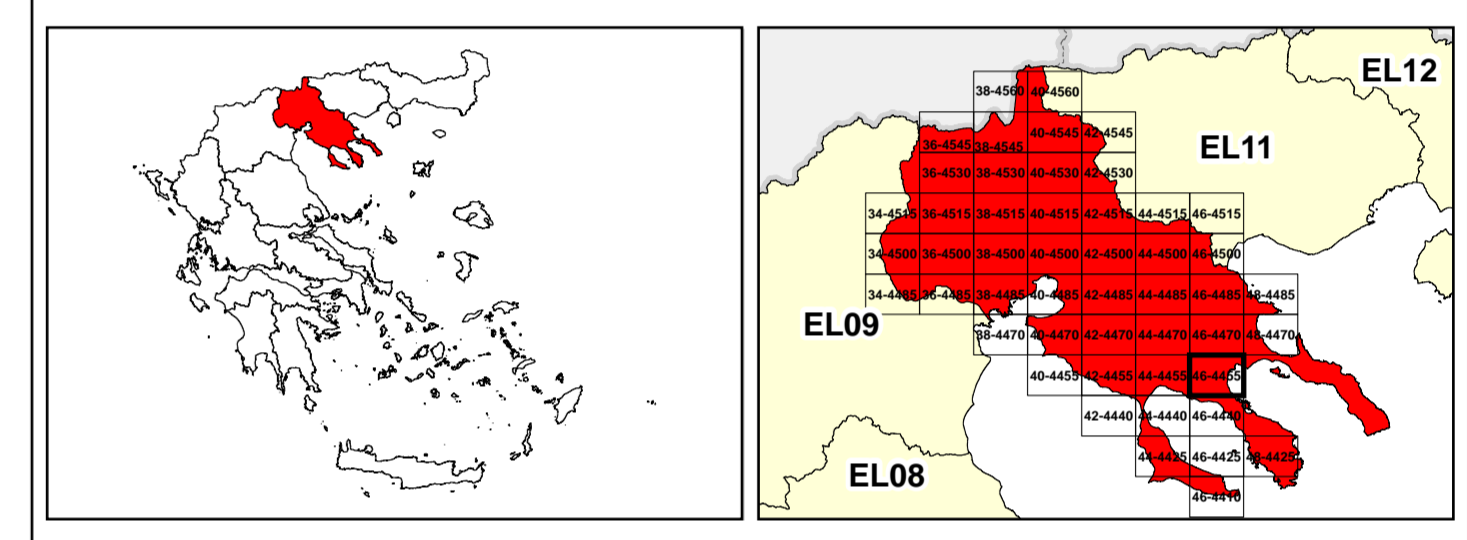
- MAJOR NATIONAL ROAD NETWORK
- SECONDARY - TERTIARY NATIONAL ROAD NETWORK
- MAJOR PROVINCIAL ROAD NETWORK
- SECONDARY-TERTIARY PROVINCIAL ROAD NETWORK
- RAILWAY LINE

0 1000 2000 3000 4000 5000 6000 7000 8000 9000 10000

GGRS 87 QUADRATURE PER 2.500 M.

2022

12hr, (2) 159.969.522ton ( ) 3.739.834ton ( )



1

μ μ (EL10)

1° - 7

=1000 - EL10APSFR002 & EL10APSFR009

**FLUVIAL FLOOD RISK MAP FOR RETURN PERIOD =1000 YEARS - APSFR EL10APSFR002 & EL10APSFR009**

EL10-07-FRSK-01K-025-46-4455-02	1:25.000
23-12-2023	2.0

/ &

NERCO -