

/LEGEND

LANDUSE - ECONOMIC ACTIVITIES - CULTURAL HERITAGE (within flood zone)

- / HOSPITAL**
- CLINICS-HEALTH UNITS**
- / EDUCATION**
- FACILITIES**
- / CULTURAL HERITAGE MONUMENTS**
- CIVIL PROTECTION FACILITIES**
- LIVESTOCK HOLDINGS**
- / ENERGY STATIONS- STATIONS (SHPP)**
- WATER SUPPLY BOREHOLES- WATER SOURCES**
- WASTE WATER TREATMENT PLANT**
 - <10,000
 - 10,000-100,000
 - >100,000
- / INDUSTRIES**
 - IPPC
 - SEVESO
 - IED
 - OTHER UNITS
- INDICATIVE AFFECTED POPULATION**
 - < 500
 - 500 - 2000
 - > 2000
- PROTECTED AREAS OF 2000/60/EC DIRECTIVE**
 - SC: IMPORTANCE
 - SPA: AREAS
 - SITE OF COMMUNITY IMPORTANCE AND SPECIAL PROTECTION AREAS
 - SPECIAL PROTECTION AREAS
 - WATER SYSTEMS IDENTIFIED AS RECREATIONAL WATER
- HERITANCE SITES**
- INDUSTRIAL SITES**
- / LANDFILL**
- AREAS / DEVELOPED TOURIST**
- AREAS / DEVELOPING TOURIST**
- / RICE CROP**
- / GREEN HOUSES**
- CROPS / OTHER**
- PORT**
- FLOOD ZONE T=1000 YEARS**

BOUNDARIES OF NEIGHBORING STATES

- RIVER BASIN DISTRICT EL10
- OTHER RIVER BASIN DISTRICTS
- APSF
- STREAMS

ROAD NETWORK

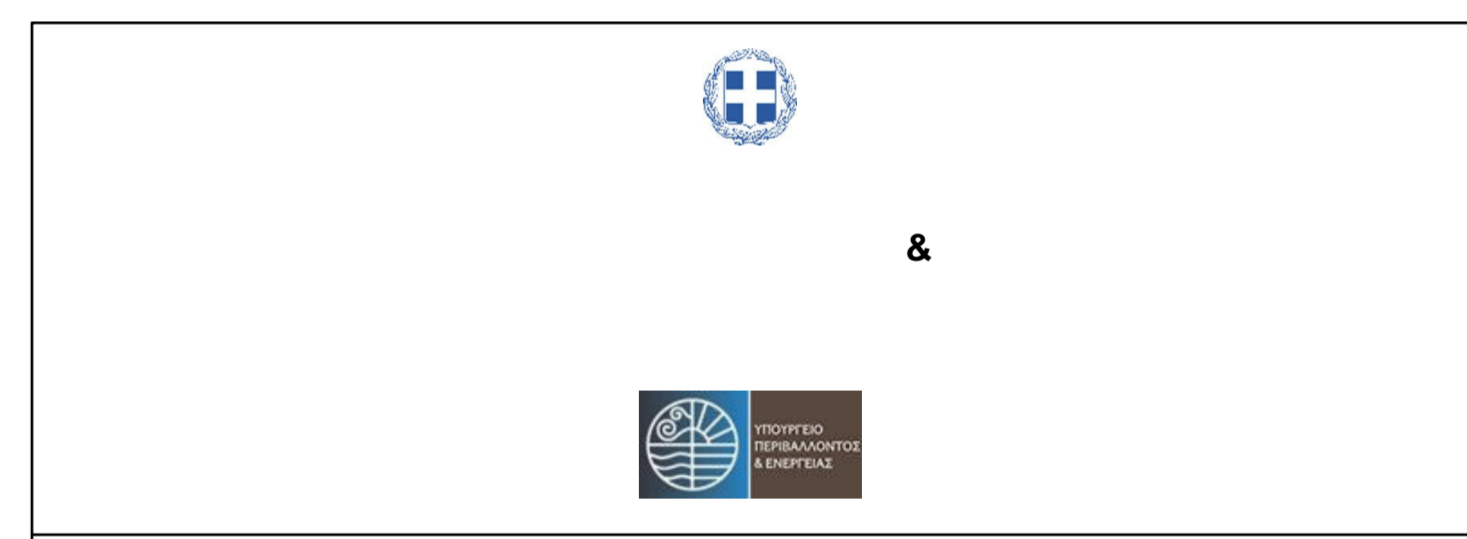
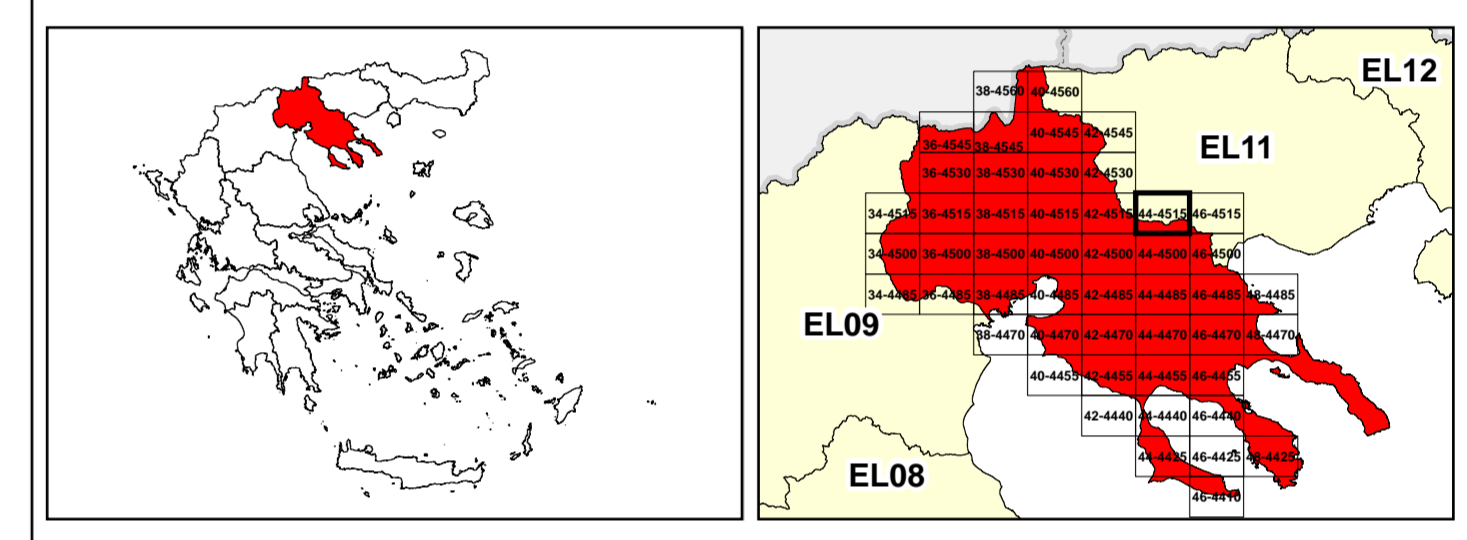
- MAJOR NATIONAL ROAD NETWORK
- SECONDARY - TERTIARY NATIONAL ROAD NETWORK
- MAJOR PROVINCIAL ROAD NETWORK
- SECONDARY-TERTIARY PROVINCIAL ROAD NETWORK
- RAILWAY LINE

0 1km 2,500

GGRS 87 QUADRATURE PER 2.500 M.

2022

(1) 597.026.844ton



1

μ μ (EL10)

1° - 7

=1000 - EL10APSFR006

FLUVIAL FLOOD RISK MAP FOR RETURN PERIOD =1000 YEARS - APSFR EL10APSFR006

EL10-07-FRSK-01K-025-44-4515-02	1:25.000
23-12-2023	2.0

/ &

NERCO -

μ μ