

LEGEND

LANDUSE - ECONOMIC ACTIVITIES - CULTURAL HERITAGE (within flood zone)

- HOSPITAL
- CLINICS-HEALTH UNITS
- EDUCATION
- SPORT
- INDUSTRIES
- CULTURAL HERITAGE MONUMENTS
- CIVIL PROTECTION FACILITIES
- LIVESTOCK HOLDINGS
- ENERGY STATIONS
- SMALL HYDROPOWER STATIONS (SHPP)
- WATER SUPPLY BOREHOLES-WATER SOURCES
- WASTE WATER TREATMENT PLANT
- INDUSTRIAL SITES
- LANDFILL
- DEVELOPED TOURIST AREAS
- DEVELOPING TOURIST AREAS
- RICE CROP
- GREEN HOUSES
- CROPS
- PORT
- AIRPORT
- FLOOD ZONE T=1000 YEARS

INDICATIVE AFFECTED POPULATION

- < 500
- 500 - 2000
- > 2000

PROTECTED AREAS OF 2000/60/EC DIRECTIVE

- SC: IMPORTANCE
- SPA: AREAS
- SITE OF COMMUNITY IMPORTANCE AND SPECIAL PROTECTION AREAS
- SPECIAL PROTECTION AS RECREATIONAL WATER

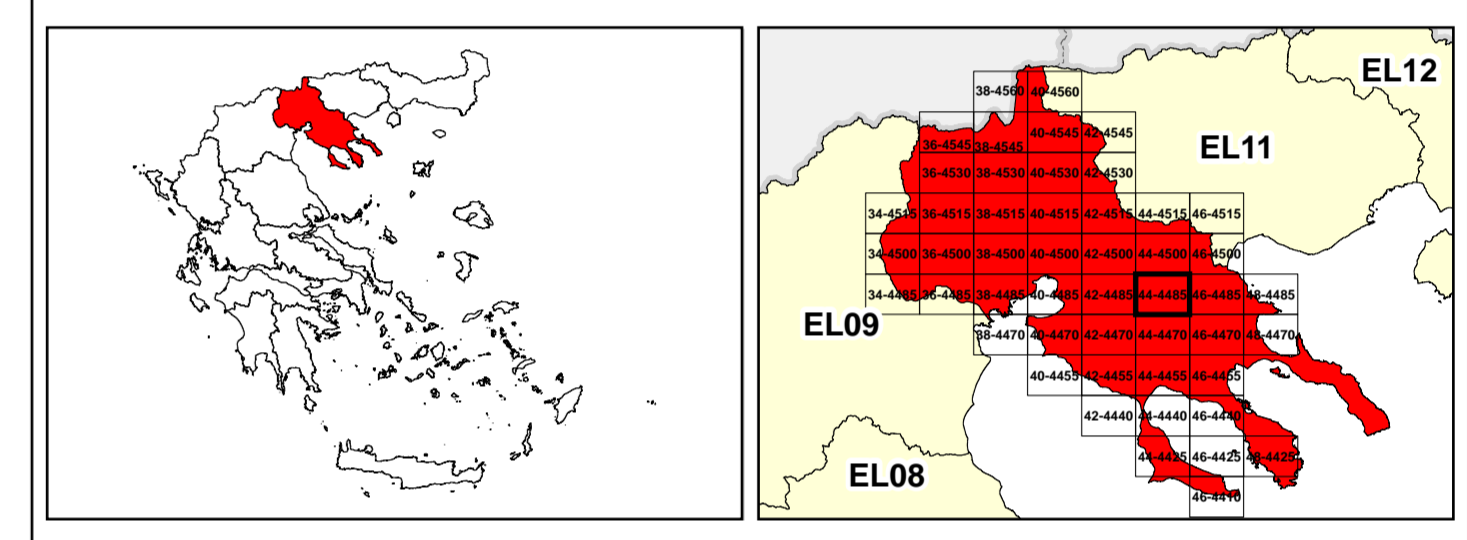
ROAD NETWORK

- MAJOR NATIONAL ROAD NETWORK
- SECONDARY - TERTIARY NATIONAL ROAD NETWORK
- MAJOR PROVINCIAL ROAD NETWORK
- SECONDARY-TERTIARY PROVINCIAL ROAD NETWORK
- RAILWAY LINE

BOUNDARIES OF NEIGHBORING STATES

- RIVER BASIN DISTRICT EL10
- OTHER RIVER BASIN DISTRICTS
- APSF
- STREAMS

Scale: 0 to 2.500 M. GGRS 87 QUADRATURE PER 2.500 M.



Logo of the Ministry of Environment, Energy and Climate Change of Greece.

1

μ μ (EL10)

1° - 7

=1000 - EL10APSF006

FLUVIAL FLOOD RISK MAP FOR RETURN PERIOD =1000 YEARS - APSFR EL10APSF006

EL10-07-FRSK-01K-025-44-4485-02	1:25.000
23-12-2023	2.0

NERCO

Logo of the European Union.

Logo of the Ministry of Environment, Energy and Climate Change of Greece (ΕΣΠΑ 2014-2020).